

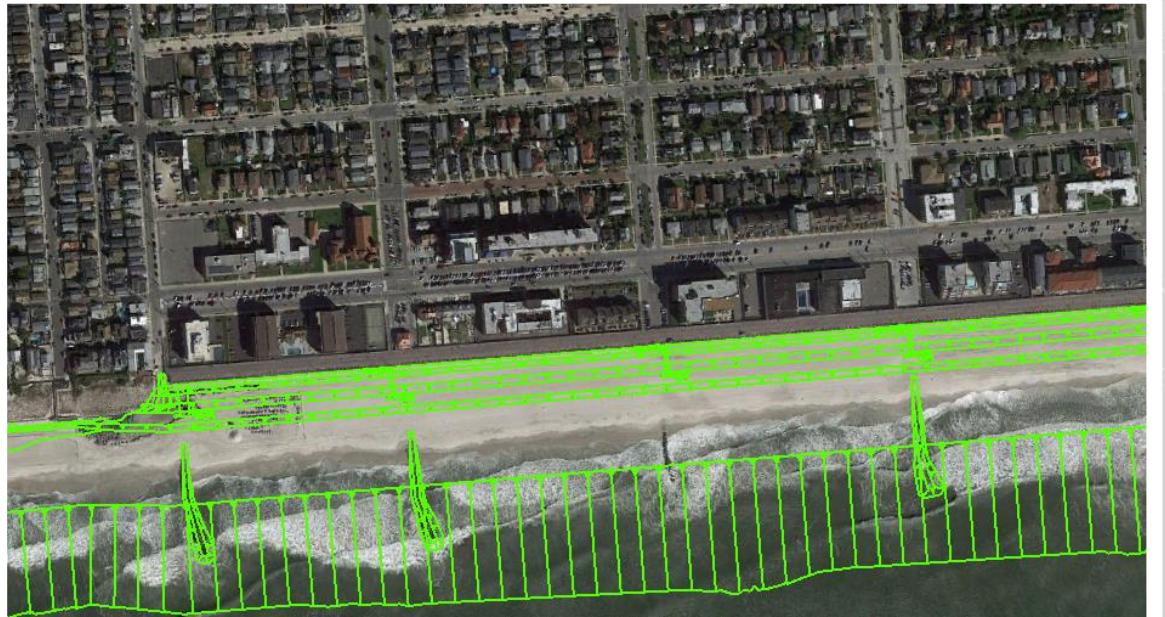
# ATLANTIC COAST OF LONG ISLAND, JONES INLET TO EAST ROCKAWAY INLET, LONG BEACH ISLAND, NY

## Contract #2 Construction Update

JUNE 27<sup>th</sup>-28<sup>th</sup> 2018



US Army Corps  
of Engineers®  
New York District





## INTRODUCTION



US Army Corps  
of Engineers ®

- The USACE is committed to constructing this project as fast as possible while maximizing safety and quality
- We will be working closely with our State and local partners
- We are committed to minimize-as much as possible-the disruption and inconvenience that these kinds of projects can cause to the public
- We now have the proposed order of work and initial schedule from Great Lakes Dredge and Dock Company to present to the public
- Like all construction schedules, there will be many changes along the way as we adapt to challenges and unexpected conditions or developments
- We will seek to maximize our communication and responsiveness





## CONTRACT 2 ACTIVITIES



US Army Corps  
of Engineers ®

- 4 million cubic yards of sand for beach and dune, hydraulically pumped onto the beach
  - Approximately 2.4M cubic yards within City of Long Beach
- Vehicle and pedestrian dune cross-overs
  - Pile Driving
  - Decking
  - Demolition of old structures
- Dune plantings and sand fencing
- In Point Lookout, dune positioning requires the demolition, relocation, and reconstruction of the Sun Shelter
- Contract 2 is approximately \$50 Million, funded 100% by the Federal Government under Public Law 113-2

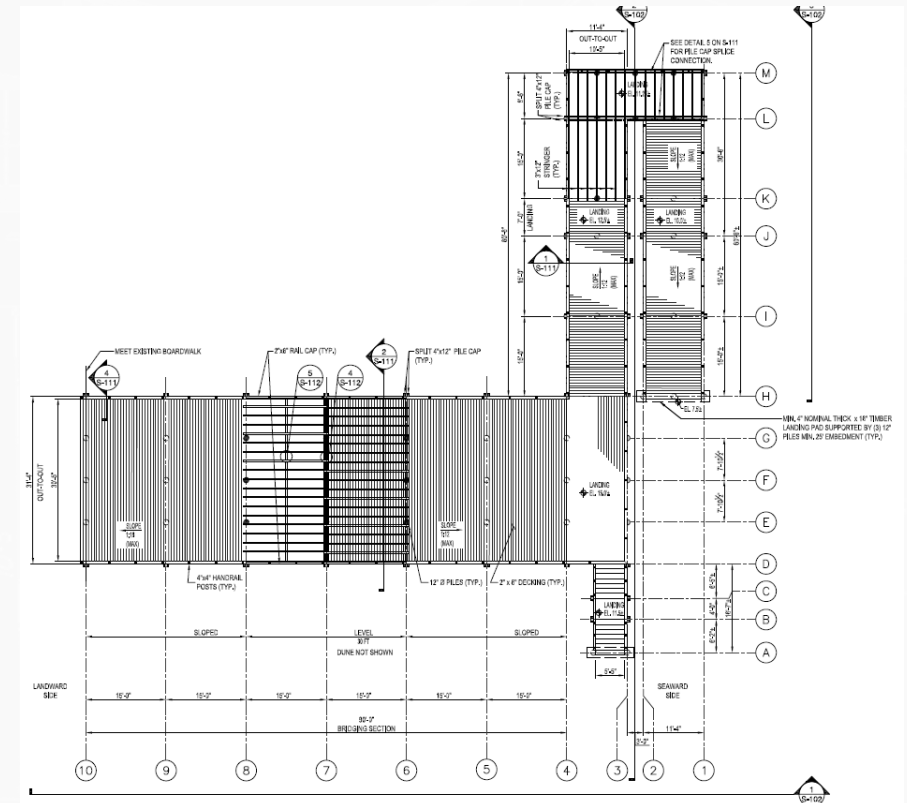


- Pile driving work is now underway
- Each location will require about a week of pile driving
- Old access ramps will not be demolished until new ones are finished
- Vibration will be monitored
- One pile driving location at a time, limited and temporary closure surrounding the new walkover piles
- Beach in front of construction will be open

## Order of Pile Driving

## Starting this week

1. Riverside
2. Edwards
3. National
4. Magnolia
5. Laurelton
6. Lafayette
7. Washington
8. Lindell
9. Grand
10. New York
11. Surfside
12. Sunrise
13. Neptune
14. Franklin
15. Lincoln
16. Monroe
17. Long Beach







## CROSS-OVERS



US Army Corps  
of Engineers

30 ft wide crossovers @ New York, National,  
Riverside, and Neptune-10 ft wide for all others  
All existing access points will have equivalent access  
All crossovers will be ADA compliant



Existing Ramps will be left in  
place for access until new  
crossover is completed







# SAND PLACEMENT



US Army Corps  
of Engineers ®

## Dredge *Illinois*

- The contractor will utilize a “cutter-head” style dredge
- This kind of dredge stays offshore at the sand borrow site and continuously pumps sand through a submerged pipeline to the beach
- Vessel can pump sand much faster than other dredge styles
- Can be more sensitive to weather conditions
- We expect to average, if working 24 hours a day, to build 200 feet of beach per day





US Army Corps  
of Engineers ®

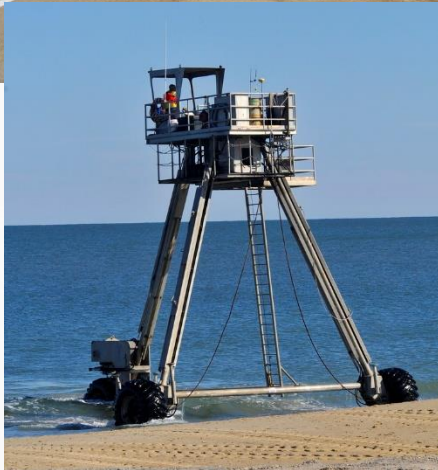






US Army Corps  
of Engineers ®

**Subline**  
Shown is an example of pipeline once it is laid on the beach. Subline resembles this but thicker line is utilized to slow down corrosion and prevent leaks. Subline will sit on the sea bottom.







US Army Corps  
of Engineers ®







US Army Corps  
of Engineers ®







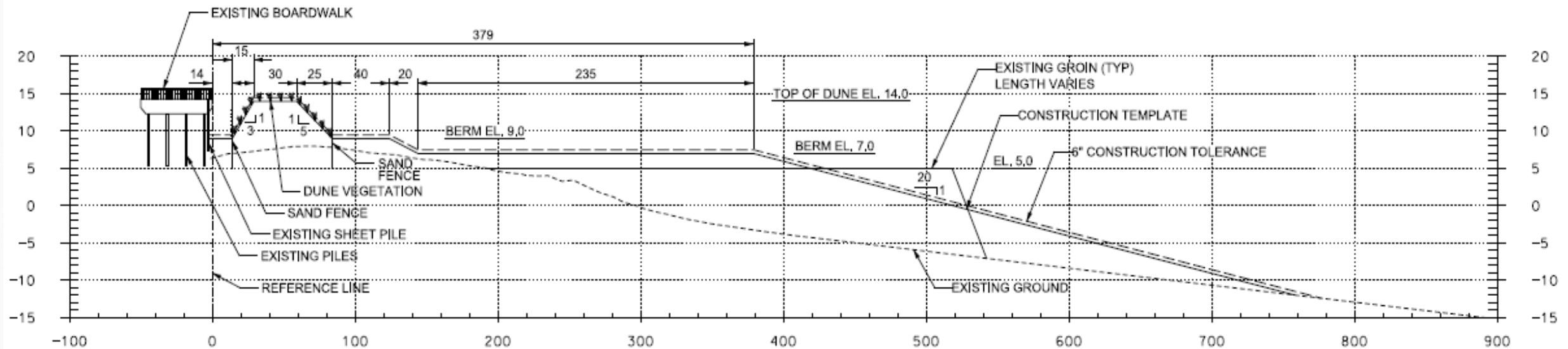
US Army Corps  
of Engineers®



## PROFILE OF BEACH DESIGN IN LONG BEACH



US Army Corps  
of Engineers®







## NEW YORK AND GRAND



US Army Corps  
of Engineers







- Beach closures for sand placement will be in moving 1000 ft increments (for scale, New York to Grand is approximately 800 feet)
- 1000 ft closure area will be blocked off from beachgoers, but will allow emergency access
- In some areas, once the beach is reopened, the 30 inch pipeline will remain in place
- New beach will be smooth, graded, and ready for use
- While visually unappealing, the remaining pipeline will have easily accessible “sand ramps” in convenient locations to cross over



US Army Corps  
of Engineers ®





## **Sand Pumping-Initial Work**



US Army Corps  
of Engineers ®

**Schedule is approximate and weather dependent**

Submerged Pipeline to slightly west of New York Ave: 7 July

Dredge Arrives at Borrow Site: 7 July

Sand Pumping earliest start: 10 July

Noise and 24 hour work variance hearing 17 July-will allow fast work  
(200ft per day)



- Pumping west from New York Ave pipe landing
- New York to Ohio will take approximately one month (*with variance in place*)
- This assumes at least 200 ft per day (about one West End block)
- Rolling 1000 ft restriction, access before and after pumping
- No new walkovers are required in West End area-ready for sand
- No bird restrictions in place
- Limitations in pipeline placement due to submerged utilities
- Borrow area selection is optimized for best material
- The rest of the pumping schedule is contingent of this work





Schedule Updates will be available in the following locations:



US Army Corps  
of Engineers ®

**<https://www.dec.ny.gov/lands/110710.html>**

And

**<http://www.nan.usace.army.mil/Missions/Civil-Works/Projects-in-New-York/Jones-Inlet-to-East-Rockaway-Inlet-Long-Beach/>**



US Army Corps  
of Engineers ®

# For More Information, Contact:

**Mr. Daniel Falt**  
**Project Manager**  
**USACE**  
**New York District**  
**917-790-8614**

**[Daniel.T.Falt@usace.army.mil](mailto:Daniel.T.Falt@usace.army.mil)**

**Ms. Sue McCormick, P.E.**  
**Program Manager**  
**NYSDEC**  
**518-402-8185**  
**[susan.mccormick@dec.ny.gov](mailto:susan.mccormick@dec.ny.gov)**

