

New York State Department of Environmental Conservation

Division of Environmental Remediation

Remedial Bureau B, 12th Floor

625 Broadway, Albany, New York 12233-7016

Phone: (518) 402-9768 • Fax: (518) 402-9773

Website: www.dec.ny.gov



Joe Martens
Commissioner

March 18, 2014

Mr. Gregory Goepfert
New York District, Corps of Engineers
Jacob Javits Federal Building
New York, New York 10278-0090

Re: Site Boundary Modification; Fort Totten Coast Guard Station
(Site ID No. 241017)

Dear Mr. Goepfert:

I am writing in response to your letter of September 25, 2013, wherein you request the department to "delist" the ball fields portion of the referenced site due to there being no indication that the area contained contamination at levels of concern.

Both the New York State Department of Environmental Conservation, as well as the New York State Department of Health, reviewed information in order to respond to your request, and concluded that there were no waste handling practices ever inferred to have occurred at the ball fields portion of the site, and further, data collected early in the Remedial Investigation process from the ball fields did not reveal any significant contamination. Based upon that review, the ball fields have been removed from the site description, and this area will require no further investigation under this program.

I should note that the reduction was handled internally as a "boundary modification" as opposed to a "delisting," but the net outcome is the same. The fort Totten Coast Guard site is now listed as being approximately 7.8 acres following the removal of the 1.8 acre ball field area from the description. The attached drawing from your request should adequately show the approximate current site boundary.

Please feel free to contact me if you should have any questions. Thank you.

Sincerely,

Jonathan Greco
Project Manager

Attachments



DEPARTMENT OF THE ARMY
 NEW YORK DISTRICT, CORPS OF ENGINEERS
 JACOB K. JAVITS FEDERAL BUILDING
 NEW YORK, N.Y. 10278-0090
 September 25, 2013

REPLY TO
 ATTENTION OF

Programs and Project Management Division

New York State Department of Environmental Conservation
 Division of Environmental Remediation,
 Remedial Bureau B
 c/o Mr. Jonathan Greco
 625 Broadway, 11th Floor
 Albany, New York 12233-7016

RE: PETITION TO DE-LIST PORTION OF ENGINEER SCHOOL / FORT TOTTEN,
 FORMERLY USED DEFENSE SITE (FUDS), PROPERTY No. C02NY0057
 [NYSDEC Site ID No. 241017]

Dear Mr. Greco:

Subsequent to our discussion, we are requesting that the ball field, located on the Engineer School / Fort Totten FUDS, be removed from the New York State Department of Environmental Conservation's listing on the *Registry of Inactive Hazardous Waste Sites*.

The U. S. Coast Guard submitted the analysis results of soil samples taken by their contractor, and, in a letter dated December 2, 1996, the New York State Department of Health determined that "...no contaminants were detected in the soil at levels that would pose a health concern for users of the ballfield." A copy of that letter is enclosed, as well as a figure depicting the ball field location.

I may be reached at (917) 790-8235, if you have any questions regarding this matter.

Thank you in advance for your consideration of this request.

Sincerely,


 Gregory J. Goepfert
 Project Manager

Encls.

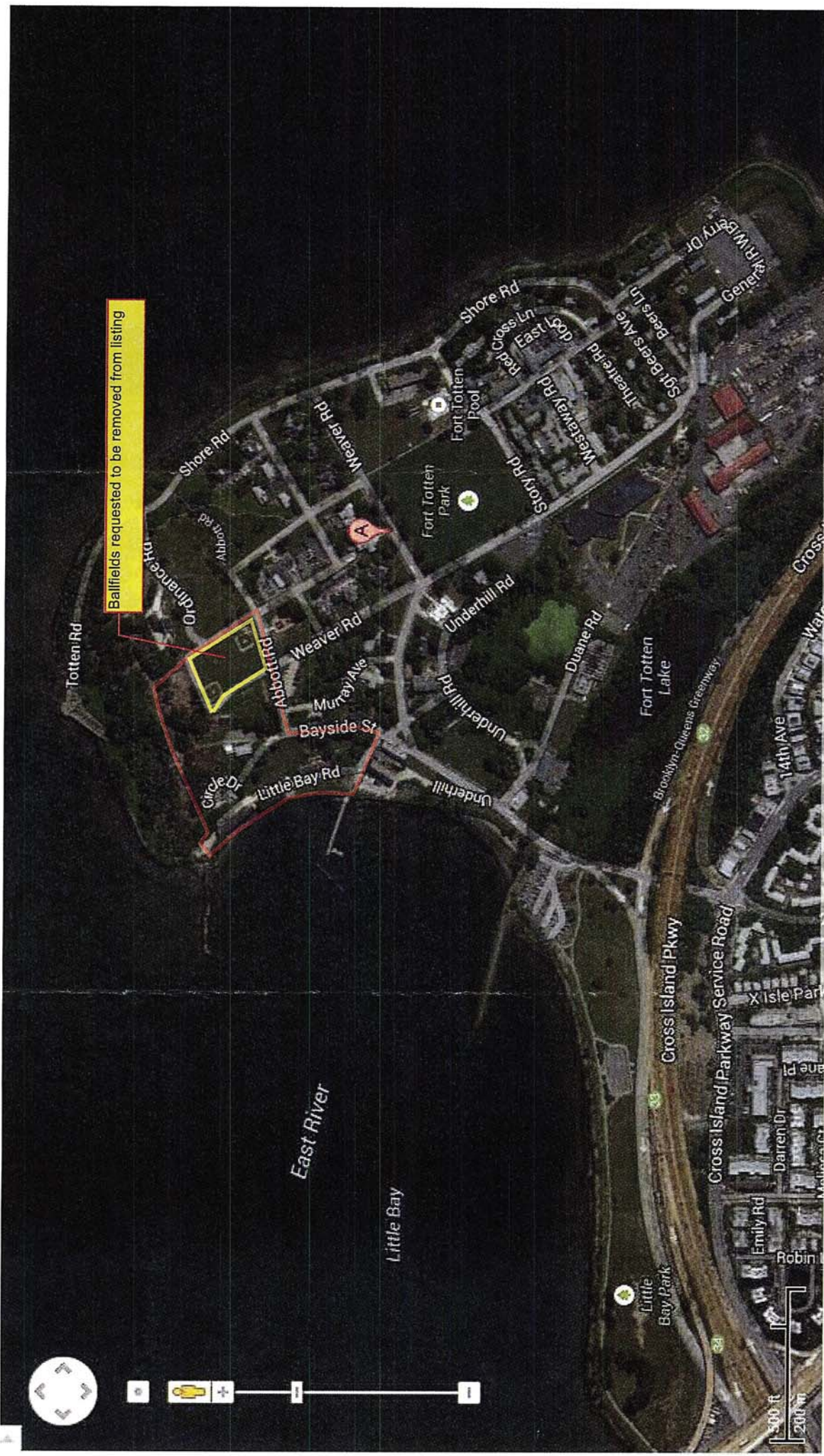
cc: State of New York, Department of Health (Ms. Bridgett Callaghan), w/ encls.
 U. S. Coast Guard, Sector New York (Mr. Jim Kerr), w/encls.
 U. S. Army Corps of Engineers, New England District (Mr. Dean Brammer), w/encls.

RECEIVED

OCT 31 2013

REMEDIAL BUREAU D

Ballfields requested to be removed from listing





STATE OF NEW YORK
DEPARTMENT OF HEALTH

Office of Public Health

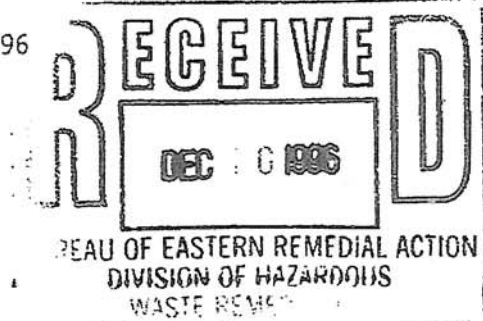
11 University Place

Albany, New York 12203-3399

Barbara A. DeBuono, M.D., M.P.H.
Commissioner

December 2, 1996

Ms. Rachel Marino
Environmental Branch Chief
U.S. Department of Transportation
US Coast Guard
300 Metro Center Blvd.
Warwick, Rhode Island 02886



RE: Ballfield Soil Data Summary
Site# 241017
Fort Totten
Flushing, Queens

Dear Ms. Marino:

Thank you for forwarding the data for the soil samples that your contractor collected on September 3, 1996 from the baseball field located on the US Coast Guard property on Fort Totten. I have reviewed the data and have the following comments.

In summary, as we have previously discussed, the purpose of this sampling was to determine the potential exposure of contaminants to children playing on the ballfield. Composite soil samples were collected from 1st, 2nd and 3rd bases, homeplate and the pitcher's mound at 0-1", 1-3" and 3-6" depths. These sample locations were chosen as being representative of ball playing activities. The samples were analyzed for volatiles, semivolatiles, pesticides and PCBs and metals. Based upon our review of the data, no contaminants were detected in the soil at levels that would pose a health concern for users of the ballfield.

Thank you for your cooperation in obtaining the samples and analyzing them. If you have any questions, please call me at (518) 458-6305.

Sincerely,

Kim Evans
Research Scientist I
Bureau of Environmental Exposure
Investigation

sg/96337PRO0045

CHARLES M. SHAPIRO INCORPORATED

ENVIRONMENTAL SERVICES LABORATORY

(516) 291-2300

181 South Franklin Avenue, Suite 305 Valley Stream, N.Y. 11581

FAX: (516) 291-5425

SUMMARY OF PRIORITY POLLUTANT ANALYSES (SOLID MATRIX)

TABLE #1

SAMPLE NO.: 1 DESCRIPTION: SOIL SAMPLE- 1 ST BASE 0-1 INCH BELOW GRADE

CLIENT: U.S.C.G.S. WILLETS POINT, FORT TOTTEN, N.Y.

JOB NO.: 96-625

CONTAMINANT	CONC. UG/G	CONTAMINANT	CONC. UG/G	CONTAMINANT	CONC. UG/G
ACENAPHTHENE	<0.19	DIBENZO(A,H)ANTHRACENE	<0.25	LEAD	7.09
ACENAPHTHYLENE	<0.35	1,2 DICHLOROBENZENE	<0.10	MERCURY	0.035
ACROLEIN	<0.20	1,3 DICHLOROBENZENE	<0.10	NAPHTHALENE	<0.16
ACRYLONITRILE	<0.22	1,4 DICHLOROBENZENE	<0.10	NICKEL	9.5
ALDRIN	<0.19	3,3 DICHLOROBENZIDINE	<1.65	NITROBENZENE	<0.19
ANTIMONY	47.84	1,1 DICHLOROETHANE	<0.10	METHYLENE CHLORIDE	<0.10
ANTHRACENE	<0.19	1,2 DICHLOROETHANE	<0.10	2-NITROPHENOL	<0.36
ARSENIC	1.92	1,1 DICHLOROETHENE	<0.10	4-NITROPHENOL	<0.24
BENZO(A)ANTHRACENE	<0.78	TNS-1,2-DICHLOROETHENE	<0.10	4,6-DINITRO-2-METHYLPHENOL	<0.24
BENZENE	<0.10	DICHLOROBROMOMETHANE	<0.10	N-NITROSODIMETHYLAMINE	<0.21
BENZIDINE	<4.4	2,4 DICHLOROPHENOL	<0.27	N-NITROSODIPHENYLAMINE	<0.19
BENZO(A)PYRENE	<0.25	1,2 DICHLOROPROPANE	<0.10	N-NITROSODIPROPYLAMINE	<3.0
BENZO(B)FLUORANTHENE	<0.48	1,3 DICHLOROPROPENE	<0.10	PCB 1242	<2.2
BENZO(K)FLUORANTHENE	<0.25	DIELDRIN	<0.25	PCB 1254	<3.0
BENZO(G,H,I)PERYLENE	<0.41	2,4 DIMETHYLPHENOL	<0.27	PCB 1221	<1.7
BERYLLIUM	1.22	DIETHYL PHTHALATE	<0.22	PCB 1232	<3.5
BROMOFORM	<0.10	DIMETHYL PHTHALATE	<0.16	PCB 1248	<1.7
BROMOMETHANE	<0.10	2,4 DINITROTOLUENE	<0.57	PCB 1260	<2.5
4-BROMOPHENYL PHENYL ETHER	<0.19	2,6 DINITROTOLUENE	<0.19	PCB 1016	<2.5
CADMIUM	0.41	2,4 DINITROPHENOL	<0.42	PHENOL	<0.15
CARBON TETRACHLORIDE	<0.10	DIOXIN(2,3,7,8-TCDD)	-	PENTACHLOROPHENOL	<0.36
CHLORDANE	<4.69	1,2 DIPHENYLHYDRAZINE	<3.1	PHENANTHRENE	<0.54
CHLOROBENZENE	<0.10	A-ENDOSULFAN	<0.21	BIS-2ETHYLHEXYL PHTHALATE	2.63
DIBROMOCHLOROMETHANE	<0.10	B-ENDOSULFAN	<0.42	BUTYL BENZYL PHTHALATE	<0.25
CHLOROETHANE	<0.10	ENDOSULFAN SULFATE	<0.56	DI-N-BUTYL PHTHALATE	9.18
BIS-2CHLOROETHYL ETHER	<0.57	ENDRIN	<0.26	DI-N-OCTYL PHTHALATE	<0.25
BIS-2CHLOROETHOXY METHANE	<0.53	ENDRIN ALDEHYDE	<0.37	PYRENE	<0.19
2-CHLOROETHYL VINYL ETHER	<0.10	ETHYLBENZENE	<0.10	SELENIUM	0.46
4-CHLORO-3-METHYL PHENOL	<0.30	FLUORENE	<0.19	SILVER	<0.73
CHLOROMETHANE	<0.40	FLUORANTHENE	<0.22	1,1,2,2-TETRACHLOROETHENE	<0.10
CHLOROFORM	<0.10	HEPTACHLOR	<0.19	TETRACHLOROETHYLENE	<0.10
2-CHLOROPHENOL	<0.33	HEPTACHLOR EPOXIDE	<0.22	THALLIUM	6.91
BIS-2CHLOROISOPROPYL ETHER	<0.57	HEXACHLOROETHANE	<0.16	TOLUENE	<0.10
2-CHLORONAPHTHALENE	<0.19	HEXACHLOROBENZENE	<0.19	1,2,4 TRICHLOROBENZENE	<0.19
4-CHLOROPHENYL PHENYL ETHER	<0.19	HEXACHLOROBUTADIENE	<0.09	1,1,1 TRICHLOROETHANE	<0.10
CHROMIUM (T)	18.84	LINDANE	<0.15	1,1,2 TRICHLOROETHANE	<0.10
CHRYSENE	<0.25	A-BHC	<0.35	TRICHLOROETHYLENE	<0.10
COPPER	7.39	B-BHC	<0.42	2,4,6-TRICHLOROPHENOL	<0.27
CYANIDE	1.489	D-BHC	<0.31	VINYL CHLORIDE	<0.10
1,4-DDT	<0.47	HEXACHLOROCYCLOPENTADIENE	<0.12	ZINC	34.67
4,4-DDE	<0.56	INDENO(1,2,3-CD)PYRENE	<0.37	TOXAPHENE	<8.7
4,4-DDD	<0.28	ISOPHORONE	<0.22		

KEY: UG/G = PARTS PER MILLION ☐ = DETECTED COMPOUND ☐ = NOT TESTED

NEW YORK STATE ENVIRONMENTAL LABORATORY NO. 10667

CHARLES M. SHAPIRO INCORPORATED
ENVIRONMENTAL SERVICES LABORATORY

(516) 291-2300

181 South Franklin Avenue, Suite 305 Valley Stream, N.Y. 11581

FAX: (516) 291-5425

SUMMARY OF PRIORITY POLLUTANT ANALYSES (SOLID MATRIX)

TABLE # 2

SAMPLE NO.: 2 DESCRIPTION: SOIL SAMPLE- 1 ST BASE 1-3 INCHES BELOW GRADE

CLIENT: U.S.C.G.S. WILLETS POINT, FORT TOTTEN, N.Y.

JOB NO.: 96-625

CONTAMINANT	CONC. UG/G	CONTAMINANT	CONC. UG/G	CONTAMINANT	CONC. UG/G
ACENAPHTHENE	<0.19	DIBENZO(A,H)ANTHRACENE	<0.25	LEAD	20.94
ACENAPHTHYLENE	<0.35	1,2 DICHLOROBENZENE	<0.10	MERCURY	0.016
ACROLEIN	<0.20	1,3 DICHLOROBENZENE	<0.10	NAPHTHALENE	<0.16
ACRYLONITRILE	<0.22	1,4 DICHLOROBENZENE	<0.10	NICKEL	8.79
ALDRIN	<0.19	3,3 DICHLOROBENZIDINE	<1.65	NITROBENZENE	<0.19
ANTIMONY	30.81	1,1 DICHLOROETHANE	<0.10	METHYLENE CHLORIDE	<0.10
ANTHRACENE	<0.19	1,2 DICHLOROETHANE	<0.10	2-NITROPHENOL	<0.36
ARSENIC	4.23	1,1 DICHLOROETHENE	<0.10	4-NITROPHENOL	<0.24
BENZO(A)ANTHRACENE	<0.78	TNS-1,2-DICHLOROETHENE	<0.10	4,6-DINITRO-2-METHYLPHENOL	<0.24
BENZENE	<0.10	DICHLOROBROMOMETHANE	<0.10	N-NITROSODIMETHYLAMINE	<0.21
BENZIDINE	<4.4	2,4 DICHLOROPHENOL	<0.27	N-NITROSODIPHENYLAMINE	<0.19
BENZO(A)PYRENE	<0.25	1,2 DICHLOROPROPANE	<0.10	N-NITROSODIPROPYLAMINE	<3.0
BENZO(B)FLUORANTHENE	<0.48	1,3 DICHLOROPROPENE	<0.10	PCB 1242	<2.2
BENZO(K)FLUORANTHENE	<0.25	DIELDRIN	<0.25	PCB 1254	<3.0
BENZO(G,H,I)PERYLENE	<0.41	2,4 DIMETHYLPHENOL	<0.27	PCB 1221	<1.7
BERYLLIUM	1.22	DIETHYL PHTHALATE	<0.22	PCB 1232	<3.5
BROMOFORM	<0.10	DIMETHYL PHTHALATE	<0.16	PCB 1248	<1.7
BROMOMETHANE	<0.10	2,4 DINITROTOLUENE	<0.57	PCB 1260	<2.5
4-BROMOPHENYL PHENYL ETHER	<0.19	2,6 DINITROTOLUENE	<0.19	PCB 1016	<2.5
CADMIUM	0.41	2,4 DINITROPHENOL	<0.42	PHENOL	<0.15
CARBON TETRACHLORIDE	<0.10	DIOXIN(2,3,7,8-TCDD)	-	PENTACHLOROPHENOL	<0.36
CHLORDANE	<4.69	1,2 DIPHENYLHYDRAZINE	<3.1	PHENANTHRENE	<0.54
CHLOROBENZENE	<0.10	A-ENDOSULFAN	<0.21	BIS-2ETHYLHEXYL PHTHALATE	0.29
DIBROMOCHLOROMETHANE	<0.10	B-ENDOSULFAN	<0.42	BUTYL BENZYL PHTHALATE	<0.25
CHLOROETHANE	<0.10	ENDOSULFAN SULFATE	<0.56	DI-N-BUTYL PHTHALATE	4.48
BIS-2CHLOROETHYL ETHER	<0.57	ENDRIN	<0.26	DI-N-OCTYL PHTHALATE	<0.25
BIS-2CHLOROETHOXY METHANE	<0.53	ENDRIN ALDEHYDE	<0.37	PYRENE	<0.19
2-CHLOROETHYL VINYL ETHER	<0.10	ETHYLBENZENE	<0.10	SELENIUM	0.2
4-CHLORO-3-METHYL PHENOL	<0.30	FLUORENE	<0.19	SILVER	<0.73
CHLOROMETHANE	<0.40	FLUORANTHENE	<0.22	1,1,2,2-TETRACHLOROETHENE	<0.10
CHLOROFORM	<0.10	HEPTACHLOR	<0.19	TETRACHLOROETHYLENE	<0.10
2-CHLOROPHENOL	<0.33	HEPTACHLOR EPOXIDE	<0.22	THALLIUM	6.94
BIS-2CHLOROISOPROPYL ETHER	<0.57	HEXACHLOROETHANE	<0.16	TOLUENE	<0.10
2-CHLORONAPHTHALENE	<0.19	HEXACHLOROBENZENE	<0.19	1,2,4 TRICHLOROBENZENE	<0.19
4-CHLOROPHENYL PHENYL ETHER	<0.19	HEXACHLOROBUTADIENE	<0.09	1,1,1 TRICHLOROETHANE	<0.10
CHROMIUM (T)	20.27	LINDANE	<0.15	1,1,2 TRICHLOROETHANE	<0.10
CHRYSENE	<0.25	A-BHC	<0.35	TRICHLOROETHYLENE	<0.10
COPPER	4.4	B-BHC	<0.42	2,4,6-TRICHLOROPHENOL	<0.27
CYANIDE	1.664	D-BHC	<0.31	VINYL CHLORIDE	<0.10
4,4-DDT	<0.47	HEXACHLOROCYCLOPENTADIENE	<0.12	ZINC	28.92
4,4-DDE	<0.56	INDENO(1,2,3-CD)PYRENE	<0.37	TOXAPHENE	<8.7
4,4-DDD	<0.28	ISOPHORONE	<0.22		

KEY: UG/G = PARTS PER MILLION

☐ = DETECTED COMPOUND

☐ =

☐ = NOT TESTED

NEW YORK STATE ENVIRONMENTAL LABORATORY NO. 10667

CHARLES M. SHAPIRO INCORPORATED

ENVIRONMENTAL SERVICES LABORATORY

(516) 291-2300

181 South Franklin Avenue, Suite 305 Valley Stream, N.Y. 11581

FAX: (516) 291-5425

SUMMARY OF PRIORITY POLLUTANT ANALYSES (SOLID MATRIX)

TABLE # 3

SAMPLE NO.: 3 DESCRIPTION: SOIL SAMPLE- 1 ST BASE 3-6 INCHES BELOW GRADE

CLIENT: U.S.C.G.S. WILLETS POINT, FORT TOTTEN, N.Y.

JOB NO.: 96-625

CONTAMINANT	CONC. UG/G	CONTAMINANT	CONC. UG/G	CONTAMINANT	CONC. UG/G
ACENAPHTHENE	<0.19	DIBENZO(A,H)ANTHRACENE	<0.25	LEAD	39.18
ACENAPHTHYLENE	<0.35	1,2 DICHLOROBENZENE	<0.10	MERCURY	0.007
ACROLEIN	<0.20	1,3 DICHLOROBENZENE	<0.10	NAPHTHALENE	<0.16
ACRYLONITRILE	<0.22	1,4 DICHLOROBENZENE	<0.10	NICKEL	13.64
ALDRIN	<0.19	3,3 DICHLOROBENZIDINE	<1.65	NITROBENZENE	<0.19
ANTIMONY	26.45	1,1 DICHLOROETHANE	<0.10	METHYLENE CHLORIDE	<0.10
ANTHRACENE	<0.19	1,2 DICHLOROETHANE	<0.10	2-NITROPHENOL	<0.36
ARSENIC	1.6	1,1 DICHLOROETHENE	<0.10	4-NITROPHENOL	<0.24
BENZO(A)ANTHRACENE	<0.78	TNS-1,2-DICHLOROETHENE	<0.10	4,6-DINITRO-2-METHYLPHENOL	<0.24
BENZENE	<0.10	DICHLOROBROMOMETHANE	<0.10	N-NITROSODIMETHYLAMINE	<0.21
BENZIDINE	<4.4	2,4 DICHLOROPHENOL	<0.27	N-NITROSODIPHENYLAMINE	<0.19
BENZO(A)PYRENE	<0.25	1,2 DICHLOROPROPANE	<0.10	N-NITROSODIPROPYLAMINE	<3.0
BENZO(B)FLUORANTHENE	<0.48	1,3 DICHLOROPROPENE	<0.10	PCB 1242	<2.2
BENZO(K)FLUORANTHENE	<0.25	DIELDRIN	<0.25	PCB 1254	<3.0
BENZO(G,H,I)PERYLENE	<0.41	2,4 DIMETHYLPHENOL	<0.27	PCB 1221	<1.7
BERYLLIUM	1.05	DIETHYL PHTHALATE	<0.22	PCB 1232	<3.5
BROMOFORM	<0.10	DIMETHYL PHTHALATE	<0.16	PCB 1248	<1.7
BROMOMETHANE	<0.10	2,4 DINITROTOLUENE	<0.57	PCB 1260	<2.5
4-BROMOPHENYL PHENYL ETHER	<0.19	2,6 DINITROTOLUENE	<0.19	PCB 1016	<2.5
CADMIUM	0.52	2,4 DINITROPHENOL	<0.42	PHENOL	<0.15
CARBON TETRACHLORIDE	<0.10	DIOXIN(2,3,7,8-TCDD)	-	PENTACHLOROPHENOL	<0.36
CHLORDANE	<4.69	1,2 DIPHENYLHYDRAZINE	<3.1	PHENANTHRENE	<0.54
CHLOROBENZENE	<0.10	A-ENDOSULFAN	<0.21	BIS-2ETHYLHEXYL PHTHALATE	0.58
DIBROMOCHLOROMETHANE	<0.10	B-ENDOSULFAN	<0.42	BUTYL BENZYL PHTHALATE	<0.25
CHLOROETHANE	<0.10	ENDOSULFAN SULFATE	<0.56	DI-N-BUTYL PHTHALATE	3.13
BIS-2CHLOROETHYL ETHER	<0.57	ENDRIN	<0.26	DI-N-OCTYL PHTHALATE	<0.25
BIS-2CHLOROETHOXY METHANE	<0.53	ENDRIN ALDEHYDE	<0.37	PYRENE	<0.19
2-CHLOROETHYL VINYL ETHER	<0.10	ETHYLBENZENE	<0.10	SELENIUM	0.07
4-CHLORO-3-METHYL PHENOL	<0.30	FLUORENE	<0.19	SILVER	0.73
CHLOROMETHANE	<0.40	FLUORANTHENE	<0.22	1,1,2,2-TETRACHLOROETHENE	<0.10
CHLOROFORM	<0.10	HEPTACHLOR	<0.19	TETRACHLOROETHYLENE	<0.10
2-CHLOROPHENOL	<0.33	HEPTACHLOR EPOXIDE	<0.22	THALLIUM	6.92
BIS-2CHLOROISOPROPYL ETHER	<0.57	HEXACHLOROETHANE	<0.16	TOLUENE	<0.10
2-CHLORONAPHTHALENE	<0.19	HEXACHLOROBENZENE	<0.19	1,2,4 TRICHLOROBENZENE	<0.19
4-CHLOROPHENYL PHENYL ETHER	<0.19	HEXACHLOROBUTADIENE	<0.09	1,1,1 TRICHLOROETHANE	<0.10
CHROMIUM (T)	20.91	LINDANE	<0.15	1,1,2 TRICHLOROETHANE	<0.10
CHRYSENE	<0.25	A-BHC	<0.35	TRICHLOROETHYLENE	<0.10
COPPER	9.41	B-BHC	<0.42	2,4,6-TRICHLOROPHENOL	<0.27
CYANIDE	0.176	D-BHC	<0.31	VINYL CHLORIDE	<0.10
4,4-DDT	<0.47	HEXACHLOROCYCLOPENTADIENE	<0.12	ZINC	42.02
4,4-DDE	<0.56	INDENO(1,2,3-CD)PYRENE	<0.37	TOXAPHENE	<8.7
4,4-DDD	<0.28	ISOPHORONE	<0.22		

KEY: UG/G = PARTS PER MILLION ☒ = DETECTED COMPOUND ☐ = NOT TESTED

NEW YORK STATE ENVIRONMENTAL LABORATORY NO. 10667

CHARLES M. SHAPIRO INCORPORATED

ENVIRONMENTAL SERVICES LABORATORY

(516) 291-2300

181 South Franklin Avenue, Suite 305 Valley Stream, N.Y. 11581

FAX: (516) 291-5425

SUMMARY OF PRIORITY POLLUTANT ANALYSES (SOLID MATRIX)

TABLE # 4

SAMPLE NO.: 4 DESCRIPTION: SOIL SAMPLE- 2 ND BASE 0-1 INCH BELOW GRADE

CLIENT: U.S.C.G.S. WILLETS POINT, FORT TOTTEN, N.Y.

JOB NO.: 96-625

CONTAMINANT	CONC. UG/G	CONTAMINANT	CONC. UG/G	CONTAMINANT	CONC. UG/G
ACENAPHTHENE	<0.19	DIBENZO(A,H)ANTHRACENE	<0.25	LEAD	13.26
ACENAPHTHYLENE	<0.35	1,2 DICHLOROBENZENE	<0.10	MERCURY	0.007
ACROLEIN	<0.20	1,3 DICHLOROBENZENE	<0.10	NAPHTHALENE	<0.16
ACRYLONITRILE	<0.22	1,4 DICHLOROBENZENE	<0.10	NICKEL	9.150
ALDRIN	<0.19	3,3 DICHLOROBENZIDINE	<1.65	NITROBENZENE	<0.19
ANTIMONY	35.08	1,1 DICHLOROETHANE	<0.10	METHYLENE CHLORIDE	<0.10
ANTHRACENE	<0.19	1,2 DICHLOROETHANE	<0.10	2-NITROPHENOL	<0.36
ARSENIC	1.18	1,1 DICHLOROETHENE	<0.10	4-NITROPHENOL	<0.24
BENZO(A)ANTHRACENE	<0.78	TNS-1,2-DICHLOROETHENE	<0.10	4,6-DINITRO-2-METHYLPHENOL	<0.24
BENZENE	<0.10	DICHLOROBROMOMETHANE	<0.10	N-NITROSODIMETHYLAMINE	<0.21
BENZIDINE	<4.4	2,4 DICHLOROPHENOL	<0.27	N-NITROSODIPHENYLAMINE	<0.19
BENZO(A)PYRENE	<0.25	1,2 DICHLOROPROPANE	<0.10	N-NITROSODIPROPYLAMINE	<3.0
BENZO(B)FLUORANTHENE	<0.48	1,3 DICHLOROPROPENE	<0.10	PCB 1242	<2.2
BENZO(K)FLUORANTHENE	<0.25	DIELDRIN	<0.25	PCB 1254	<3.0
BENZO(G,H,I)PERYLENE	<0.41	2,4 DIMETHYLPHENOL	<0.27	PCB 1221	<1.7
BERYLLIUM	1.05	DIETHYL PHTHALATE	<0.22	PCB 1232	<3.5
BROMOFORM	<0.10	DIMETHYL PHTHALATE	<0.16	PCB 1248	<1.7
BROMOMETHANE	<0.10	2,4 DINITROTOLUENE	<0.57	PCB 1260	<2.5
4-BROMOPHENYL PHENYL ETHER	<0.19	2,6 DINITROTOLUENE	<0.19	PCB 1016	<2.5
CADMIUM	0.3	2,4 DINITROPHENOL	<0.42	PHENOL	<0.15
CARBON TETRACHLORIDE	<0.10	DIOXIN(2,3,7,8-TCDD)	-	PENTACHLOROPHENOL	<0.36
CHLORDANE	<4.69	1,2 DIPHENYLHYDRAZINE	<3.1	PHENANTHRENE	<0.54
CHLOROBENZENE	<0.10	A-ENDOSULFAN	<0.21	BIS-2ETHYLHEXYL PHTHALATE	<0.25
DIBROMOCHLOROMETHANE	<0.10	B-ENDOSULFAN	<0.42	BUTYL BENZYL PHTHALATE	<0.25
CHLOROETHANE	<0.10	ENDOSULFAN SULFATE	<0.56	DI-N-BUTYL PHTHALATE	2.37
BIS-2CHLOROETHYL ETHER	<0.57	ENDRIN	<0.26	DI-N-OCTYL PHTHALATE	<0.25
BIS-2CHLOROETHOXY METHANE	<0.53	ENDRIN ALDEHYDE	<0.37	PYRENE	<0.19
2-CHLOROETHYL VINYL ETHER	<0.10	ETHYLBENZENE	<0.10	SELENIUM	0.33
4-CHLORO-3-METHYL PHENOL	<0.30	FLUORENE	<0.19	SILVER	<0.73
CHLOROMETHANE	<0.40	FLUORANTHENE	<0.22	1,1,2,2-TETRACHLOROETHENE	<0.10
CHLOROFORM	<0.10	HEPTACHLOR	<0.19	TETRACHLOROETHYLENE	<0.10
2-CHLOROPHENOL	<0.33	HEPTACHLOR EPOXIDE	<0.22	THALLIUM	6.93
BIS-2CHLOROISOPROPYL ETHER	<0.57	HEXACHLOROETHANE	<0.16	TOLUENE	<0.10
2-CHLORONAPHTHALENE	<0.19	HEXACHLOROBENZENE	<0.19	1,2,4 TRICHLOROBENZENE	<0.19
4-CHLOROPHENYL PHENYL ETHER	<0.19	HEXACHLOROBUTADIENE	<0.09	1,1,1 TRICHLOROETHANE	<0.10
CHROMIUM (T)	18.89	LINDANE	<0.15	1,1,2 TRICHLOROETHANE	<0.10
CHRYSENE	<0.25	A-BHC	<0.35	TRICHLOROETHYLENE	<0.10
COPPER	3.89	B-BHC	<0.42	2,4,6-TRICHLOROPHENOL	<0.27
CYANIDE	0.176	D-BHC	<0.31	VINYL CHLORIDE	<0.10
4,4-DDT	<0.47	HEXACHLOROCYCLOPENTADIENE	<0.12	ZINC	26.78
4,4-DDE	<0.56	INDENO(1,2,3-CD)PYRENE	<0.37	TOXAPHENE	<8.7
4,4-DDD	<0.28	ISOPHORONE	<0.22		

KEY: UG/G = PARTS PER MILLION ☐ = DETECTED COMPOUND ☐ = NOT TESTED

NEW YORK STATE ENVIRONMENTAL LABORATORY NO. 10667

CHARLES M. SHAPIRO INCORPORATED

ENVIRONMENTAL SERVICES LABORATORY

(516) 291-2300

181 South Franklin Avenue, Suite 305 Valley Stream, N.Y. 11581

FAX: (516) 291-5425

SUMMARY OF PRIORITY POLLUTANT ANALYSES (SOLID MATRIX)

TABLE # 5

SAMPLE NO.: 5 DESCRIPTION: SOIL SAMPLE- 2 ND BASE 1-3 INCHES BELOW GRADE

CLIENT: U.S.C.G.S. WILLETS POINT, FORT TOTTEN, N.Y.

JOB NO.: 96-625

CONTAMINANT	CONC. UG/G	CONTAMINANT	CONC. UG/G	CONTAMINANT	CONC. UG/G
ACENAPHTHENE	<0.19	DIBENZO(A,H)ANTHRACENE	<0.25	LEAD	10.2
ACENAPHTHYLENE	<0.35	1,2 DICHLOROBENZENE	<0.10	MERCURY	0.007
ACROLEIN	<0.20	1,3 DICHLOROBENZENE	<0.10	NAPHTHALENE	<0.16
ACRYLONITRILE	<0.22	1,4 DICHLOROBENZENE	<0.10	NICKEL	7.98
ALDRIN	<0.19	3,3 DICHLOROBENZIDINE	<1.65	NITROBENZENE	<0.19
ANTIMONY	17.9	1,1 DICHLOROETHANE	<0.10	METHYLENE CHLORIDE	<0.10
ANTHRACENE	<0.19	1,2 DICHLOROETHANE	<0.10	2-NITROPHENOL	<0.36
ARSENIC	1.63	1,1 DICHLOROETHENE	<0.10	4-NITROPHENOL	<0.24
BENZO(A)ANTHRACENE	<0.78	TNS-1,2-DICHLOROETHENE	<0.10	4,6-DINITRO-2-METHYLPHENOL	<0.24
BENZENE	<0.10	DICHLOROBROMOMETHANE	<0.10	N-NITROSODIMETHYLAMINE	<0.21
BENZIDINE	<4.4	2,4 DICHLOROPHENOL	<0.27	N-NITROSODIPHENYLAMINE	<0.19
BENZO(A)PYRENE	<0.25	1,2 DICHLOROPROPANE	<0.10	N-NITROSODIPROPYLAMINE	<3.0
BENZO(B)FLUORANTHENE	<0.48	1,3 DICHLOROPROPENE	<0.10	PCB 1242	<2.2
BENZO(K)FLUORANTHENE	<0.25	DIELDRIN	<0.25	PCB 1254	<3.0
BENZO(G,H,I)PERYLENE	<0.41	2,4 DIMETHYLPHENOL	<0.27	PCB 1221	<1.7
BERYLLIUM	1.05	DIETHYL PHTHALATE	<0.22	PCB 1232	<3.5
BROMOFORM	<0.10	DIMETHYL PHTHALATE	<0.16	PCB 1248	<1.7
BROMOMETHANE	<0.10	2,4 DINITROTOLUENE	<0.57	PCB 1260	<2.5
4-BROMOPHENYL PHENYL ETHER	<0.19	2,6 DINITROTOLUENE	<0.19	PCB 1016	<2.5
CADMIUM	0.08	2,4 DINITROPHENOL	<0.42	PHENOL	<0.15
CARBON TETRACHLORIDE	<0.10	DIOXIN(2,3,7,8-TCDD)	-	PENTACHLOROPHENOL	<0.36
CHLORDANE	<4.69	1,2 DIPHENYLHYDRAZINE	<3.1	PHENANTHRENE	<0.54
CHLOROBENZENE	<0.10	A-ENDOSULFAN	<0.21	BIS-2ETHYLHEXYL PHTHALATE	<0.25
DIBROMOCHLOROMETHANE	<0.10	B-ENDOSULFAN	<0.42	BUTYL BENZYL PHTHALATE	<0.25
CHLOROETHANE	<0.10	ENDOSULFAN SULFATE	<0.56	DI-N-BUTYL PHTHALATE	4.99
BIS-2CHLOROETHYL ETHER	<0.57	ENDRIN	<0.26	DI-N-OCTYL PHTHALATE	<0.25
BIS-2CHLOROETHOXY METHANE	<0.53	ENDRIN ALDEHYDE	<0.37	PYRENE	<0.19
2-CHLOROETHYL VINYL ETHER	<0.10	ETHYLBENZENE	<0.10	SELENIUM	0.2
4-CHLORO-3-METHYL PHENOL	<0.30	FLUORENE	<0.19	SILVER	<0.73
CHLOROMETHANE	<0.40	FLUORANTHENE	<0.22	1,1,2,2-TETRACHLOROETHENE	<0.10
CHLOROFORM	<0.10	HEPTACHLOR	<0.19	TETRACHLOROETHYLENE	<0.10
2-CHLOROPHENOL	<0.33	HEPTACHLOR EPOXIDE	<0.22	THALLIUM	3.41
BIS-2CHLOROISOPROPYL ETHER	<0.57	HEXACHLOROETHANE	<0.16	TOLUENE	<0.10
2-CHLORONAPHTHALENE	<0.19	HEXACHLOROBENZENE	<0.19	1,2,4 TRICHLOROBENZENE	<0.19
4-CHLOROPHENYL PHENYL ETHER	<0.19	HEXACHLOROBUTADIENE	<0.09	1,1,1 TRICHLOROETHANE	<0.10
CHROMIUM (T)	14.83	LINDANE	<0.15	1,1,2 TRICHLOROETHANE	<0.10
CHRYSENE	<0.25	A-BHC	<0.35	TRICHLOROETHYLENE	<0.10
COPPER	2.89	B-BHC	<0.42	2,4,6-TRICHLOROPHENOL	<0.27
CYANIDE	1.314	D-BHC	<0.31	VINYL CHLORIDE	<0.10
1,4-DDT	<0.47	HEXACHLOROCYCLOPENTADIENE	<0.12	ZINC	23.37
1,4-DDE	<0.56	INDENO(1,2,3-CD)PYRENE	<0.37	TOXAPHENE	<8.7
4,4-DDD	<0.28	ISOPHORONE	<0.22		

KEY: UG/G = PARTS PER MILLION

☐ = DETECTED COMPOUND

— = NOT TESTED

NEW YORK STATE ENVIRONMENTAL LABORATORY NO. 10667

CHARLES M. SHAPIRO INCORPORATED

ENVIRONMENTAL SERVICES LABORATORY

(516) 291-2300

181 South Franklin Avenue, Suite 305 Valley Stream, N.Y. 11581

FAX: (516) 291-5425

SUMMARY OF PRIORITY POLLUTANT ANALYSES (SOLID MATRIX)

TABLE # 6

SAMPLE NO.: 6 DESCRIPTION: SOIL SAMPLE- 2 ND BASE 3-6 INCHES BELOW GRADE

CLIENT: U.S.C.G.S. WILLETS POINT, FORT TOTTEN, N.Y.

JOB NO.: 96-625

CONTAMINANT	CONC. UG/G	CONTAMINANT	CONC. UG/G	CONTAMINANT	CONC. UG/G
ACENAPHTHENE	<0.19	DIBENZO(A,H)ANTHRACENE	<0.25	LEAD	31.64
ACENAPHTHYLENE	<0.35	1,2 DICHLOROBENZENE	<0.10	MERCURY	0.026
ACROLEIN	<0.20	1,3 DICHLOROBENZENE	<0.10	NAPHTHALENE	<0.16
ACRYLONITRILE	<0.22	1,4 DICHLOROBENZENE	<0.10	NICKEL	11.78
ALDRIN	<0.19	3,3 DICHLOROBENZIDINE	<1.65	NITROBENZENE	<0.19
ANTIMONY	13.58	1,1 DICHLOROETHANE	<0.10	METHYLENE CHLORIDE	<0.10
ANTHRACENE	<0.19	1,2 DICHLOROETHANE	<0.10	2-NITROPHENOL	<0.36
ARSENIC	0.99	1,1 DICHLOROETHENE	<0.10	4-NITROPHENOL	<0.24
BENZO(A)ANTHRACENE	<0.78	TNS-1,2-DICHLOROETHENE	<0.10	4,6-DINITRO-2-METHYLPHENOL	<0.24
BENZENE	<0.10	DICHLOROBROMOMETHANE	<0.10	N-NITROSODIMETHYLAMINE	<0.21
BENZIDINE	<4.4	2,4 DICHLOROPHENOL	<0.27	N-NITROSODIPHENYLAMINE	<0.19
BENZO(A)PYRENE	<0.25	1,2 DICHLOROPROPANE	<0.10	N-NITROSODIPROPYLAMINE	<3.0
BENZO(B)FLUORANTHENE	<0.48	1,3 DICHLOROPROPENE	<0.10	PCB 1242	<2.2
BENZO(K)FLUORANTHENE	<0.25	DIELDRIN	<0.25	PCB 1254	<3.0
BENZO(G,H,I)PERYLENE	<0.41	2,4 DIMETHYLPHENOL	<0.27	PCB 1221	<1.7
BERYLLIUM	1.05	DIETHYL PHTHALATE	<0.22	PCB 1232	<3.5
BROMOFORM	<0.10	DIMETHYL PHTHALATE	<0.16	PCB 1248	<1.7
BROMOMETHANE	<0.10	2,4 DINITROTOLUENE	<0.57	PCB 1260	<2.5
4-BROMOPHENYL PHENYL ETHER	<0.19	2,6 DINITROTOLUENE	<0.19	PCB 1016	<2.5
CADMIUM	0.52	2,4 DINITROPHENOL	<0.42	PHENOL	<0.15
CARBON TETRACHLORIDE	<0.10	DIOXIN(2,3,7,8-TCDD)	-	PENTACHLOROPHENOL	<0.36
CHLORDANE	<4.69	1,2 DIPHENYLHYDRAZINE	<3.1	PHENANTHRENE	<0.54
CHLOROBENZENE	<0.10	A-ENDOSULFAN	<0.21	BIS-2-ETHYLHEXYL PHTHALATE	<0.25
DIBROMOCHLOROMETHANE	<0.10	B-ENDOSULFAN	<0.42	BUTYL BENZYL PHTHALATE	<0.25
CHLOROETHANE	<0.10	ENDOSULFAN SULFATE	<0.56	DI-N-BUTYL PHTHALATE	5.43
BIS-2CHLOROETHYL ETHER	<0.57	ENDRIN	<0.26	DI-N-OCTYL PHTHALATE	<0.25
BIS-2CHLOROETHOXY METHANE	<0.53	ENDRIN ALDEHYDE	<0.37	PYRENE	<0.19
2-CHLOROETHYL VINYL ETHER	<0.10	ETHYLBENZENE	<0.10	SELENIUM	0.07
4-CHLORO-3-METHYL PHENOL	<0.30	FLUORENE	<0.19	SILVER	<0.73
CHLOROMETHANE	<0.40	FLUORANTHENE	<0.22	1,1,2,2-TETRACHLOROETHENE	<0.10
CHLOROFORM	<0.10	HEPTACHLOR	<0.19	TETRACHLOROETHYLENE	<0.10
2-CHLOROPHENOL	<0.33	HEPTACHLOR EPOXIDE	<0.22	THALLIUM	6.93
BIS-2CHLOROISOPROPYL ETHER	<0.57	HEXACHLOROETHANE	<0.16	TOLUENE	<0.10
2-CHLORONAPHTHALENE	<0.19	HEXACHLOROBENZENE	<0.19	1,2,4 TRICHLOROBENZENE	<0.19
4-CHLOROPHENYL PHENYL ETHER	<0.19	HEXACHLOROBUTADIENE	<0.09	1,1,1 TRICHLOROETHANE	<0.10
CHROMIUM (T)	18.89	LINDANE	<0.15	1,1,2 TRICHLOROETHANE	<0.10
CHRYSENE	<0.25	A-BHC	<0.35	TRICHLOROETHYLENE	<0.10
COPPER	7.92	B-BHC	<0.42	2,4,6-TRICHLOROPHENOL	<0.27
CYANIDE	0.526	D-BHC	<0.31	VINYL CHLORIDE	<0.10
4,4-DDT	<0.47	HEXACHLOROCYCLOPENTADIENE	<0.12	ZINC	38.89
4,4-DDE	<0.56	INDENO(1,2,3-CD)PYRENE	<0.37	TOXAPHENE	<8.7
4,4-DDD	<0.28	ISOPHORONE	<0.22		

KEY: UG/G = PARTS PER MILLION = DETECTED COMPOUND — = NOT TESTED

NEW YORK STATE ENVIRONMENTAL LABORATORY NO. 10667

CHARLES M. SHAPIRO INCORPORATED

ENVIRONMENTAL SERVICES LABORATORY

(516) 291-2300

181 South Franklin Avenue, Suite 305 Valley Stream, N.Y. 11581

FAX: (516) 291-5425

SUMMARY OF PRIORITY POLLUTANT ANALYSES (SOLID MATRIX)

TABLE # 7

SAMPLE NO.: 7 DESCRIPTION: SOIL SAMPLE- THIRD BASE 0-1 INCHES BELOW GRADE

CLIENT: U.S.C.G.S. WILLETS POINT, FORT TOTTEN, N.Y.

JOB NO.: 96-625

CONTAMINANT	CONC. UG/G	CONTAMINANT	CONC. UG/G	CONTAMINANT	CONC. UG/G
ACENAPHTHENE	<0.19	DIBENZO(A,H)ANTHRACENE	<0.25	LEAD	19.42
ACENAPHTHYLENE	<0.35	1,2 DICHLOROBENZENE	<0.10	MERCURY	0.026
ACROLEIN	<0.20	1,3 DICHLOROBENZENE	<0.10	NAPHTHALENE	<0.16
ACRYLONITRILE	<0.22	1,4 DICHLOROBENZENE	<0.10	NICKEL	11.78
ALDRIN	<0.19	3,3 DICHLOROBENZIDINE	<1.65	NITROBENZENE	<0.19
ANTIMONY	35.13	1,1 DICHLOROETHANE	<0.10	METHYLENE CHLORIDE	<0.10
ANTHRACENE	<0.19	1,2 DICHLOROETHANE	<0.10	2-NITROPHENOL	<0.36
ARSENIC	1.12	1,1 DICHLOROETHENE	<0.10	4-NITROPHENOL	<0.24
BENZO(A)ANTHRACENE	<0.78	TNS-1,2-DICHLOROETHENE	<0.10	4,6-DINITRO-2-METHYLPHENOL	<0.24
BENZENE	<0.10	DICHLOROBROMOMETHANE	<0.10	N-NITROSODIMETHYLAMINE	<0.21
BENZIDINE	<4.4	2,4 DICHLOROPHENOL	<0.27	N-NITROSODIPHENYLAMINE	<0.19
BENZO(A)PYRENE	<0.25	1,2 DICHLOROPROPANE	<0.10	N-NITROSODIPROPYLAMINE	<3.0
BENZO(B)FLUORANTHENE	<0.48	1,3 DICHLOROPROPENE	<0.10	PCB 1242	<2.2
BENZO(K)FLUORANTHENE	<0.25	DIELDRIN	<0.25	PCB 1254	<3.0
BENZO(G,H,I)PERYLENE	<0.41	2,4 DIMETHYLPHENOL	<0.27	PCB 1221	<1.7
BERYLLIUM	1.05	DIETHYL PHTHALATE	<0.22	PCB 1232	<3.5
BROMOFORM	<0.10	DIMETHYL PHTHALATE	<0.16	PCB 1248	<1.7
BROMOMETHANE	<0.10	2,4 DINITROTOLUENE	<0.57	PCB 1260	<2.5
4-BROMOPHENYL PHENYL ETHER	<0.19	2,6 DINITROTOLUENE	<0.19	PCB 1016	<2.5
CADMIUM	0.52	2,4 DINITROPHENOL	<0.42	PHENOL	<0.15
CARBON TETRACHLORIDE	<0.10	DIOXIN(2,3,7,8-TCDD)	-	PENTACHLOROPHENOL	<0.36
CHLORDANE	<4.69	1,2 DIPHENYLHYDRAZINE	<3.1	PHENANTHRENE	<0.54
CHLOROBENZENE	<0.10	A-ENDOSULFAN	<0.21	BIS-2ETHYLHEXYL PHTHALATE	<0.25
DIBROMOCHLOROMETHANE	<0.10	B-ENDOSULFAN	<0.42	BUTYL BENZYL PHTHALATE	<0.25
CHLOROETHANE	<0.10	ENDOSULFAN SULFATE	<0.56	DI-N-BUTYL PHTHALATE	4.12
BIS-2CHLOROETHYL ETHER	<0.57	ENDRIN	<0.26	DI-N-OCTYL PHTHALATE	<0.25
BIS-2CHLOROETHOXY METHANE	<0.53	ENDRIN ALDEHYDE	<0.37	PYRENE	<0.19
2-CHLOROETHYL VINYL ETHER	<0.10	ETHYLBENZENE	<0.10	SELENIUM	0.2
4-CHLORO-3-METHYL PHENOL	<0.30	FLUORENE	<0.19	SILVER	<0.73
CHLOROMETHANE	<0.40	FLUORANTHENE	<0.22	1,1,2,2-TETRACHLOROETHENE	<0.10
CHLOROFORM	<0.10	HEPTACHLOR	<0.19	TETRACHLOROETHYLENE	<0.10
2-CHLOROPHENOL	<0.33	HEPTACHLOR EPOXIDE	<0.22	THALLIUM	6.94
BIS-2CHLOROISOPROPYL ETHER	<0.57	HEXACHLOROETHANE	<0.16	TOLUENE	<0.10
2-CHLORONAPHTHALENE	<0.19	HEXACHLOROBENZENE	<0.19	1,2,4 TRICHLOROBENZENE	<0.19
4-CHLOROPHENYL PHENYL ETHER	<0.19	HEXACHLOROBUTADIENE	<0.09	1,1,1 TRICHLOROETHANE	<0.10
CHROMIUM (T)	22.34	LINDANE	<0.15	1,1,2 TRICHLOROETHANE	<0.10
CHRYSENE	<0.25	A-BHC	<0.35	TRICHLOROETHYLENE	<0.10
COPPER	6.92	B-BHC	<0.42	2,4,6-TRICHLOROPHENOL	<0.27
CYANIDE	0.264	D-BHC	<0.31	VINYL CHLORIDE	<0.10
4,4-DDT	<0.47	HEXACHLOROCYCLOPENTADIENE	<0.12	ZINC	36.65
4,4-DDE	<0.56	INDENO(1,2,3-CD)PYRENE	<0.37	TOXAPHENE	<8.7
4,4-DDD	<0.28	ISOPHORONE	<0.22		

KEY: UG/G = PARTS PER MILLION

☐ = DETECTED COMPOUND

☐ = NOT TESTED

NEW YORK STATE ENVIRONMENTAL LABORATORY NO. 10667

CHARLES M. SHAPIRO INCORPORATED

ENVIRONMENTAL SERVICES LABORATORY

(516) 291-2300

181 South Franklin Avenue, Suite 305 Valley Stream, N.Y. 11581

FAX: (516) 291-5425

SUMMARY OF PRIORITY POLLUTANT ANALYSES (SOLID MATRIX)

TABLE # 8

SAMPLE NO.: 8 DESCRIPTION: SOIL SAMPLE- 3 RD BASE 1-3 INCHES BELOW GRADE

CLIENT: U.S.C.G.S. WILLETS POINT, FORT TOTTEN, N.Y.

JOB NO.: 96-625

CONTAMINANT	CONC. UG/G	CONTAMINANT	CONC. UG/G	CONTAMINANT	CONC. UG/G
ACENAPHTHENE	<0.19	DIBENZO(A,H)ANTHRACENE	<0.25	LEAD	78.57
ACENAPHTHYLENE	<0.35	1,2 DICHLOROBENZENE	<0.10	MERCURY	0.074
ACROLEIN	<0.20	1,3 DICHLOROBENZENE	<0.10	NAPHTHALENE	<0.16
ACRYLONITRILE	<0.22	1,4 DICHLOROBENZENE	<0.10	NICKEL	12.054
ALDRIN	<0.19	3,3 DICHLOROBENZIDINE	<1.65	NITROBENZENE	<0.19
ANTIMONY	17.91	1,1 DICHLOROETHANE	<0.10	METHYLENE CHLORIDE	<0.10
ANTHRACENE	<0.19	1,2 DICHLOROETHANE	<0.10	2-NITROPHENOL	<0.36
ARSENIC	1.59	1,1 DICHLOROETHENE	<0.10	4-NITROPHENOL	<0.24
BENZO(A)ANTHRACENE	<0.78	TNS-1,2-DICHLOROETHENE	<0.10	4,6-DINITRO-2-METHYLPHENOL	<0.24
BENZENE	<0.10	DICHLOROBROMOMETHANE	<0.10	N-NITROSODIMETHYLAMINE	<0.21
BENZIDINE	<4.4	2,4 DICHLOROPHENOL	<0.27	N-NITROSODIPHENYLAMINE	<0.19
BENZO(A)PYRENE	<0.25	1,2 DICHLOROPROPANE	<0.10	N-NITROSODIPROPYLAMINE	<3.0
BENZO(B)FLUORANTHENE	<0.48	1,3 DICHLOROPROPENE	<0.10	PCB 1242	<2.2
BENZO(K)FLUORANTHENE	0.32	DIELDRIN	<0.25	PCB 1254	<3.0
BENZO(G,H,I)PERYLENE	<0.41	2,4 DIMETHYLPHENOL	<0.27	PCB 1221	<1.7
BERYLLIUM	1.05	DIETHYL PHTHALATE	<0.22	PCB 1232	<3.5
BROMOFORM	<0.10	DIMETHYL PHTHALATE	<0.16	PCB 1248	<1.7
BROMOMETHANE	<0.10	2,4 DINITROTOLUENE	<0.57	PCB 1260	<2.5
4-BROMOPHENYL PHENYL ETHER	<0.19	2,6 DINITROTOLUENE	<0.19	PCB 1016	<2.5
CADMIUM	0.63	2,4 DINITROPHENOL	<0.42	PHENOL	<0.15
CARBON TETRACHLORIDE	<0.10	DIOXIN(2,3,7,8-TCDD)	-	PENTACHLOROPHENOL	<0.36
CHLORDANE	<4.69	1,2 DIPHENYLHYDRAZINE	<3.1	PHENANTHRENE	<0.54
CHLOROBENZENE	<0.10	A-ENDOSULFAN	<0.21	BIS-2ETHYLHEXYL PHTHALATE	<0.25
DIBROMOCHLOROMETHANE	<0.10	B-ENDOSULFAN	<0.42	BUTYL BENZYL PHTHALATE	<0.25
CHLOROETHANE	<0.10	ENDOSULFAN SULFATE	<0.56	DI-N-BUTYL PHTHALATE	7.99
BIS-2CHLOROETHYL ETHER	<0.57	ENDRIN	<0.26	DI-N-OCTYL PHTHALATE	<0.25
BIS-2CHLOROETHOXY METHANE	<0.53	ENDRIN ALDEHYDE	<0.37	PYRENE	0.25
2-CHLOROETHYL VINYL ETHER	<0.10	ETHYLBENZENE	<0.10	SELENIUM	0.4
4-CHLORO-3-METHYL PHENOL	<0.30	FLUORENE	<0.19	SILVER	<0.73
CHLOROMETHANE	<0.40	FLUORANTHENE	0.26	1,1,2,2-TETRACHLOROETHENE	<0.10
CHLOROFORM	<0.10	HEPTACHLOR	<0.19	TETRACHLOROETHYLENE	<0.10
2-CHLOROPHENOL	<0.33	HEPTACHLOR EPOXIDE	<0.22	THALLIUM	3.41
BIS-2CHLOROISOPROPYL ETHER	<0.57	HEXACHLOROETHANE	<0.16	TOLUENE	<0.10
2-CHLORONAPHTHALENE	<0.19	HEXACHLOROBENZENE	<0.19	1,2,4 TRICHLOROBENZENE	<0.19
4-CHLOROPHENYL PHENYL ETHER	<0.19	HEXACHLOROBUTADIENE	<0.09	1,1,1 TRICHLOROETHANE	<0.10
CHROMIUM (T)	33.56	LINDANE	<0.15	1,1,2 TRICHLOROETHANE	<0.10
CHRYSENE	<0.25	A-BHC	<0.35	TRICHLOROETHYLENE	<0.10
COPPER	13.96	B-BHC	<0.42	2,4,6-TRICHLOROPHENOL	<0.27
CYANIDE	0.701	D-BHC	<0.31	VINYL CHLORIDE	<0.10
1,4-DDT	<0.47	HEXACHLOROCYCLOPENTADIENE	<0.12	ZINC	75.09
4,4-DDE	<0.56	INDENO(1,2,3-CD)PYRENE	<0.37	TOXAPHENE	<8.7
4,4-DDD	<0.28	ISOPHORONE	<0.22		

KEY: UG/G = PARTS PER MILLION

= DETECTED COMPOUND

--

= NOT TESTED

NEW YORK STATE ENVIRONMENTAL LABORATORY NO. 10667

CHARLES M. SHAPIRO INCORPORATED

ENVIRONMENTAL SERVICES LABORATORY

(516) 291-2300

181 South Franklin Avenue, Suite 305 Valley Stream, N.Y. 11581

FAX: (516) 291-5425

SUMMARY OF PRIORITY POLLUTANT ANALYSES (SOLID MATRIX)

TABLE # 9

SAMPLE NO.: 9 DESCRIPTION: SOIL SAMPLE- 3 RD BASE 3-6 INCHES BELOW GRADE

CLIENT: U.S.C.G.S. WILLETS POINT, FORT TOTTEN, N.Y.

JOB NO.: 96-625

CONTAMINANT	CONC. UG/G	CONTAMINANT	CONC. UG/G	CONTAMINANT	CONC. UG/G
ACENAPHTHENE	<0.19	DIBENZO(A,H)ANTHRACENE	<0.25	LEAD	108.15
ACENAPHTHYLENE	<0.35	1,2 DICHLOROBENZENE	<0.10	MERCURY	0.064
ACROLEIN	<0.20	1,3 DICHLOROBENZENE	<0.10	NAPHTHALENE	<0.16
ACRYLONITRILE	<0.22	1,4 DICHLOROBENZENE	<0.10	NICKEL	12.15
ALDRIN	<0.19	3,3 DICHLOROBENZIDINE	<1.65	NITROBENZENE	<0.19
ANTIMONY	4.94	1,1 DICHLOROETHANE	<0.10	METHYLENE CHLORIDE	<0.10
ANTHRACENE	<0.19	1,2 DICHLOROETHANE	<0.10	2-NITROPHENOL	<0.36
ARSENIC	1.66	1,1 DICHLOROETHENE	<0.10	4-NITROPHENOL	<0.24
BENZO(A)ANTHRACENE	<0.78	TNS-1,2-DICHLOROETHENE	<0.10	4,6-DINITRO-2-METHYLPHENOL	<0.24
BENZENE	<0.10	DICHLOROBROMOMETHANE	<0.10	N-NITROSODIMETHYLAMINE	<0.21
BENZIDINE	<4.4	2,4 DICHLOROPHENOL	<0.27	N-NITROSODIPHENYLAMINE	<0.19
BENZO(A)PYRENE	<0.25	1,2 DICHLOROPROPANE	<0.10	N-NITROSODIPROPYLAMINE	<3.0
BENZO(B)FLUORANTHENE	<0.48	1,3 DICHLOROPROPENE	<0.10	PCB 1242	<2.2
BENZO(K)FLUORANTHENE	<0.25	DIELDRIN	<0.25	PCB 1254	<3.0
BENZO(G,H,I)PERYLENE	<0.41	2,4 DIMETHYLPHENOL	<0.27	PCB 1221	<1.7
BERYLLIUM	1.05	DIETHYL PHTHALATE	<0.22	PCB 1232	<3.5
BROMOFORM	<0.10	DIMETHYL PHTHALATE	<0.16	PCB 1248	<1.7
BROMOMETHANE	<0.10	2,4 DINITROTOLUENE	<0.57	PCB 1260	<2.5
4-BROMOPHENYL PHENYL ETHER	<0.19	2,6 DINITROTOLUENE	<0.19	PCB 1016	<2.5
CADMIUM	0.52	2,4 DINITROPHENOL	<0.42	PHENOL	<0.15
CARBON TETRACHLORIDE	<0.10	DIOXIN(2,3,7,8-TCDD)	-	PENTACHLOROPHENOL	<0.36
CHLORDANE	<4.69	1,2 DIPHENYLHYDRAZINE	<3.1	PHENANTHRENE	<0.54
CHLOROBENZENE	<0.10	A-ENDOSULFAN	<0.21	BIS-2ETHYLHEXYL PHTHALATE	<0.25
DIBROMOCHLOROMETHANE	<0.10	B-ENDOSULFAN	<0.42	BUTYL BENZYL PHTHALATE	<0.25
CHLOROETHANE	<0.10	ENDOSULFAN SULFATE	<0.56	DI-N-BUTYL PHTHALATE	5.21
BIS-2CHLOROETHYL ETHER	<0.57	ENDRIN	<0.26	DI-N-OCTYL PHTHALATE	<0.25
BIS-2CHLOROETHOXY METHANE	<0.53	ENDRIN ALDEHYDE	<0.37	PYRENE	<0.19
2-CHLOROETHYL VINYL ETHER	<0.10	ETHYLBENZENE	<0.10	SELENIUM	0.07
4-CHLORO-3-METHYL PHENOL	<0.30	FLUORENE	<0.19	SILVER	<0.73
CHLOROMETHANE	<0.40	FLUORANTHENE	<0.22	1,1,2,2-TETRACHLOROETHENE	<0.10
CHLOROFORM	<0.10	HEPTACHLOR	<0.19	TETRACHLOROETHYLENE	<0.10
2-CHLOROPHENOL	<0.33	HEPTACHLOR EPOXIDE	<0.22	THALLIUM	6.93
BIS-2CHLOROISOPROPYL ETHER	<0.57	HEXACHLOROETHANE	<0.16	TOLUENE	<0.10
2-CHLORONAPHTHALENE	<0.19	HEXACHLOROBENZENE	<0.19	1,2,4 TRICHLOROBENZENE	<0.19
4-CHLOROPHENYL PHENYL ETHER	<0.19	HEXACHLOROBUTADIENE	<0.09	1,1,1 TRICHLOROETHANE	<0.10
CHROMIUM (T)	27.17	LINDANE	<0.15	1,1,2 TRICHLOROETHANE	<0.10
CHRYSENE	<0.25	A-BHC	<0.35	TRICHLOROETHYLENE	<0.10
COPPER	16.45	B-BHC	<0.42	2,4,6-TRICHLOROPHENOL	<0.27
CYANIDE	0.176	D-BHC	<0.31	VINYL CHLORIDE	<0.10
4,4-DDT	<0.47	HEXACHLOROCYCLOPENTADIENE	<0.12	ZINC	77.6
4,4-DDE	<0.56	INDENO(1,2,3-CD)PYRENE	<0.37	TOXAPHENE	<8.7
4,4-DDD	<0.28	ISOPHORONE	<0.22		

KEY: UG/G = PARTS PER MILLION ☐ = DETECTED COMPOUND ☐ = NOT TESTED

NEW YORK STATE ENVIRONMENTAL LABORATORY NO. 10667

CHARLES M. SHAPIRO INCORPORATED

ENVIRONMENTAL SERVICES LABORATORY

(516) 291-2300

181 South Franklin Avenue, Suite 305 Valley Stream, N.Y. 11581

FAX: (516) 291-5425

SUMMARY OF PRIORITY POLLUTANT ANALYSES (SOLID MATRIX)

TABLE # 10

SAMPLE NO.: 10 DESCRIPTION: SOIL SAMPLE- HOME PLATE 0-1 INCH BELOW GRADE

CLIENT: U.S.C.G.S. WILLETS POINT, FORT TOTTEN, N.Y.

JOB NO.: 96-625

CONTAMINANT	CONC. UG/G	CONTAMINANT	CONC. UG/G	CONTAMINANT	CONC. UG/G
ACENAPHTHENE	<0.19	DIBENZO(A,H)ANTHRACENE	<0.25	LEAD	10.19
ACENAPHTHYLENE	<0.35	1,2 DICHLOROBENZENE	<0.10	MERCURY	0.016
ACROLEIN	<0.20	1,3 DICHLOROBENZENE	<0.10	NAPHTHALENE	<0.16
ACRYLONITRILE	<0.22	1,4 DICHLOROBENZENE	<0.10	NICKEL	11.77
ALDRIN	<0.19	3,3 DICHLOROBENZIDINE	<1.65	NITROBENZENE	<0.19
ANTIMONY	13.57	1,1 DICHLOROETHANE	<0.10	METHYLENE CHLORIDE	<0.10
ANTHRACENE	<0.19	1,2 DICHLOROETHANE	<0.10	2-NITROPHENOL	<0.36
ARSENIC	1.58	1,1 DICHLOROETHENE	<0.10	4-NITROPHENOL	<0.24
BENZO(A)ANTHRACENE	<0.78	TNS-1,2-DICHLOROETHENE	<0.10	4,6-DINITRO-2-METHYLPHENOL	<0.24
BENZENE	<0.10	DICHLOROBROMOMETHANE	<0.10	N-NITROSODIMETHYLAMINE	<0.21
BENZIDINE	<4.4	2,4 DICHLOROPHENOL	<0.27	N-NITROSODIPHENYLAMINE	<0.19
BENZO(A)PYRENE	<0.25	1,2 DICHLOROPROPANE	<0.10	N-NITROSODIPROPYLAMINE	<3.0
BENZO(B)FLUORANTHENE	<0.48	1,3 DICHLOROPROPENE	<0.10	PCB 1242	<2.2
BENZO(K)FLUORANTHENE	<0.25	DIELDRIN	<0.25	PCB 1254	<3.0
BENZO(G,H,I)PERYLENE	<0.41	2,4 DIMETHYLPHENOL	<0.27	PCB 1221	<1.7
BERYLLIUM	1.22	DIETHYL PHTHALATE	<0.22	PCB 1232	<3.5
BROMOFORM	<0.10	DIMETHYL PHTHALATE	<0.16	PCB 1248	<1.7
BROMOMETHANE	<0.10	2,4 DINITROTOLUENE	<0.57	PCB 1260	<2.5
4-BROMOPHENYL PHENYL ETHER	<0.19	2,6 DINITROTOLUENE	<0.19	PCB 1016	<2.5
CADMIUM	0.41	2,4 DINITROPHENOL	<0.42	PHENOL	<0.15
CARBON TETRACHLORIDE	<0.10	DIOXIN(2,3,7,8-TCDD)	-	PENTACHLOROPHENOL	<0.36
CHLORDANE	<4.69	1,2 DIPHENYLHYDRAZINE	<3.1	PHENANTHRENE	<0.54
CHLOROBENZENE	<0.10	A-ENDOSULFAN	<0.21	BIS-2ETHYLHEXYL PHTHALATE	<0.25
DIBROMOCHLOROMETHANE	<0.10	B-ENDOSULFAN	<0.42	BUTYL BENZYL PHTHALATE	<0.25
CHLOROETHANE	<0.10	ENDOSULFAN SULFATE	<0.56	DI-N-BUTYL PHTHALATE	6.99
BIS-2CHLOROETHYL ETHER	<0.57	ENDRIN	<0.26	DI-N-OCTYL PHTHALATE	<0.25
BIS-2CHLOROETHOXY METHANE	<0.53	ENDRIN ALDEHYDE	<0.37	PYRENE	<0.19
2-CHLOROETHYL VINYL ETHER	<0.10	ETHYLBENZENE	<0.10	SELENIUM	0.53
4-CHLORO-3-METHYL PHENOL	<0.30	FLUORENE	<0.19	SILVER	0.73
CHLOROMETHANE	<0.40	FLUORANTHENE	<0.22	1,1,2,2-TETRACHLOROETHENE	<0.10
CHLOROFORM	<0.10	HEPTACHLOR	<0.19	TETRACHLOROETHYLENE	<0.10
2-CHLOROPHENOL	<0.33	HEPTACHLOR EPOXIDE	<0.22	THALLIUM	6.93
BIS-2CHLOROISOPROPYL ETHER	<0.57	HEXACHLOROETHANE	<0.16	TOLUENE	<0.10
2-CHLORONAPHTHALENE	<0.19	HEXACHLORO BENZENE	<0.19	1,2,4 TRICHLORO BENZENE	<0.19
4-CHLOROPHENYL PHENYL ETHER	<0.19	HEXACHLOROBUTADIENE	<0.09	1,1,1 TRICHLOROETHANE	<0.10
CHROMIUM (T)	25.09	LINDANE	<0.15	1,1,2 TRICHLOROETHANE	<0.10
CHRYSENE	<0.25	A-BHC	<0.35	TRICHLOROETHYLENE	<0.10
COPPER	6.41	B-BHC	<0.42	2,4,6-TRICHLOROPHENOL	<0.27
CYANIDE	0.264	D-BHC	<0.31	VINYL CHLORIDE	<0.10
4,4-DDT	<0.47	HEXACHLOROCYCLOPENTADIENE	<0.12	ZINC	43.41
4,4-DDE	<0.56	INDENO(1,2,3-CD)PYRENE	<0.37	TOXAPHENE	<8.7
4,4-DDD	<0.28	ISOPHORONE	<0.22		

KEY: UG/G = PARTS PER MILLION

☐ = DETECTED COMPOUND

— = NOT TESTED

NEW YORK STATE ENVIRONMENTAL LABORATORY NO. 10667

CHARLES M. SHAPIRO INCORPORATED

ENVIRONMENTAL SERVICES LABORATORY

(516) 291-2300

181 South Franklin Avenue, Suite 305 Valley Stream, N.Y. 11581

FAX: (516) 291-5425

SUMMARY OF PRIORITY POLLUTANT ANALYSES (SOLID MATRIX)

TABLE # 11 - A

SAMPLE NO.: 11 DESCRIPTION: SOIL SAMPLE- HOME PLATE 1-3 INCHES BELOW GRADE

CLIENT: U.S.C.G.S. WILLETS POINT, FORT TOTTEN, N.Y.

JOB NO.: 96-625

CONTAMINANT	CONC. UG/G	CONTAMINANT	CONC. UG/G	CONTAMINANT	CONC. UG/G
ACENAPHTHENE	<0.19	DIBENZO(A,H)ANTHRACENE	<0.25	LEAD	7.1
ACENAPHTHYLENE	<0.35	1,2 DICHLOROBENZENE	<0.10	MERCURY	0.016
ACROLEIN	<0.20	1,3 DICHLOROBENZENE	<0.10	NAPHTHALENE	<0.16
ACRYLONITRILE	<0.22	1,4 DICHLOROBENZENE	<0.10	NICKEL	24.1
ALDRIN	<0.19	3,3 DICHLOROBENZIDINE	<1.65	NITROBENZENE	<0.19
ANTIMONY	9.24	1,1 DICHLOROETHANE	<0.10	METHYLENE CHLORIDE	<0.10
ANTHRACENE	<0.19	1,2 DICHLOROETHANE	<0.10	2-NITROPHENOL	<0.36
ARSENIC	1.8	1,1 DICHLOROETHENE	<0.10	4-NITROPHENOL	<0.24
BENZO(A)ANTHRACENE	<0.78	TNS-1,2-DICHLOROETHENE	<0.10	4,6-DINITRO-2-METHYLPHENOL	<0.24
BENZENE	<0.10	DICHLOROBROMOMETHANE	<0.10	N-NITROSODIMETHYLAMINE	<0.21
BENZIDINE	<4.4	2,4 DICHLOROPHENOL	<0.27	N-NITROSODIPHENYLAMINE	<0.19
BENZO(A)PYRENE	<0.25	1,2 DICHLOROPROPANE	<0.10	N-NITROSODIPROPYLAMINE	<3.0
BENZO(B)FLUORANTHENE	<0.48	1,3 DICHLOROPROPENE	<0.10	PCB 1242	<2.2
BENZO(K)FLUORANTHENE	<0.25	DIELDRIN	<0.25	PCB 1254	<3.0
BENZO(G,H,I)PERYLENE	<0.41	2,4 DIMETHYLPHENOL	<0.27	PCB 1221	<1.7
BERYLLIUM	1.05	DIETHYL PHTHALATE	<0.22	PCB 1232	<3.5
BROMOFORM	<0.10	DIMETHYL PHTHALATE	<0.16	PCB 1248	<1.7
BROMOMETHANE	<0.10	2,4 DINITROTOLUENE	<0.57	PCB 1260	<2.5
4-BROMOPHENYL PHENYL ETHER	<0.19	2,6 DINITROTOLUENE	<0.19	PCB 1016	<2.5
CADMIUM	0.41	2,4 DINITROPHENOL	<0.42	PHENOL	<0.15
CARBON TETRACHLORIDE	<0.10	DIOXIN(2,3,7,8-TCDD)	-	PENTACHLOROPHENOL	<0.36
CHLORDANE	<4.69	1,2 DIPHENYLHYDRAZINE	<3.1	PHENANTHRENE	<0.54
CHLOROBENZENE	<0.10	A-ENDOSULFAN	<0.21	BIS-2ETHYLHEXYL PHTHALATE	0.30
DIBROMOCHLOROMETHANE	<0.10	B-ENDOSULFAN	<0.42	BUTYL BENZYL PHTHALATE	<0.25
CHLOROETHANE	<0.10	ENDOSULFAN SULFATE	<0.56	DI-N-BUTYL PHTHALATE	6.74
BIS-2CHLOROETHYL ETHER	<0.57	ENDRIN	<0.26	DI-N-OCTYL PHTHALATE	<0.25
BIS-2CHLOROETHOXY METHANE	<0.53	ENDRIN ALDEHYDE	<0.37	PYRENE	<0.19
2-CHLOROETHYL VINYL ETHER	<0.10	ETHYLBENZENE	<0.10	SELENIUM	0.86
4-CHLORO-3-METHYL PHENOL	<0.30	FLUORENE	<0.19	SILVER	<0.73
CHLOROMETHANE	<0.40	FLUORANTHENE	<0.22	1,1,2,2-TETRACHLOROETHENE	<0.10
CHLOROFORM	<0.10	HEPTACHLOR	<0.19	TETRACHLOROETHYLENE	<0.10
2-CHLOROPHENOL	<0.33	HEPTACHLOR EPOXIDE	<0.22	THALLIUM	6.92
BIS-2CHLOROISOPROPYL ETHER	<0.57	HEXACHLOROETHANE	<0.16	TOLUENE	<0.10
2-CHLORONAPHTHALENE	<0.19	HEXACHLOROBENZENE	<0.19	1,2,4 TRICHLOROBENZENE	<0.19
4-CHLOROPHENYL PHENYL ETHER	<0.19	HEXACHLOROBUTADIENE	<0.09	1,1,1 TRICHLOROETHANE	<0.10
CHROMIUM (T)	19.54	LINDANE	<0.15	1,1,2 TRICHLOROETHANE	<0.10
CHRYSENE	<0.25	A-BHC	<0.35	TRICHLOROETHYLENE	<0.10
COPPER	13.92	B-BHC	<0.42	2,4,6-TRICHLOROPHENOL	<0.27
CYANIDE	0.176	D-BHC	<0.31	VINYL CHLORIDE	<0.10
4-DDT	<0.47	HEXACHLOROCYCLOPENTADIENE	<0.12	ZINC	55.15
DDE	<0.56	INDENO(1,2,3-CD)PYRENE	<0.37	TOXAPHENE	<8.7
4,4-DDD	<0.28	ISOPHORONE	<0.22		

KEY: UG/G = PARTS PER MILLION

— = DETECTED COMPOUND

— = NOT TESTED

NEW YORK STATE ENVIRONMENTAL LABORATORY NO. 10667

CHARLES M. SHAPIRO INCORPORATED

ENVIRONMENTAL SERVICES LABORATORY

(516) 291-2300

181 South Franklin Avenue, Suite 305 Valley Stream, N.Y. 11581

FAX: (516) 291-5425

SUMMARY OF PRIORITY POLLUTANT ANALYSES (SOLID MATRIX)

TABLE # 11 - B

SAMPLE NO.: 11 (DUP) DESCRIPTION: SOIL SAMPLE- HOME PLATE 1-3 INCHES BELOW GRADE

CLIENT: U.S.C.G.S. WILLETS POINT, FORT TOTTEN, N.Y.

JOB NO.: 96-625

CONTAMINANT	CONC. UG/G	CONTAMINANT	CONC. UG/G	CONTAMINANT	CONC. UG/G
ACENAPHTHENE	<0.19	DIBENZO(A,H)ANTHRACENE	<0.25	LEAD	11.73
ACENAPHTHYLENE	<0.35	1,2 DICHLOROBENZENE	<0.10	MERCURY	0.0449
ACROLEIN	<0.20	1,3 DICHLOROBENZENE	<0.10	NAPHTHALENE	<0.16
ACRYLONITRILE	<0.22	1,4 DICHLOROBENZENE	<0.10	NICKEL	10.65
ALDRIN	<0.19	3,3 DICHLOROBENZIDINE	<1.65	NITROBENZENE	<0.19
ANTIMONY	17.891	1,1 DICHLOROETHANE	<0.10	METHYLENE CHLORIDE	<0.10
ANTHRACENE	<0.19	1,2 DICHLOROETHANE	<0.10	2-NITROPHENOL	<0.36
ARSENIC	1.91	1,1 DICHLOROETHENE	<0.10	4-NITROPHENOL	<0.24
BENZO(A)ANTHRACENE	<0.78	TNS-1,2-DICHLOROETHENE	<0.10	4,6-DINITRO-2-METHYLPHENOL	<0.24
BENZENE	<0.10	DICHLOROBROMOMETHANE	<0.10	N-NITROSODIMETHYLAMINE	<0.21
BENZIDINE	<4.4	2,4 DICHLOROPHENOL	<0.27	N-NITROSODIPHENYLAMINE	<0.19
BENZO(A)PYRENE	<0.25	1,2 DICHLOROPROPANE	<0.10	N-NITROSODIPROPYLAMINE	<3.0
BENZO(B)FLUORANTHENE	<0.48	1,3 DICHLOROPROPENE	<0.10	PCB 1242	<2.2
BENZO(K)FLUORANTHENE	<0.25	DIELDRIN	<0.25	PCB 1254	<3.0
BENZO(G,H,I)PERYLENE	<0.41	2,4 DIMETHYLPHENOL	<0.27	PCB 1221	<1.7
BERYLLIUM	1.05	DIETHYL PHTHALATE	<0.22	PCB 1232	<3.5
BROMOFORM	<0.10	DIMETHYL PHTHALATE	<0.16	PCB 1248	<1.7
BROMOMETHANE	<0.10	2,4 DINITROTOLUENE	<0.57	PCB 1260	<2.5
4-BROMOPHENYL PHENYL ETHER	<0.19	2,6 DINITROTOLUENE	<0.19	PCB 1016	<2.5
CADMIUM	0.41	2,4 DINITROPHENOL	<0.42	PHENOL	<0.15
CARBON TETRACHLORIDE	<0.10	DIOXIN(2,3,7,8-TCDD)	-	PENTACHLOROPHENOL	<0.36
CHLORDANE	<4.69	1,2 DIPHENYLHYDRAZINE	<3.1	PHENANTHRENE	<0.54
CHLOROBENZENE	<0.10	A-ENDOSULFAN	<0.21	BIS-2ETHYLHEXYL PHTHALATE	<0.25
DIBROMOCHLOROMETHANE	<0.10	B-ENDOSULFAN	<0.42	BUTYL BENZYL PHTHALATE	<0.25
CHLOROETHANE	<0.10	ENDOSULFAN SULFATE	<0.56	DI-N-BUTYL PHTHALATE	15.02
BIS-2CHLOROETHYL ETHER	<0.57	ENDRIN	<0.26	DI-N-OCTYL PHTHALATE	<0.25
BIS-2CHLOROETHOXY METHANE	<0.53	ENDRIN ALDEHYDE	<0.37	PYRENE	<0.19
2-CHLOROETHYL VINYL ETHER	<0.10	ETHYLBENZENE	<0.10	SELENIUM	0.33
4-CHLORO-3-METHYL PHENOL	<0.30	FLUORENE	<0.19	SILVER	0.73
CHLOROMETHANE	<0.40	FLUORANTHENE	<0.22	1,1,2,2-TETRACHLOROETHENE	<0.10
CHLOROFORM	<0.10	HEPTACHLOR	<0.19	TETRACHLOROETHYLENE	<0.10
2-CHLOROPHENOL	<0.33	HEPTACHLOR EPOXIDE	<0.22	THALLIUM	6.93
BIS-2CHLOROISOPROPYL ETHER	<0.57	HEXACHLOROETHANE	<0.16	TOLUENE	<0.10
2-CHLORONAPHTHALENE	<0.19	HEXACHLOROBENZENE	<0.19	1,2,4 TRICHLOROBENZENE	<0.19
4-CHLOROPHENYL PHENYL ETHER	<0.19	HEXACHLOROBUTADIENE	<0.09	1,1,1 TRICHLOROETHANE	<0.10
CHROMIUM	21.64	LINDANE	<0.15	1,1,2 TRICHLOROETHANE	<0.10
CHRYSENE	<0.25	A-BHC	<0.35	TRICHLOROETHYLENE	<0.10
COPPER	6.91	B-BHC	<0.42	2,4,6-TRICHLOROPHENOL	<0.27
CYANIDE	0.176	D-BHC	<0.31	VINYL CHLORIDE	<0.10
4,4-DDT	<0.47	HEXACHLOROCYCLOPENTADIENE	<0.12	ZINC	40.79
4,4-DDE	<0.56	INDENO(1,2,3-CD)PYRENE	<0.37	TOXAPHENE	<8.7
4,4-DDD	<0.28	ISOPHORONE	<0.22		

KEY: UG/G = PARTS PER MILLION

= DETECTED COMPOUND

— = NOT TESTED

NEW YORK STATE ENVIRONMENTAL LABORATORY NO. 10667

CHARLES M. SHAPIRO INCORPORATED

ENVIRONMENTAL SERVICES LABORATORY

(516) 291-2300

181 South Franklin Avenue, Suite 305 Valley Stream, N.Y. 11581

FAX: (516) 291-5425

SUMMARY OF PRIORITY POLLUTANT ANALYSES (SOLID MATRIX)

TABLE # 12

SAMPLE NO.: 12 DESCRIPTION: SOIL SAMPLE- HOME PLATE 3-6 INCHES BELOW GRADE

CLIENT: U.S.C.G.S. WILLETS POINT, FORT TOTTEN, N.Y.

JOB NO.: 96-625

CONTAMINANT	CONC. UG/G	CONTAMINANT	CONC. UG/G	CONTAMINANT	CONC. UG/G
ACENAPHTHENE	<0.19	DIBENZO(A,H)ANTHRACENE	<0.25	LEAD	10.18
ACENAPHTHYLENE	<0.35	1,2 DICHLOROBENZENE	<0.10	MERCURY	0.016
ACROLEIN	<0.20	1,3 DICHLOROBENZENE	<0.10	NAPHTHALENE	<0.16
ACRYLONITRILE	<0.22	1,4 DICHLOROBENZENE	<0.10	NICKEL	10.27
ALDRIN	<0.19	3,3 DICHLOROBENZIDINE	<1.65	NITROBENZENE	<0.19
ANTIMONY	9.26	1,1 DICHLOROETHANE	<0.10	METHYLENE CHLORIDE	<0.10
ANTHRACENE	0.31	1,2 DICHLOROETHANE	<0.10	2-NITROPHENOL	<0.36
ARSENIC	4.08	1,1 DICHLOROETHENE	<0.10	4-NITROPHENOL	<0.24
BENZO(A)ANTHRACENE	<0.78	TNS-1,2-DICHLOROETHENE	<0.10	4,6-DINITRO-2-METHYLPHENOL	<0.24
BENZENE	<0.10	DICHLOROBROMOMETHANE	<0.10	N-NITROSODIMETHYLAMINE	<0.21
BENZIDINE	<4.4	2,4 DICHLOROPHENOL	<0.27	N-NITROSODIPHENYLAMINE	<0.19
BENZO(A)PYRENE	0.70	1,2 DICHLOROPROPANE	<0.10	N-NITROSODIPROPYLAMINE	<3.0
BENZO(B)FLUORANTHENE	<0.48	1,3 DICHLOROPROPENE	<0.10	PCB 1242	<2.2
BENZO(K)FLUORANTHENE	0.72	DIELDRIN	<0.25	PCB 1254	<3.0
BENZO(G,H,I)PERYLENE	<0.41	2,4 DIMETHYLPHENOL	<0.27	PCB 1221	<1.7
BERYLLIUM	1.05	DIETHYL PHTHALATE	<0.22	PCB 1232	<3.5
BROMOFORM	<0.10	DIMETHYL PHTHALATE	<0.16	PCB 1248	<1.7
BROMOMETHANE	<0.10	2,4 DINITROTOLUENE	<0.57	PCB 1260	<2.5
4-BROMOPHENYL PHENYL ETHER	<0.19	2,6 DINITROTOLUENE	<0.19	PCB 1016	<2.5
CADMIUM	0.41	2,4 DINITROPHENOL	<0.42	PHENOL	<0.15
CARBON TETRACHLORIDE	<0.10	DIOXIN(2,3,7,8-TCDD)	-	PENTACHLOROPHENOL	<0.36
CHLORDANE	<4.69	1,2 DIPHENYLHYDRAZINE	<3.1	PHENANTHRENE	<0.54
CHLOROBENZENE	<0.10	A-ENDOSULFAN	<0.21	BIS-2ETHYLHEXYL PHTHALATE	6.42
DIBROMOCHLOROMETHANE	<0.10	B-ENDOSULFAN	<0.42	BUTYL BENZYL PHTHALATE	1.57
CHLOROETHANE	<0.10	ENDOSULFAN SULFATE	<0.56	DI-N-BUTYL PHTHALATE	73.93
BIS-2CHLOROETHYL ETHER	<0.57	ENDRIN	<0.26	DI-N-OCTYL PHTHALATE	<0.25
BIS-2CHLOROETHOXY METHANE	<0.53	ENDRIN ALDEHYDE	<0.37	PYRENE	0.25
2-CHLOROETHYL VINYL ETHER	<0.10	ETHYLBENZENE	<0.10	SELENIUM	0.330
4-CHLORO-3-METHYL PHENOL	<0.30	FLUORENE	<0.19	SILVER	<0.73
CHLOROMETHANE	<0.40	FLUORANTHENE	<0.22	1,1,2,2-TETRACHLOROETHENE	<0.10
CHLOROFORM	<0.10	HEPTACHLOR	<0.19	TETRACHLOROETHYLENE	<0.10
2-CHLOROPHENOL	<0.33	HEPTACHLOR EPOXIDE	<0.22	THALLIUM	6.93
BIS-2CHLOROISOPROPYL ETHER	<0.57	HEXACHLOROETHANE	0.40	TOLUENE	<0.10
2-CHLORONAPHTHALENE	0.28	HEXACHLOROBENZENE	<0.19	1,2,4 TRICHLOROBENZENE	<0.19
4-CHLOROPHENYL PHENYL ETHER	<0.19	HEXACHLOROBUTADIENE	<0.09	1,1,1 TRICHLOROETHANE	<0.10
CHROMIUM (T)	16.84	LINDANE	<0.15	1,1,2 TRICHLOROETHANE	<0.10
CHRYSENE	0.53	A-BHC	<0.35	TRICHLOROETHYLENE	<0.10
COPPER	2.88	B-BHC	<0.42	2,4,6-TRICHLOROPHENOL	<0.27
CYANIDE	0.176	D-BHC	<0.31	VINYL CHLORIDE	<0.10
4,4-DDT	<0.47	HEXACHLOROCYCLOPENTADIENE	<0.12	ZINC	36.82
4,4-DDE	<0.56	INDENO(1,2,3-CD)PYRENE	<0.37	TOXAPHENE	<8.7
4,4-DDD	<0.28	ISOPHORONE	<0.22		

KEY: UG/G = PARTS PER MILLION

☐ = DETECTED COMPOUND

— = NOT TESTED

NEW YORK STATE ENVIRONMENTAL LABORATORY NO. 10667

CHARLES M. SHAPIRO INCORPORATED

ENVIRONMENTAL SERVICES LABORATORY

(516) 291-2300

181 South Franklin Avenue, Suite 305 Valley Stream, N.Y. 11581

FAX: (516) 291-5425

SUMMARY OF PRIORITY POLLUTANT ANALYSES (SOLID MATRIX)

TABLE # 13

SAMPLE NO.: 13 DESCRIPTION: SOIL SAMPLE- PITCHERS MOUND 0-1 INCH BELOW GRADE

CLIENT: U.S.C.G.S. WILLETS POINT, FORT TOTTEN, N.Y.

JOB NO.: 96-625

CONTAMINANT	CONC. UG/G	CONTAMINANT	CONC. UG/G	CONTAMINANT	CONC. UG/G
ACENAPHTHENE	<0.19	DIBENZO(A,H)ANTHRACENE	<0.25	LEAD	13.26
ACENAPHTHYLENE	<0.35	1,2 DICHLOROBENZENE	<0.10	MERCURY	0.026
ACROLEIN	<0.20	1,3 DICHLOROBENZENE	<0.10	NAPHTHALENE	<0.16
ACRYLONITRILE	<0.22	1,4 DICHLOROBENZENE	<0.10	NICKEL	11.39
ALDRIN	<0.19	3,3 DICHLOROBENZIDINE	<1.65	NITROBENZENE	<0.19
ANTIMONY	9.25	1,1 DICHLOROETHANE	<0.10	METHYLENE CHLORIDE	<0.10
ANTHRACENE	0.22	1,2 DICHLOROETHANE	<0.10	2-NITROPHENOL	<0.36
ARSENIC	1.71	1,1 DICHLOROETHENE	<0.10	4-NITROPHENOL	<0.24
BENZO(A)ANTHRACENE	<0.78	TNS-1,2-DICHLOROETHENE	<0.10	4,6-DINITRO-2-METHYLPHENOL	<0.24
BENZENE	<0.10	DICHLOROBROMOMETHANE	<0.10	N-NITROSODIMETHYLAMINE	<0.21
BENZIDINE	<4.4	2,4 DICHLOROPHENOL	<0.27	N-NITROSODIPHENYLAMINE	1.49
BENZO(A)PYRENE	<0.25	1,2 DICHLOROPROPANE	<0.10	N-NITROSODIPROPYLAMINE	<3.0
BENZO(B)FLUORANTHENE	<0.48	1,3 DICHLOROPROPENE	<0.10	PCB 1242	<2.2
BENZO(K)FLUORANTHENE	<0.25	DIELDRIN	<0.25	PCB 1254	<3.0
BENZO(G,H,I)PERYLENE	<0.41	2,4 DIMETHYLPHENOL	<0.27	PCB 1221	<1.7
BERYLLIUM	1.22	DIETHYL PHTHALATE	2.00	PCB 1232	<3.5
BROMOFORM	<0.10	DIMETHYL PHTHALATE	0.64	PCB 1248	<1.7
BROMOMETHANE	<0.10	2,4 DINITROTOLUENE	<0.57	PCB 1260	<2.5
4-BROMOPHENYL PHENYL ETHER	<0.19	2,6 DINITROTOLUENE	<0.19	PCB 1016	<2.5
CADMIUM	0.52	2,4 DINITROPHENOL	<0.42	PHENOL	<0.15
CARBON TETRACHLORIDE	<0.10	DIOXIN(2,3,7,8-TCDD)	-	PENTACHLOROPHENOL	<0.36
CHLORDANE	<4.69	1,2 DIPHENYLHYDRAZINE	<3.1	PHENANTHRENE	<0.54
CHLOROBENZENE	<0.10	A-ENDOSULFAN	<0.21	BIS-2ETHYLHEXYL PHTHALATE	3.80
DIBROMOCHLOROMETHANE	<0.10	B-ENDOSULFAN	<0.42	BUTYL BENZYL PHTHALATE	1.00
CHLOROETHANE	<0.10	ENDOSULFAN SULFATE	<0.56	DI-N-BUTYL PHTHALATE	48.80
BIS-2CHLOROETHYL ETHER	<0.57	ENDRIN	<0.26	DI-N-OCTYL PHTHALATE	<0.25
BIS-2CHLOROETHOXY METHANE	<0.53	ENDRIN ALDEHYDE	<0.37	PYRENE	<0.19
2-CHLOROETHYL VINYL ETHER	<0.10	ETHYLBENZENE	<0.10	SELENIUM	0.87
4-CHLORO-3-METHYL PHENOL	<0.30	FLUORENE	<0.19	SILVER	0.73
CHLOROMETHANE	<0.40	FLUORANTHENE	<0.22	1,1,2,2-TETRACHLOROETHENE	<0.10
CHLOROFORM	<0.10	HEPTACHLOR	<0.19	TETRACHLOROETHYLENE	<0.10
2-CHLOROPHENOL	<0.33	HEPTACHLOR EPOXIDE	<0.22	THALLIUM	6.93
BIS-2CHLOROISOPROPYL ETHER	<0.57	HEXACHLOROETHANE	<0.16	TOLUENE	<0.10
2-CHLORONAPHTHALENE	<0.19	HEXACHLOROBENZENE	<0.19	1,2,4 TRICHLOROBENZENE	<0.19
4-CHLOROPHENYL PHENYL ETHER	<0.19	HEXACHLOROBUTADIENE	<0.09	1,1,1 TRICHLOROETHANE	<0.10
CHROMIUM (T)	23.0	LINDANE	<0.15	1,1,2 TRICHLOROETHANE	<0.10
CHRYSENE	<0.25	A-BHC	<0.35	TRICHLOROETHYLENE	<0.10
COPPER	5.4	B-BHC	<0.42	2,4,6-TRICHLOROPHENOL	3.26
CYANIDE	0.176	D-BHC	<0.31	VINYL CHLORIDE	<0.10
4,4-DDT	<0.47	HEXACHLOROCYCLOPENTADIENE	<0.12	ZINC	32.75
4,4-DDE	<0.56	INDENO(1,2,3-CD)PYRENE	<0.37	TOXAPHENE	<8.7
4,4-DDD	<0.28	ISOPHORONE	<0.22		

KEY: UG/G = PARTS PER MILLION

= DETECTED COMPOUND

= NOT TESTED

NEW YORK STATE ENVIRONMENTAL LABORATORY NO. 10667

CHARLES M. SHAPIRO INCORPORATED

ENVIRONMENTAL SERVICES LABORATORY

(516) 291-2300

181 South Franklin Avenue, Suite 305 Valley Stream, N.Y. 11581

FAX: (516) 291-5425

SUMMARY OF PRIORITY POLLUTANT ANALYSES (SOLID MATRIX)

TABLE # 14 - A

SAMPLE NO.: 14 DESCRIPTION: SOIL SAMPLE- PITCHERS MOUND 1-3 INCHES BELOW GRADE
CLIENT: U.S.C.G.S. WILLETS POINT, FORT TOTTEN, N.Y. JOB NO.: 96-625

CONTAMINANT	CONC. UG/G	CONTAMINANT	CONC. UG/G	CONTAMINANT	CONC. UG/G
ACENAPHTHENE	<0.19	DIBENZO(A,H)ANTHRACENE	<0.25	LEAD	13.24
ACENAPHTHYLENE	<0.35	1,2 DICHLOROBENZENE	<0.10	MERCURY	0.035
ACROLEIN	<0.20	1,3 DICHLOROBENZENE	<0.10	NAPHTHALENE	<0.16
ACRYLONITRILE	<0.22	1,4 DICHLOROBENZENE	<0.10	NICKEL	10.63
ALDRIN	<0.19	3,3 DICHLOROBENZIDINE	<1.65	NITROBENZENE	<0.19
ANTIMONY	30.75	1,1 DICHLOROETHANE	<0.10	METHYLENE CHLORIDE	<0.10
ANTHRACENE	<0.19	1,2 DICHLOROETHANE	<0.10	2-NITROPHENOL	<0.36
ARSENIC	1.86	1,1 DICHLOROETHENE	<0.10	4-NITROPHENOL	<0.24
BENZO(A)ANTHRACENE	<0.78	TNS-1,2-DICHLOROETHENE	<0.10	4,6-DINITRO-2-METHYLPHENOL	<0.24
BENZENE	<0.10	DICHLOROBROMOMETHANE	<0.10	N-NITROSODIMETHYLAMINE	<0.21
BENZIDINE	<4.4	2,4 DICHLOROPHENOL	<0.27	N-NITROSODIPHENYLAMINE	<0.19
BENZO(A)PYRENE	<0.25	1,2 DICHLOROPROPANE	<0.10	N-NITROSODIPROPYLAMINE	<3.0
BENZO(B)FLUORANTHENE	<0.48	1,3 DICHLOROPROPENE	<0.10	PCB 1242	<2.2
BENZO(K)FLUORANTHENE	<0.25	DIELDRIN	<0.25	PCB 1254	<3.0
BENZO(G,H,I)PERYLENE	<0.41	2,4 DIMETHYLPHENOL	<0.27	PCB 1221	<1.7
BERYLLIUM	1.22	DIETHYL PHTHALATE	<0.22	PCB 1232	<3.5
BROMOFORM	<0.10	DIMETHYL PHTHALATE	<0.16	PCB 1248	<1.7
BROMOMETHANE	<0.10	2,4 DINITROTOLUENE	<0.57	PCB 1260	<2.5
4-BROMOPHENYL PHENYL ETHER	<0.19	2,6 DINITROTOLUENE	<0.19	PCB 1016	<2.5
CADMIUM	0.30	2,4 DINITROPHENOL	<0.42	PHENOL	<0.15
CARBON TETRACHLORIDE	<0.10	DIOXIN(2,3,7,8-TCDD)	-	PENTACHLOROPHENOL	<0.36
CHLORDANE	<4.69	1,2 DIPHENYLHYDRAZINE	<3.1	PHENANTHRENE	<0.54
CHLOROBENZENE	<0.10	A-ENDOSULFAN	<0.21	BIS-2ETHYLHEXYL PHTHALATE	<0.25
DIBROMOCHLOROMETHANE	<0.10	B-ENDOSULFAN	<0.42	BUTYL BENZYL PHTHALATE	<0.25
CHLOROETHANE	<0.10	ENDOSULFAN SULFATE	<0.56	DI-N-BUTYL PHTHALATE	<0.25
BIS-2CHLOROETHYL ETHER	<0.57	ENDRIN	<0.26	DI-N-OCTYL PHTHALATE	<0.25
BIS-2CHLOROETHOXY METHANE	<0.53	ENDRIN ALDEHYDE	<0.37	PYRENE	<0.19
2-CHLOROETHYL VINYL ETHER	<0.10	ETHYLBENZENE	<0.10	SELENIUM	0.660
4-CHLORO-3-METHYL PHENOL	<0.30	FLUORENE	<0.19	SILVER	0.730
CHLOROMETHANE	<0.40	FLUORANTHENE	<0.22	1,1,2,2-TETRACHLOROETHENE	<0.10
CHLOROFORM	<0.10	HEPTACHLOR	<0.19	TETRACHLOROETHYLENE	<0.10
2-CHLOROPHENOL	<0.33	HEPTACHLOR EPOXIDE	<0.22	THALLIUM	6.92
BIS-2CHLOROISOPROPYL ETHER	<0.57	HEXACHLOROETHANE	<0.16	TOLUENE	<0.10
2-CHLORONAPHTHALENE	<0.19	HEXACHLOROBENZENE	<0.19	1,2,4 TRICHLOROBENZENE	<0.19
4-CHLOROPHENYL PHENYL ETHER	<0.19	HEXACHLOROBUTADIENE	<0.09	1,1,1 TRICHLOROETHANE	<0.10
CHROMIUM (T)	22.28	LINDANE	<0.15	1,1,2 TRICHLOROETHANE	<0.10
CHRYSENE	<0.25	A-BHC	<0.35	TRICHLOROETHYLENE	<0.10
COPPER	5.98	B-BHC	<0.42	2,4,6-TRICHLOROPHENOL	<0.27
CYANIDE	0.526	D-BHC	<0.31	VINYL CHLORIDE	<0.10
4,4-DDT	<0.47	HEXACHLOROCYCLOPENTADIENE	<0.12	ZINC	32.71
4,4-DDE	<0.56	INDENO(1,2,3-CD)PYRENE	<0.37	TOXAPHENE	<8.7
4,4-DDD	<0.28	ISOPHORONE	<0.22		

KEY: UG/G = PARTS PER MILLION ☒ = DETECTED COMPOUND ☐ = NOT TESTED

NEW YORK STATE ENVIRONMENTAL LABORATORY NO. 10667

CHARLES M. SHAPIRO INCORPORATED

ENVIRONMENTAL SERVICES LABORATORY

(516) 291-2300

181 South Franklin Avenue, Suite 305 Valley Stream, N.Y. 11581

FAX: (516) 291-5425

SUMMARY OF PRIORITY POLLUTANT ANALYSES (SOLID MATRIX)

TABLE # 14 - B

SAMPLE NO.: 14 (DUP) DESCRIPTION: SOIL SAMPLE- PITCHERS MOUND 1-3 INCHES BELOW GRADE

CLIENT: U.S.C.G.S. WILLETS POINT, FORT TOTTEN, N.Y.

JOB NO.: 96-625

CONTAMINANT	CONC. UG/G	CONTAMINANT	CONC. UG/G	CONTAMINANT	CONC. UG/G
ACENAPHTHENE	<0.19	DIBENZO(A,H)ANTHRACENE	<0.25	LEAD	8.66
ACENAPHTHYLENE	<0.35	1,2 DICHLOROBENZENE	<0.10	MERCURY	0.0545
ACROLEIN	<0.20	1,3 DICHLOROBENZENE	<0.10	NAPHTHALENE	<0.16
ACRYLONITRILE	<0.22	1,4 DICHLOROBENZENE	<0.10	NICKEL	13.68
ALDRIN	<0.19	3,3 DICHLOROBENZIDINE	<1.65	NITROBENZENE	<0.19
ANTIMONY	9.27	1,1 DICHLOROETHANE	<0.10	METHYLENE CHLORIDE	<0.10
ANTHRACENE	<0.19	1,2 DICHLOROETHANE	<0.10	2-NITROPHENOL	<0.36
ARSENIC	1.68	1,1 DICHLOROETHENE	<0.10	4-NITROPHENOL	<0.24
BENZO(A)ANTHRACENE	<0.78	TNS-1,2-DICHLOROETHENE	<0.10	4,6-DINITRO-2-METHYLPHENOL	<0.24
BENZENE	<0.10	DICHLOROBROMOMETHANE	<0.10	N-NITROSODIMETHYLAMINE	<0.21
BENZIDINE	<4.4	2,4 DICHLOROPHENOL	<0.27	N-NITROSODIPHENYLAMINE	<0.19
BENZO(A)PYRENE	<0.25	1,2 DICHLOROPROPANE	<0.10	N-NITROSODIPROPYLAMINE	<3.0
BENZO(B)FLUORANTHENE	<0.48	1,3 DICHLOROPROPENE	<0.10	PCB 1242	<2.2
BENZO(K)FLUORANTHENE	<0.25	DIELDRIN	<0.25	PCB 1254	<3.0
BENZO(G,H,I)PERYLENE	<0.41	2,4 DIMETHYLPHENOL	<0.27	PCB 1221	<1.7
BERYLLIUM	1.05	DIETHYL PHTHALATE	<0.22	PCB 1232	<3.5
BROMOFORM	<0.10	DIMETHYL PHTHALATE	<0.16	PCB 1248	<1.7
BROMOMETHANE	<0.10	2,4 DINITROTOLUENE	<0.57	PCB 1260	<2.5
4-BROMOPHENYL PHENYL ETHER	<0.19	2,6 DINITROTOLUENE	<0.19	PCB 1016	<2.5
CADMIUM	0.41	2,4 DINITROPHENOL	<0.42	PHENOL	<0.15
CARBON TETRACHLORIDE	<0.10	DIOXIN(2,3,7,8-TCDD)	-	PENTACHLOROPHENOL	<0.36
CHLORDANE	<4.69	1,2 DIPHENYLHYDRAZINE	<3.1	PHENANTHRENE	<0.54
CHLOROBENZENE	<0.10	A-ENDOSULFAN	<0.21	BIS-2ETHYLHEXYL PHTHALATE	0.27
DIBROMOCHLOROMETHANE	<0.10	B-ENDOSULFAN	<0.42	BUTYL BENZYL PHTHALATE	<0.25
CHLOROETHANE	<0.10	ENDOSULFAN SULFATE	<0.56	DI-N-BUTYL PHTHALATE	6.25
BIS-2CHLOROETHYL ETHER	<0.57	ENDRIN	<0.26	DI-N-OCTYL PHTHALATE	<0.25
BIS-2CHLOROETHOXY METHANE	<0.53	ENDRIN ALDEHYDE	<0.37	PYRENE	<0.19
2-CHLOROETHYL VINYL ETHER	<0.10	ETHYLBENZENE	<0.10	SELENIUM	0.40
4-CHLORO-3-METHYL PHENOL	<0.30	FLUORENE	<0.19	SILVER	0.73
CHLOROMETHANE	<0.40	FLUORANTHENE	<0.22	1,1,2,2-TETRACHLOROETHENE	<0.10
CHLOROFORM	<0.10	HEPTACHLOR	<0.19	TETRACHLOROETHYLENE	<0.10
2-CHLOROPHENOL	<0.33	HEPTACHLOR EPOXIDE	<0.22	THALLIUM	6.94
BIS-2CHLOROISOPROPYL ETHER	<0.57	HEXACHLOROETHANE	<0.16	TOLUENE	<0.10
2-CHLORONAPHTHALENE	<0.19	HEXACHLOROBENZENE	<0.19	1,2,4 TRICHLOROBENZENE	<0.19
4-CHLOROPHENYL PHENYL ETHER	<0.19	HEXACHLOROBUTADIENE	<0.09	1,1,1 TRICHLOROETHANE	<0.10
CHROMIUM (T)	32.14	LINDANE	<0.15	1,1,2 TRICHLOROETHANE	<0.10
CHRYSENE	<0.25	A-BHC	<0.35	TRICHLOROETHYLENE	<0.10
COPPER	6.42	B-BHC	<0.42	2,4,6-TRICHLOROPHENOL	<0.27
CYANIDE	0.26	D-BHC	<0.31	VINYL CHLORIDE	<0.10
4,4-DDT	<0.47	HEXACHLOROCYCLOPENTADIENE	<0.12	ZINC	33.88
4,4-DDE	<0.56	INDENO(1,2,3-CD)PYRENE	<0.37	TOXAPHENE	<8.7
4,4-DDD	<0.28	ISOPHORONE	<0.22		

KEY: UG/G = PARTS PER MILLION

☒ = DETECTED COMPOUND

☐ = NOT TESTED

NEW YORK STATE ENVIRONMENTAL LABORATORY NO. 10667

CHARLES M. SHAPIRO INCORPORATED

ENVIRONMENTAL SERVICES LABORATORY

(516) 291-2300

181 South Franklin Avenue, Suite 305 Valley Stream, N.Y. 11581

FAX: (516) 291-5425

SUMMARY OF PRIORITY POLLUTANT ANALYSES (SOLID MATRIX)

TABLE # 15

SAMPLE NO.: 15 DESCRIPTION: SOIL SAMPLE- PITCHERS MOUND 3-6 INCHES BELOW GRADE
CLIENT: U.S.C.G.S. WILLETS POINT, FORT TOTTEN, N.Y. JOB NO.: 96-625

CONTAMINANT	CONC. UG/G	CONTAMINANT	CONC. UG/G	CONTAMINANT	CONC. UG/G
ACENAPHTHENE	<0.19	DIBENZO(A,H)ANTHRACENE	<0.25	LEAD	8.650
ACENAPHTHYLENE	<0.35	1,2 DICHLOROBENZENE	<0.10	MERCURY	0.007
ACROLEIN	<0.20	1,3 DICHLOROBENZENE	<0.10	NAPHTHALENE	<0.16
ACRYLONITRILE	<0.22	1,4 DICHLOROBENZENE	<0.10	NICKEL	10.27
ALDRIN	<0.19	3,3 DICHLOROBENZIDINE	<1.65	NITROBENZENE	<0.19
ANTIMONY	26.5	1,1 DICHLOROETHANE	<0.10	METHYLENE CHLORIDE	<0.10
ANTHRACENE	<0.19	1,2 DICHLOROETHANE	<0.10	2-NITROPHENOL	<0.36
ARSENIC	2.11	1,1 DICHLOROETHENE	<0.10	4-NITROPHENOL	<0.24
BENZO(A)ANTHRACENE	<0.78	TNS-1,2-DICHLOROETHENE	<0.10	4,6-DINITRO-2-METHYLPHENOL	<0.24
BENZENE	<0.10	DICHLOROBROMOMETHANE	<0.10	N-NITROSODIMETHYLAMINE	<0.21
BENZIDINE	<4.4	2,4 DICHLOROPHENOL	<0.27	N-NITROSODIPHENYLAMINE	<0.19
BENZO(A)PYRENE	<0.25	1,2 DICHLOROPROPANE	<0.10	N-NITROSODIPROPYLAMINE	<3.0
BENZO(B)FLUORANTHENE	<0.48	1,3 DICHLOROPROPENE	<0.10	PCB 1242	<2.2
BENZO(K)FLUORANTHENE	<0.25	DIELDRIN	<0.25	PCB 1254	<3.0
BENZO(G,H,I)PERYLENE	<0.41	2,4 DIMETHYLPHENOL	<0.27	PCB 1221	<1.7
BERYLLIUM	1.05	DIETHYL PHTHALATE	<0.22	PCB 1232	<3.5
BROMOFORM	<0.10	DIMETHYL PHTHALATE	<0.16	PCB 1248	<1.7
BROMOMETHANE	<0.10	2,4 DINITROTOLUENE	<0.57	PCB 1260	<2.5
4-BROMOPHENYL PHENYL ETHER	<0.19	2,6 DINITROTOLUENE	<0.19	PCB 1016	<2.5
CADMIUM	0.30	2,4 DINITROPHENOL	<0.42	PHENOL	<0.15
CARBON TETRACHLORIDE	<0.10	DIOXIN(2,3,7,8-TCDD)	-	PENTACHLOROPHENOL	<0.36
CHLORDANE	<4.69	1,2 DIPHENYLHYDRAZINE	<3.1	PHENANTHRENE	<0.54
CHLORO BENZENE	<0.10	A-ENDOSULFAN	<0.21	BIS-2ETHYLHEXYL PHTHALATE	0.62
DIBROMOCHLOROMETHANE	<0.10	B-ENDOSULFAN	<0.42	BUTYL BENZYL PHTHALATE	<0.25
CHLOROETHANE	<0.10	ENDOSULFAN SULFATE	<0.56	DI-N-BUTYL PHTHALATE	5.84
BIS-2CHLOROETHYL ETHER	<0.57	ENDRIN	<0.26	DI-N-OCTYL PHTHALATE	<0.25
BIS-2CHLOROETHOXY METHANE	<0.53	ENDRIN ALDEHYDE	<0.37	PYRENE	<0.19
2-CHLOROETHYL VINYL ETHER	<0.10	ETHYLBENZENE	<0.10	SELENIUM	0.930
4-CHLORO-3-METHYL PHENOL	<0.30	FLUORENE	<0.19	SILVER	0.73
CHLOROMETHANE	<0.40	FLUORANTHENE	<0.22	1,1,2,2-TETRACHLOROETHENE	<0.10
CHLOROFORM	<0.10	HEPTACHLOR	<0.19	TETRACHLOROETHYLENE	<0.10
2-CHLOROPHENOL	<0.33	HEPTACHLOR EPOXIDE	<0.22	THALLIUM	6.930
BIS-2CHLOROISOPROPYL ETHER	<0.57	HEXACHLOROETHANE	<0.16	TOLUENE	<0.10
2-CHLORONAPHTHALENE	<0.19	HEXACHLOROBENZENE	<0.19	1,2,4 TRICHLOROBENZENE	<0.19
4-CHLOROPHENYL PHENYL ETHER	<0.19	HEXACHLOROBUTADIENE	<0.09	1,1,1 TRICHLOROETHANE	<0.10
CHROMIUM (T)	25.09	LINDANE	<0.15	1,1,2 TRICHLOROETHANE	<0.10
CHRYSENE	<0.25	A-BHC	<0.35	TRICHLOROETHYLENE	<0.10
COPPER	3.89	B-BHC	<0.42	2,4,6-TRICHLOROPHENOL	<0.27
CYANIDE	0.176	D-BHC	<0.31	VINYL CHLORIDE	<0.10
1,4-DDT	<0.47	HEXACHLOROCYCLOPENTADIENE	<0.12	ZINC	33.700
4,4-DDE	<0.56	INDENO(1,2,3-CD)PYRENE	<0.37	TOXAPHENE	<8.7
4,4-DDD	<0.28	ISOPHORONE	<0.22		

KEY: UG/G = PARTS PER MILLION ☐ = DETECTED COMPOUND ☐ = NOT TESTED

NEW YORK STATE ENVIRONMENTAL LABORATORY NO. 10667