

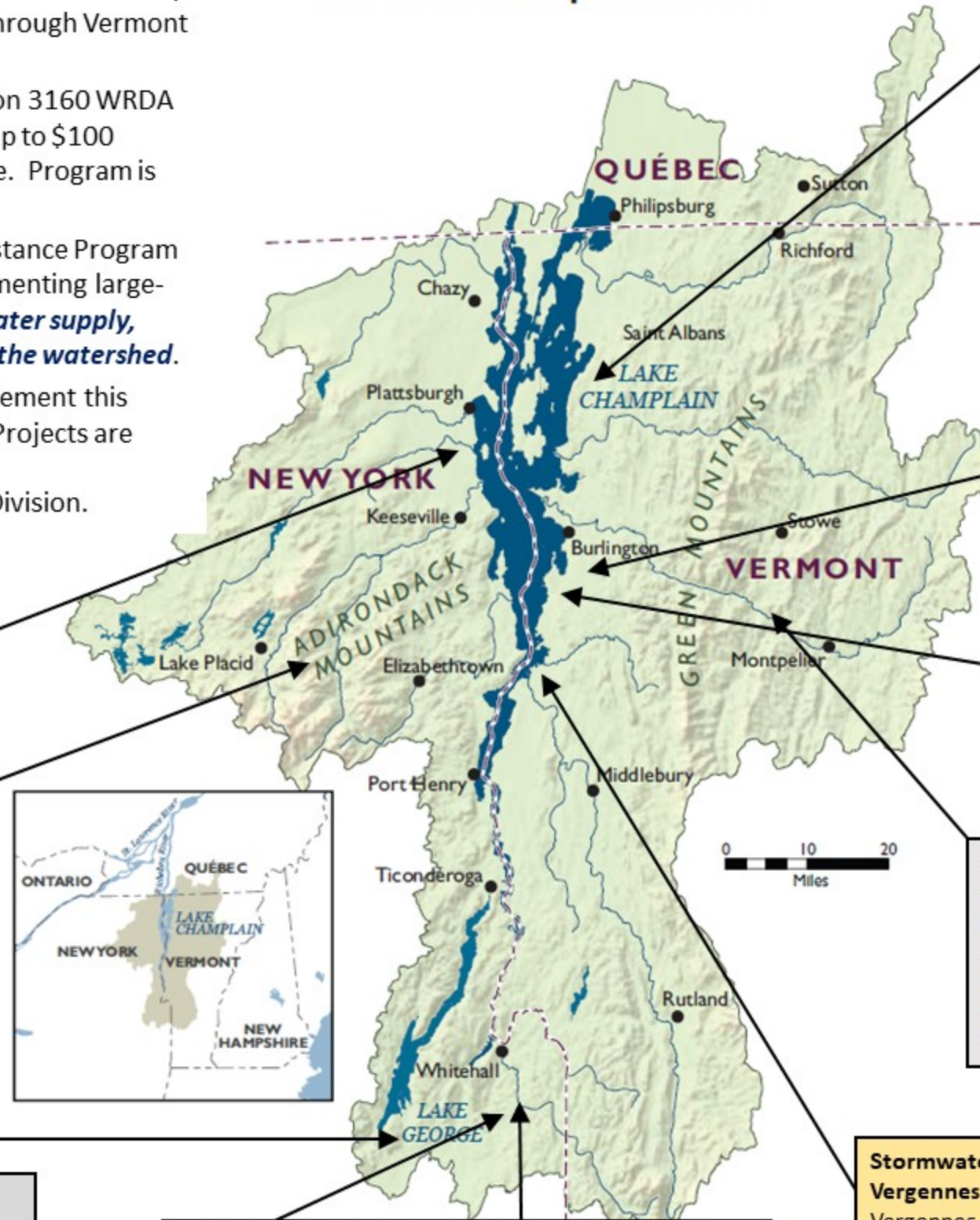
Lake Champlain Basin Program (Section 542 WRDA 2000)



Program Overview:

- The Lake Champlain Basin Program (LCBP) is a regional environmental assistance program for the Lake Champlain Watershed which is a nationally significant watershed extending from the New York State, through Vermont and into Quebec, Canada.
- Authorized in Section 542 WRDA 2000 as amended in Section 3160 WRDA 2007 and Section 8369 WRDA 2022. Congress authorized up to \$100 million for this program; \$14.33M has been received to date. Program is included in BIL (IIJA) for \$250K.
- Goal of the Lake Champlain Watershed Environmental Assistance Program is to provide assistance with planning, designing and implementing large-scale projects which **protect and enhance water quality, water supply, ecosystem integrity and other water-related issues within the watershed.**
- The LCBP is the administrative partner of the USACE to implement this program under the terms of a General Management Plan. Projects are cost-shared 65% federal, 35% non-federal.
- PPA execution authority is delegated to the North Atlantic Division.

The Lake Champlain Basin



Phosphorus Reduction on Jewett and Stevens Brooks, St. Albans Bay, St. Albans, VT – (ACTIVE). Partner & Total Cost: Vermont Agency of Natural Resources, \$516K

Recommended a plan and develop conceptual design to reduce the internal phosphorus pollution that has built up within the sediment of the wetlands and bay.

Assistance Type: Study/Design

Stormwater Management Project at Bartlett Brook, South Burlington, VT – (COMPLETE - 2017) Partner & Total Cost: City of South Burlington, VT, \$2.93M

Reduced stormwater runoff and associated water pollution with bioretention, increased filtration, and wetland creation.

Assistance Type: Design & Construction

Potash Brook River Restoration Project, South Burlington, VT – (COMPLETE - 2017).

Partner & Total Cost: City of South Burlington, VT, \$91K*

Design and construct urban watershed restoration measures. *Total effort as final design & construction taken on by non-federal sponsor. Assistance Type: Design & Construction

Waterbury Dam Analysis, Waterbury, VT – (Completed 2020).

Partner & Total Cost: Vermont Agency of Natural Resources, \$550K Dam safety assessment study to meet the objectives and USACE safety standards. Remaining design & construction costs expected to be funded with Section 1177 WRDA 2016 (Funded in FY20 for \$40M).

Assistance Type: Study/Design

Stormwater Infrastructure Development Project, Vergennes, VT – Partner & Total Cost: City of Vergennes, \$2.5M

Project will address water quality issues caused by sewage overflow due to inadequate stormwater infrastructure. Assistance Type: Design

Project Status

- Completed
- Active
- Initiating PPA

Water Treatment Control Plant Phosphorus Reduction Study, Plattsburgh, NY – (COMPLETE)

Partner & Total Cost: City of Plattsburgh, NY, \$538K Provided 30% design for reducing phosphorus at the city's water pollution control plant. Assistance Type: Study/Design

Rivermede Natural Channel Restoration & Habitat Improvement Study, Town of Keene, NY – (COMPLETE) Partner & Total Cost:

Town of Keene, NY, \$180K Provided design for watershed restoration measures in a critical reach of AuSable River. Assistance Type: Study/Design

Storm Water Improvement Project, Lake George, NY – (COMPLETE - 2007). Partner & Total Cost: Village of Lake George, NY, \$100K.

Designed and constructed stormwater infiltration structures in the Beach Road Parking lot in the Village of Lake George to improve water quality in the lake. Assistance Type: Design & Construction

Canal Barrier Study on Lake Champlain Canal (Phase I), NY – (Completed).

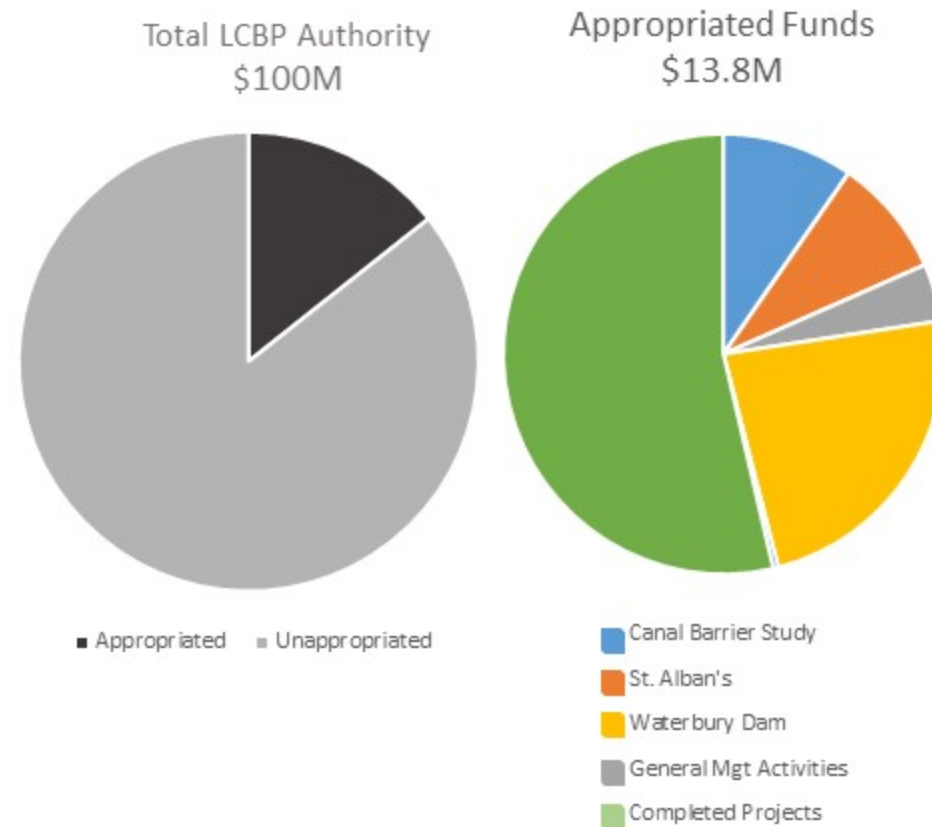
Partner & Total Cost: New England Interstate Water Pollution Control Commission, \$610K

Study, recommend, and provide preliminary design for a hydraulic barrier to control the spread of invasive species through the Canal. Assistance Type: Study

Canal Barrier Phase II Study, NY – (Initiated). Partner & Total Cost:

New York State Department of Environmental Conservation and New England Interstate Water Pollution Control Commission, \$4M Assistance Type: Study/Design

Overview of Funding of the Lake Champlain Basin Program



- Authorized up to \$100 million
- \$13.8 million has been appropriated to date
- FY25 Capability - \$2,250,000
- ~\$5.65 million has been allocated to projects
- Remaining funds that have been appropriated are to be used on new work such as the Champlain Canal AIS Barrier Phase II Study

Problem & Opportunity

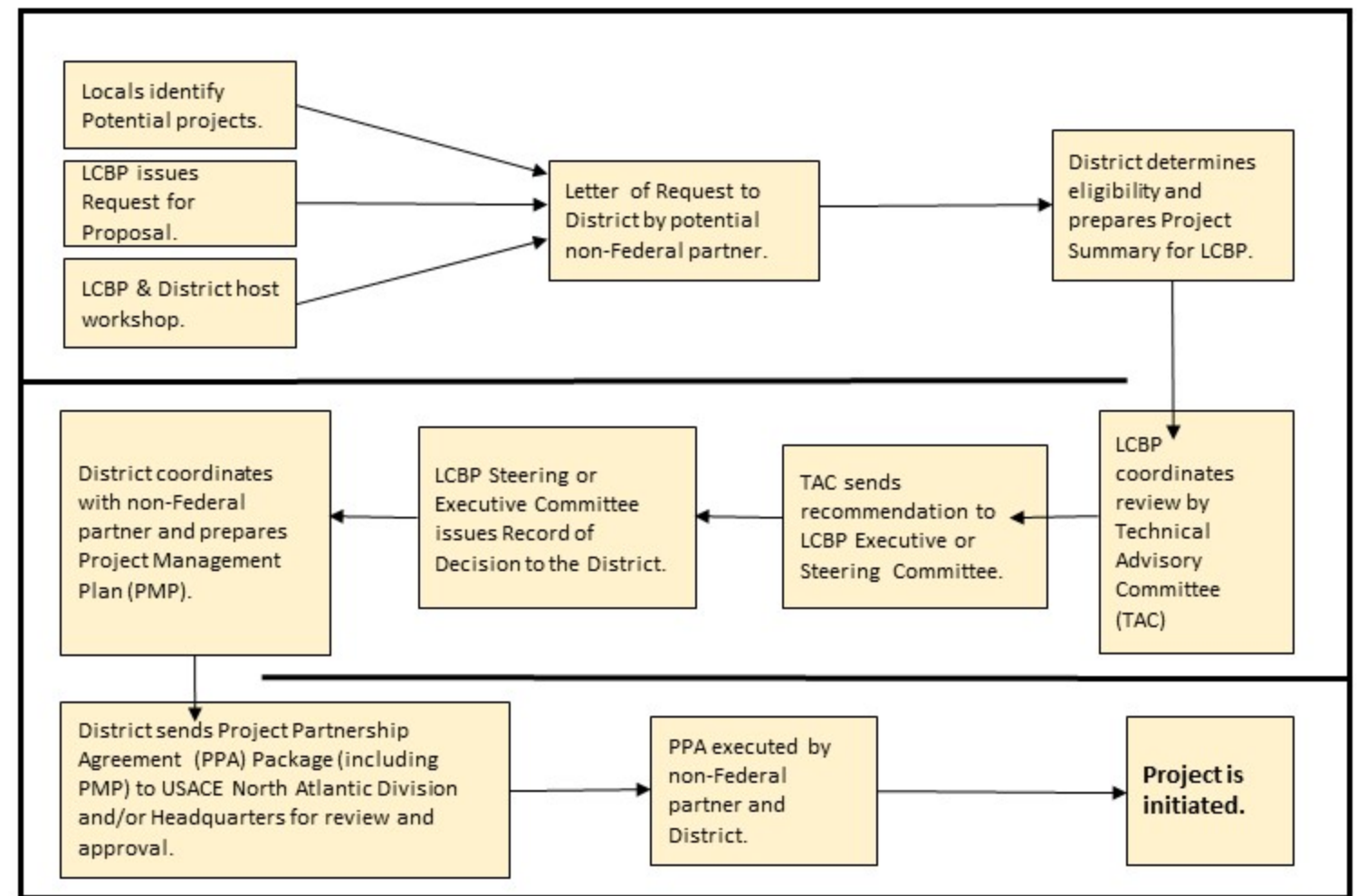
Although Lake Champlain remains a vital and attractive lake with many assets, there are several serious water quality and environmental problems that demand action. There exist an opportunity to enhance water quality, water supply, ecosystem integrity and other water related issues within the watershed through



ntation of the projects in the watershed.

Process for Projects in Lake Champlain Basin Program

- Projects are initiated through this process
- The Project Management Plan and Project Partnering Agreement guide the projects progress forward



Overview of Partnering of the Lake Champlain Basin Program

Lake Champlain Basin Program

- **Steering & Executive Committees**
 - Federal Agencies
 - 2 State DEC's (VT, NY)
 - Inter-country Technical Panel
- **Technical Advisory Committee (TAC)**
 - 2 State DEC's (VT, NY)
 - Inter-country Technical Panel



Collaboration with Other Federal Partners

- ❖ US Fish & Wildlife Service
- ❖ Environmental Protection Agency
- ❖ National Parks Service
- ❖ Lake Champlain Sea Grant
- ❖ US Department of Agriculture
- ❖ United States Geological Survey

New York District Contacts:

Project Manager
Jennifer Curran (917) 790-6202
Jennifer.L.Curran@usace.army.mil