



Department of the Army  
New York District Corps of Engineers  
Jacob K. Javits Federal Building  
26 Federal Plaza  
New York, NY 10278-0090

## Week of November 11 – November 17, 2013

The following pages display the results from the USACE-NYD real-time website for the week of Monday, November 11, through Sunday, November 17, 2013.

There were 10 blasts this week in the S-AK-3 project area.

We recorded vibrations in S-AK-3 project area. The maximum vibration recorded was 0.106 in/s recorded at Elizabeth Marina on November 13. Table 1 summarizes the blasts this week.

Page 2 summarizes dredge locations for this week. The map shows the week's last dredge locations by colored symbols, connected by colored lines to the week's previous locations marked by gray symbols. Drillboat Apache and operated in S-AK-3 all week.

The remaining odd pages display the home page showing the maximum vibration measured in all of the stations for the most recent event for each day:

- November 11
- November 12
- November 13
- November 14
- November 15
- November 16
- November 17

The even pages show the maximum vibration observed at each station along easting for each event.

The results for this week show the measurements at the three active stations: New York Container Terminal (NYCT), Elizabethport, and Elizabeth Marina. The station locations are on each page.

Ground vibrations at NYCT were all below 0.035 in/s. Vibrations at Elizabethport were all below 0.080 in/s. Vibrations at Elizabeth Marina were all below 0.110 in/s. All blast vibration measurements are below the contract vibration limits for this site.

**Table 1.** Blast Summary for this week

Blast	Date & Time EST/EDT of blast	Distance from blast to e4s stations (feet)	e4s Max. vibration (in/s)
AK-108	2013-11-12 09:15	0,820 - 2,020	0.105
AK-109	2013-11-12 15:30	1,100 - 2,880	0.0644
AK-110	2013-11-13 09:05	0,930 - 2,150	0.106
AK-111	2013-11-13 15:15	0,860 - 2,000	0.0744
AK-112	2013-11-14 09:05	0,970 - 2,150	0.0625
AK-113	2013-11-14 15:05	0,870 - 1,990	0.0612
AK-114	2013-11-15 09:05	1,060 - 2,310	0.101
AK-115	2013-11-16 09:09	0,660 - 1,700	0.0319
AK-115A	2013-11-16 10:47	0,660 - 1,700	0.0531
AK-116	2013-11-16 14:57	0,600 - 1,670	0.075



US Army Corps  
of Engineers®  
New York District

Home    Event Summary    Stations:    **Dredges**    History    Links

Dredge Position Summary

This page summarizes dredge positions for the week. The Arthur Kill contract area is mapped with a top-of-rock map. The navigation grid is superimposed. The map shows dredge locations by colored symbols, connected by colored lines to the week's past locations marked by gray symbols. The map resets beginning the Monday of each week.

Mousing over a dredge location produces a pop-up text box giving dredge name, date of location, and easting and northing coordinates of the location in the NAD83 New Jersey State Plane coordinate system.

Click on a station for station information.




[Todays Dredge Position](#)

[Latest Week's  
Dredge Position Summary](#)

[Project  
History List](#)

The table below lists the date, name, easting, northing, and notes for the week's dredge positions. The position is the last reported dredge position of the day.

Dredge Location Table

Date	Dredge Name	Easting	Northing	Notes
2013-11-17 Sun	Drillboat Kraken	 578689	659275	No Activity
2013-11-16 Sat				No Activity
2013-11-15 Fri				
2013-11-14 Thu				No Activity
2013-11-13 Wed				No Activity
2013-11-12 Tue				No Activity
2013-11-11 Mon				No Activity



| Earthworks, LLC    27 Glen Road, Sandy Hook, CT 06482    [www.e4sciences.com](http://www.e4sciences.com)





US Army Corps  
of Engineers®  
New York District

Home    Event Summary    Stations:    Dredges    History    Links

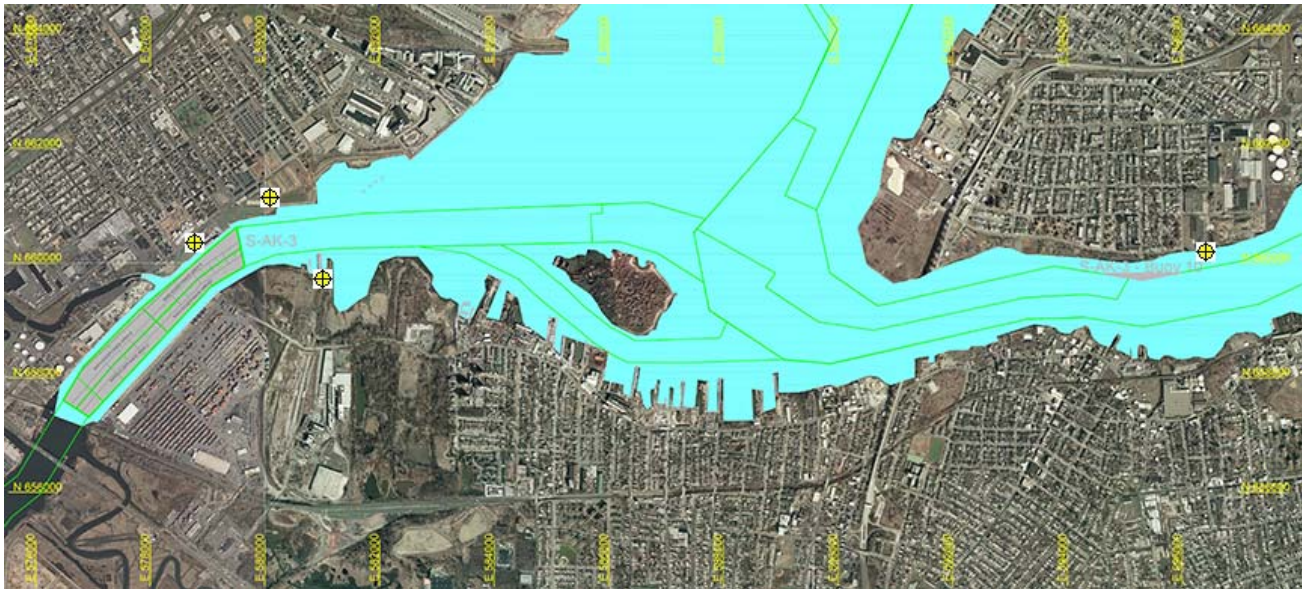
Arthur Kill Blast Vibration Summary

This site summarizes the measured ground vibrations in northwest Staten Island, from rock blasting in the Arthur Kill and other possible sources. The site is updated daily. The data are intended for the sole use of the US Army Corps of Engineers - New York District, for managing and monitoring the performance of NYNJ Harbor Deepening Project Contract in Arthur Kill starting 25 July 2011.

This page represents the most recent observations.

The Arthur Kill contract area is mapped below in light gray. The navigation grid is superimposed. Today's dredge locations are marked by colored symbols, connected by colored lines to this week's past locations marked by gray symbols. The drilling and blasting barge is marked in red. The easting and northing map coordinates in the New Jersey State Plane coordinate system are in yellow. The locations of active seismograph stations are marked by yellow station symbols. (e4sciences stations are circles. CDB stations are triangles.) Selecting a station activates its station page.

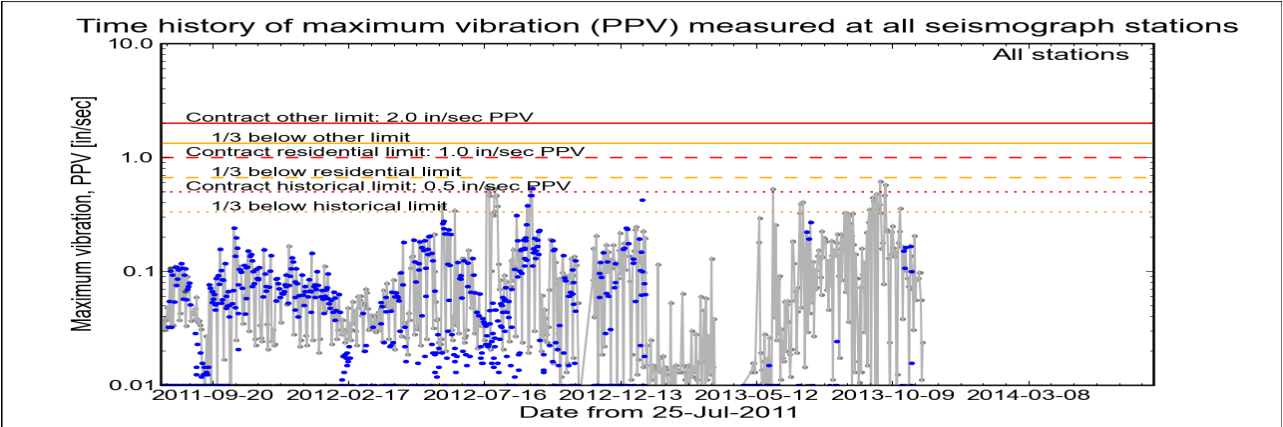
Click station for station information or click channel for event summary.



Latest Event Summary

The graph below is a plot of the maximum vibration recorded by any and all of the numerous seismograph stations during the current observation event (ambient or blast). The horizontal axis gives the date from the start of the project on 25 July 2011. The vertical axis gives the maximum vibration in peak particle velocity (PPV) in units of inches per second (in/sec). The red curves show the project's contract limits; the orange curves show one-third (1/3) below these contract limits. (The light gray curve is ambient-vibration level. The blue dots are blast-vibration levels. The dark gray dots are predicted blast-vibration levels.)

Date and time of last reading: Mon 11-Nov-2013 11:07:45



(Click on graph or [here](#) for larger view)

The table below lists the date, time, level, and station of the maximum-vibration recording for each and every event. Selecting an event activates its event page.

Blast ID	Date	Time	Max PPV (in / second)	Max PPV Station
<a href="#">Ambient</a>	<a href="#">Mon 11-Nov-2013</a>	11:07:45	0.0237	<a href="#">NYCT</a>
<a href="#">Ambient</a>	<a href="#">Sun 10-Nov-2013</a>	16:07:45	0.0112	<a href="#">NYCT</a>
<a href="#">Ambient</a>	<a href="#">Sat 09-Nov-2013</a>	14:02:36	0.0562	<a href="#">Elizabeth Marina</a>
<a href="#">Ambient</a>	<a href="#">Fri 08-Nov-2013</a>	14:02:36	0.0975	<a href="#">Elizabeth Marina</a>
<a href="#">Ambient</a>	<a href="#">Thu 07-Nov-2013</a>	14:02:33	0.0975	<a href="#">Elizabeth Marina</a>
<a href="#">Ambient</a>	<a href="#">Wed 06-Nov-2013</a>	14:02:33	0.0869	<a href="#">Elizabeth Marina</a>



Earthworks, LLC

27 Glen Road, Sandy Hook, CT 06482

[www.e4sciences.com](#)



US Army Corps  
of Engineers®  
New York District

Home    Event Summary    Stations:    Dredges    History    Links

Arthur Kill Blasting Event Summary

This page summarizes measurements of ground vibrations for the selected event. This page displays the maximum vibration recorded at each and every seismograph station during this event.

The Arthur Kill contract area is mapped below with a top-of-rock map. Today's dredge locations are marked by colored symbols, connected by colored lines to this week's past locations marked by gray symbols. The drilling and blasting barge location is marked in red. The easting and northing map coordinates in the New Jersey State Plane coordinate system are in yellow. The locations of active seismograph stations are marked by yellow station symbols. (*e4sciences stations are circles. CDB stations are triangles.*) Selecting a station activates its station page.

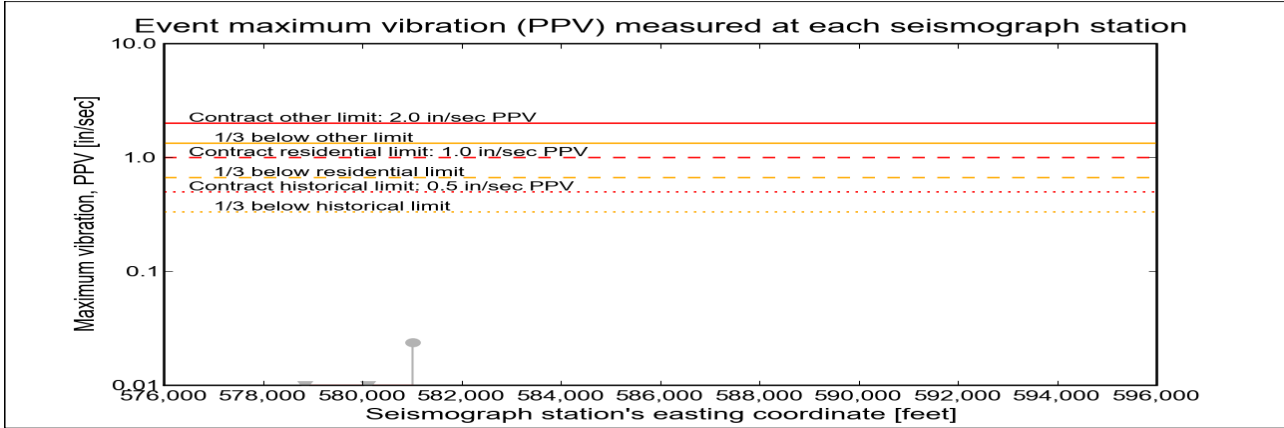
Click station for more information about the station.



Selected Event Summary

The graph below plots the maximum vibration during the selected event period (blast or ambient) recorded at each and every seismograph station along the easting positions. The vertical axis gives the maximum vibration in peak particle velocity (PPV) in units of inches per second (in/sec). If the maximum vibration level at a station is below 0.01 in/sec, the marker is a v-shaped triangle at 0.01 in/sec. (*Light-gray stems indicate ambient-vibration level. Black stems indicate blast-vibration level. Dark-gray stems indicate predicted blast-vibration level.*)

Date of reading: Mon 11-Nov-2013



(Click on graph or [here](#) for larger view)

The table below lists the date, time, and level of the maximum-vibration recording at each station for the selected event.

Station	Date	Time	Max PPV (in / second)	Vibration Type
<a href="#">Elizabeth Marina - e4s010</a>	<a href="#">Mon 11-Nov-2013</a>	01:17:34	0.00437	<a href="#">Ambient</a>
<a href="#">Elizabeth Port - e4s009</a>	<a href="#">Mon 11-Nov-2013</a>	01:17:34	0.00437	<a href="#">Ambient</a>
<a href="#">NYCT - e4s008</a>	<a href="#">Mon 11-Nov-2013</a>	11:07:45	0.0237	<a href="#">Ambient</a>



Earthworks, LLC

27 Glen Road, Sandy Hook, CT 06482

[www.e4sciences.com](http://www.e4sciences.com)





US Army Corps  
of Engineers®  
New York District

Home    Event Summary    Stations:    Dredges    History    Links

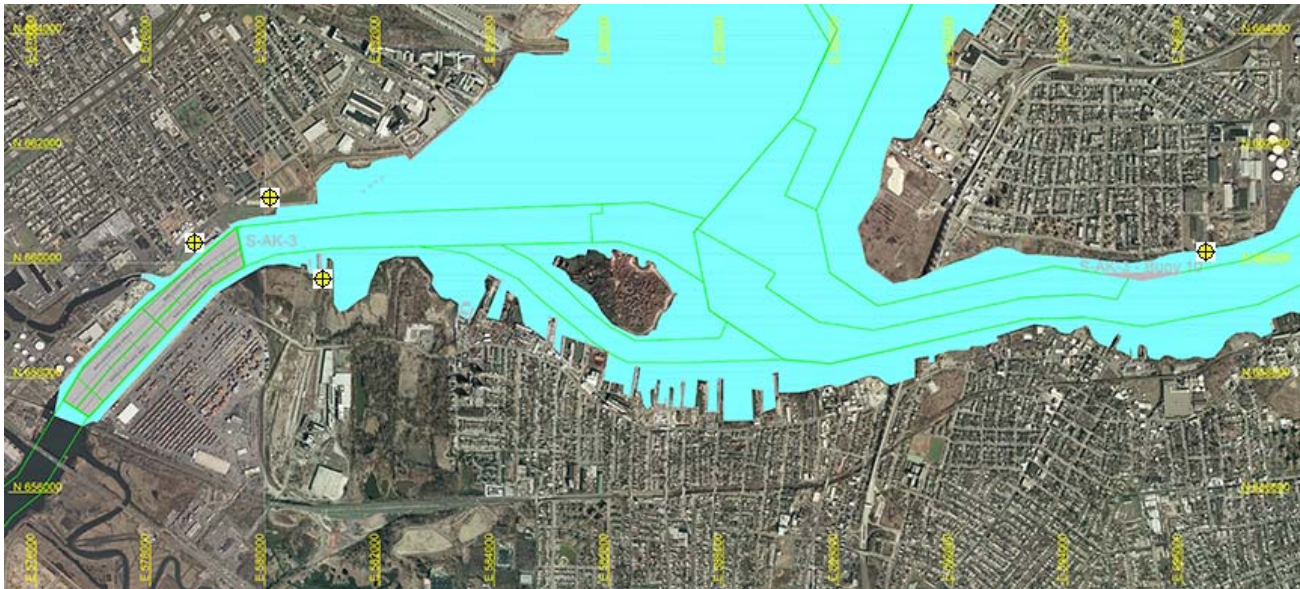
Arthur Kill Blast Vibration Summary

This site summarizes the measured ground vibrations in northwest Staten Island, from rock blasting in the Arthur Kill and other possible sources. The site is updated daily. The data are intended for the sole use of the US Army Corps of Engineers - New York District, for managing and monitoring the performance of NYNJ Harbor Deepening Project Contract in Arthur Kill starting 25 July 2011.

This page represents the most recent observations.

The Arthur Kill contract area is mapped below in light gray. The navigation grid is superimposed. Today's dredge locations are marked by colored symbols, connected by colored lines to this week's past locations marked by gray symbols. The drilling and blasting barge is marked in red. The easting and northing map coordinates in the New Jersey State Plane coordinate system are in yellow. The locations of active seismograph stations are marked by yellow station symbols. (e4sciences stations are circles. CDB stations are triangles.) Selecting a station activates its station page.

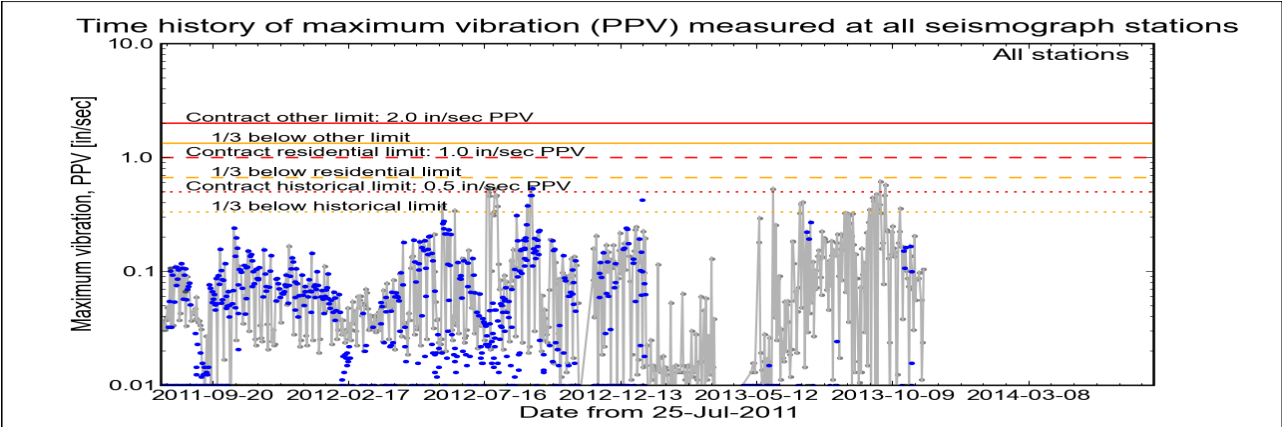
Click station for station information or click channel for event summary.



Latest Event Summary

The graph below is a plot of the maximum vibration recorded by any and all of the numerous seismograph stations during the current observation event (ambient or blast). The horizontal axis gives the date from the start of the project on 25 July 2011. The vertical axis gives the maximum vibration in peak particle velocity (PPV) in units of inches per second (in/sec). The red curves show the project's contract limits; the orange curves show one-third (1/3) below these contract limits. (The light gray curve is ambient-vibration level. The blue dots are blast-vibration levels. The dark gray dots are predicted blast-vibration levels.)

Date and time of last reading: Tue 12-Nov-2013 14:02:35



(Click on graph or [here](#) for larger view)

The table below lists the date, time, level, and station of the maximum-vibration recording for each and every event. Selecting an event activates its event page.

Blast ID	Date	Time	Max PPV (in / second)	Max PPV Station
<a href="#">Ambient</a>	<a href="#">Tue 12-Nov-2013</a>	14:02:35	0.1050	<a href="#">Elizabeth Marina</a>
<a href="#">Ambient</a>	<a href="#">Mon 11-Nov-2013</a>	11:07:45	0.0237	<a href="#">NYCT</a>
<a href="#">Ambient</a>	<a href="#">Sun 10-Nov-2013</a>	16:07:45	0.0112	<a href="#">NYCT</a>
<a href="#">Ambient</a>	<a href="#">Sat 09-Nov-2013</a>	14:02:36	0.0562	<a href="#">Elizabeth Marina</a>
<a href="#">Ambient</a>	<a href="#">Fri 08-Nov-2013</a>	14:02:36	0.0975	<a href="#">Elizabeth Marina</a>
<a href="#">Ambient</a>	<a href="#">Thu 07-Nov-2013</a>	14:02:33	0.0975	<a href="#">Elizabeth Marina</a>



US Army Corps  
of Engineers®  
New York District

Home    Event Summary    Stations:    Dredges    History    Links

Arthur Kill Blasting Event Summary

This page summarizes measurements of ground vibrations for the selected event. This page displays the maximum vibration recorded at each and every seismograph station during this event.

The Arthur Kill contract area is mapped below with a top-of-rock map. Today's dredge locations are marked by colored symbols, connected by colored lines to this week's past locations marked by gray symbols. The drilling and blasting barge location is marked in red. The easting and northing map coordinates in the New Jersey State Plane coordinate system are in yellow. The locations of active seismograph stations are marked by yellow station symbols. (e4sciences stations are circles. CDB stations are triangles.) Selecting a station activates its station page.

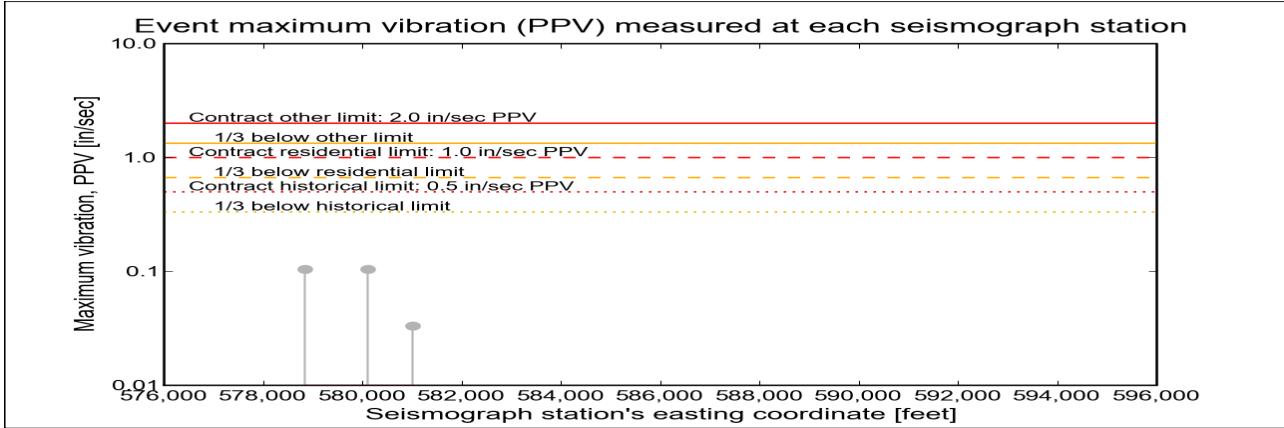
Click station for more information about the station.



Selected Event Summary

The graph below plots the maximum vibration during the selected event period (blast or ambient) recorded at each and every seismograph station along the easting positions. The vertical axis gives the maximum vibration in peak particle velocity (PPV) in units of inches per second (in/sec). If the maximum vibration level at a station is below 0.01 in/sec, the marker is a v-shaped triangle at 0.01 in/sec. (Light-gray stems indicate ambient-vibration level. Black stems indicate blast-vibration level. Dark-gray stems indicate predicted blast-vibration level.)

Date of reading: Tue 12-Nov-2013



(Click on graph or [here](#) for larger view)

The table below lists the date, time, and level of the maximum-vibration recording at each station for the selected event.

Station	Date	Time	Max PPV (in / second)	Vibration Type
<a href="#">Elizabeth Marina - e4s010</a>	<a href="#">Tue 12-Nov-2013</a>	14:02:35	0.105	<a href="#">Ambient</a>
<a href="#">Elizabeth Port - e4s009</a>	<a href="#">Tue 12-Nov-2013</a>	14:02:35	0.105	<a href="#">Ambient</a>
<a href="#">NYCT - e4s008</a>	<a href="#">Tue 12-Nov-2013</a>	14:07:44	0.0331	<a href="#">Ambient</a>







US Army Corps  
of Engineers®  
New York District

Home    Event Summary    Stations:    Dredges    History    Links

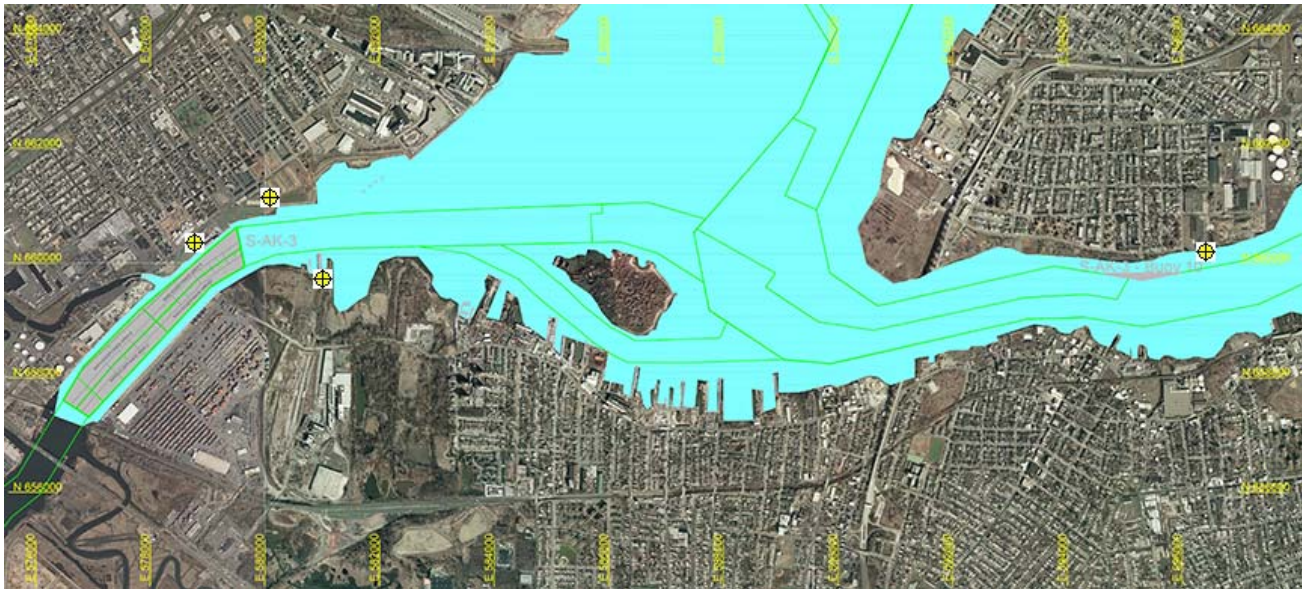
Arthur Kill Blast Vibration Summary

This site summarizes the measured ground vibrations in northwest Staten Island, from rock blasting in the Arthur Kill and other possible sources. The site is updated daily. The data are intended for the sole use of the US Army Corps of Engineers - New York District, for managing and monitoring the performance of NYNJ Harbor Deepening Project Contract in Arthur Kill starting 25 July 2011.

This page represents the most recent observations.

The Arthur Kill contract area is mapped below in light gray. The navigation grid is superimposed. Today's dredge locations are marked by colored symbols, connected by colored lines to this week's past locations marked by gray symbols. The drilling and blasting barge is marked in red. The easting and northing map coordinates in the New Jersey State Plane coordinate system are in yellow. The locations of active seismograph stations are marked by yellow station symbols. (e4sciences stations are circles. CDB stations are triangles.) Selecting a station activates its station page.

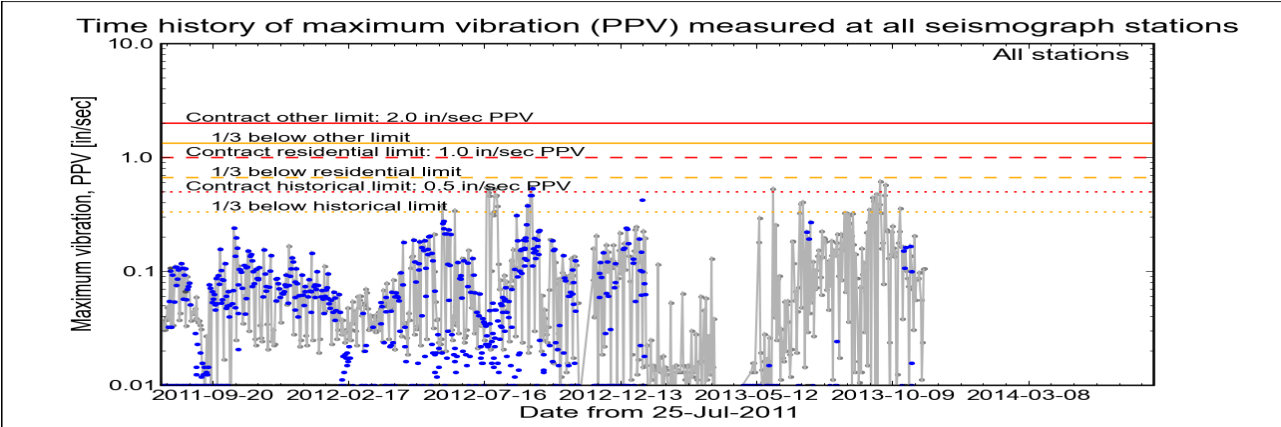
Click station for station information or click channel for event summary.



Latest Event Summary

The graph below is a plot of the maximum vibration recorded by any and all of the numerous seismograph stations during the current observation event (ambient or blast). The horizontal axis gives the date from the start of the project on 25 July 2011. The vertical axis gives the maximum vibration in peak particle velocity (PPV) in units of inches per second (in/sec). The red curves show the project's contract limits; the orange curves show one-third (1/3) below these contract limits. (The light gray curve is ambient-vibration level. The blue dots are blast-vibration levels. The dark gray dots are predicted blast-vibration levels.)

Date and time of last reading: Wed 13-Nov-2013 14:02:35



(Click on graph or [here](#) for larger view)

The table below lists the date, time, level, and station of the maximum-vibration recording for each and every event. Selecting an event activates its event page.

Blast ID	Date	Time	Max PPV (in / second)	Max PPV Station
<a href="#">Ambient</a>	<a href="#">Wed 13-Nov-2013</a>	14:02:35	0.1060	<a href="#">Elizabeth Marina</a>
<a href="#">Ambient</a>	<a href="#">Tue 12-Nov-2013</a>	14:02:35	0.1050	<a href="#">Elizabeth Marina</a>
<a href="#">Ambient</a>	<a href="#">Mon 11-Nov-2013</a>	11:07:45	0.0237	<a href="#">NYCT</a>
<a href="#">Ambient</a>	<a href="#">Sun 10-Nov-2013</a>	16:07:45	0.0112	<a href="#">NYCT</a>
<a href="#">Ambient</a>	<a href="#">Sat 09-Nov-2013</a>	14:02:36	0.0562	<a href="#">Elizabeth Marina</a>
<a href="#">Ambient</a>	<a href="#">Fri 08-Nov-2013</a>	14:02:36	0.0975	<a href="#">Elizabeth Marina</a>



| Earthworks, LLC

27 Glen Road, Sandy Hook, CT 06482

[www.e4sciences.com](#)



US Army Corps  
of Engineers®  
New York District

Home    Event Summary    Stations:    Dredges    History    Links

Arthur Kill Blasting Event Summary

This page summarizes measurements of ground vibrations for the selected event. This page displays the maximum vibration recorded at each and every seismograph station during this event.

The Arthur Kill contract area is mapped below with a top-of-rock map. Today's dredge locations are marked by colored symbols, connected by colored lines to this week's past locations marked by gray symbols. The drilling and blasting barge location is marked in red. The easting and northing map coordinates in the New Jersey State Plane coordinate system are in yellow. The locations of active seismograph stations are marked by yellow station symbols. (*e4sciences stations are circles. CDB stations are triangles.*) Selecting a station activates its station page.

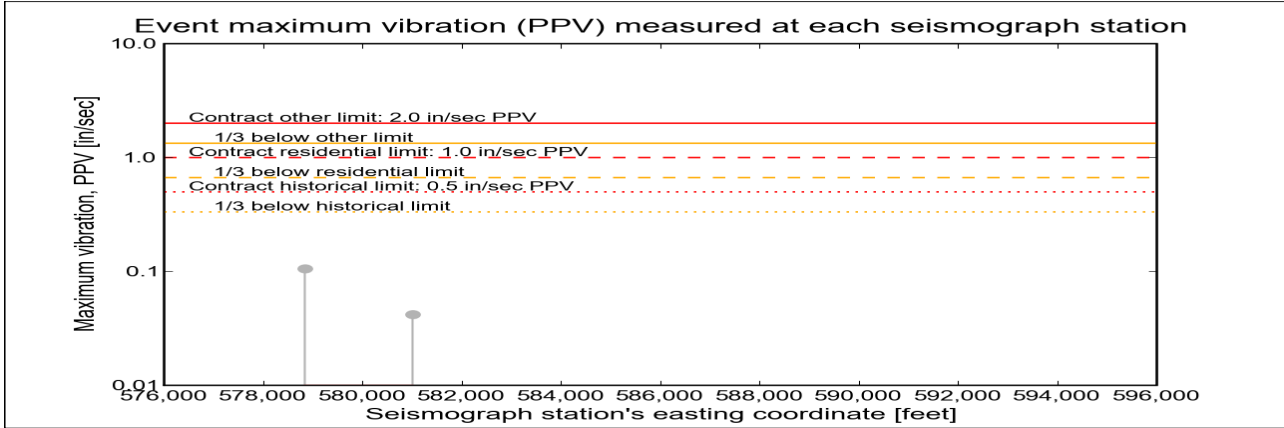
Click station for more information about the station.



Selected Event Summary

The graph below plots the maximum vibration during the selected event period (blast or ambient) recorded at each and every seismograph station along the easting positions. The vertical axis gives the maximum vibration in peak particle velocity (PPV) in units of inches per second (in/sec). If the maximum vibration level at a station is below 0.01 in/sec, the marker is a v-shaped triangle at 0.01 in/sec. (*Light-gray stems indicate ambient-vibration level. Black stems indicate blast-vibration level. Dark-gray stems indicate predicted blast-vibration level.*)

Date of reading: Wed 13-Nov-2013



(Click on graph or [here](#) for larger view)

The table below lists the date, time, and level of the maximum-vibration recording at each station for the selected event.

Station	Date	Time	Max PPV (in / second)	Vibration Type
<a href="#">Elizabeth Marina - e4s010</a>	Wed 13-Nov-2013	14:02:35	0.106	<a href="#">Ambient</a>
<a href="#">NYCT - e4s008</a>	Wed 13-Nov-2013	15:31:49	0.0419	<a href="#">Ambient</a>



Earthworks, LLC

27 Glen Road, Sandy Hook, CT 06482

[www.e4sciences.com](http://www.e4sciences.com)





US Army Corps  
of Engineers®  
New York District

Home    Event Summary    Stations:    Dredges    History    Links

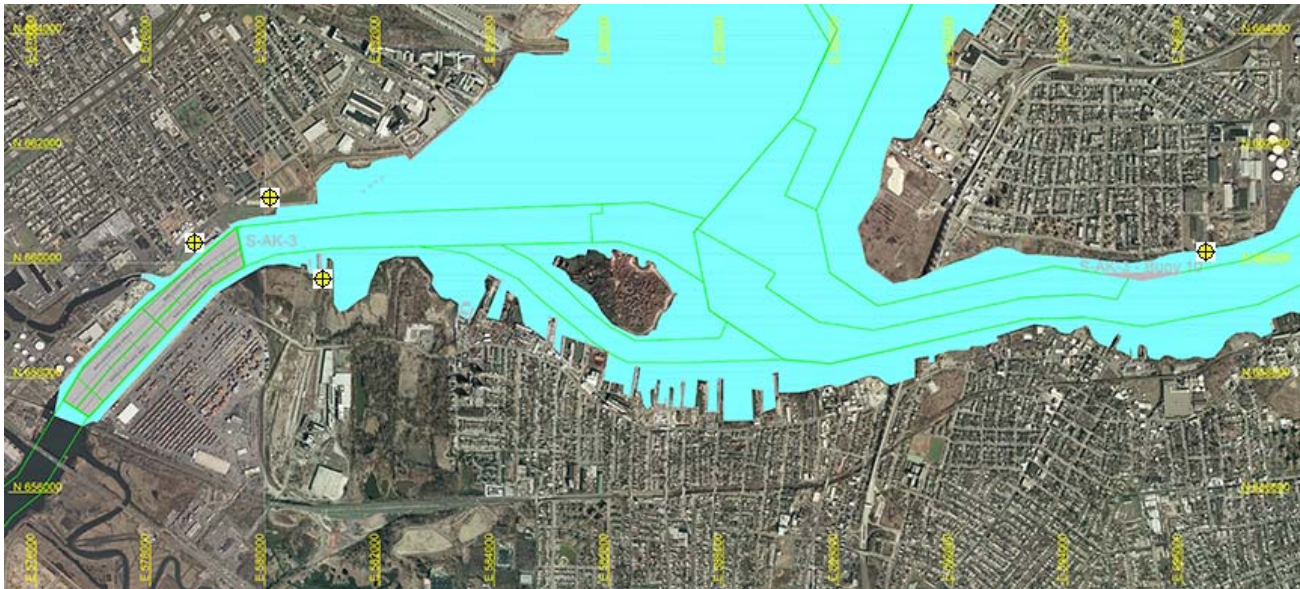
Arthur Kill Blast Vibration Summary

This site summarizes the measured ground vibrations in northwest Staten Island, from rock blasting in the Arthur Kill and other possible sources. The site is updated daily. The data are intended for the sole use of the US Army Corps of Engineers - New York District, for managing and monitoring the performance of NYNJ Harbor Deepening Project Contract in Arthur Kill starting 25 July 2011.

This page represents the most recent observations.

The Arthur Kill contract area is mapped below in light gray. The navigation grid is superimposed. Today's dredge locations are marked by colored symbols, connected by colored lines to this week's past locations marked by gray symbols. The drilling and blasting barge is marked in red. The easting and northing map coordinates in the New Jersey State Plane coordinate system are in yellow. The locations of active seismograph stations are marked by yellow station symbols. (e4sciences stations are circles. CDB stations are triangles.) Selecting a station activates its station page.

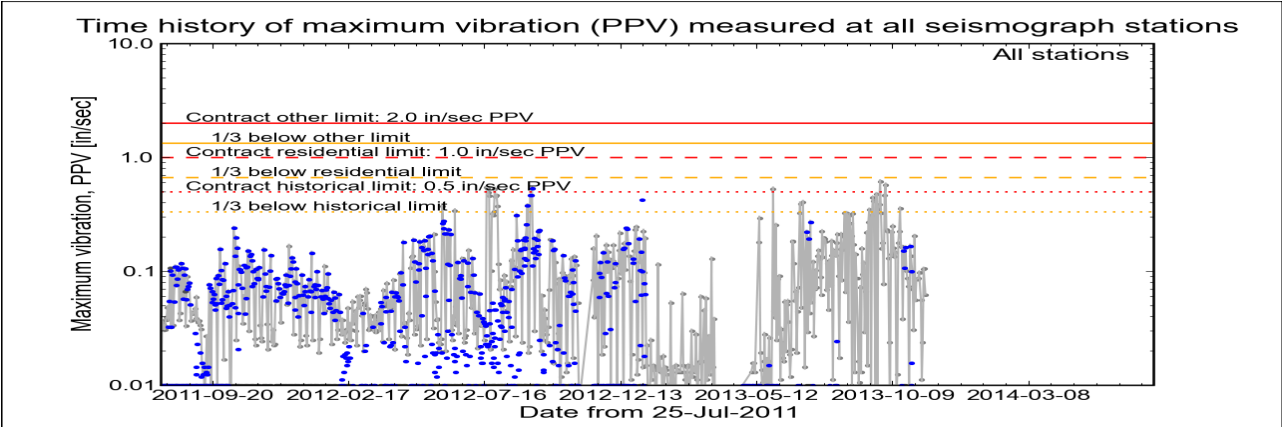
Click station for station information or click channel for event summary.



Latest Event Summary

The graph below is a plot of the maximum vibration recorded by any and all of the numerous seismograph stations during the current observation event (ambient or blast). The horizontal axis gives the date from the start of the project on 25 July 2011. The vertical axis gives the maximum vibration in peak particle velocity (PPV) in units of inches per second (in/sec). The red curves show the project's contract limits; the orange curves show one-third (1/3) below these contract limits. (The light gray curve is ambient-vibration level. The blue dots are blast-vibration levels. The dark gray dots are predicted blast-vibration levels.)

Date and time of last reading: Thu 14-Nov-2013 14:00:30



(Click on graph or [here](#) for larger view)

The table below lists the date, time, level, and station of the maximum-vibration recording for each and every event. Selecting an event activates its event page.

Blast ID	Date	Time	Max PPV (in / second)	Max PPV Station
<a href="#">Ambient</a>	<a href="#">Thu 14-Nov-2013</a>	14:00:30	0.0625	<a href="#">Elizabeth Marina</a>
<a href="#">Ambient</a>	<a href="#">Wed 13-Nov-2013</a>	14:02:35	0.1060	<a href="#">Elizabeth Marina</a>
<a href="#">Ambient</a>	<a href="#">Tue 12-Nov-2013</a>	14:02:35	0.1050	<a href="#">Elizabeth Marina</a>
<a href="#">Ambient</a>	<a href="#">Mon 11-Nov-2013</a>	11:07:45	0.0237	<a href="#">NYCT</a>
<a href="#">Ambient</a>	<a href="#">Sun 10-Nov-2013</a>	16:07:45	0.0112	<a href="#">NYCT</a>
<a href="#">Ambient</a>	<a href="#">Sat 09-Nov-2013</a>	14:02:36	0.0562	<a href="#">Elizabeth Marina</a>



Earthworks, LLC

27 Glen Road, Sandy Hook, CT 06482

[www.e4sciences.com](#)



US Army Corps  
of Engineers®  
New York District

Home    Event Summary    Stations:    Dredges    History    Links

Arthur Kill Blasting Event Summary

This page summarizes measurements of ground vibrations for the selected event. This page displays the maximum vibration recorded at each and every seismograph station during this event.

The Arthur Kill contract area is mapped below with a top-of-rock map. Today's dredge locations are marked by colored symbols, connected by colored lines to this week's past locations marked by gray symbols. The drilling and blasting barge location is marked in red. The easting and northing map coordinates in the New Jersey State Plane coordinate system are in yellow. The locations of active seismograph stations are marked by yellow station symbols. (e4sciences stations are circles. CDB stations are triangles.) Selecting a station activates its station page.

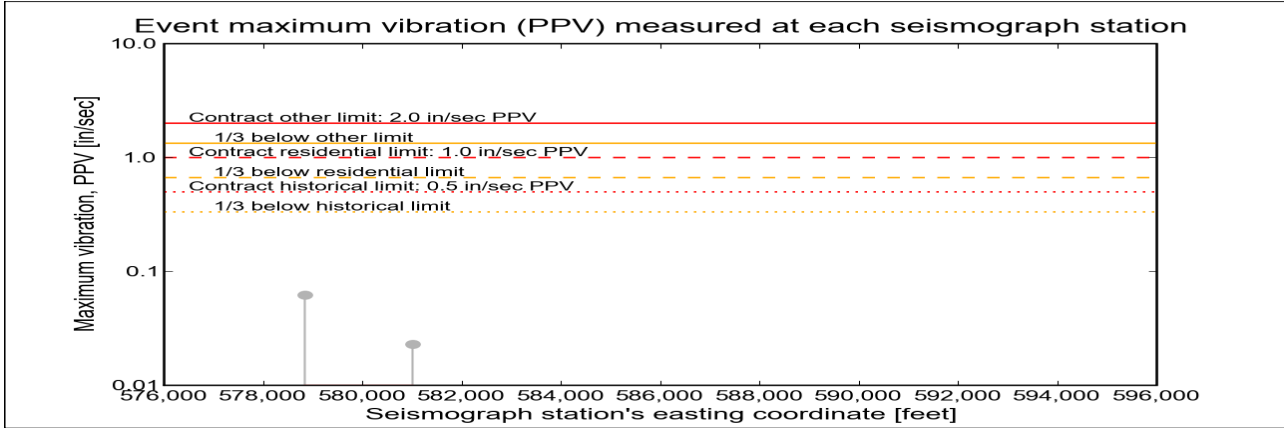
Click station for more information about the station.



Selected Event Summary

The graph below plots the maximum vibration during the selected event period (blast or ambient) recorded at each and every seismograph station along the easting positions. The vertical axis gives the maximum vibration in peak particle velocity (PPV) in units of inches per second (in/sec). If the maximum vibration level at a station is below 0.01 in/sec, the marker is a v-shaped triangle at 0.01 in/sec. (Light-gray stems indicate ambient-vibration level. Black stems indicate blast-vibration level. Dark-gray stems indicate predicted blast-vibration level.)

Date of reading: Thu 14-Nov-2013



(Click on graph or [here](#) for larger view)

The table below lists the date, time, and level of the maximum-vibration recording at each station for the selected event.

Station	Date	Time	Max PPV (in / second)	Vibration Type
<a href="#">Elizabeth Marina - e4s010</a>	Thu 14-Nov-2013	14:00:30	0.0625	<a href="#">Ambient</a>
<a href="#">NYCT - e4s008</a>	Thu 14-Nov-2013	02:38:01	0.0231	<a href="#">Ambient</a>







Home

Event Summary

Stations:

Dredges

History

Links

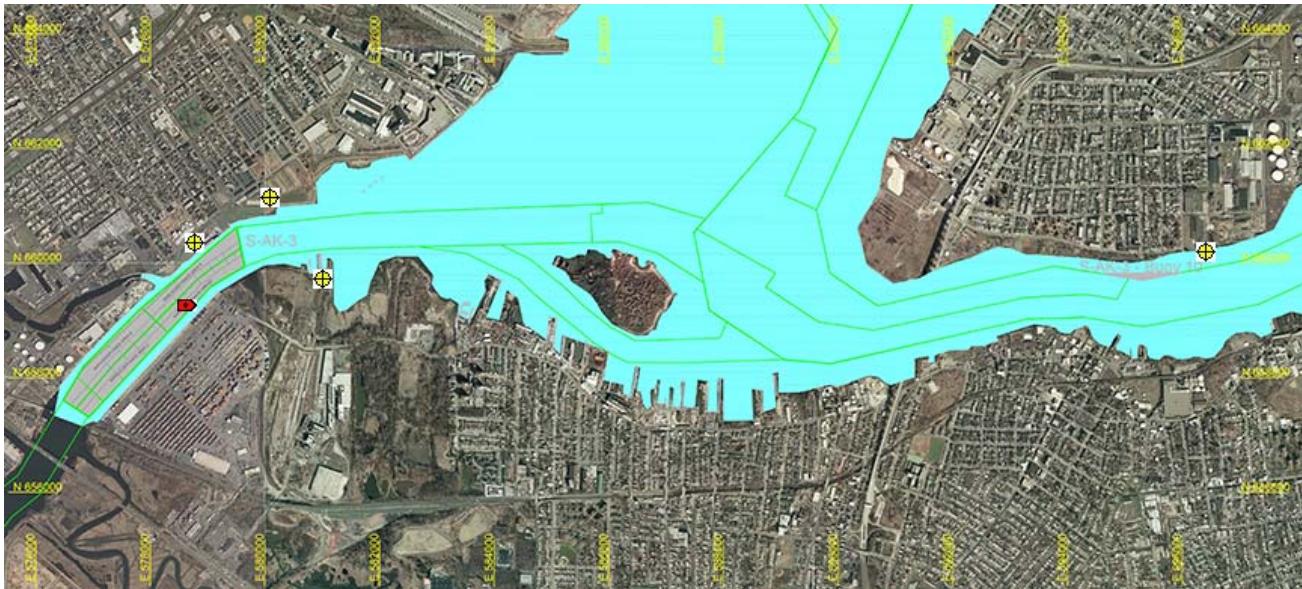
Arthur Kill Blast Vibration Summary

This site summarizes the measured ground vibrations in northwest Staten Island, from rock blasting in the Arthur Kill and other possible sources. The site is updated daily. The data are intended for the sole use of the US Army Corps of Engineers - New York District, for managing and monitoring the performance of NYNJ Harbor Deepening Project Contract in Arthur Kill starting 25 July 2011.

This page represents the most recent observations.

The Arthur Kill contract area is mapped below in light gray. The navigation grid is superimposed. Today's dredge locations are marked by colored symbols, connected by colored lines to this week's past locations marked by gray symbols. The drilling and blasting barge is marked in red. The easting and northing map coordinates in the New Jersey State Plane coordinate system are in yellow. The locations of active seismograph stations are marked by yellow station symbols. (e4sciences stations are circles. CDB stations are triangles.) Selecting a station activates its station page.

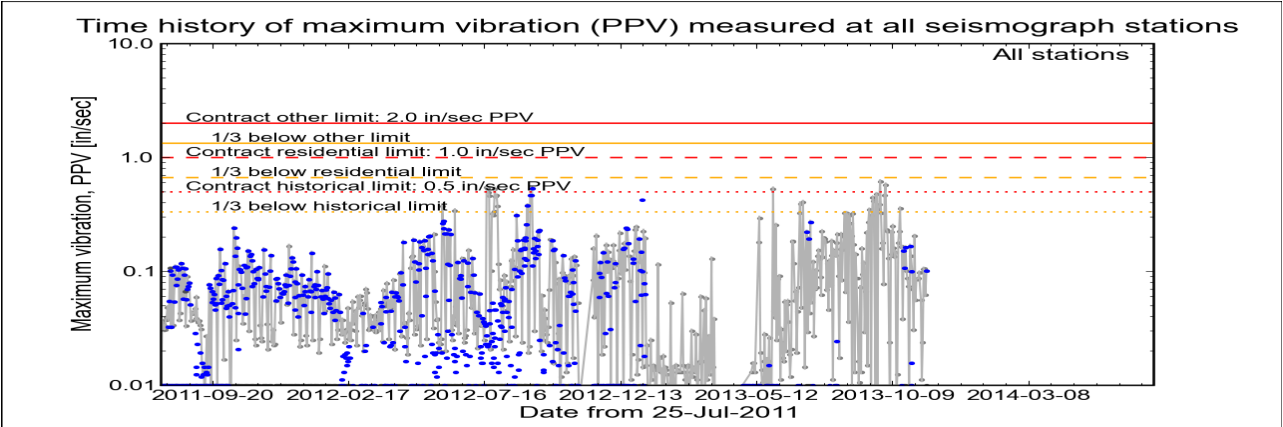
Click station for station information or click channel for event summary.



Latest Event Summary

The graph below is a plot of the maximum vibration recorded by any and all of the numerous seismograph stations during the current observation event (ambient or blast). The horizontal axis gives the date from the start of the project on 25 July 2011. The vertical axis gives the maximum vibration in peak particle velocity (PPV) in units of inches per second (in/sec). The red curves show the project's contract limits; the orange curves show one-third (1/3) below these contract limits. (The light gray curve is ambient-vibration level. The blue dots are blast-vibration levels. The dark gray dots are predicted blast-vibration levels.)

Date and time of last reading: Fri 15-Nov-2013 14:02:35



(Click on graph or [here](#) for larger view)

The table below lists the date, time, level, and station of the maximum-vibration recording for each and every event. Selecting an event activates its event page.

Blast ID	Date	Time	Max PPV (in / second)	Max PPV Station
Blast	<a href="#">Fri 15-Nov-2013</a>	14:02:35	0.1010	<a href="#">Elizabeth Marina</a>
Ambient	<a href="#">Thu 14-Nov-2013</a>	14:00:30	0.0625	<a href="#">Elizabeth Marina</a>
Ambient	<a href="#">Wed 13-Nov-2013</a>	14:02:35	0.1060	<a href="#">Elizabeth Marina</a>
Ambient	<a href="#">Tue 12-Nov-2013</a>	14:02:35	0.1050	<a href="#">Elizabeth Marina</a>
Ambient	<a href="#">Mon 11-Nov-2013</a>	11:07:45	0.0237	<a href="#">NYCT</a>
Ambient	<a href="#">Sun 10-Nov-2013</a>	16:07:45	0.0112	<a href="#">NYCT</a>



US Army Corps  
of Engineers®  
New York District

Home    Event Summary    Stations:    Dredges    History    Links

Arthur Kill Blasting Event Summary

This page summarizes measurements of ground vibrations for the selected event. This page displays the maximum vibration recorded at each and every seismograph station during this event.

The Arthur Kill contract area is mapped below with a top-of-rock map. Today's dredge locations are marked by colored symbols, connected by colored lines to this week's past locations marked by gray symbols. The drilling and blasting barge location is marked in red. The easting and northing map coordinates in the New Jersey State Plane coordinate system are in yellow. The locations of active seismograph stations are marked by yellow station symbols. (e4sciences stations are circles. CDB stations are triangles.) Selecting a station activates its station page.

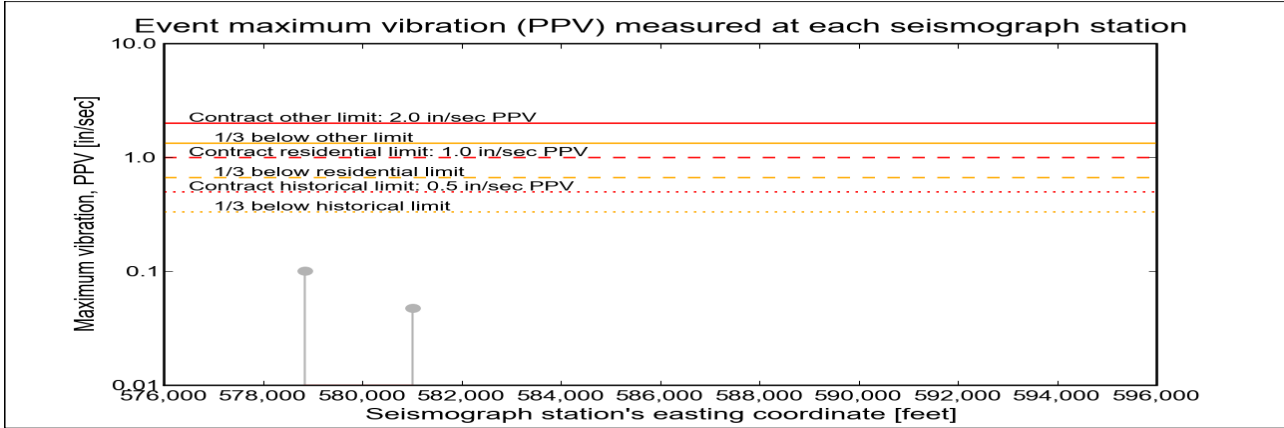
Click station for more information about the station.



Selected Event Summary

The graph below plots the maximum vibration during the selected event period (blast or ambient) recorded at each and every seismograph station along the easting positions. The vertical axis gives the maximum vibration in peak particle velocity (PPV) in units of inches per second (in/sec). If the maximum vibration level at a station is below 0.01 in/sec, the marker is a v-shaped triangle at 0.01 in/sec. (Light-gray stems indicate ambient-vibration level. Black stems indicate blast-vibration level. Dark-gray stems indicate predicted blast-vibration level.)

Date of reading: Fri 15-Nov-2013



(Click on graph or [here](#) for larger view)

The table below lists the date, time, and level of the maximum-vibration recording at each station for the selected event.

Station	Date	Time	Max PPV (in / second)	Vibration Type
Elizabeth Marina - e4s010	Fri 15-Nov-2013	14:02:35	0.101	Ambient
NYCT - e4s008	Fri 15-Nov-2013	14:13:26	0.0475	Ambient





US Army Corps  
of Engineers®  
New York District

Home    Event Summary    Stations:    Dredges    History    Links

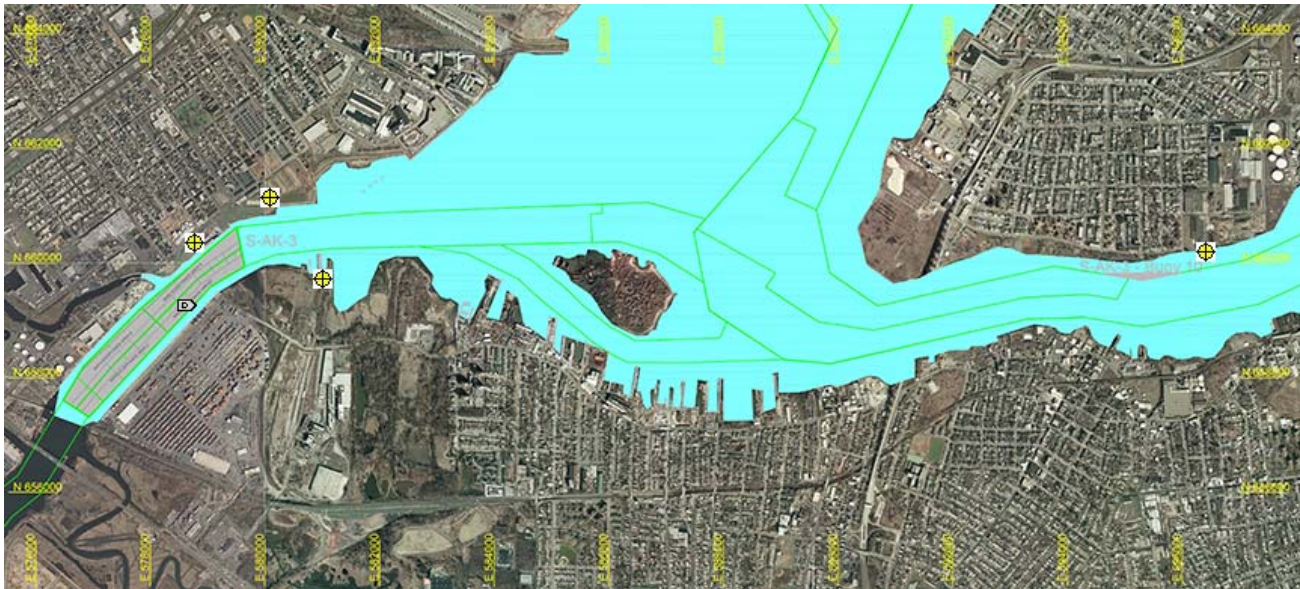
Arthur Kill Blast Vibration Summary

This site summarizes the measured ground vibrations in northwest Staten Island, from rock blasting in the Arthur Kill and other possible sources. The site is updated daily. The data are intended for the sole use of the US Army Corps of Engineers - New York District, for managing and monitoring the performance of NYNJ Harbor Deepening Project Contract in Arthur Kill starting 25 July 2011.

This page represents the most recent observations.

The Arthur Kill contract area is mapped below in light gray. The navigation grid is superimposed. Today's dredge locations are marked by colored symbols, connected by colored lines to this week's past locations marked by gray symbols. The drilling and blasting barge is marked in red. The easting and northing map coordinates in the New Jersey State Plane coordinate system are in yellow. The locations of active seismograph stations are marked by yellow station symbols. (e4sciences stations are circles. CDB stations are triangles.) Selecting a station activates its station page.

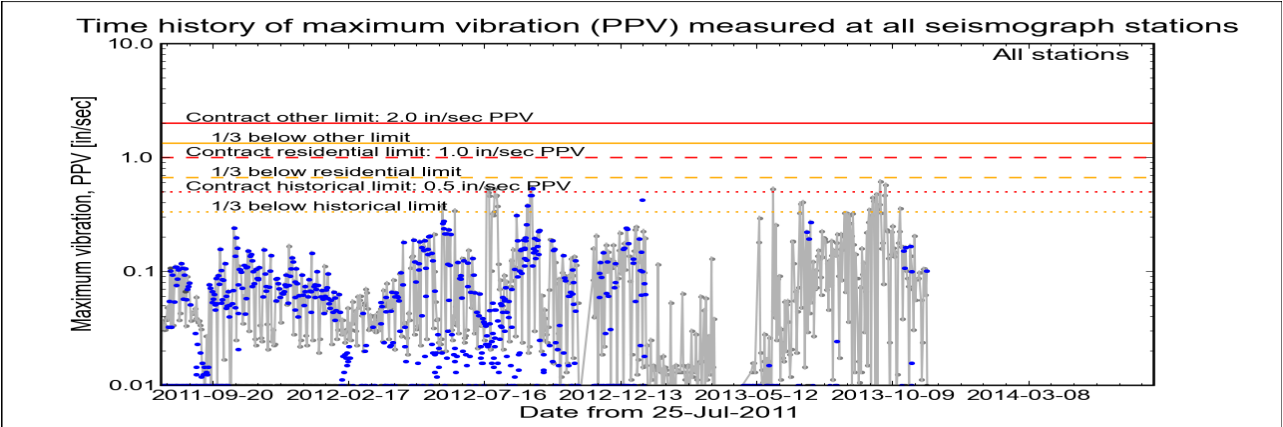
Click station for station information or click channel for event summary.



Latest Event Summary

The graph below is a plot of the maximum vibration recorded by any and all of the numerous seismograph stations during the current observation event (ambient or blast). The horizontal axis gives the date from the start of the project on 25 July 2011. The vertical axis gives the maximum vibration in peak particle velocity (PPV) in units of inches per second (in/sec). The red curves show the project's contract limits; the orange curves show one-third (1/3) below these contract limits. (The light gray curve is ambient-vibration level. The blue dots are blast-vibration levels. The dark gray dots are predicted blast-vibration levels.)

Date and time of last reading: Sat 16-Nov-2013 00:01:44



(Click on graph or [here](#) for larger view)

The table below lists the date, time, level, and station of the maximum-vibration recording for each and every event. Selecting an event activates its event page.

Blast ID	Date	Time	Max PPV (in / second)	Max PPV Station
<a href="#">Ambient</a>	<a href="#">Sat 16-Nov-2013</a>	00:01:44	0.0088	<a href="#">Bayonne</a>
<a href="#">Blast</a>	<a href="#">Fri 15-Nov-2013</a>	14:02:35	0.1010	<a href="#">Elizabeth Marina</a>
<a href="#">Ambient</a>	<a href="#">Thu 14-Nov-2013</a>	14:00:30	0.0625	<a href="#">Elizabeth Marina</a>
<a href="#">Ambient</a>	<a href="#">Wed 13-Nov-2013</a>	14:02:35	0.1060	<a href="#">Elizabeth Marina</a>
<a href="#">Ambient</a>	<a href="#">Tue 12-Nov-2013</a>	14:02:35	0.1050	<a href="#">Elizabeth Marina</a>
<a href="#">Ambient</a>	<a href="#">Mon 11-Nov-2013</a>	11:07:45	0.0237	<a href="#">NYCT</a>



Earthworks, LLC

27 Glen Road, Sandy Hook, CT 06482

www.e4sciences.com



US Army Corps  
of Engineers®  
New York District

Home    Event Summary    Stations:    Dredges    History    Links

Arthur Kill Blasting Event Summary

This page summarizes measurements of ground vibrations for the selected event. This page displays the maximum vibration recorded at each and every seismograph station during this event.

The Arthur Kill contract area is mapped below with a top-of-rock map. Today's dredge locations are marked by colored symbols, connected by colored lines to this week's past locations marked by gray symbols. The drilling and blasting barge location is marked in red. The easting and northing map coordinates in the New Jersey State Plane coordinate system are in yellow. The locations of active seismograph stations are marked by yellow station symbols. (e4sciences stations are circles. CDB stations are triangles.) Selecting a station activates its station page.

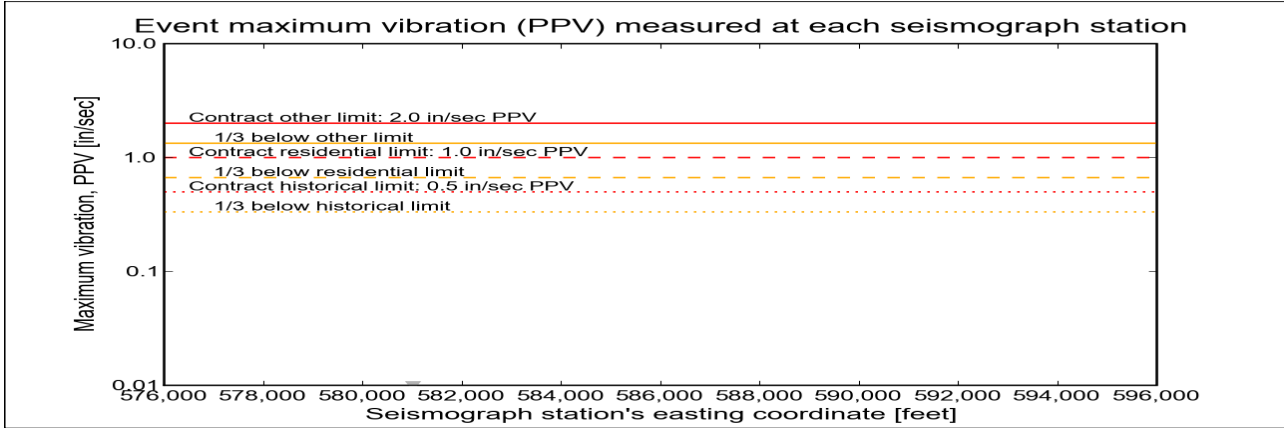
Click station for more information about the station.



Selected Event Summary

The graph below plots the maximum vibration during the selected event period (blast or ambient) recorded at each and every seismograph station along the easting positions. The vertical axis gives the maximum vibration in peak particle velocity (PPV) in units of inches per second (in/sec). If the maximum vibration level at a station is below 0.01 in/sec, the marker is a v-shaped triangle at 0.01 in/sec. (Light-gray stems indicate ambient-vibration level. Black stems indicate blast-vibration level. Dark-gray stems indicate predicted blast-vibration level.)

Date of reading: Sat 16-Nov-2013



(Click on graph or [here](#) for larger view)

The table below lists the date, time, and level of the maximum-vibration recording at each station for the selected event.

Station	Date	Time	Max PPV (in / second)	Vibration Type
NYCT - e4s008	Sat 16-Nov-2013	00:07:44	0.00312	Ambient



Earthworks, LLC

27 Glen Road, Sandy Hook, CT 06482

[www.e4sciences.com](http://www.e4sciences.com)





US Army Corps  
of Engineers®  
New York District

Home    Event Summary    Stations:    Dredges    History    Links

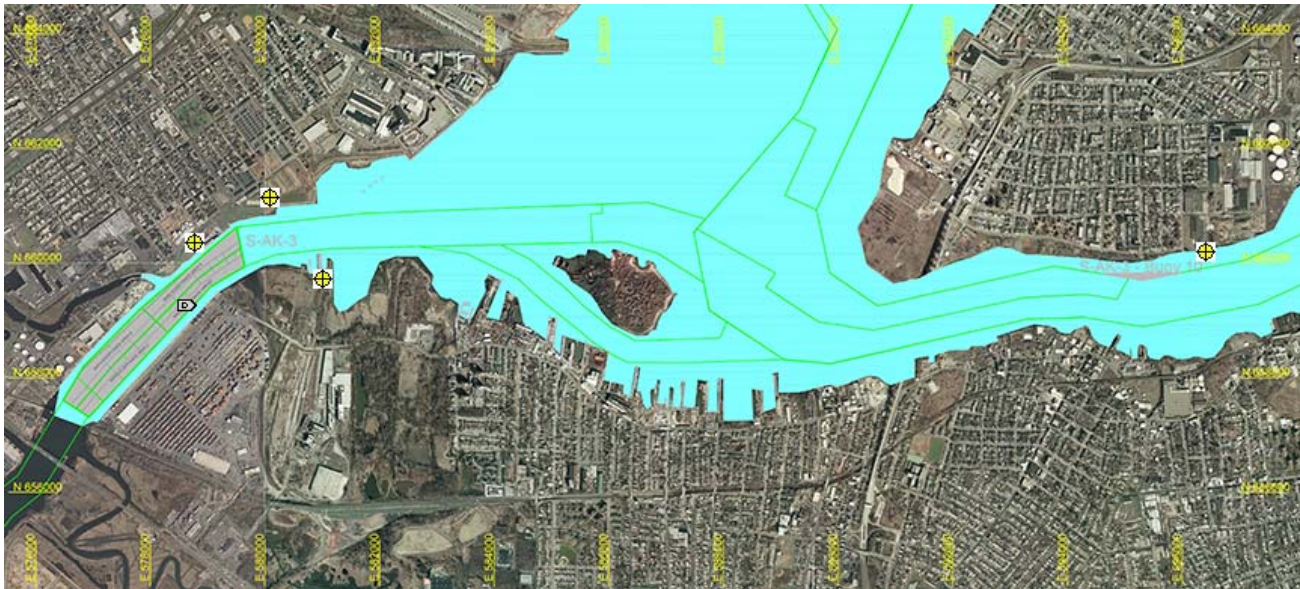
Arthur Kill Blast Vibration Summary

This site summarizes the measured ground vibrations in northwest Staten Island, from rock blasting in the Arthur Kill and other possible sources. The site is updated daily. The data are intended for the sole use of the US Army Corps of Engineers - New York District, for managing and monitoring the performance of NYNJ Harbor Deepening Project Contract in Arthur Kill starting 25 July 2011.

This page represents the most recent observations.

The Arthur Kill contract area is mapped below in light gray. The navigation grid is superimposed. Today's dredge locations are marked by colored symbols, connected by colored lines to this week's past locations marked by gray symbols. The drilling and blasting barge is marked in red. The easting and northing map coordinates in the New Jersey State Plane coordinate system are in yellow. The locations of active seismograph stations are marked by yellow station symbols. (e4sciences stations are circles. CDB stations are triangles.) Selecting a station activates its station page.

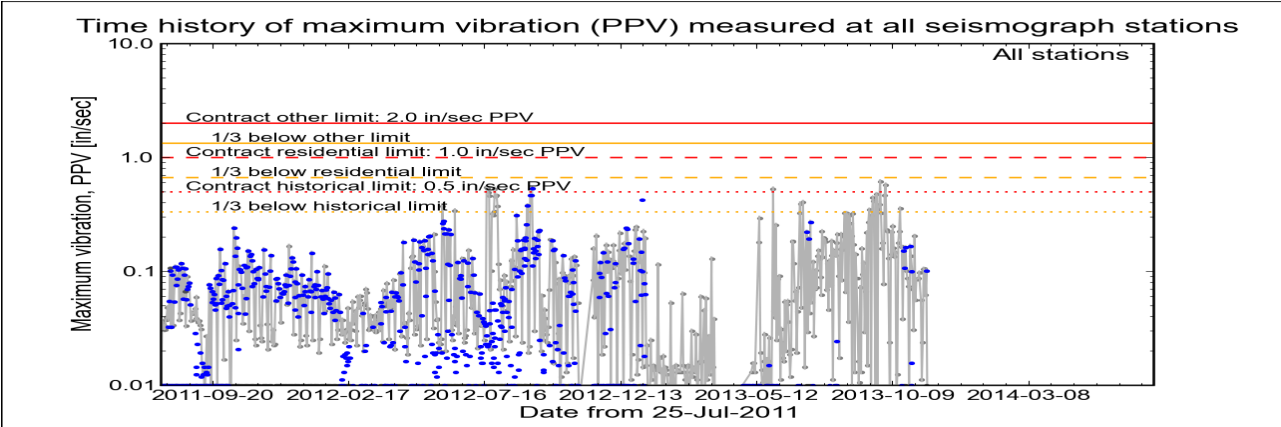
Click station for station information or click channel for event summary.



Latest Event Summary

The graph below is a plot of the maximum vibration recorded by any and all of the numerous seismograph stations during the current observation event (ambient or blast). The horizontal axis gives the date from the start of the project on 25 July 2011. The vertical axis gives the maximum vibration in peak particle velocity (PPV) in units of inches per second (in/sec). The red curves show the project's contract limits; the orange curves show one-third (1/3) below these contract limits. (The light gray curve is ambient-vibration level. The blue dots are blast-vibration levels. The dark gray dots are predicted blast-vibration levels.)

Date and time of last reading: Sat 16-Nov-2013 00:01:44



(Click on graph or [here](#) for larger view)

The table below lists the date, time, level, and station of the maximum-vibration recording for each and every event. Selecting an event activates its event page.

Blast ID	Date	Time	Max PPV (in / second)	Max PPV Station
Ambient	Sat 16-Nov-2013	00:01:44	0.0088	<a href="#">Bayonne</a>
Blast	Fri 15-Nov-2013	14:02:35	0.1010	<a href="#">Elizabeth Marina</a>
Ambient	Thu 14-Nov-2013	14:00:30	0.0625	<a href="#">Elizabeth Marina</a>
Ambient	Wed 13-Nov-2013	14:02:35	0.1060	<a href="#">Elizabeth Marina</a>
Ambient	Tue 12-Nov-2013	14:02:35	0.1050	<a href="#">Elizabeth Marina</a>
Ambient	Mon 11-Nov-2013	11:07:45	0.0237	<a href="#">NYCT</a>



Earthworks, LLC

27 Glen Road, Sandy Hook, CT 06482

[www.e4sciences.com](http://www.e4sciences.com)



US Army Corps  
of Engineers®  
New York District

Home   Event Summary   Stations:   Dredges   History   Links

Arthur Kill Blasting Event Summary

This page summarizes measurements of ground vibrations for the selected event. This page displays the maximum vibration recorded at each and every seismograph station during this event.

The Arthur Kill contract area is mapped below with a top-of-rock map. Today's dredge locations are marked by colored symbols, connected by colored lines to this week's past locations marked by gray symbols. The drilling and blasting barge location is marked in red. The easting and northing map coordinates in the New Jersey State Plane coordinate system are in yellow. The locations of active seismograph stations are marked by yellow station symbols. (e4sciences stations are circles. CDB stations are triangles.) Selecting a station activates its station page.

Click station for more information about the station.



Selected Event Summary

The graph below plots the maximum vibration during the selected event period (blast or ambient) recorded at each and every seismograph station along the easting positions. The vertical axis gives the maximum vibration in peak particle velocity (PPV) in units of inches per second (in/sec). If the maximum vibration level at a station is below 0.01 in/sec, the marker is a v-shaped triangle at 0.01 in/sec. (Light-gray stems indicate ambient-vibration level. Black stems indicate blast-vibration level. Dark-gray stems indicate predicted blast-vibration level.)

The table below lists the date, time, and level of the maximum-vibration recording at each station for the selected event.

Station	Date	Time	Max PPV (in / second)	Vibration Type
---------	------	------	--------------------------	----------------