



Department of the Army
New York District Corps of Engineers
Jacob K. Javits Federal Building
26 Federal Plaza
New York, NY 10278-0090

Week of March 17 – March 23, 2014

The following pages display the results from the USACE-NYD real-time website for the week of Monday, March 17, through Sunday, March 23, 2014.

There were eight blasts this week in the S-AK-3 project area. We were informed that AK-250 was split into two blasts after a hole failed to fire.

We recorded vibrations in the S-AK-3 project area. The maximum vibration recorded was 0.0475 in/s recorded at NYCT on March 21. Table 1 summarizes the blasts this week.

Page 2 summarizes dredge locations for this week. The map shows the week's last dredge locations by colored symbols, connected by colored lines to the week's previous locations marked by gray symbols. Drillboat Apache operated in S-AK-3 all week.

The remaining odd pages display the home page showing the maximum vibration measured in all of the stations for most recent event for each day:

- March 17
- March 18
- March 19
- March 20
- March 21
- March 22
- March 23

The even pages show the maximum vibration observed at each station along easting for each event.

The results for this week show the measurements at the three active stations: New York Container Terminal (NYCT), Elizabethport, and Elizabeth Marina. The station locations are on each page.

Ground vibrations at NYCT were all below 0.0475 in/s. Vibrations at Elizabethport were all below 0.112 in/s. Vibrations at Elizabeth Marina were all below 0.0462 in/s. All blast vibration measurements are below the contract vibration limits for this site.

Table 1. Blast Summary for this week

Blast	Date & Time EST/EDT of blast	Distance from blast to e4s stations (feet)	e4s Max. vibration (in/s)
AK-248	2014-03-17 15:00	4,340 - 5,880	0.0231
AK-249	2014-03-18 09:45	4,320 - 5,850	0.0219
AK-250A	2014-03-19 09:16	4,490 - 6,030	0.0262
AK-250B	2014-03-19 09:41	4,490 - 6,030	0.0119
AK-251	2014-03-20 10:20	4,470 - 6,000	0.0250
AK-252	2014-03-21 09:19	4,660 - 6,200	0.0294
AK-253	2014-03-21 17:00	4,730 - 6,260	0.0125
AK-254	2014-03-22 17:00	4,630 - 6,150	0.0212



Dredge Position Summary

This page summarizes dredge positions for the week. The Arthur Kill contract area is mapped with a top-of-rock map. The navigation grid is superimposed. The map shows dredge locations by colored symbols, connected by colored lines to the week's past locations marked by gray symbols. The map resets beginning the Monday of each week.

Mousing over a dredge location produces a pop-up text box giving dredge name, date of location, and easting and northing coordinates of the location in the NAD83 New Jersey State Plane coordinate system.

Click on a station for station information.




[Todays Dredge Position](#)

[Latest Week's
Dredge Position Summary](#)

[Project
History List](#)

The table below lists the date, name, easting, northing, and notes for the week's dredge positions. The position is the last reported dredge position of the day.

Dredge Location Table				
Date	Dredge Name	Easting	Northing	Notes
2014-03-23 Sun				No Activity
2014-03-22 Sat	Drillboat Apache	 576910	657448	
2014-03-21 Fri	Drillboat Apache	 576796	657477	
2014-03-20 Thu	Drillboat Apache	 577049	657518	
2014-03-19 Wed	Drillboat Apache	 576993	657598	
2014-03-18 Tue	Drillboat Apache	 577154	657679	
2014-03-17 Mon	Drillboat Apache	 577092	657704	
<div><div> e4sciences Earthworks, LLC</div><div>27 Glen Road, Sandy Hook, CT 06482</div><div>www.e4sciences.com</div></div>				



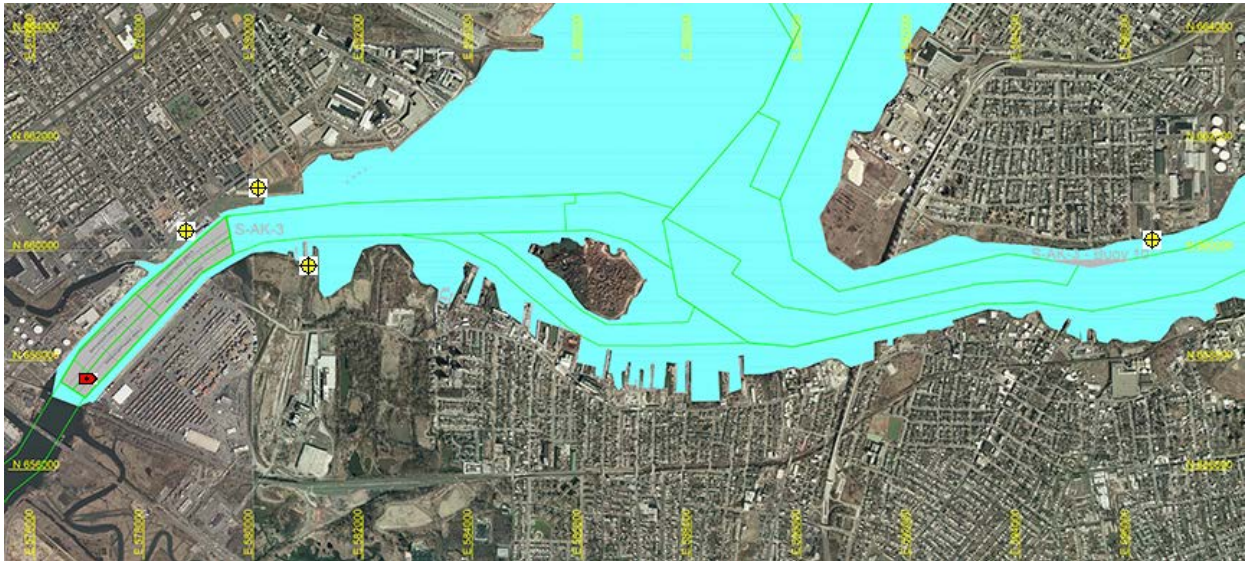
Arthur Kill Blast Vibration Summary

This site summarizes the measured ground vibrations in northwest Staten Island, from rock blasting in the Arthur Kill and other possible sources. The site is updated daily. The data are intended for the sole use of the US Army Corps of Engineers - New York District, for managing and monitoring the performance of NYNJ Harbor Deepening Project Contract in Arthur Kill starting 25 July 2011.

This page represents the most recent observations.

The Arthur Kill contract area is mapped below in light gray. The navigation grid is superimposed. Today's dredge locations are marked by colored symbols, connected by colored lines to this week's past locations marked by gray symbols. The drilling and blasting barge is marked in red. The easting and northing map coordinates in the New Jersey State Plane coordinate system are in yellow. The locations of active seismograph stations are marked by yellow station symbols. (e4sciences stations are circles. CDB stations are triangles.) Selecting a station activates its station page.

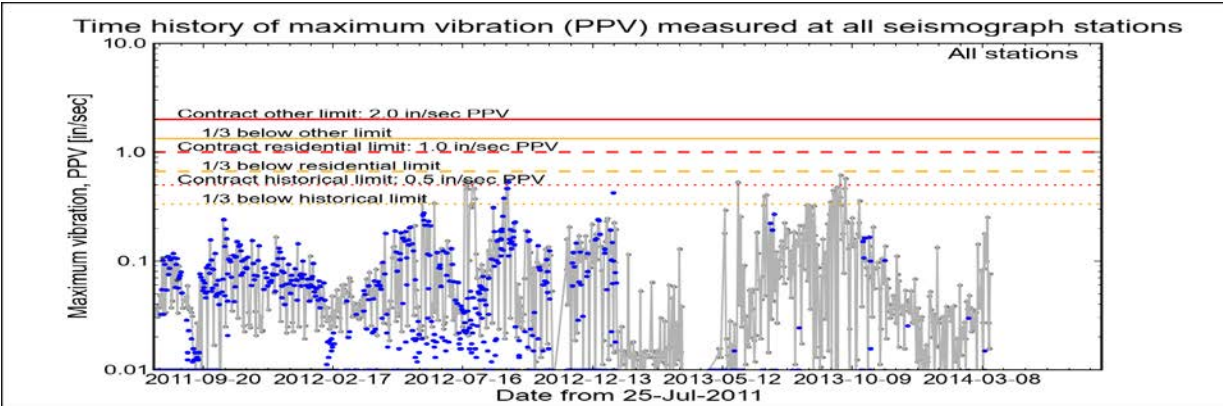
Click station for station information or click channel for event summary.



Latest Event Summary

The graph below is a plot of the maximum vibration recorded by any and all of the numerous seismograph stations during the current observation event (ambient or blast). The horizontal axis gives the date from the start of the project on 25 July 2011. The vertical axis gives the maximum vibration in peak particle velocity (PPV) in units of inches per second (in/sec). The red curves show the project's contract limits; the orange curves show one-third (1/3) below these contract limits. (The light gray curve is ambient-vibration level. The blue dots are blast-vibration levels. The dark gray dots are predicted blast-vibration levels.)

Date and time of last reading: Mon 17-Mar-2014 14:51:36



(Click on graph or [here](#) for larger view)

The table below lists the date, time, level, and station of the maximum-vibration recording for each and every event. Selecting an event activates its event page.

Blast ID	Date	Time	Max PPV (in / second)	Max PPV Station
Ambient	Mon 17-Mar-2014	14:51:36	0.0762	Elizabeth Marina
Ambient	Sun 16-Mar-2014	13:47:35	0.0156	Elizabeth Marina
Ambient	Sat 15-Mar-2014	14:47:35	0.0269	Elizabeth Marina
Ambient	Fri 14-Mar-2014	17:14:29	0.2520	Elizabeth Marina
Ambient	Thu 13-Mar-2014	13:33:07	0.1000	Elizabeth Marina
Ambient	Wed 12-Mar-2014	15:28:53	0.1740	Elizabeth Marina





Arthur Kill Blasting Event Summary

This page summarizes measurements of ground vibrations for the selected event. This page displays the maximum vibration recorded at each and every seismograph station during this event.

The Arthur Kill contract area is mapped below with a top-of-rock map. Today's dredge locations are marked by colored symbols, connected by colored lines to this week's past locations marked by gray symbols. The drilling and blasting barge location is marked in red. The easting and northing map coordinates in the New Jersey State Plane coordinate system are in yellow. The locations of active seismograph stations are marked by yellow station symbols. (*e4sciences stations are circles. CDB stations are triangles.*) Selecting a station activates its station page.

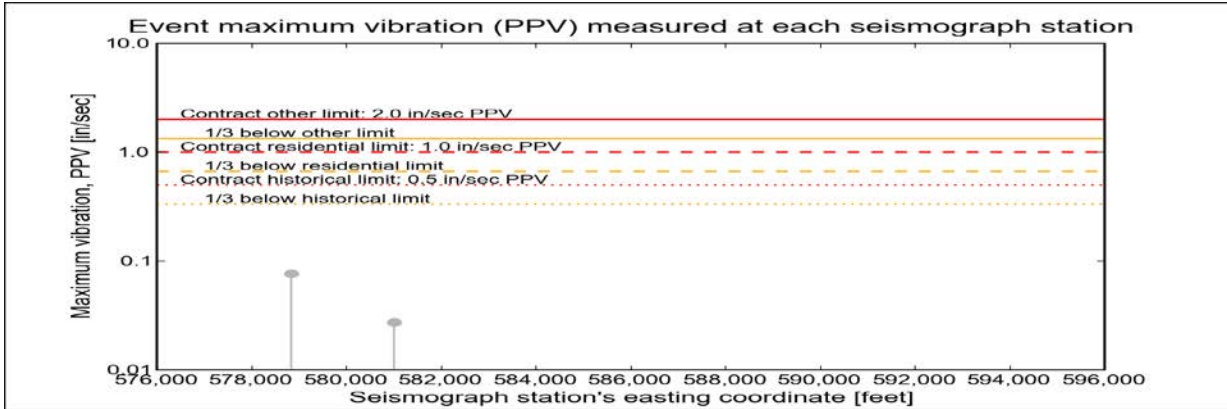
Click station for more information about the station.



Selected Event Summary

The graph below plots the maximum vibration during the selected event period (blast or ambient) recorded at each and every seismograph station along the easting positions. The vertical axis gives the maximum vibration in peak particle velocity (PPV) in units of inches per second (in/sec). If the maximum vibration level at a station is below 0.01 in/sec, the marker is a v-shaped triangle at 0.01 in/sec. (*Light-gray stems indicate ambient-vibration level. Black stems indicate blast-vibration level. Dark-gray stems indicate predicted blast-vibration level.*)

Date of reading: Mon 17-Mar-2014



(Click on graph or [here](#) for larger view)

The table below lists the date, time, and level of the maximum-vibration recording at each station for the selected event.

Station	Date	Time	Max PPV (in / second)	Vibration Type
Elizabeth Marina - e4s010	Mon 17-Mar-2014	14:51:36	0.0762	Ambient
NYCT - e4s008	Mon 17-Mar-2014	12:07:45	0.0275	Ambient





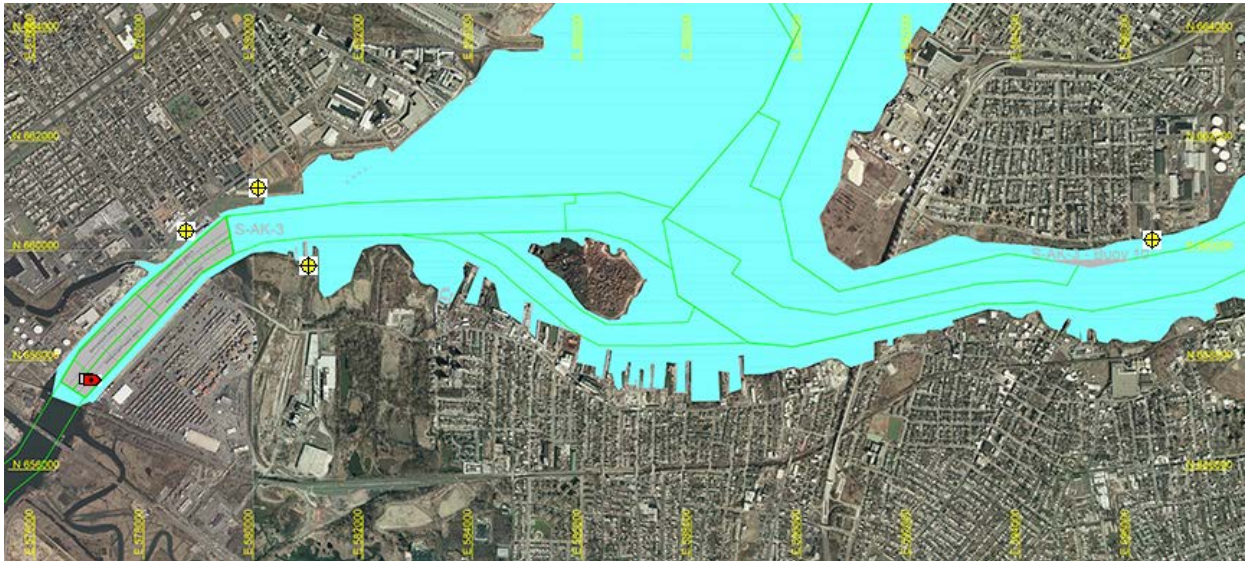
Arthur Kill Blast Vibration Summary

This site summarizes the measured ground vibrations in northwest Staten Island, from rock blasting in the Arthur Kill and other possible sources. The site is updated daily. The data are intended for the sole use of the US Army Corps of Engineers - New York District, for managing and monitoring the performance of NYNJ Harbor Deepening Project Contract in Arthur Kill starting 25 July 2011.

This page represents the most recent observations.

The Arthur Kill contract area is mapped below in light gray. The navigation grid is superimposed. Today's dredge locations are marked by colored symbols, connected by colored lines to this week's past locations marked by gray symbols. The drilling and blasting barge is marked in red. The easting and northing map coordinates in the New Jersey State Plane coordinate system are in yellow. The locations of active seismograph stations are marked by yellow station symbols. (e4sciences stations are circles. CDB stations are triangles.) Selecting a station activates its station page.

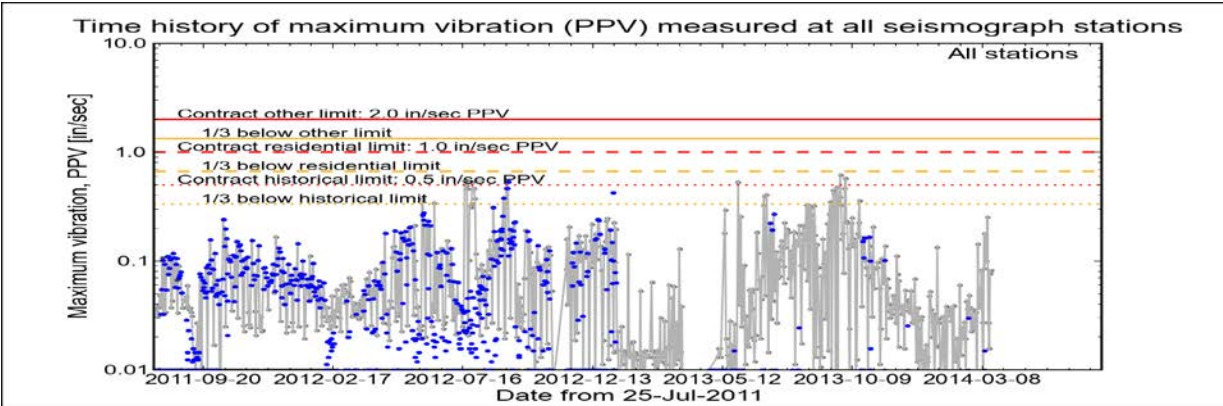
Click station for station information or click channel for event summary.



Latest Event Summary

The graph below is a plot of the maximum vibration recorded by any and all of the numerous seismograph stations during the current observation event (ambient or blast). The horizontal axis gives the date from the start of the project on 25 July 2011. The vertical axis gives the maximum vibration in peak particle velocity (PPV) in units of inches per second (in/sec). The red curves show the project's contract limits; the orange curves show one-third (1/3) below these contract limits. (The light gray curve is ambient-vibration level. The blue dots are blast-vibration levels. The dark gray dots are predicted blast-vibration levels.)

Date and time of last reading: Tue 18-Mar-2014 12:18:49



(Click on graph or [here](#) for larger view)

The table below lists the date, time, level, and station of the maximum-vibration recording for each and every event. Selecting an event activates its event page.

Blast ID	Date	Time	Max PPV (in / second)	Max PPV Station
Ambient	Tue 18-Mar-2014	12:18:49	0.0825	Elizabeth Marina
Ambient	Mon 17-Mar-2014	14:51:36	0.0762	Elizabeth Marina
Ambient	Sun 16-Mar-2014	13:47:35	0.0156	Elizabeth Marina
Ambient	Sat 15-Mar-2014	14:47:35	0.0269	Elizabeth Marina
Ambient	Fri 14-Mar-2014	17:14:29	0.2520	Elizabeth Marina
Ambient	Thu 13-Mar-2014	13:33:07	0.1000	Elizabeth Marina





Arthur Kill Blasting Event Summary

This page summarizes measurements of ground vibrations for the selected event. This page displays the maximum vibration recorded at each and every seismograph station during this event.

The Arthur Kill contract area is mapped below with a top-of-rock map. Today's dredge locations are marked by colored symbols, connected by colored lines to this week's past locations marked by gray symbols. The drilling and blasting barge location is marked in red. The easting and northing map coordinates in the New Jersey State Plane coordinate system are in yellow. The locations of active seismograph stations are marked by yellow station symbols. (*e4sciences stations are circles. CDB stations are triangles.*) Selecting a station activates its station page.

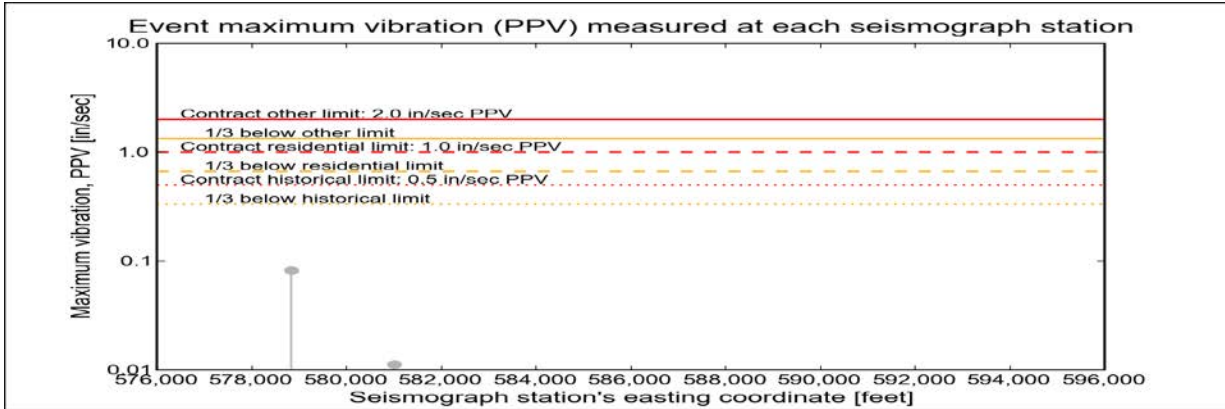
Click station for more information about the station.



Selected Event Summary

The graph below plots the maximum vibration during the selected event period (blast or ambient) recorded at each and every seismograph station along the easting positions. The vertical axis gives the maximum vibration in peak particle velocity (PPV) in units of inches per second (in/sec). If the maximum vibration level at a station is below 0.01 in/sec, the marker is a v-shaped triangle at 0.01 in/sec. (*Light-gray stems indicate ambient-vibration level. Black stems indicate blast-vibration level. Dark-gray stems indicate predicted blast-vibration level.*)

Date of reading: Tue 18-Mar-2014



(Click on graph or [here](#) for larger view)

The table below lists the date, time, and level of the maximum-vibration recording at each station for the selected event.

Station	Date	Time	Max PPV (in / second)	Vibration Type
Elizabeth Marina - e4s010	Tue 18-Mar-2014	12:18:49	0.0825	Ambient
NYCT - e4s008	Tue 18-Mar-2014	13:37:44	0.0112	Ambient





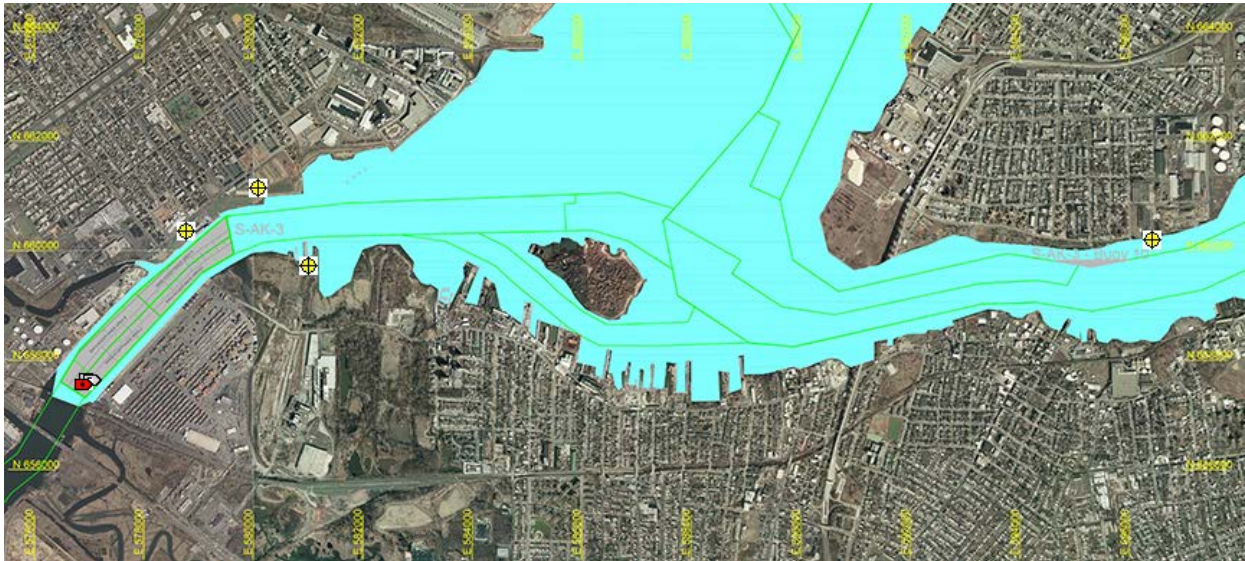
Arthur Kill Blast Vibration Summary

This site summarizes the measured ground vibrations in northwest Staten Island, from rock blasting in the Arthur Kill and other possible sources. The site is updated daily. The data are intended for the sole use of the US Army Corps of Engineers - New York District, for managing and monitoring the performance of NYNJ Harbor Deepening Project Contract in Arthur Kill starting 25 July 2011.

This page represents the most recent observations.

The Arthur Kill contract area is mapped below in light gray. The navigation grid is superimposed. Today's dredge locations are marked by colored symbols, connected by colored lines to this week's past locations marked by gray symbols. The drilling and blasting barge is marked in red. The easting and northing map coordinates in the New Jersey State Plane coordinate system are in yellow. The locations of active seismograph stations are marked by yellow station symbols. (e4sciences stations are circles. CDB stations are triangles.) Selecting a station activates its station page.

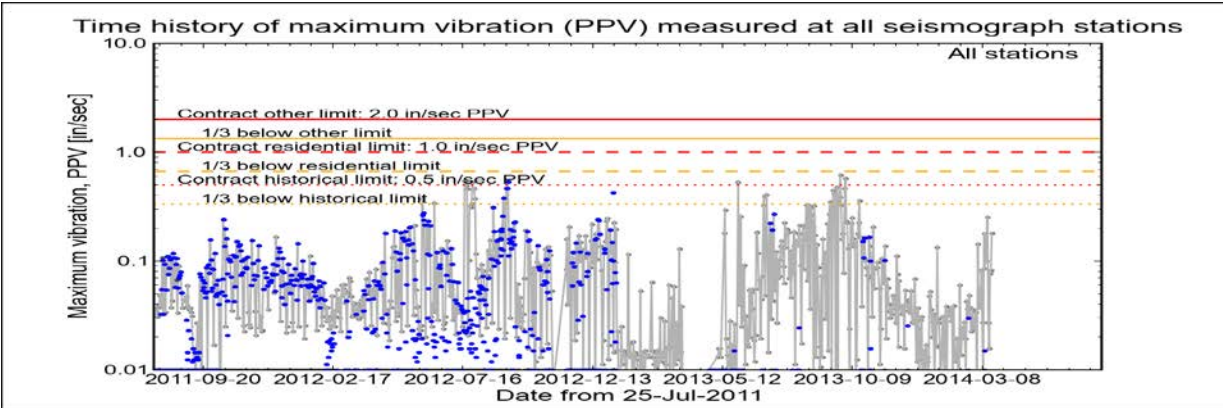
Click station for station information or click channel for event summary.



Latest Event Summary

The graph below is a plot of the maximum vibration recorded by any and all of the numerous seismograph stations during the current observation event (ambient or blast). The horizontal axis gives the date from the start of the project on 25 July 2011. The vertical axis gives the maximum vibration in peak particle velocity (PPV) in units of inches per second (in/sec). The red curves show the project's contract limits; the orange curves show one-third (1/3) below these contract limits. (The light gray curve is ambient-vibration level. The blue dots are blast-vibration levels. The dark gray dots are predicted blast-vibration levels.)

Date and time of last reading: Wed 19-Mar-2014 15:31:48



(Click on graph or [here](#) for larger view)

The table below lists the date, time, level, and station of the maximum-vibration recording for each and every event. Selecting an event activates its event page.

Blast ID	Date	Time	Max PPV (in / second)	Max PPV Station
Ambient	Wed 19-Mar-2014	15:31:48	0.1810	Elizabeth Marina
Ambient	Tue 18-Mar-2014	12:18:49	0.0825	Elizabeth Marina
Ambient	Mon 17-Mar-2014	14:51:36	0.0762	Elizabeth Marina
Ambient	Sun 16-Mar-2014	13:47:35	0.0156	Elizabeth Marina
Ambient	Sat 15-Mar-2014	14:47:35	0.0269	Elizabeth Marina
Ambient	Fri 14-Mar-2014	17:14:29	0.2520	Elizabeth Marina





Arthur Kill Blasting Event Summary

This page summarizes measurements of ground vibrations for the selected event. This page displays the maximum vibration recorded at each and every seismograph station during this event.

The Arthur Kill contract area is mapped below with a top-of-rock map. Today's dredge locations are marked by colored symbols, connected by colored lines to this week's past locations marked by gray symbols. The drilling and blasting barge location is marked in red. The easting and northing map coordinates in the New Jersey State Plane coordinate system are in yellow. The locations of active seismograph stations are marked by yellow station symbols. (*e4sciences stations are circles. CDB stations are triangles.*) Selecting a station activates its station page.

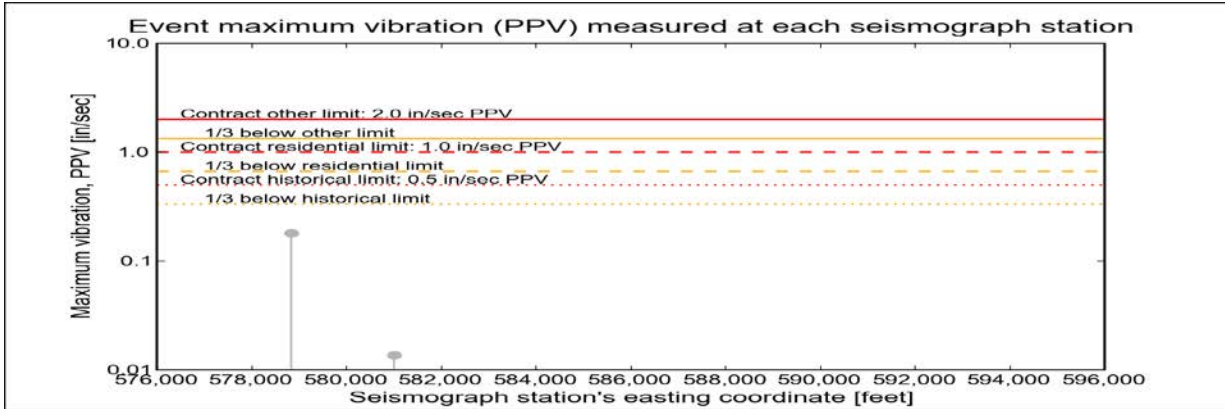
Click station for more information about the station.



Selected Event Summary

The graph below plots the maximum vibration during the selected event period (blast or ambient) recorded at each and every seismograph station along the easting positions. The vertical axis gives the maximum vibration in peak particle velocity (PPV) in units of inches per second (in/sec). If the maximum vibration level at a station is below 0.01 in/sec, the marker is a v-shaped triangle at 0.01 in/sec. (*Light-gray stems indicate ambient-vibration level. Black stems indicate blast-vibration level. Dark-gray stems indicate predicted blast-vibration level.*)

Date of reading: Wed 19-Mar-2014



(Click on graph or [here](#) for larger view)

The table below lists the date, time, and level of the maximum-vibration recording at each station for the selected event.

Station	Date	Time	Max PPV (in / second)	Vibration Type
Elizabeth Marina - e4s010	Wed 19-Mar-2014	15:31:48	0.181	Ambient
NYCT - e4s008	Wed 19-Mar-2014	13:07:44	0.0137	Ambient





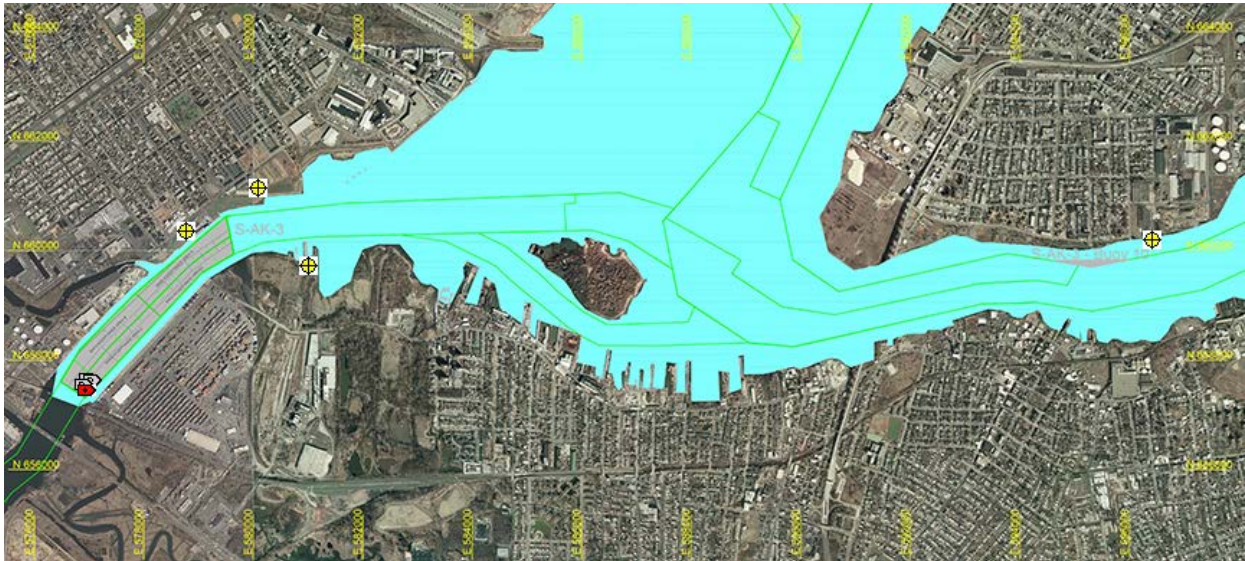
Arthur Kill Blast Vibration Summary

This site summarizes the measured ground vibrations in northwest Staten Island, from rock blasting in the Arthur Kill and other possible sources. The site is updated daily. The data are intended for the sole use of the US Army Corps of Engineers - New York District, for managing and monitoring the performance of NYNJ Harbor Deepening Project Contract in Arthur Kill starting 25 July 2011.

This page represents the most recent observations.

The Arthur Kill contract area is mapped below in light gray. The navigation grid is superimposed. Today's dredge locations are marked by colored symbols, connected by colored lines to this week's past locations marked by gray symbols. The drilling and blasting barge is marked in red. The easting and northing map coordinates in the New Jersey State Plane coordinate system are in yellow. The locations of active seismograph stations are marked by yellow station symbols. (e4sciences stations are circles. CDB stations are triangles.) Selecting a station activates its station page.

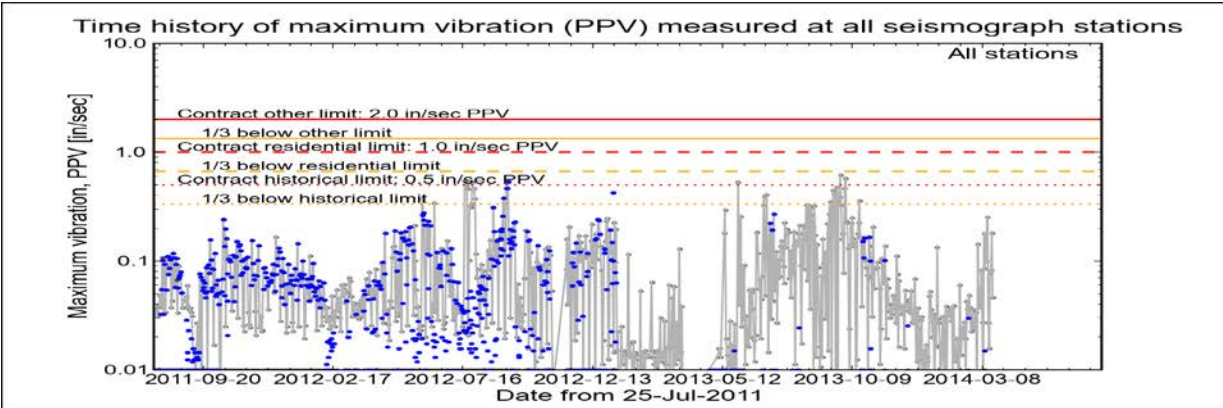
Click station for station information or click channel for event summary.



Latest Event Summary

The graph below is a plot of the maximum vibration recorded by any and all of the numerous seismograph stations during the current observation event (ambient or blast). The horizontal axis gives the date from the start of the project on 25 July 2011. The vertical axis gives the maximum vibration in peak particle velocity (PPV) in units of inches per second (in/sec). The red curves show the project's contract limits; the orange curves show one-third (1/3) below these contract limits. (The light gray curve is ambient-vibration level. The blue dots are blast-vibration levels. The dark gray dots are predicted blast-vibration levels.)

Date and time of last reading: Thu 20-Mar-2014 16:09:23



(Click on graph or [here](#) for larger view)

The table below lists the date, time, level, and station of the maximum-vibration recording for each and every event. Selecting an event activates its event page.

Blast ID	Date	Time	Max PPV (in / second)	Max PPV Station
Ambient	Thu 20-Mar-2014	16:09:23	0.0462	Elizabeth Marina
Ambient	Wed 19-Mar-2014	15:31:48	0.1810	Elizabeth Marina
Ambient	Tue 18-Mar-2014	12:18:49	0.0825	Elizabeth Marina
Ambient	Mon 17-Mar-2014	14:51:36	0.0762	Elizabeth Marina
Ambient	Sun 16-Mar-2014	13:47:35	0.0156	Elizabeth Marina
Ambient	Sat 15-Mar-2014	14:47:35	0.0269	Elizabeth Marina





Arthur Kill Blasting Event Summary

This page summarizes measurements of ground vibrations for the selected event. This page displays the maximum vibration recorded at each and every seismograph station during this event.

The Arthur Kill contract area is mapped below with a top-of-rock map. Today's dredge locations are marked by colored symbols, connected by colored lines to this week's past locations marked by gray symbols. The drilling and blasting barge location is marked in red. The easting and northing map coordinates in the New Jersey State Plane coordinate system are in yellow. The locations of active seismograph stations are marked by yellow station symbols. (*e4sciences stations are circles. CDB stations are triangles.*) Selecting a station activates its station page.

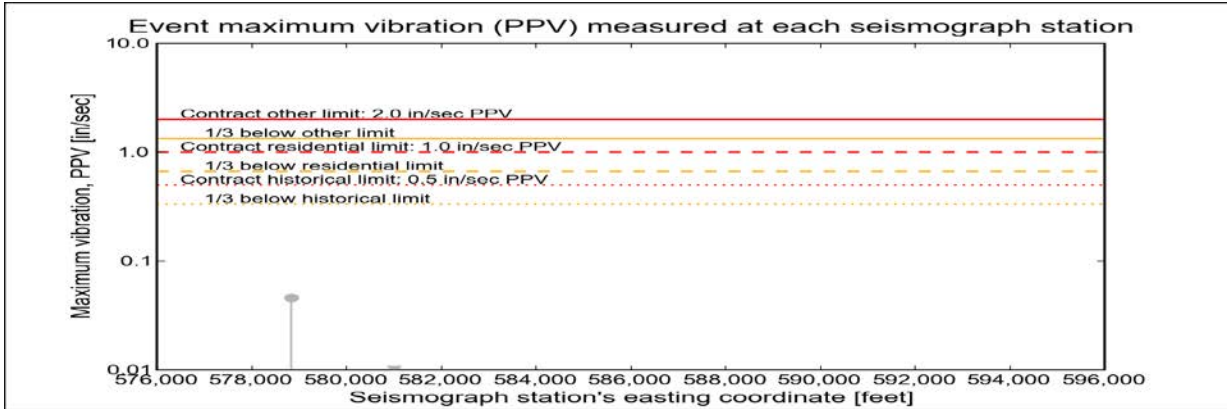
Click station for more information about the station.



Selected Event Summary

The graph below plots the maximum vibration during the selected event period (blast or ambient) recorded at each and every seismograph station along the easting positions. The vertical axis gives the maximum vibration in peak particle velocity (PPV) in units of inches per second (in/sec). If the maximum vibration level at a station is below 0.01 in/sec, the marker is a v-shaped triangle at 0.01 in/sec. (*Light-gray stems indicate ambient-vibration level. Black stems indicate blast-vibration level. Dark-gray stems indicate predicted blast-vibration level.*)

Date of reading: Thu 20-Mar-2014



(Click on graph or [here](#) for larger view)

The table below lists the date, time, and level of the maximum-vibration recording at each station for the selected event.

Station	Date	Time	Max PPV (in / second)	Vibration Type
Elizabeth Marina - e4s010	Thu 20-Mar-2014	16:09:23	0.0462	Ambient
NYCT - e4s008	Thu 20-Mar-2014	14:08:05	0.00875	Ambient





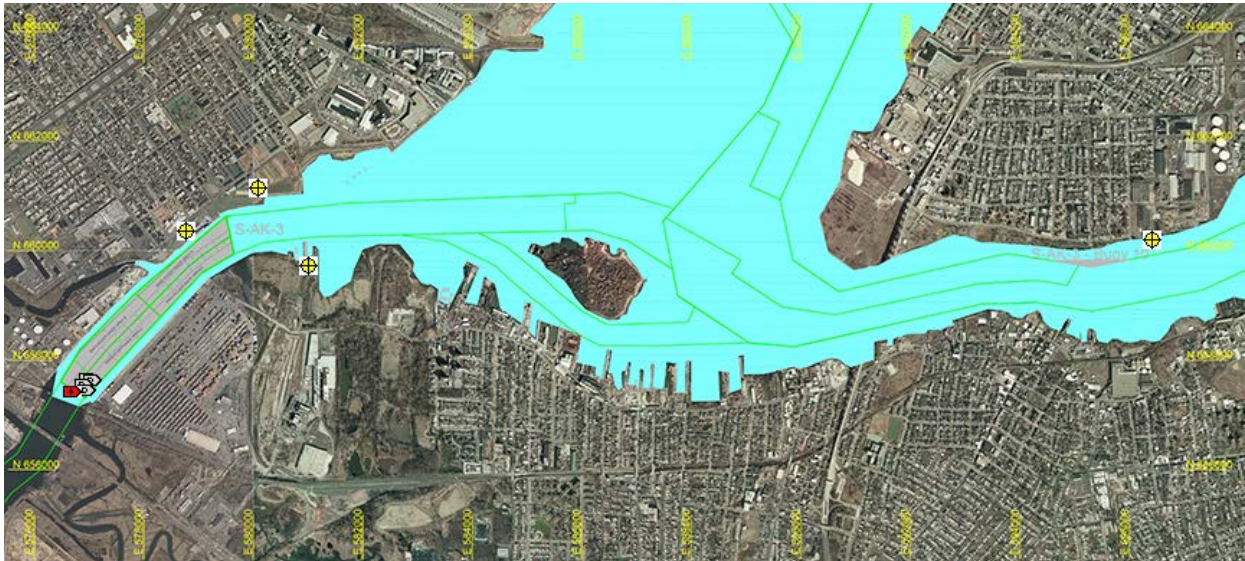
Arthur Kill Blast Vibration Summary

This site summarizes the measured ground vibrations in northwest Staten Island, from rock blasting in the Arthur Kill and other possible sources. The site is updated daily. The data are intended for the sole use of the US Army Corps of Engineers - New York District, for managing and monitoring the performance of NYNJ Harbor Deepening Project Contract in Arthur Kill starting 25 July 2011.

This page represents the most recent observations.

The Arthur Kill contract area is mapped below in light gray. The navigation grid is superimposed. Today's dredge locations are marked by colored symbols, connected by colored lines to this week's past locations marked by gray symbols. The drilling and blasting barge is marked in red. The easting and northing map coordinates in the New Jersey State Plane coordinate system are in yellow. The locations of active seismograph stations are marked by yellow station symbols. (e4sciences stations are circles. CDB stations are triangles.) Selecting a station activates its station page.

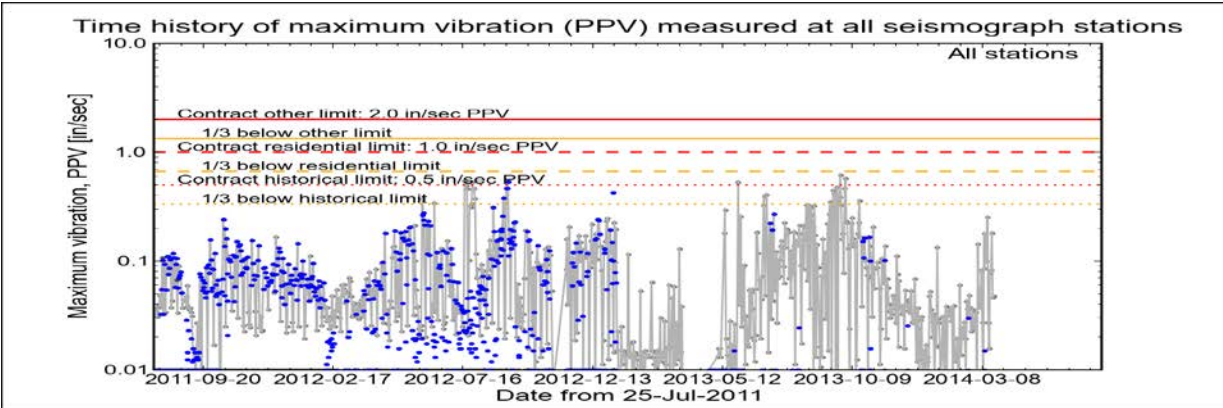
Click station for station information or click channel for event summary.



Latest Event Summary

The graph below is a plot of the maximum vibration recorded by any and all of the numerous seismograph stations during the current observation event (ambient or blast). The horizontal axis gives the date from the start of the project on 25 July 2011. The vertical axis gives the maximum vibration in peak particle velocity (PPV) in units of inches per second (in/sec). The red curves show the project's contract limits; the orange curves show one-third (1/3) below these contract limits. (The light gray curve is ambient-vibration level. The blue dots are blast-vibration levels. The dark gray dots are predicted blast-vibration levels.)

Date and time of last reading: Fri 21-Mar-2014 16:37:28



(Click on graph or [here](#) for larger view)

The table below lists the date, time, level, and station of the maximum-vibration recording for each and every event. Selecting an event activates its event page.

Blast ID	Date	Time	Max PPV (in / second)	Max PPV Station
Ambient	Fri 21-Mar-2014	16:37:28	0.0475	NYCT
Ambient	Thu 20-Mar-2014	16:09:23	0.0462	Elizabeth Marina
Ambient	Wed 19-Mar-2014	15:31:48	0.1810	Elizabeth Marina
Ambient	Tue 18-Mar-2014	12:18:49	0.0825	Elizabeth Marina
Ambient	Mon 17-Mar-2014	14:51:36	0.0762	Elizabeth Marina
Ambient	Sun 16-Mar-2014	13:47:35	0.0156	Elizabeth Marina





Arthur Kill Blasting Event Summary

This page summarizes measurements of ground vibrations for the selected event. This page displays the maximum vibration recorded at each and every seismograph station during this event.

The Arthur Kill contract area is mapped below with a top-of-rock map. Today's dredge locations are marked by colored symbols, connected by colored lines to this week's past locations marked by gray symbols. The drilling and blasting barge location is marked in red. The easting and northing map coordinates in the New Jersey State Plane coordinate system are in yellow. The locations of active seismograph stations are marked by yellow station symbols. (*e4sciences stations are circles. CDB stations are triangles.*) Selecting a station activates its station page.

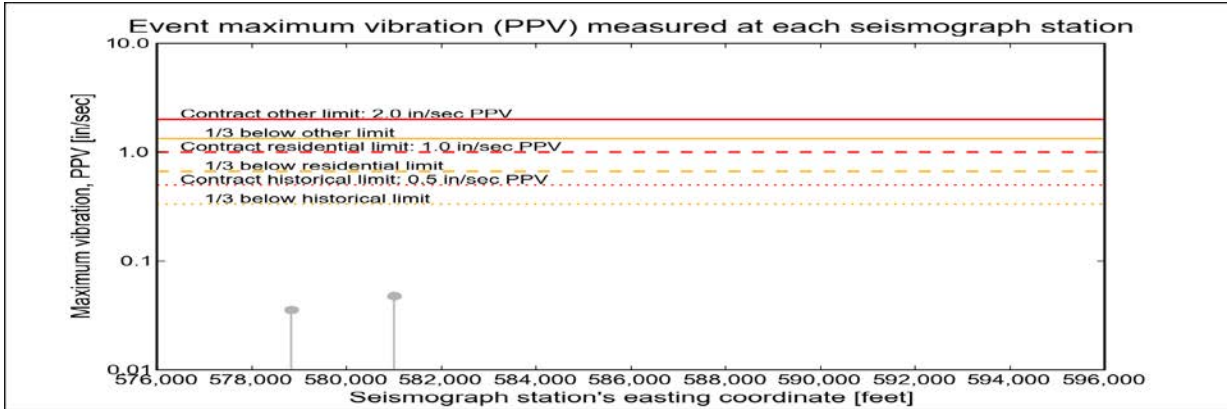
Click station for more information about the station.



Selected Event Summary

The graph below plots the maximum vibration during the selected event period (blast or ambient) recorded at each and every seismograph station along the easting positions. The vertical axis gives the maximum vibration in peak particle velocity (PPV) in units of inches per second (in/sec). If the maximum vibration level at a station is below 0.01 in/sec, the marker is a v-shaped triangle at 0.01 in/sec. (*Light-gray stems indicate ambient-vibration level. Black stems indicate blast-vibration level. Dark-gray stems indicate predicted blast-vibration level.*)

Date of reading: Fri 21-Mar-2014



(Click on graph or [here](#) for larger view)

The table below lists the date, time, and level of the maximum-vibration recording at each station for the selected event.

Station	Date	Time	Max PPV (in / second)	Vibration Type
Elizabeth Marina - e4s010	Fri 21-Mar-2014	13:17:35	0.0356	Ambient
NYCT - e4s008	Fri 21-Mar-2014	16:37:28	0.0475	Ambient





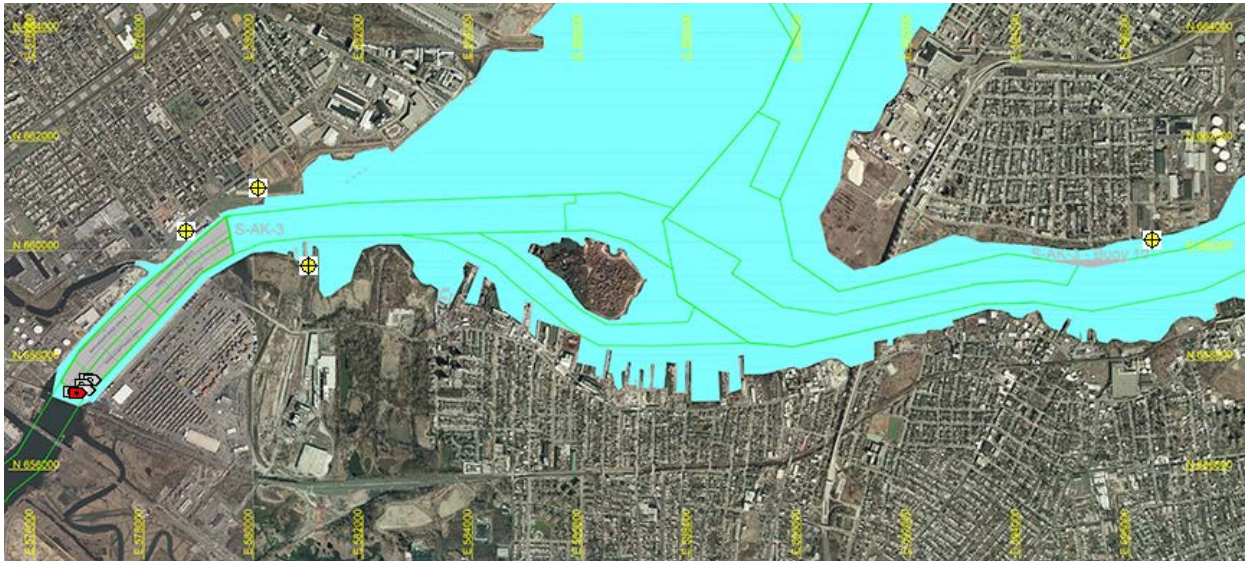
Arthur Kill Blast Vibration Summary

This site summarizes the measured ground vibrations in northwest Staten Island, from rock blasting in the Arthur Kill and other possible sources. The site is updated daily. The data are intended for the sole use of the US Army Corps of Engineers - New York District, for managing and monitoring the performance of NYNJ Harbor Deepening Project Contract in Arthur Kill starting 25 July 2011.

This page represents the most recent observations.

The Arthur Kill contract area is mapped below in light gray. The navigation grid is superimposed. Today's dredge locations are marked by colored symbols, connected by colored lines to this week's past locations marked by gray symbols. The drilling and blasting barge is marked in red. The easting and northing map coordinates in the New Jersey State Plane coordinate system are in yellow. The locations of active seismograph stations are marked by yellow station symbols. (e4sciences stations are circles. CDB stations are triangles.) Selecting a station activates its station page.

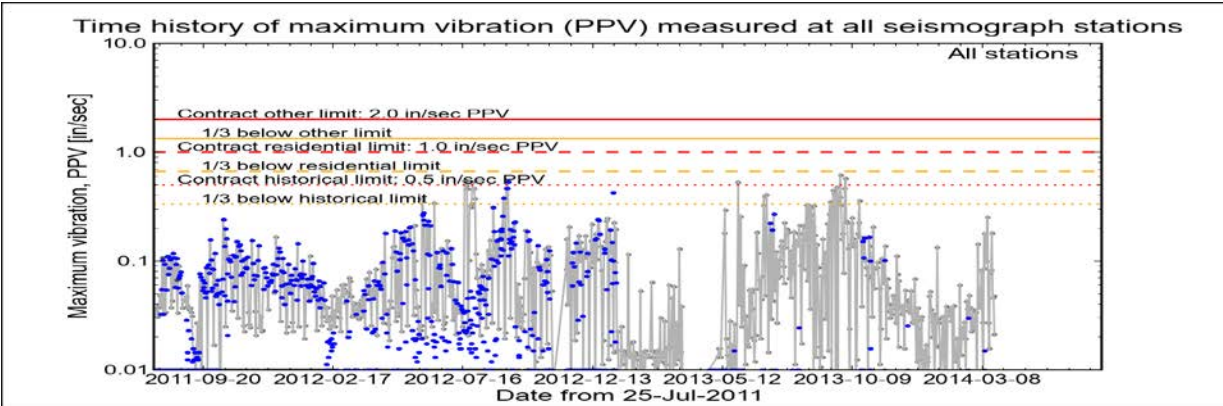
Click station for station information or click channel for event summary.



Latest Event Summary

The graph below is a plot of the maximum vibration recorded by any and all of the numerous seismograph stations during the current observation event (ambient or blast). The horizontal axis gives the date from the start of the project on 25 July 2011. The vertical axis gives the maximum vibration in peak particle velocity (PPV) in units of inches per second (in/sec). The red curves show the project's contract limits; the orange curves show one-third (1/3) below these contract limits. (The light gray curve is ambient-vibration level. The blue dots are blast-vibration levels. The dark gray dots are predicted blast-vibration levels.)

Date and time of last reading: Sat 22-Mar-2014 20:47:36



(Click on graph or [here](#) for larger view)

The table below lists the date, time, level, and station of the maximum-vibration recording for each and every event. Selecting an event activates its event page.

Blast ID	Date	Time	Max PPV (in / second)	Max PPV Station
Ambient	Sat 22-Mar-2014	20:47:36	0.0212	Elizabeth Marina
Ambient	Fri 21-Mar-2014	16:37:28	0.0475	NYCT
Ambient	Thu 20-Mar-2014	16:09:23	0.0462	Elizabeth Marina
Ambient	Wed 19-Mar-2014	15:31:48	0.1810	Elizabeth Marina
Ambient	Tue 18-Mar-2014	12:18:49	0.0825	Elizabeth Marina
Ambient	Mon 17-Mar-2014	14:51:36	0.0762	Elizabeth Marina





Arthur Kill Blasting Event Summary

This page summarizes measurements of ground vibrations for the selected event. This page displays the maximum vibration recorded at each and every seismograph station during this event.

The Arthur Kill contract area is mapped below with a top-of-rock map. Today's dredge locations are marked by colored symbols, connected by colored lines to this week's past locations marked by gray symbols. The drilling and blasting barge location is marked in red. The easting and northing map coordinates in the New Jersey State Plane coordinate system are in yellow. The locations of active seismograph stations are marked by yellow station symbols. (*e4sciences stations are circles. CDB stations are triangles.*) Selecting a station activates its station page.

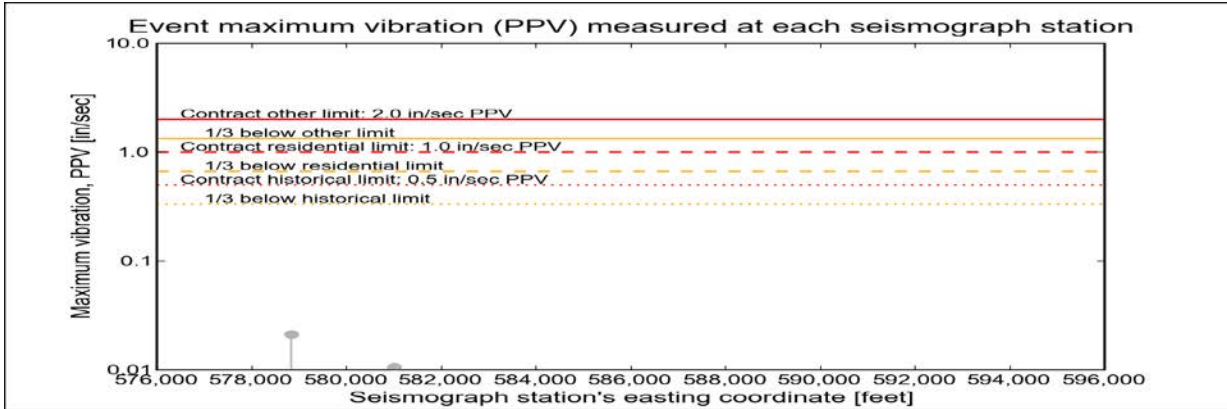
Click station for more information about the station.



Selected Event Summary

The graph below plots the maximum vibration during the selected event period (blast or ambient) recorded at each and every seismograph station along the easting positions. The vertical axis gives the maximum vibration in peak particle velocity (PPV) in units of inches per second (in/sec). If the maximum vibration level at a station is below 0.01 in/sec, the marker is a v-shaped triangle at 0.01 in/sec. (*Light-gray stems indicate ambient-vibration level. Black stems indicate blast-vibration level. Dark-gray stems indicate predicted blast-vibration level.*)

Date of reading: Sat 22-Mar-2014



(Click on graph or [here](#) for larger view)

The table below lists the date, time, and level of the maximum-vibration recording at each station for the selected event.

Station	Date	Time	Max PPV (in / second)	Vibration Type
Elizabeth Marina - e4s010	Sat 22-Mar-2014	20:47:36	0.0212	Ambient
NYCT - e4s008	Sat 22-Mar-2014	20:53:04	0.0106	Ambient





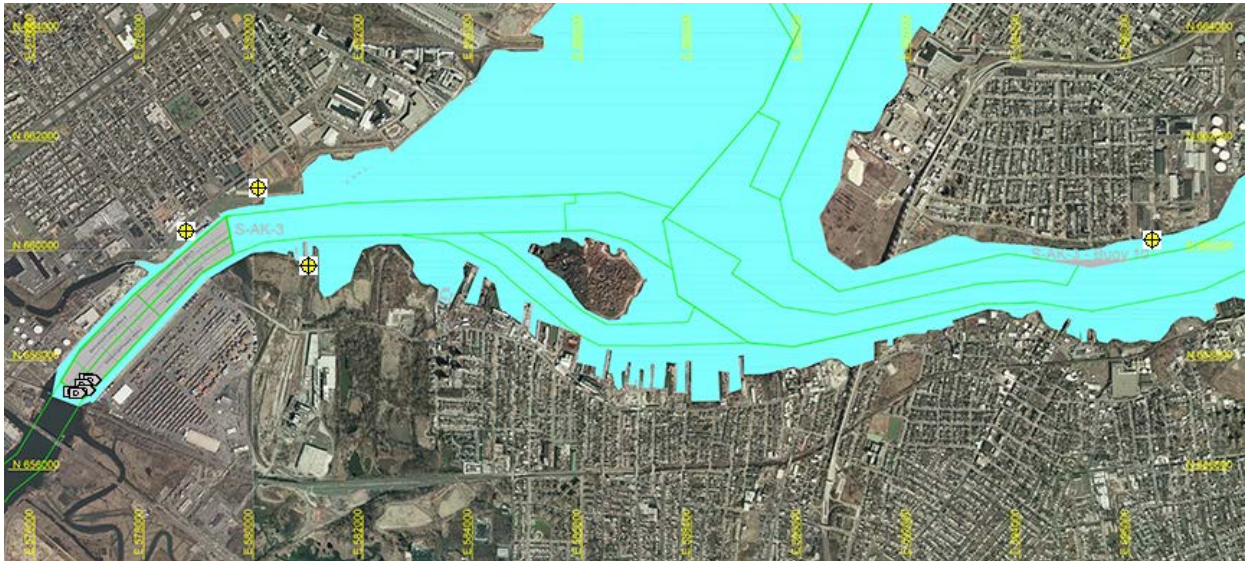
Arthur Kill Blast Vibration Summary

This site summarizes the measured ground vibrations in northwest Staten Island, from rock blasting in the Arthur Kill and other possible sources. The site is updated daily. The data are intended for the sole use of the US Army Corps of Engineers - New York District, for managing and monitoring the performance of NYNJ Harbor Deepening Project Contract in Arthur Kill starting 25 July 2011.

This page represents the most recent observations.

The Arthur Kill contract area is mapped below in light gray. The navigation grid is superimposed. Today's dredge locations are marked by colored symbols, connected by colored lines to this week's past locations marked by gray symbols. The drilling and blasting barge is marked in red. The easting and northing map coordinates in the New Jersey State Plane coordinate system are in yellow. The locations of active seismograph stations are marked by yellow station symbols. (e4sciences stations are circles. CDB stations are triangles.) Selecting a station activates its station page.

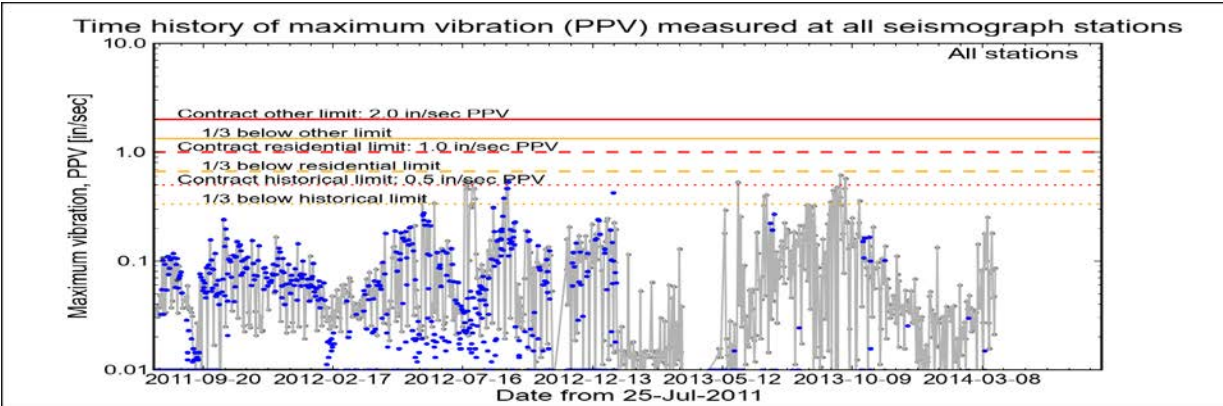
Click station for station information or click channel for event summary.



Latest Event Summary

The graph below is a plot of the maximum vibration recorded by any and all of the numerous seismograph stations during the current observation event (ambient or blast). The horizontal axis gives the date from the start of the project on 25 July 2011. The vertical axis gives the maximum vibration in peak particle velocity (PPV) in units of inches per second (in/sec). The red curves show the project's contract limits; the orange curves show one-third (1/3) below these contract limits. (The light gray curve is ambient-vibration level. The blue dots are blast-vibration levels. The dark gray dots are predicted blast-vibration levels.)

Date and time of last reading: Sun 23-Mar-2014 04:02:37



(Click on graph or [here](#) for larger view)

The table below lists the date, time, level, and station of the maximum-vibration recording for each and every event. Selecting an event activates its event page.

Blast ID	Date	Time	Max PPV (in / second)	Max PPV Station
Ambient	Sun 23-Mar-2014	04:02:37	0.0862	Elizabeth Marina
Ambient	Sat 22-Mar-2014	20:47:36	0.0212	Elizabeth Marina
Ambient	Fri 21-Mar-2014	16:37:28	0.0475	NYCT
Ambient	Thu 20-Mar-2014	16:09:23	0.0462	Elizabeth Marina
Ambient	Wed 19-Mar-2014	15:31:48	0.1810	Elizabeth Marina
Ambient	Tue 18-Mar-2014	12:18:49	0.0825	Elizabeth Marina





Arthur Kill Blasting Event Summary

This page summarizes measurements of ground vibrations for the selected event. This page displays the maximum vibration recorded at each and every seismograph station during this event.

The Arthur Kill contract area is mapped below with a top-of-rock map. Today's dredge locations are marked by colored symbols, connected by colored lines to this week's past locations marked by gray symbols. The drilling and blasting barge location is marked in red. The easting and northing map coordinates in the New Jersey State Plane coordinate system are in yellow. The locations of active seismograph stations are marked by yellow station symbols. (*e4sciences stations are circles. CDB stations are triangles.*) Selecting a station activates its station page.

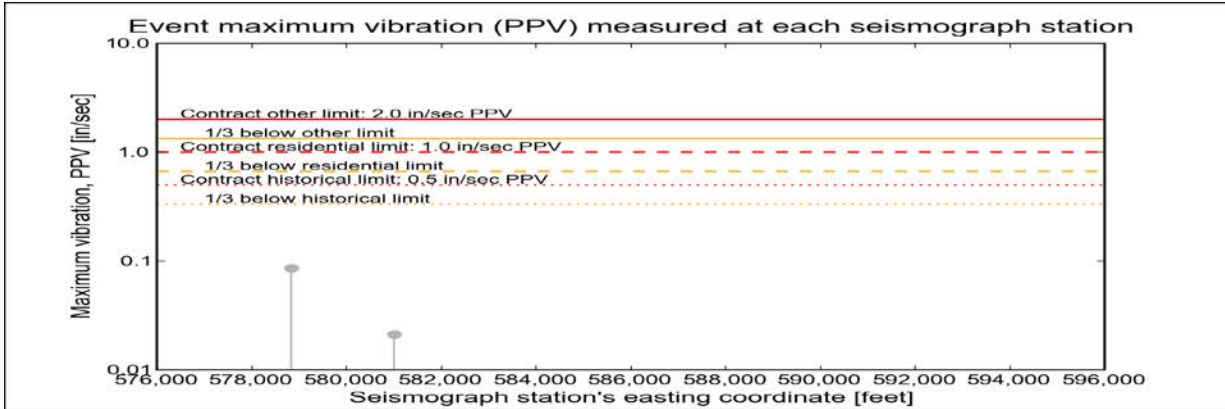
Click station for more information about the station.



Selected Event Summary

The graph below plots the maximum vibration during the selected event period (blast or ambient) recorded at each and every seismograph station along the easting positions. The vertical axis gives the maximum vibration in peak particle velocity (PPV) in units of inches per second (in/sec). If the maximum vibration level at a station is below 0.01 in/sec, the marker is a v-shaped triangle at 0.01 in/sec. (*Light-gray stems indicate ambient-vibration level. Black stems indicate blast-vibration level. Dark-gray stems indicate predicted blast-vibration level.*)

Date of reading: Sun 23-Mar-2014



(Click on graph or [here](#) for larger view)

The table below lists the date, time, and level of the maximum-vibration recording at each station for the selected event.

Station	Date	Time	Max PPV (in / second)	Vibration Type
Elizabeth Marina - e4s010	Sun 23-Mar-2014	04:02:37	0.0862	Ambient
NYCT - e4s008	Sun 23-Mar-2014	18:07:43	0.0212	Ambient

