



Department of the Army  
New York District Corps of Engineers  
Jacob K. Javits Federal Building  
26 Federal Plaza  
New York, NY 10278-0090

## Week of December 02 – December 08, 2013

The following pages display the results from the USACE-NYD real-time website for the week of Monday, December 02, through Sunday, December 08, 2013.

There were 7 blasts this week in the S-AK-3 project area.

We recorded vibrations in S-AK-3 project area. The maximum vibration recorded was 0.0656 in/s recorded at Elizabeth Marina on December 02. Table 1 summarizes the blasts this week.

Page 2 summarizes dredge locations for this week. The map shows the week's last dredge locations by colored symbols, connected by colored lines to the week's previous locations marked by gray symbols. Drillboat Apache and operated in S-AK-3 all week.

The remaining odd pages display the home page showing the maximum vibration measured in all of the stations for the most recent event for each day:

- December 02
- December 03
- December 04
- December 05
- December 06
- December 07
- December 08

The even pages show the maximum vibration observed at each station along easting for each event.

The results for this week show the measurements at the three active stations: New York Container Terminal (NYCT), Elizabethport, and Elizabeth Marina. The station locations are on each page.

Ground vibrations at NYCT were all below 0.035 in/s. Vibrations at Elizabethport were all below 0.040 in/s. Vibrations at Elizabeth Marina were all below 0.070 in/s. All blast vibration measurements are below the contract vibration limits for this site.

**Table 1.** Blast Summary for this week

Blast	Date & Time EST/EDT of blast	Distance from blast to e4s stations (feet)	e4s Max. vibration (in/s)
AK-134	2013-12-02 13:01	0,770 - 2,780	0.0656
AK-135	2013-12-03 09:03	1,530 - 2,890	0.0369
AK-136	2013-12-04 14:14	1,640 - 3,020	0.0381
AK-137	2013-12-05 10:58	1,790 - 3,170	0.0325
AK-138	2013-12-06 09:58	1,920 - 3,300	0.0331
AK-139	2013-12-06 14:14	1,670 - 3,030	0.03
AK-140	2013-12-07 12:15	2,060 - 3,450	0.0387



US Army Corps  
of Engineers®  
New York District

Home    Event Summary    Stations:    Dredges    History    Links

Dredge Position Summary

This page summarizes dredge positions for the week. The Arthur Kill contract area is mapped with a top-of-rock map. The navigation grid is superimposed. The map shows dredge locations by colored symbols, connected by colored lines to the week's past locations marked by gray symbols. The map resets beginning the Monday of each week.

Mousing over a dredge location produces a pop-up text box giving dredge name, date of location, and easting and northing coordinates of the location in the NAD83 New Jersey State Plane coordinate system.

Click on a station for station information.



[Todays Dredge Position](#)

[Latest Week's  
Dredge Position Summary](#)

[Project  
History List](#)

The table below lists the date, name, easting, northing, and notes for the week's dredge positions. The position is the last reported dredge position of the day.

Dredge Location Table

Date	Dredge Name	Easting	Northing	Notes
2013-12-08 Sun	Drillboat Apache	577859	658239	
2013-12-07 Sat	Drillboat Apache	577750	658500	
2013-12-06 Fri	Drillboat Apache	577839	658595	
2013-12-05 Thu	Drillboat Apache	577963	658687	
2013-12-04 Wed	Drillboat Apache	578032	658815	
2013-12-03 Tue	Drillboat Apache	578209	659005	
2013-12-02 Mon	Drillboat Apache	578140	658892	



| Earthworks, LLC    27 Glen Road, Sandy Hook, CT 06482    [www.e4sciences.com](http://www.e4sciences.com)





US Army Corps  
of Engineers®  
New York District

Home    Event Summary    Stations:    Dredges    History    Links

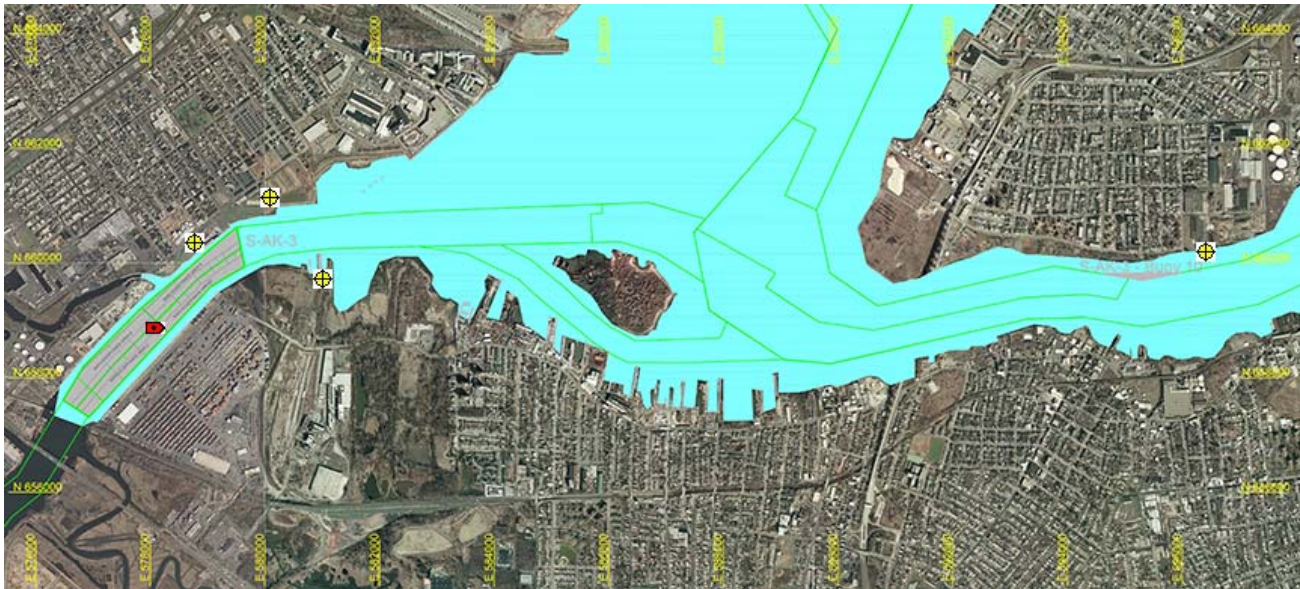
Arthur Kill Blast Vibration Summary

This site summarizes the measured ground vibrations in northwest Staten Island, from rock blasting in the Arthur Kill and other possible sources. The site is updated daily. The data are intended for the sole use of the US Army Corps of Engineers - New York District, for managing and monitoring the performance of NYNJ Harbor Deepening Project Contract in Arthur Kill starting 25 July 2011.

This page represents the most recent observations.

The Arthur Kill contract area is mapped below in light gray. The navigation grid is superimposed. Today's dredge locations are marked by colored symbols, connected by colored lines to this week's past locations marked by gray symbols. The drilling and blasting barge is marked in red. The easting and northing map coordinates in the New Jersey State Plane coordinate system are in yellow. The locations of active seismograph stations are marked by yellow station symbols. (e4sciences stations are circles. CDB stations are triangles.) Selecting a station activates its station page.

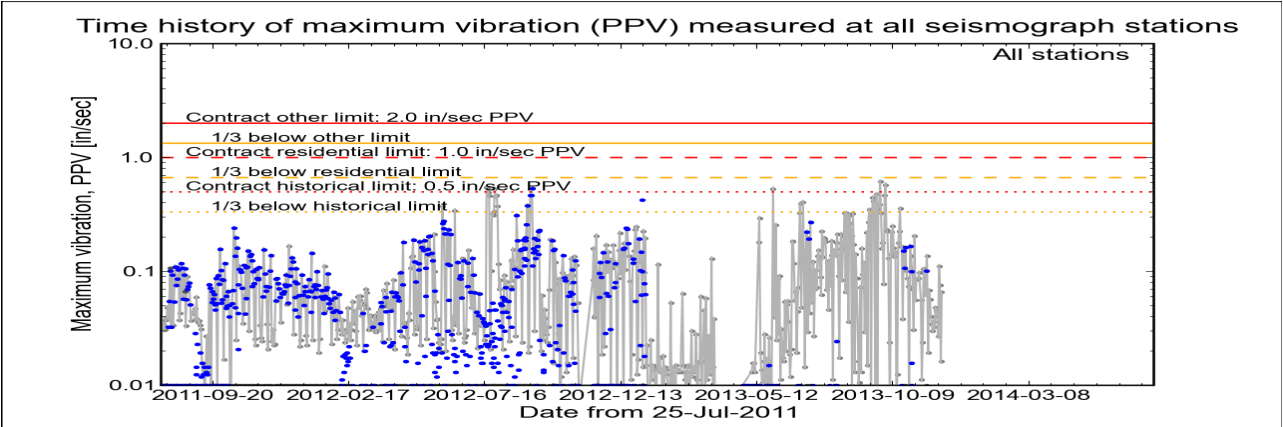
Click station for station information or click channel for event summary.



Latest Event Summary

The graph below is a plot of the maximum vibration recorded by any and all of the numerous seismograph stations during the current observation event (ambient or blast). The horizontal axis gives the date from the start of the project on 25 July 2011. The vertical axis gives the maximum vibration in peak particle velocity (PPV) in units of inches per second (in/sec). The red curves show the project's contract limits; the orange curves show one-third (1/3) below these contract limits. (The light gray curve is ambient-vibration level. The blue dots are blast-vibration levels. The dark gray dots are predicted blast-vibration levels.)

Date and time of last reading: Mon 02-Dec-2013 17:47:32



(Click on graph or [here](#) for larger view)

The table below lists the date, time, level, and station of the maximum-vibration recording for each and every event. Selecting an event activates its event page.

Blast ID	Date	Time	Max PPV (in / second)	Max PPV Station
<a href="#">Ambient</a>	<a href="#">Mon 02-Dec-2013</a>	17:47:32	0.0656	<a href="#">Elizabeth Marina</a>
<a href="#">Ambient</a>	<a href="#">Sun 01-Dec-2013</a>	10:38:01	0.0162	<a href="#">Bayonne</a>
<a href="#">Ambient</a>	<a href="#">Sat 30-Nov-2013</a>	20:02:33	0.0756	<a href="#">Elizabeth Marina</a>
<a href="#">Ambient</a>	<a href="#">Fri 29-Nov-2013</a>	19:47:35	0.1110	<a href="#">Elizabeth Marina</a>
<a href="#">Ambient</a>	<a href="#">Thu 28-Nov-2013</a>	03:40:56	0.0269	<a href="#">Bayonne</a>
<a href="#">Ambient</a>	<a href="#">Wed 27-Nov-2013</a>	18:40:00	0.0400	<a href="#">Bavonne</a>



Earthworks, LLC

27 Glen Road, Sandy Hook, CT 06482

[www.e4sciences.com](#)



US Army Corps  
of Engineers®  
New York District

Home    Event Summary    Stations:    Dredges    History    Links

Arthur Kill Blasting Event Summary

This page summarizes measurements of ground vibrations for the selected event. This page displays the maximum vibration recorded at each and every seismograph station during this event.

The Arthur Kill contract area is mapped below with a top-of-rock map. Today's dredge locations are marked by colored symbols, connected by colored lines to this week's past locations marked by gray symbols. The drilling and blasting barge location is marked in red. The easting and northing map coordinates in the New Jersey State Plane coordinate system are in yellow. The locations of active seismograph stations are marked by yellow station symbols. (e4sciences stations are circles. CDB stations are triangles.) Selecting a station activates its station page.

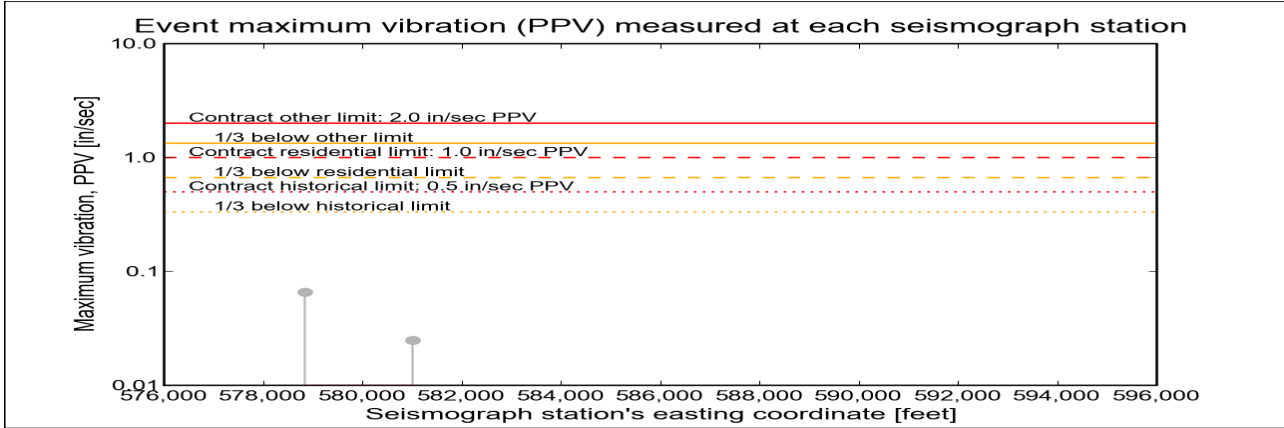
Click station for more information about the station.



Selected Event Summary

The graph below plots the maximum vibration during the selected event period (blast or ambient) recorded at each and every seismograph station along the easting positions. The vertical axis gives the maximum vibration in peak particle velocity (PPV) in units of inches per second (in/sec). If the maximum vibration level at a station is below 0.01 in/sec, the marker is a v-shaped triangle at 0.01 in/sec. (Light-gray stems indicate ambient-vibration level. Black stems indicate blast-vibration level. Dark-gray stems indicate predicted blast-vibration level.)

Date of reading: Mon 02-Dec-2013



(Click on graph or [here](#) for larger view)

The table below lists the date, time, and level of the maximum-vibration recording at each station for the selected event.

Station	Date	Time	Max PPV (in / second)	Vibration Type
<a href="#">Elizabeth Marina - e4s010</a>	Mon 02-Dec-2013	17:47:32	0.0656	<a href="#">Ambient</a>
<a href="#">NYCT - e4s008</a>	Mon 02-Dec-2013	17:52:44	0.025	<a href="#">Ambient</a>







Home    Event Summary    Stations:    Dredges    History    Links

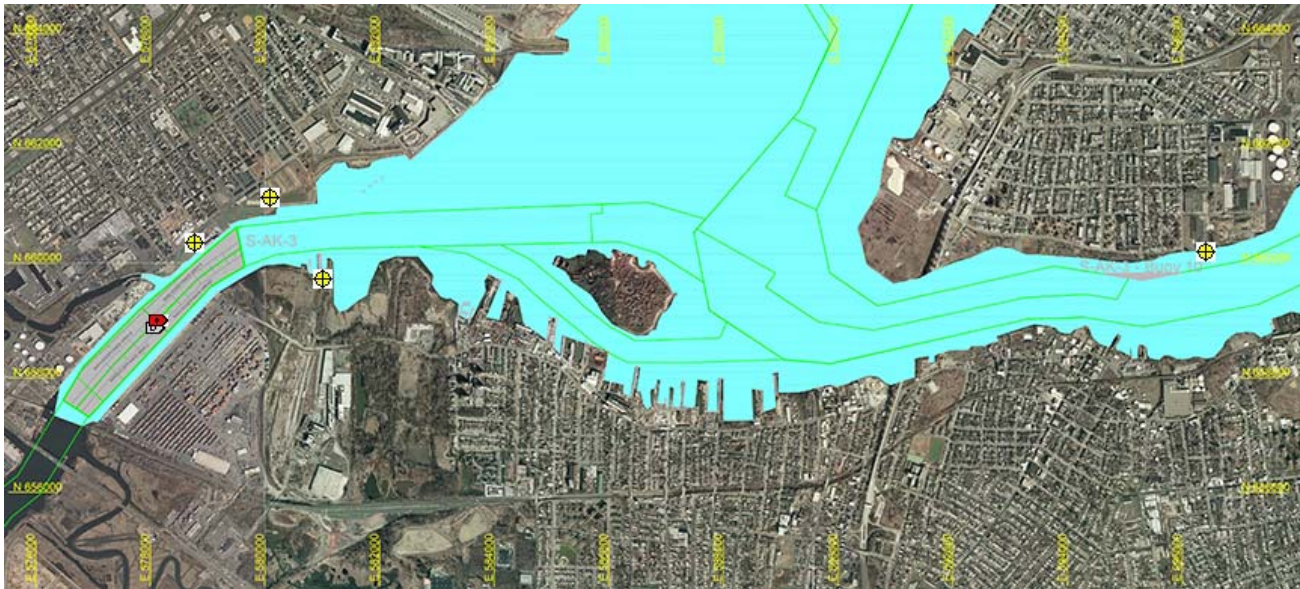
Arthur Kill Blast Vibration Summary

This site summarizes the measured ground vibrations in northwest Staten Island, from rock blasting in the Arthur Kill and other possible sources. The site is updated daily. The data are intended for the sole use of the US Army Corps of Engineers - New York District, for managing and monitoring the performance of NYNJ Harbor Deepening Project Contract in Arthur Kill starting 25 July 2011.

This page represents the most recent observations.

The Arthur Kill contract area is mapped below in light gray. The navigation grid is superimposed. Today's dredge locations are marked by colored symbols, connected by colored lines to this week's past locations marked by gray symbols. The drilling and blasting barge is marked in red. The easting and northing map coordinates in the New Jersey State Plane coordinate system are in yellow. The locations of active seismograph stations are marked by yellow station symbols. (e4sciences stations are circles. CDB stations are triangles.) Selecting a station activates its station page.

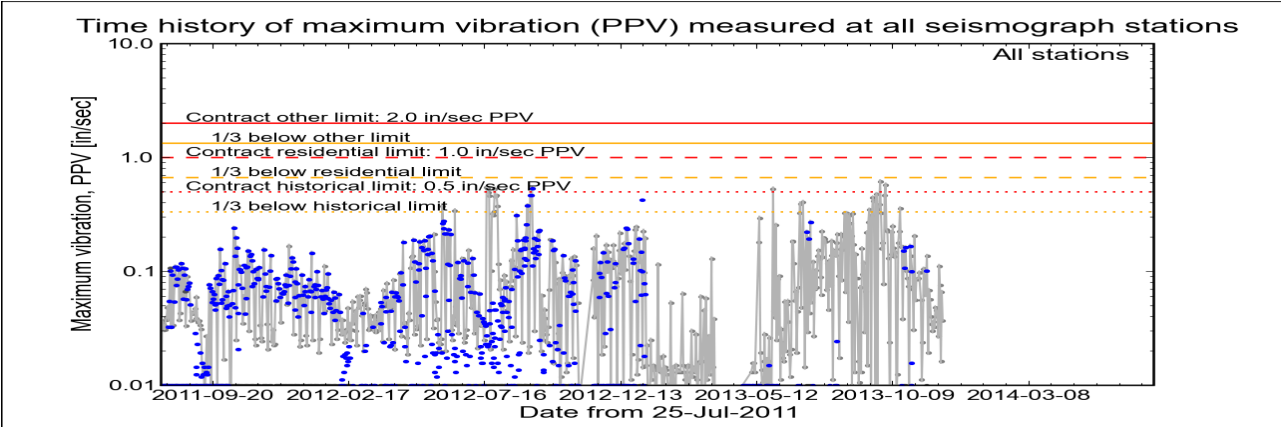
Click station for station information or click channel for event summary.



Latest Event Summary

The graph below is a plot of the maximum vibration recorded by any and all of the numerous seismograph stations during the current observation event (ambient or blast). The horizontal axis gives the date from the start of the project on 25 July 2011. The vertical axis gives the maximum vibration in peak particle velocity (PPV) in units of inches per second (in/sec). The red curves show the project's contract limits; the orange curves show one-third (1/3) below these contract limits. (The light gray curve is ambient-vibration level. The blue dots are blast-vibration levels. The dark gray dots are predicted blast-vibration levels.)

Date and time of last reading: Tue 03-Dec-2013 14:02:35



(Click on graph or [here](#) for larger view)

The table below lists the date, time, level, and station of the maximum-vibration recording for each and every event. Selecting an event activates its event page.

Blast ID	Date	Time	Max PPV (in / second)	Max PPV Station
<a href="#">Ambient</a>	<a href="#">Tue 03-Dec-2013</a>	14:02:35	0.0369	<a href="#">Elizabeth Marina</a>
<a href="#">Ambient</a>	<a href="#">Mon 02-Dec-2013</a>	17:47:32	0.0656	<a href="#">Elizabeth Marina</a>
<a href="#">Ambient</a>	<a href="#">Sun 01-Dec-2013</a>	10:38:01	0.0162	<a href="#">Bayonne</a>
<a href="#">Ambient</a>	<a href="#">Sat 30-Nov-2013</a>	20:02:33	0.0756	<a href="#">Elizabeth Marina</a>
<a href="#">Ambient</a>	<a href="#">Fri 29-Nov-2013</a>	19:47:35	0.1110	<a href="#">Elizabeth Marina</a>
<a href="#">Ambient</a>	<a href="#">Thu 28-Nov-2013</a>	03:40:56	0.0269	<a href="#">Bavonne</a>



US Army Corps  
of Engineers®  
New York District

Home   Event Summary   Stations:   Dredges   History   Links

Arthur Kill Blasting Event Summary

This page summarizes measurements of ground vibrations for the selected event. This page displays the maximum vibration recorded at each and every seismograph station during this event.

The Arthur Kill contract area is mapped below with a top-of-rock map. Today's dredge locations are marked by colored symbols, connected by colored lines to this week's past locations marked by gray symbols. The drilling and blasting barge location is marked in red. The easting and northing map coordinates in the New Jersey State Plane coordinate system are in yellow. The locations of active seismograph stations are marked by yellow station symbols. (*e4sciences stations are circles. CDB stations are triangles.*) Selecting a station activates its station page.

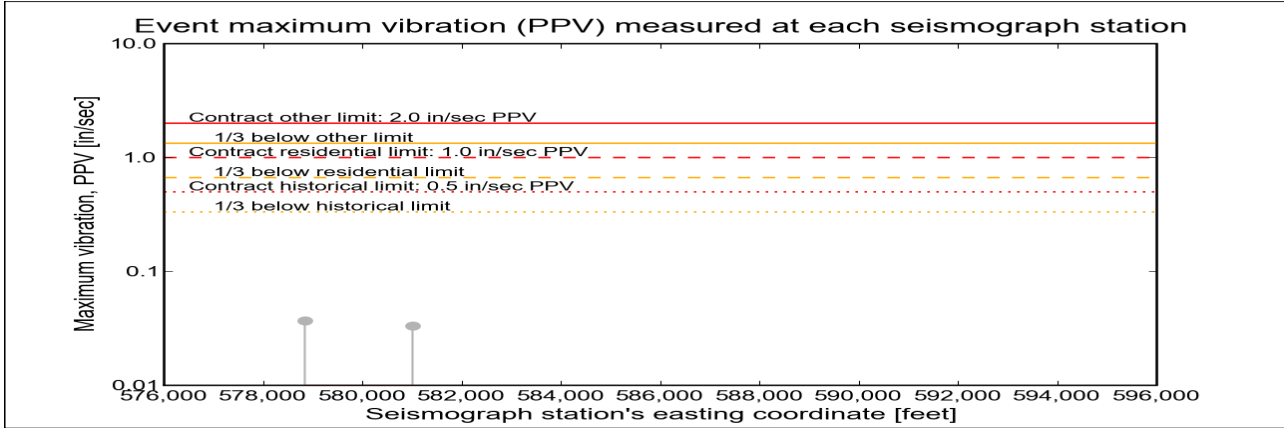
Click station for more information about the station.



Selected Event Summary

The graph below plots the maximum vibration during the selected event period (blast or ambient) recorded at each and every seismograph station along the easting positions. The vertical axis gives the maximum vibration in peak particle velocity (PPV) in units of inches per second (in/sec). If the maximum vibration level at a station is below 0.01 in/sec, the marker is a v-shaped triangle at 0.01 in/sec. (*Light-gray stems indicate ambient-vibration level. Black stems indicate blast-vibration level. Dark-gray stems indicate predicted blast-vibration level.*)

Date of reading: Tue 03-Dec-2013



(Click on graph or [here](#) for larger view)

The table below lists the date, time, and level of the maximum-vibration recording at each station for the selected event.

Station	Date	Time	Max PPV (in / second)	Vibration Type
<a href="#">Elizabeth Marina - e4s010</a>	Tue 03-Dec-2013	14:02:35	0.0369	<a href="#">Ambient</a>
<a href="#">NYCT - e4s008</a>	Tue 03-Dec-2013	12:52:44	0.0331	<a href="#">Ambient</a>



Earthworks, LLC

27 Glen Road, Sandy Hook, CT 06482

[www.e4sciences.com](http://www.e4sciences.com)





US Army Corps  
of Engineers®  
New York District

HomeEvent SummaryStations:DredgesHistoryLinks

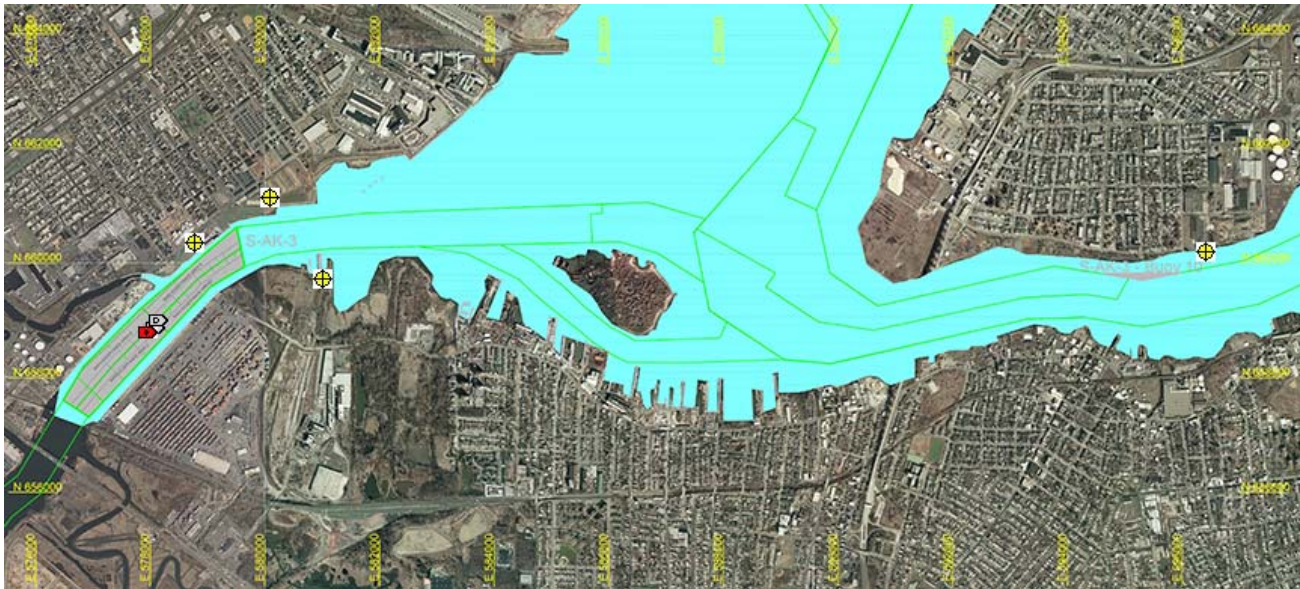
Arthur Kill Blast Vibration Summary

This site summarizes the measured ground vibrations in northwest Staten Island, from rock blasting in the Arthur Kill and other possible sources. The site is updated daily. The data are intended for the sole use of the US Army Corps of Engineers - New York District, for managing and monitoring the performance of NYNJ Harbor Deepening Project Contract in Arthur Kill starting 25 July 2011.

This page represents the most recent observations.

The Arthur Kill contract area is mapped below in light gray. The navigation grid is superimposed. Today's dredge locations are marked by colored symbols, connected by colored lines to this week's past locations marked by gray symbols. The drilling and blasting barge is marked in red. The easting and northing map coordinates in the New Jersey State Plane coordinate system are in yellow. The locations of active seismograph stations are marked by yellow station symbols. (e4sciences stations are circles. CDB stations are triangles.) Selecting a station activates its station page.

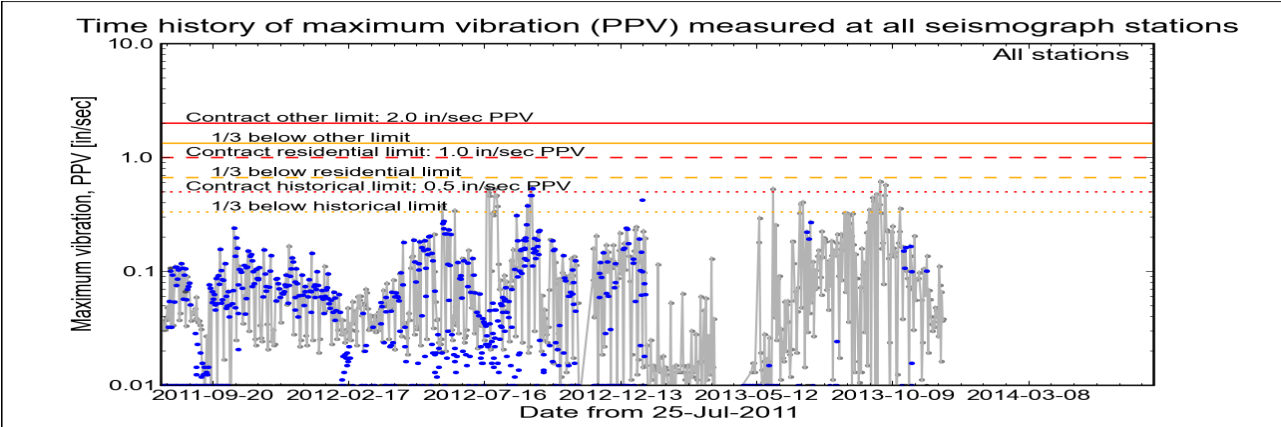
Click station for station information or click channel for event summary.



Latest Event Summary

The graph below is a plot of the maximum vibration recorded by any and all of the numerous seismograph stations during the current observation event (ambient or blast). The horizontal axis gives the date from the start of the project on 25 July 2011. The vertical axis gives the maximum vibration in peak particle velocity (PPV) in units of inches per second (in/sec). The red curves show the project's contract limits; the orange curves show one-third (1/3) below these contract limits. (The light gray curve is ambient-vibration level. The blue dots are blast-vibration levels. The dark gray dots are predicted blast-vibration levels.)

Date and time of last reading: Wed 04-Dec-2013 19:02:35



(Click on graph or [here](#) for larger view)

The table below lists the date, time, level, and station of the maximum-vibration recording for each and every event. Selecting an event activates its event page.

Blast ID	Date	Time	Max PPV (in / second)	Max PPV Station
Ambient	Wed 04-Dec-2013	19:02:35	0.0381	<a href="#">Elizabeth Marina</a>
Ambient	Tue 03-Dec-2013	14:02:35	0.0369	<a href="#">Elizabeth Marina</a>
Ambient	Mon 02-Dec-2013	17:47:32	0.0656	<a href="#">Elizabeth Marina</a>
Ambient	Sun 01-Dec-2013	10:38:01	0.0162	<a href="#">Bayonne</a>
Ambient	Sat 30-Nov-2013	20:02:33	0.0756	<a href="#">Elizabeth Marina</a>
Ambient	Fri 29-Nov-2013	19:47:35	0.1110	<a href="#">Elizabeth Marina</a>



Earthworks, LLC

27 Glen Road, Sandy Hook, CT 06482

www.e4sciences.com



US Army Corps  
of Engineers®  
New York District

Home   Event Summary   Stations:   Dredges   History   Links

Arthur Kill Blasting Event Summary

This page summarizes measurements of ground vibrations for the selected event. This page displays the maximum vibration recorded at each and every seismograph station during this event.

The Arthur Kill contract area is mapped below with a top-of-rock map. Today's dredge locations are marked by colored symbols, connected by colored lines to this week's past locations marked by gray symbols. The drilling and blasting barge location is marked in red. The easting and northing map coordinates in the New Jersey State Plane coordinate system are in yellow. The locations of active seismograph stations are marked by yellow station symbols. (*e4sciences stations are circles. CDB stations are triangles.*) Selecting a station activates its station page.

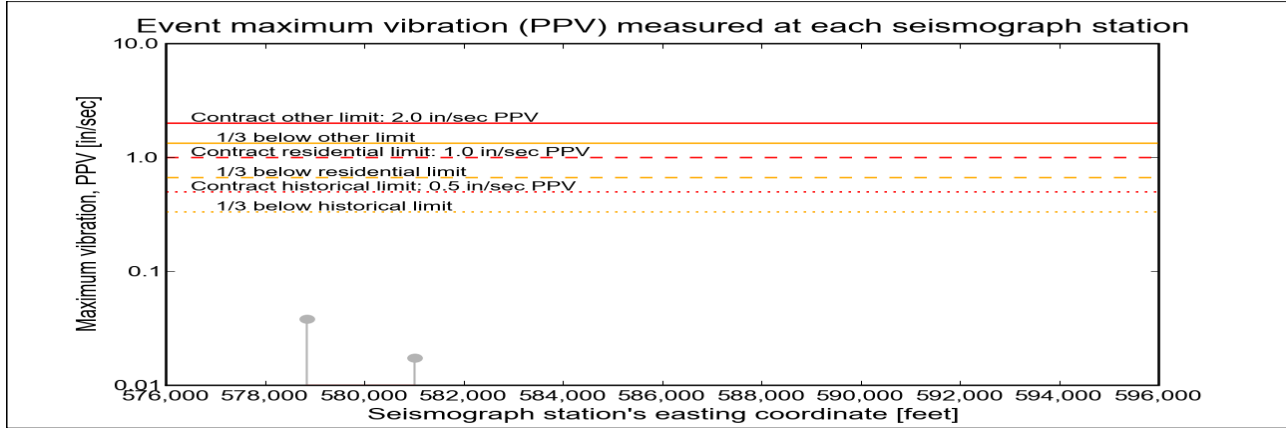
Click station for more information about the station.



Selected Event Summary

The graph below plots the maximum vibration during the selected event period (blast or ambient) recorded at each and every seismograph station along the easting positions. The vertical axis gives the maximum vibration in peak particle velocity (PPV) in units of inches per second (in/sec). If the maximum vibration level at a station is below 0.01 in/sec, the marker is a v-shaped triangle at 0.01 in/sec. (*Light-gray stems indicate ambient-vibration level. Black stems indicate blast-vibration level. Dark-gray stems indicate predicted blast-vibration level.*)

Date of reading: Wed 04-Dec-2013



(Click on graph or [here](#) for larger view)

The table below lists the date, time, and level of the maximum-vibration recording at each station for the selected event.

Station	Date	Time	Max PPV (in / second)	Vibration Type
<a href="#">Elizabeth Marina - e4s010</a>	Wed 04-Dec-2013	19:02:35	0.0381	<a href="#">Ambient</a>
<a href="#">NYCT - e4s008</a>	Wed 04-Dec-2013	19:07:46	0.0175	<a href="#">Ambient</a>



Earthworks, LLC

27 Glen Road, Sandy Hook, CT 06482

[www.e4sciences.com](http://www.e4sciences.com)





Home

Event Summary

Stations:

Dredges

History

Links

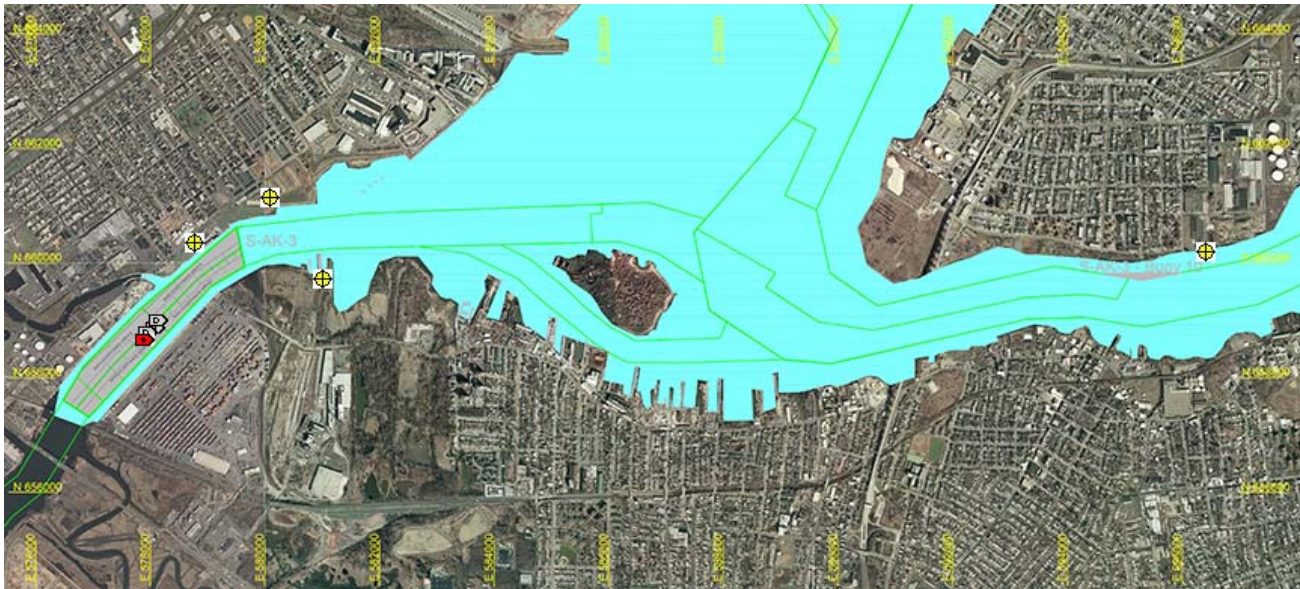
Arthur Kill Blast Vibration Summary

This site summarizes the measured ground vibrations in northwest Staten Island, from rock blasting in the Arthur Kill and other possible sources. The site is updated daily. The data are intended for the sole use of the US Army Corps of Engineers - New York District, for managing and monitoring the performance of NYNJ Harbor Deepening Project Contract in Arthur Kill starting 25 July 2011.

This page represents the most recent observations.

The Arthur Kill contract area is mapped below in light gray. The navigation grid is superimposed. Today's dredge locations are marked by colored symbols, connected by colored lines to this week's past locations marked by gray symbols. The drilling and blasting barge is marked in red. The easting and northing map coordinates in the New Jersey State Plane coordinate system are in yellow. The locations of active seismograph stations are marked by yellow station symbols. (e4sciences stations are circles. CDB stations are triangles.) Selecting a station activates its station page.

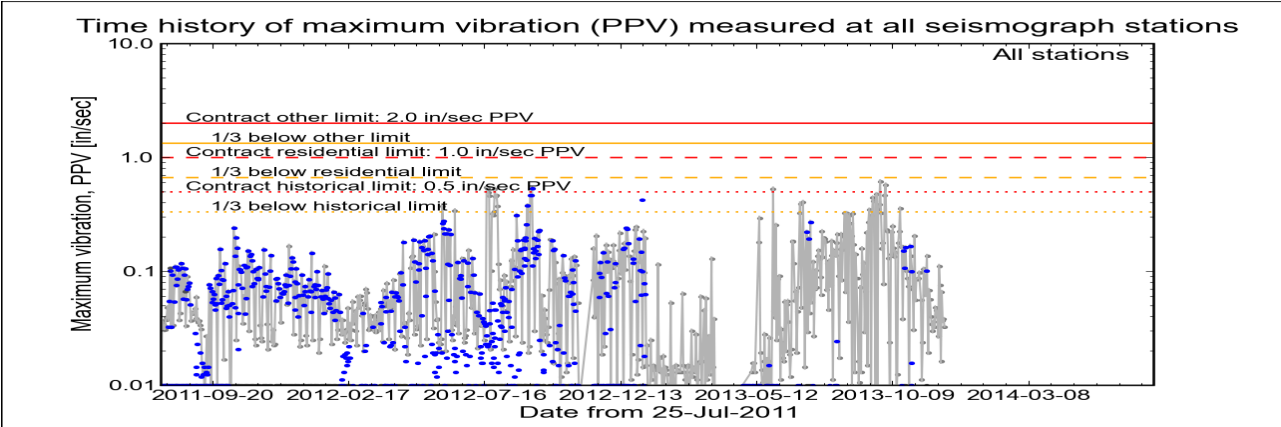
Click station for station information or click channel for event summary.



Latest Event Summary

The graph below is a plot of the maximum vibration recorded by any and all of the numerous seismograph stations during the current observation event (ambient or blast). The horizontal axis gives the date from the start of the project on 25 July 2011. The vertical axis gives the maximum vibration in peak particle velocity (PPV) in units of inches per second (in/sec). The red curves show the project's contract limits; the orange curves show one-third (1/3) below these contract limits. (The light gray curve is ambient-vibration level. The blue dots are blast-vibration levels. The dark gray dots are predicted blast-vibration levels.)

Date and time of last reading: Thu 05-Dec-2013 15:47:35



(Click on graph or [here](#) for larger view)

The table below lists the date, time, level, and station of the maximum-vibration recording for each and every event. Selecting an event activates its event page.

Blast ID	Date	Time	Max PPV (in / second)	Max PPV Station
<a href="#">Ambient</a>	<a href="#">Thu 05-Dec-2013</a>	15:47:35	0.0325	<a href="#">Elizabeth Marina</a>
<a href="#">Ambient</a>	<a href="#">Wed 04-Dec-2013</a>	19:02:35	0.0381	<a href="#">Elizabeth Marina</a>
<a href="#">Ambient</a>	<a href="#">Tue 03-Dec-2013</a>	14:02:35	0.0369	<a href="#">Elizabeth Marina</a>
<a href="#">Ambient</a>	<a href="#">Mon 02-Dec-2013</a>	17:47:32	0.0656	<a href="#">Elizabeth Marina</a>
<a href="#">Ambient</a>	<a href="#">Sun 01-Dec-2013</a>	10:38:01	0.0162	<a href="#">Bayonne</a>
<a href="#">Ambient</a>	<a href="#">Sat 30-Nov-2013</a>	20:02:33	0.0756	<a href="#">Elizabeth Marina</a>



US Army Corps  
of Engineers®  
New York District

Home    Event Summary    Stations:    Dredges    History    Links

Arthur Kill Blasting Event Summary

This page summarizes measurements of ground vibrations for the selected event. This page displays the maximum vibration recorded at each and every seismograph station during this event.

The Arthur Kill contract area is mapped below with a top-of-rock map. Today's dredge locations are marked by colored symbols, connected by colored lines to this week's past locations marked by gray symbols. The drilling and blasting barge location is marked in red. The easting and northing map coordinates in the New Jersey State Plane coordinate system are in yellow. The locations of active seismograph stations are marked by yellow station symbols. (*e4sciences stations are circles. CDB stations are triangles.*) Selecting a station activates its station page.

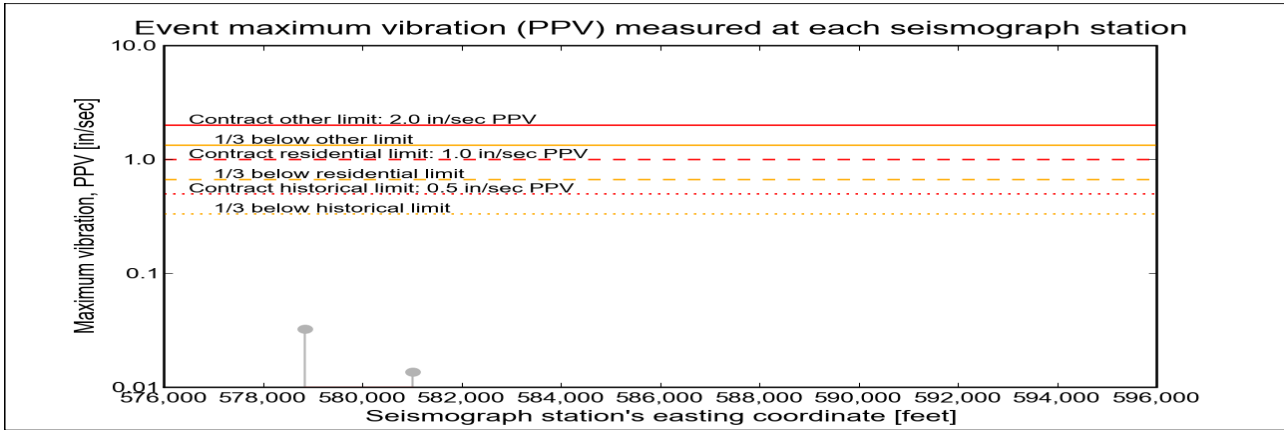
Click station for more information about the station.



Selected Event Summary

The graph below plots the maximum vibration during the selected event period (blast or ambient) recorded at each and every seismograph station along the easting positions. The vertical axis gives the maximum vibration in peak particle velocity (PPV) in units of inches per second (in/sec). If the maximum vibration level at a station is below 0.01 in/sec, the marker is a v-shaped triangle at 0.01 in/sec. (*Light-gray stems indicate ambient-vibration level. Black stems indicate blast-vibration level. Dark-gray stems indicate predicted blast-vibration level.*)

Date of reading: Thu 05-Dec-2013



(Click on graph or [here](#) for larger view)

The table below lists the date, time, and level of the maximum-vibration recording at each station for the selected event.

Station	Date	Time	Max PPV (in / second)	Vibration Type
<a href="#">Elizabeth Marina - e4s010</a>	Thu 05-Dec-2013	15:47:35	0.0325	<a href="#">Ambient</a>
<a href="#">NYCT - e4s008</a>	Thu 05-Dec-2013	15:52:44	0.0137	<a href="#">Ambient</a>



Earthworks, LLC

27 Glen Road, Sandy Hook, CT 06482

[www.e4sciences.com](http://www.e4sciences.com)





US Army Corps  
of Engineers®  
New York District

Home    Event Summary    Stations:    Dredges    History    Links

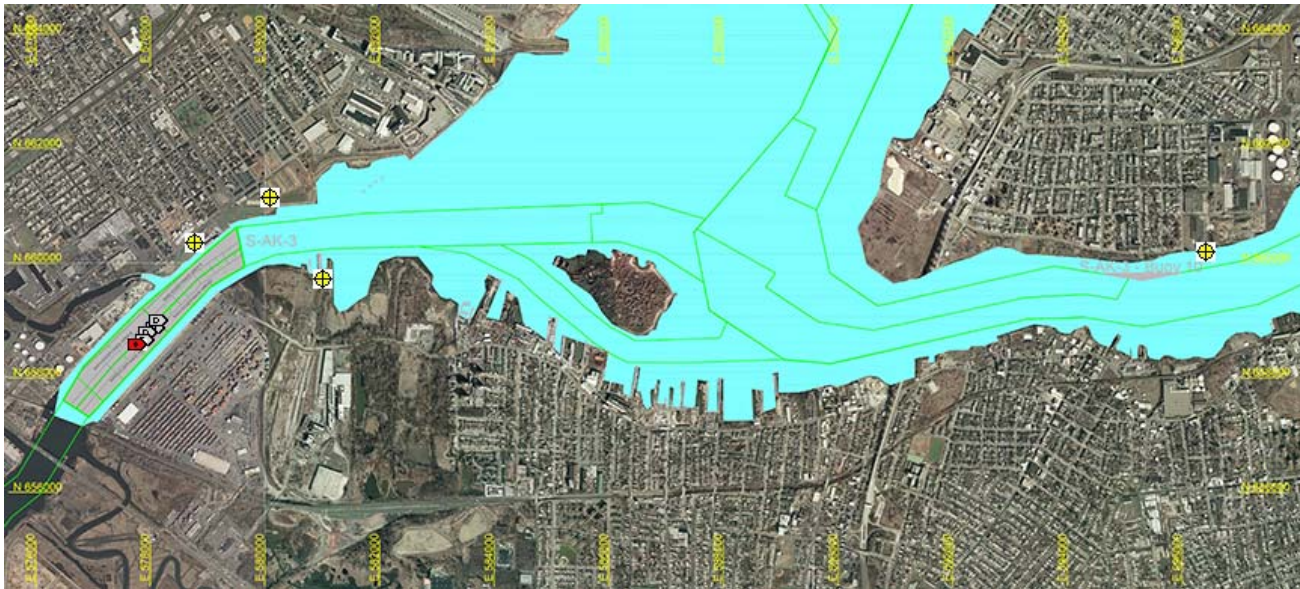
Arthur Kill Blast Vibration Summary

This site summarizes the measured ground vibrations in northwest Staten Island, from rock blasting in the Arthur Kill and other possible sources. The site is updated daily. The data are intended for the sole use of the US Army Corps of Engineers - New York District, for managing and monitoring the performance of NYNJ Harbor Deepening Project Contract in Arthur Kill starting 25 July 2011.

This page represents the most recent observations.

The Arthur Kill contract area is mapped below in light gray. The navigation grid is superimposed. Today's dredge locations are marked by colored symbols, connected by colored lines to this week's past locations marked by gray symbols. The drilling and blasting barge is marked in red. The easting and northing map coordinates in the New Jersey State Plane coordinate system are in yellow. The locations of active seismograph stations are marked by yellow station symbols. (e4sciences stations are circles. CDB stations are triangles.) Selecting a station activates its station page.

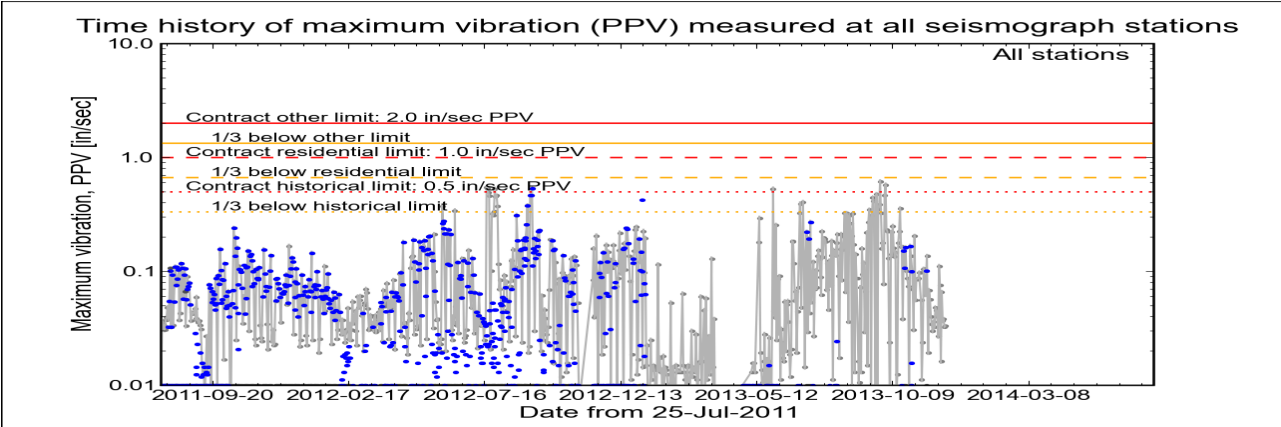
Click station for station information or click channel for event summary.



Latest Event Summary

The graph below is a plot of the maximum vibration recorded by any and all of the numerous seismograph stations during the current observation event (ambient or blast). The horizontal axis gives the date from the start of the project on 25 July 2011. The vertical axis gives the maximum vibration in peak particle velocity (PPV) in units of inches per second (in/sec). The red curves show the project's contract limits; the orange curves show one-third (1/3) below these contract limits. (The light gray curve is ambient-vibration level. The blue dots are blast-vibration levels. The dark gray dots are predicted blast-vibration levels.)

Date and time of last reading: Fri 06-Dec-2013 13:47:35



(Click on graph or [here](#) for larger view)

The table below lists the date, time, level, and station of the maximum-vibration recording for each and every event. Selecting an event activates its event page.

Blast ID	Date	Time	Max PPV (in / second)	Max PPV Station
<a href="#">Ambient</a>	<a href="#">Fri 06-Dec-2013</a>	13:47:35	0.0331	<a href="#">Elizabeth Marina</a>
<a href="#">Ambient</a>	<a href="#">Thu 05-Dec-2013</a>	15:47:35	0.0325	<a href="#">Elizabeth Marina</a>
<a href="#">Ambient</a>	<a href="#">Wed 04-Dec-2013</a>	19:02:35	0.0381	<a href="#">Elizabeth Marina</a>
<a href="#">Ambient</a>	<a href="#">Tue 03-Dec-2013</a>	14:02:35	0.0369	<a href="#">Elizabeth Marina</a>
<a href="#">Ambient</a>	<a href="#">Mon 02-Dec-2013</a>	17:47:32	0.0656	<a href="#">Elizabeth Marina</a>
<a href="#">Ambient</a>	<a href="#">Sun 01-Dec-2013</a>	10:38:01	0.0162	<a href="#">Bavonne</a>



| Earthworks, LLC

27 Glen Road, Sandy Hook, CT 06482

[www.e4sciences.com](#)



US Army Corps  
of Engineers®  
New York District

Home   Event Summary   Stations:   Dredges   History   Links

Arthur Kill Blasting Event Summary

This page summarizes measurements of ground vibrations for the selected event. This page displays the maximum vibration recorded at each and every seismograph station during this event.

The Arthur Kill contract area is mapped below with a top-of-rock map. Today's dredge locations are marked by colored symbols, connected by colored lines to this week's past locations marked by gray symbols. The drilling and blasting barge location is marked in red. The easting and northing map coordinates in the New Jersey State Plane coordinate system are in yellow. The locations of active seismograph stations are marked by yellow station symbols. (e4sciences stations are circles. CDB stations are triangles.) Selecting a station activates its station page.

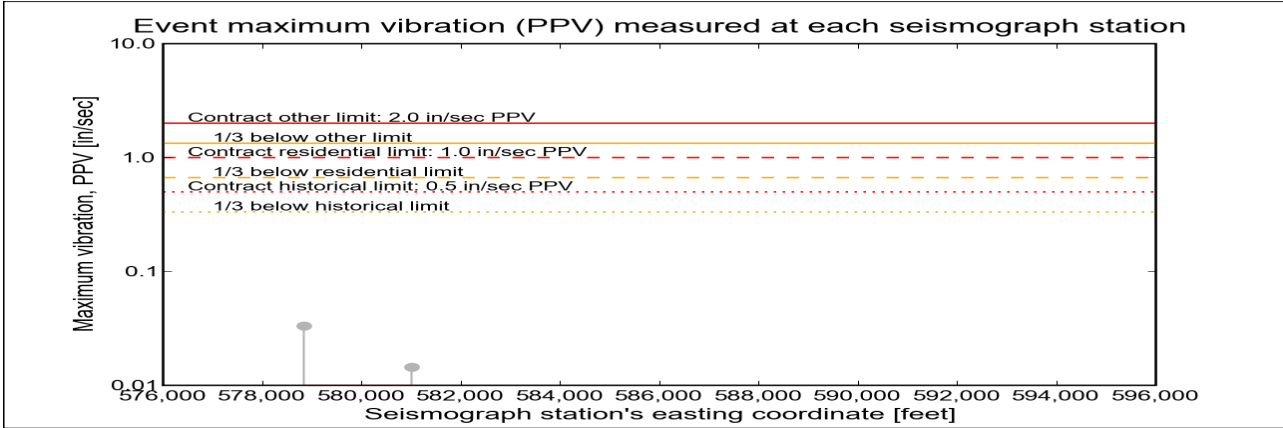
Click station for more information about the station.



Selected Event Summary

The graph below plots the maximum vibration during the selected event period (blast or ambient) recorded at each and every seismograph station along the easting positions. The vertical axis gives the maximum vibration in peak particle velocity (PPV) in units of inches per second (in/sec). If the maximum vibration level at a station is below 0.01 in/sec, the marker is a v-shaped triangle at 0.01 in/sec. (Light-gray stems indicate ambient-vibration level. Black stems indicate blast-vibration level. Dark-gray stems indicate predicted blast-vibration level.)

Date of reading: Fri 06-Dec-2013



(Click on graph or [here](#) for larger view)

The table below lists the date, time, and level of the maximum-vibration recording at each station for the selected event.

Station	Date	Time	Max PPV (in / second)	Vibration Type
<a href="#">Elizabeth Marina - e4s010</a>	Fri 06-Dec-2013	13:47:35	0.0331	<a href="#">Ambient</a>
<a href="#">NYCT - e4s008</a>	Fri 06-Dec-2013	19:07:44	0.0144	<a href="#">Ambient</a>







US Army Corps  
of Engineers®  
New York District

Home    Event Summary    Stations:    Dredges    History    Links

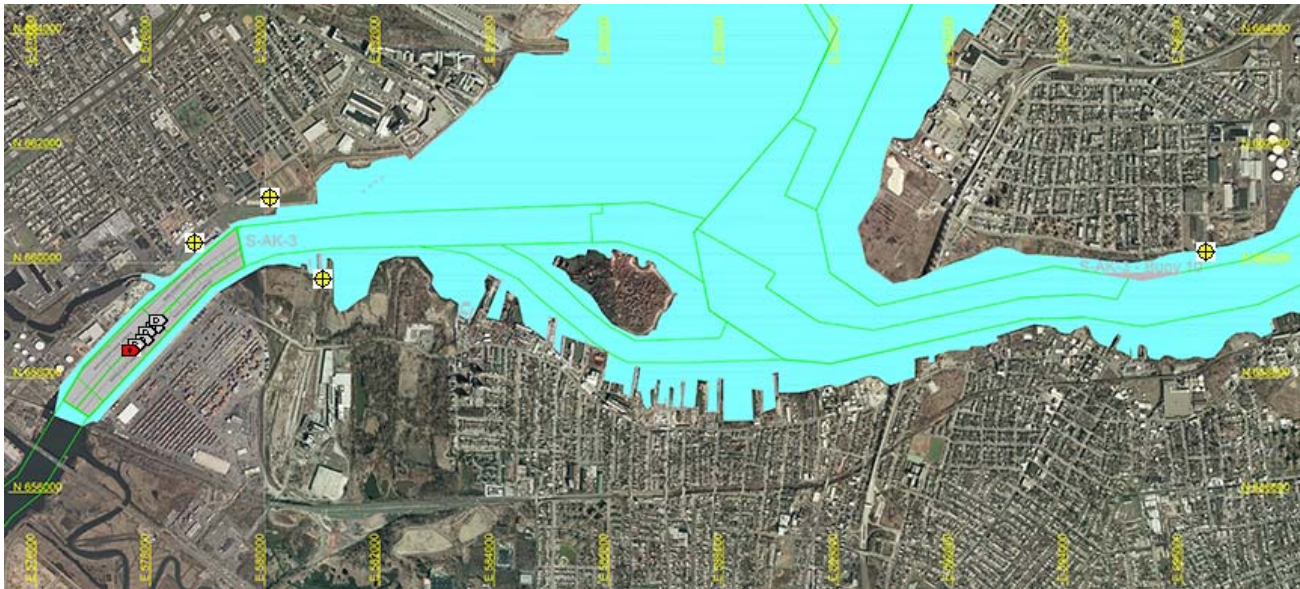
Arthur Kill Blast Vibration Summary

This site summarizes the measured ground vibrations in northwest Staten Island, from rock blasting in the Arthur Kill and other possible sources. The site is updated daily. The data are intended for the sole use of the US Army Corps of Engineers - New York District, for managing and monitoring the performance of NYNJ Harbor Deepening Project Contract in Arthur Kill starting 25 July 2011.

This page represents the most recent observations.

The Arthur Kill contract area is mapped below in light gray. The navigation grid is superimposed. Today's dredge locations are marked by colored symbols, connected by colored lines to this week's past locations marked by gray symbols. The drilling and blasting barge is marked in red. The easting and northing map coordinates in the New Jersey State Plane coordinate system are in yellow. The locations of active seismograph stations are marked by yellow station symbols. (e4sciences stations are circles. CDB stations are triangles.) Selecting a station activates its station page.

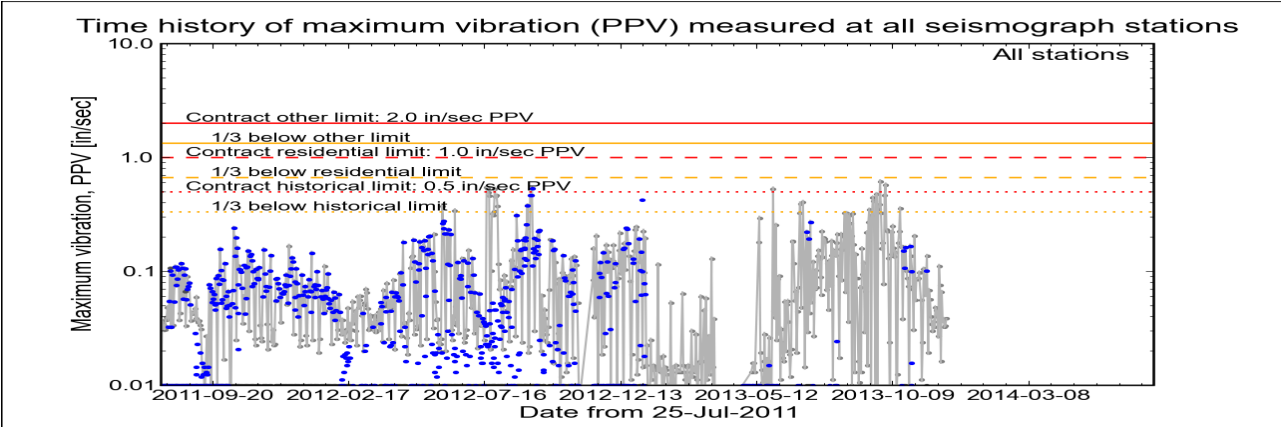
Click station for station information or click channel for event summary.



Latest Event Summary

The graph below is a plot of the maximum vibration recorded by any and all of the numerous seismograph stations during the current observation event (ambient or blast). The horizontal axis gives the date from the start of the project on 25 July 2011. The vertical axis gives the maximum vibration in peak particle velocity (PPV) in units of inches per second (in/sec). The red curves show the project's contract limits; the orange curves show one-third (1/3) below these contract limits. (The light gray curve is ambient-vibration level. The blue dots are blast-vibration levels. The dark gray dots are predicted blast-vibration levels.)

Date and time of last reading: Sat 07-Dec-2013 17:02:36



(Click on graph or [here](#) for larger view)

The table below lists the date, time, level, and station of the maximum-vibration recording for each and every event. Selecting an event activates its event page.

Blast ID	Date	Time	Max PPV (in / second)	Max PPV Station
Ambient	Sat 07-Dec-2013	17:02:36	0.0387	<a href="#">Elizabeth Marina</a>
Ambient	Fri 06-Dec-2013	13:47:35	0.0331	<a href="#">Elizabeth Marina</a>
Ambient	Thu 05-Dec-2013	15:47:35	0.0325	<a href="#">Elizabeth Marina</a>
Ambient	Wed 04-Dec-2013	19:02:35	0.0381	<a href="#">Elizabeth Marina</a>
Ambient	Tue 03-Dec-2013	14:02:35	0.0369	<a href="#">Elizabeth Marina</a>
Ambient	Mon 02-Dec-2013	17:47:32	0.0656	<a href="#">Elizabeth Marina</a>



| Earthworks, LLC

27 Glen Road, Sandy Hook, CT 06482

[www.e4sciences.com](http://www.e4sciences.com)



US Army Corps  
of Engineers®  
New York District

Home    Event Summary    Stations:    Dredges    History    Links

Arthur Kill Blasting Event Summary

This page summarizes measurements of ground vibrations for the selected event. This page displays the maximum vibration recorded at each and every seismograph station during this event.

The Arthur Kill contract area is mapped below with a top-of-rock map. Today's dredge locations are marked by colored symbols, connected by colored lines to this week's past locations marked by gray symbols. The drilling and blasting barge location is marked in red. The easting and northing map coordinates in the New Jersey State Plane coordinate system are in yellow. The locations of active seismograph stations are marked by yellow station symbols. (e4sciences stations are circles. CDB stations are triangles.) Selecting a station activates its station page.

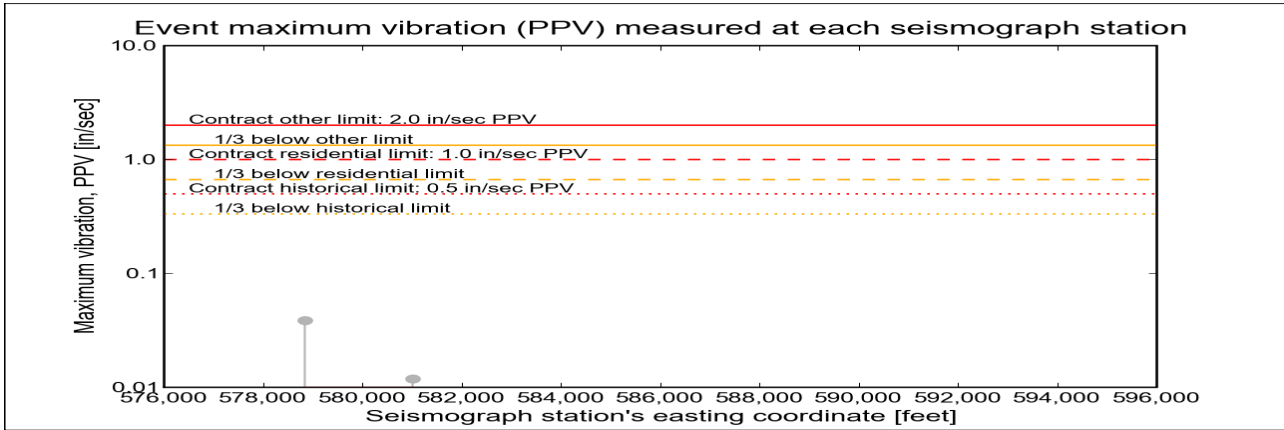
Click station for more information about the station.



Selected Event Summary

The graph below plots the maximum vibration during the selected event period (blast or ambient) recorded at each and every seismograph station along the easting positions. The vertical axis gives the maximum vibration in peak particle velocity (PPV) in units of inches per second (in/sec). If the maximum vibration level at a station is below 0.01 in/sec, the marker is a v-shaped triangle at 0.01 in/sec. (Light-gray stems indicate ambient-vibration level. Black stems indicate blast-vibration level. Dark-gray stems indicate predicted blast-vibration level.)

Date of reading: Sat 07-Dec-2013



(Click on graph or [here](#) for larger view)

The table below lists the date, time, and level of the maximum-vibration recording at each station for the selected event.

Station	Date	Time	Max PPV (in / second)	Vibration Type
<a href="#">Elizabeth Marina - e4s010</a>	<a href="#">Sat 07-Dec-2013</a>	17:02:36	0.0387	<a href="#">Ambient</a>
<a href="#">NYCT - e4s008</a>	<a href="#">Sat 07-Dec-2013</a>	17:07:47	0.0119	<a href="#">Ambient</a>







US Army Corps  
of Engineers®  
New York District

Home    Event Summary    Stations:    Dredges    History    Links

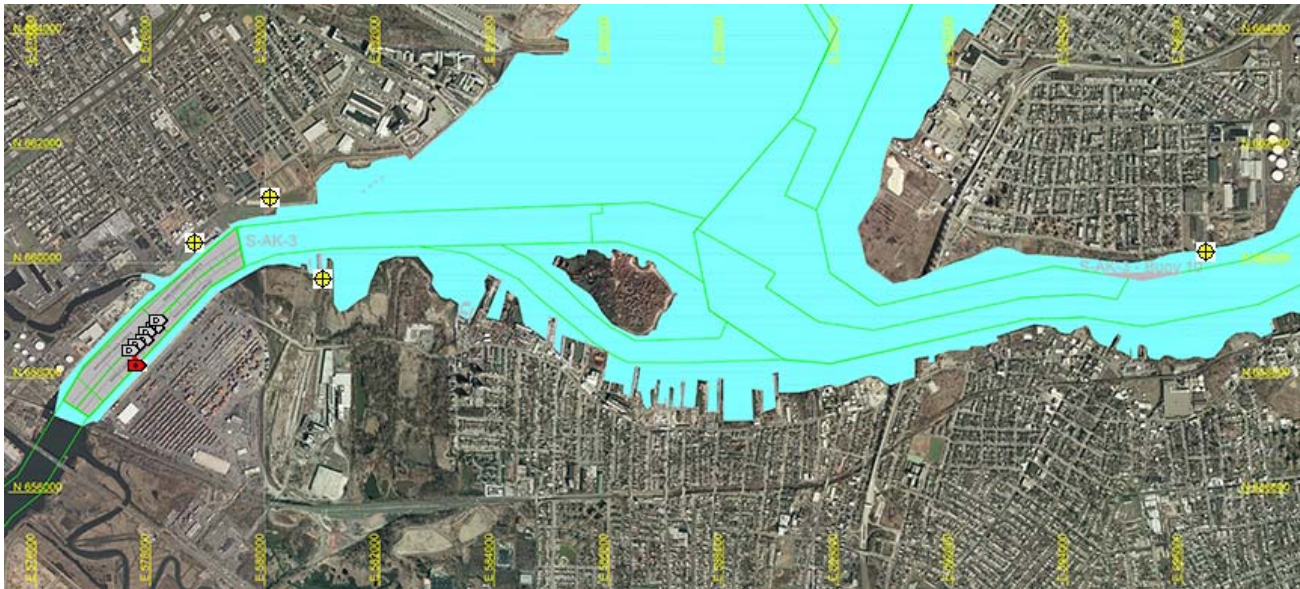
Arthur Kill Blast Vibration Summary

This site summarizes the measured ground vibrations in northwest Staten Island, from rock blasting in the Arthur Kill and other possible sources. The site is updated daily. The data are intended for the sole use of the US Army Corps of Engineers - New York District, for managing and monitoring the performance of NYNJ Harbor Deepening Project Contract in Arthur Kill starting 25 July 2011.

This page represents the most recent observations.

The Arthur Kill contract area is mapped below in light gray. The navigation grid is superimposed. Today's dredge locations are marked by colored symbols, connected by colored lines to this week's past locations marked by gray symbols. The drilling and blasting barge is marked in red. The easting and northing map coordinates in the New Jersey State Plane coordinate system are in yellow. The locations of active seismograph stations are marked by yellow station symbols. (e4sciences stations are circles. CDB stations are triangles.) Selecting a station activates its station page.

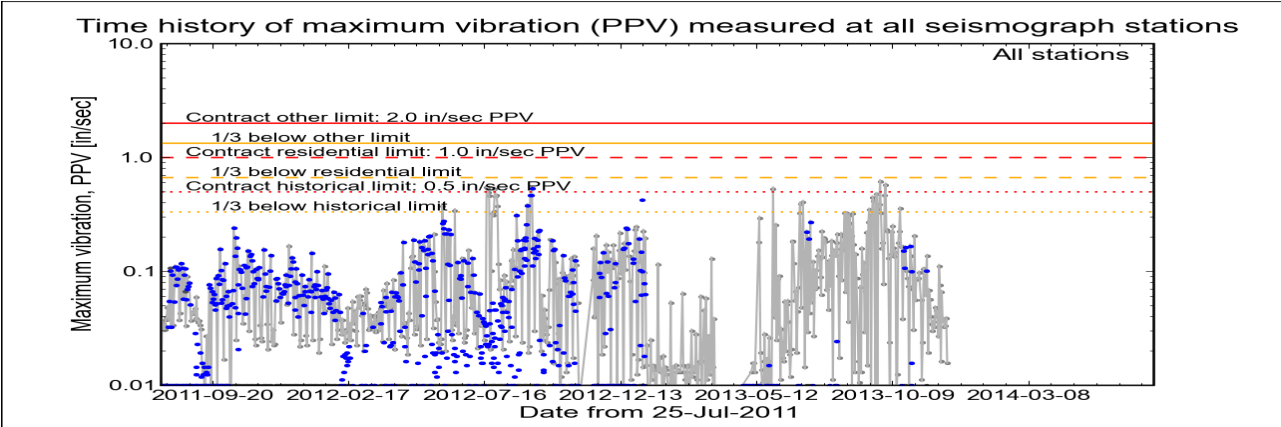
Click station for station information or click channel for event summary.



Latest Event Summary

The graph below is a plot of the maximum vibration recorded by any and all of the numerous seismograph stations during the current observation event (ambient or blast). The horizontal axis gives the date from the start of the project on 25 July 2011. The vertical axis gives the maximum vibration in peak particle velocity (PPV) in units of inches per second (in/sec). The red curves show the project's contract limits; the orange curves show one-third (1/3) below these contract limits. (The light gray curve is ambient-vibration level. The blue dots are blast-vibration levels. The dark gray dots are predicted blast-vibration levels.)

Date and time of last reading: Sun 08-Dec-2013 16:32:36



(Click on graph or [here](#) for larger view)

The table below lists the date, time, level, and station of the maximum-vibration recording for each and every event. Selecting an event activates its event page.

Blast ID	Date	Time	Max PPV (in / second)	Max PPV Station
Ambient	Sun 08-Dec-2013	16:32:36	0.0156	<a href="#">Elizabeth Marina</a>
Ambient	Sat 07-Dec-2013	17:02:36	0.0387	<a href="#">Elizabeth Marina</a>
Ambient	Fri 06-Dec-2013	13:47:35	0.0331	<a href="#">Elizabeth Marina</a>
Ambient	Thu 05-Dec-2013	15:47:35	0.0325	<a href="#">Elizabeth Marina</a>
Ambient	Wed 04-Dec-2013	19:02:35	0.0381	<a href="#">Elizabeth Marina</a>
Ambient	Tue 03-Dec-2013	14:02:35	0.0369	<a href="#">Elizabeth Marina</a>



Earthworks, LLC

27 Glen Road, Sandy Hook, CT 06482

[www.e4sciences.com](http://www.e4sciences.com)



US Army Corps  
of Engineers®  
New York District

Home    Event Summary    Stations:    Dredges    History    Links

Arthur Kill Blasting Event Summary

This page summarizes measurements of ground vibrations for the selected event. This page displays the maximum vibration recorded at each and every seismograph station during this event.

The Arthur Kill contract area is mapped below with a top-of-rock map. Today's dredge locations are marked by colored symbols, connected by colored lines to this week's past locations marked by gray symbols. The drilling and blasting barge location is marked in red. The easting and northing map coordinates in the New Jersey State Plane coordinate system are in yellow. The locations of active seismograph stations are marked by yellow station symbols. (*e4sciences stations are circles. CDB stations are triangles.*) Selecting a station activates its station page.

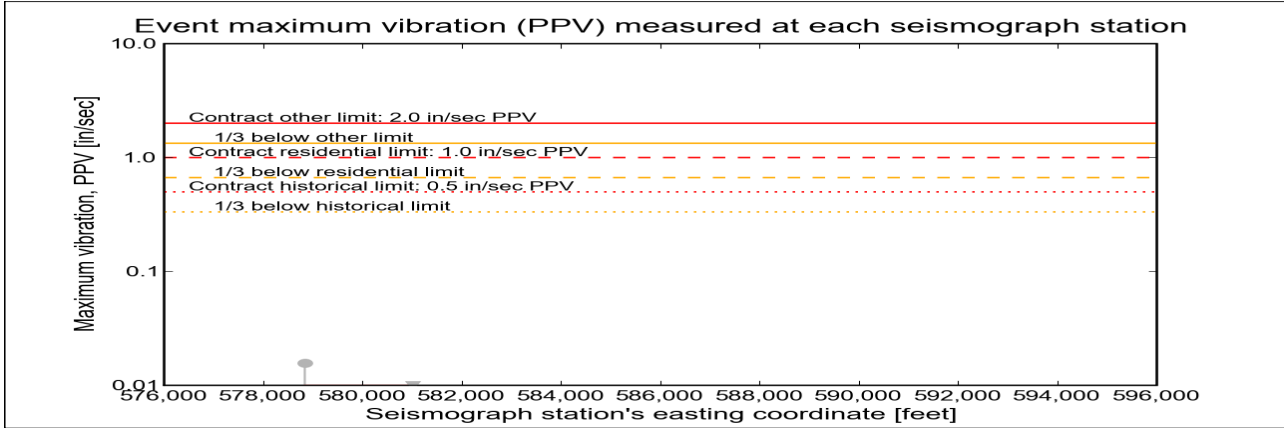
Click station for more information about the station.



Selected Event Summary

The graph below plots the maximum vibration during the selected event period (blast or ambient) recorded at each and every seismograph station along the easting positions. The vertical axis gives the maximum vibration in peak particle velocity (PPV) in units of inches per second (in/sec). If the maximum vibration level at a station is below 0.01 in/sec, the marker is a v-shaped triangle at 0.01 in/sec. (*Light-gray stems indicate ambient-vibration level. Black stems indicate blast-vibration level. Dark-gray stems indicate predicted blast-vibration level.*)

Date of reading: Sun 08-Dec-2013



(Click on graph or [here](#) for larger view)

The table below lists the date, time, and level of the maximum-vibration recording at each station for the selected event.

Station	Date	Time	Max PPV (in / second)	Vibration Type
<a href="#">Elizabeth Marina - e4s010</a>	Sun 08-Dec-2013	16:32:36	0.0156	<a href="#">Ambient</a>
<a href="#">NYCT - e4s008</a>	Sun 08-Dec-2013	13:22:44	0.00375	<a href="#">Ambient</a>

