



Department of the Army  
New York District Corps of Engineers  
Jacob K. Javits Federal Building  
26 Federal Plaza  
New York, NY 10278-0090

## Week of March 3 – March 9, 2014

The following pages display the results from the USACE-NYD real-time website for the week of Monday, March 3, through Sunday, March 9, 2014.

There were 6 blasts this week in the S-AK-3 project area.

We recorded vibrations in the S-AK-3 project area. The maximum vibration recorded was 0.143 in/s recorded at Elizabeth Marina on March 3. Table 1 summarizes the blasts this week.

Page 2 summarizes dredge locations for this week. The map shows the week's last dredge locations by colored symbols, connected by colored lines to the week's previous locations marked by gray symbols. Drillboat Apache operated in S-AK-3 all week.

The remaining odd pages display the home page showing the maximum vibration measured in all of the stations for most recent event for each day:

- March 3
- March 4
- March 5
- March 6
- March 7
- March 8
- March 9

The even pages show the maximum vibration observed at each station along easting for each event.

The results for this week show the measurements at the three active stations: New York Container Terminal (NYCT), Elizabethport, and Elizabeth Marina. The station locations are on each page.

Ground vibrations at NYCT were all below 0.0112 in/s. Vibrations at Elizabethport were all below 0.01 in/s. Vibrations at Elizabeth Marina were all below 0.143 in/s. All blast vibration measurements are below the contract vibration limits for this site.

**Table 1.** Blast Summary for this week

Blast	Date & Time EST/EDT of blast	Distance from blast to e4s stations (feet)	e4s Max. vibration (in/s)
AK-230	2014-03-03 15:27	4,590 - 6,130	0.143
AK-231	2014-03-04 11:30	4,490 - 6,050	0.0106
AK-232	2014-03-05 09:06	4,080 - 5,660	0.0125
AK-233	2014-03-05 14:30	4,220 - 5,800	0.0137
AK-234	2014-03-06 09:05	4,370 - 5,940	0.0187
AK-235	2014-03-06 14:45	4,230 - 5,800	0.0144

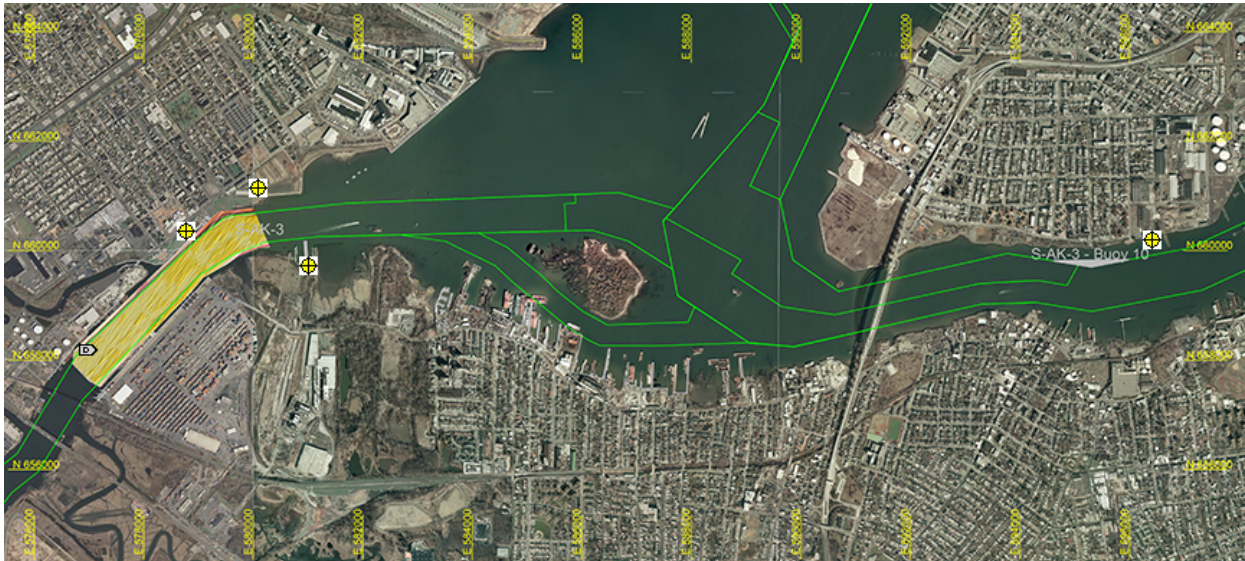


Dredge Position Summary

This page summarizes dredge positions for the week. The Arthur Kill contract area is mapped with a top-of-rock map. The navigation grid is superimposed. The map shows dredge locations by colored symbols, connected by colored lines to the week's past locations marked by gray symbols. The map resets beginning the Monday of each week.

Mousing over a dredge location produces a pop-up text box giving dredge name, date of location, and easting and northing coordinates of the location in the NAD83 New Jersey State Plane coordinate system.

Click on a station for station information.




[Todays Dredge Position](#)

[Latest Week's  
Dredge Position Summary](#)

[Project  
History List](#)

The table below lists the date, name, easting, northing, and notes for the week's dredge positions. The position is the last reported dredge position of the day.

Dredge Location Table

Date	Dredge Name	Easting	Northing	Notes
2014-03-09 Sun				No Activity
2014-03-08 Sat				No Activity
2014-03-07 Fri				No Activity
2014-03-06 Thu				No Activity
2014-03-05 Wed				No Activity
2014-03-04 Tue	Drillboat Apache	 577074	658221	
2014-03-03 Mon				No Activity





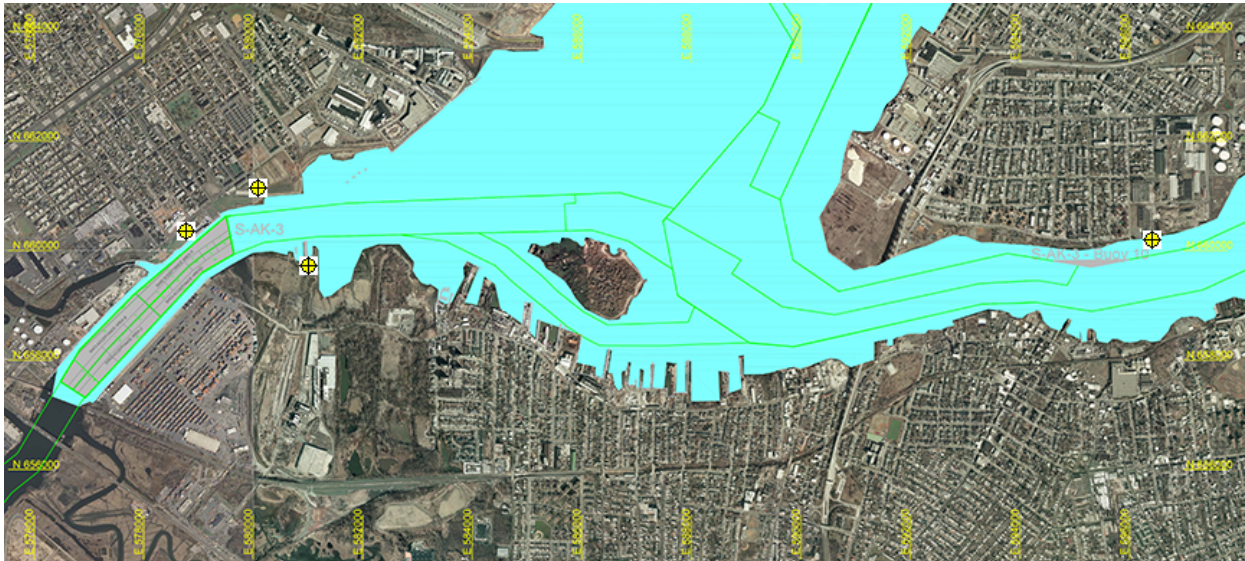
Arthur Kill Blast Vibration Summary

This site summarizes the measured ground vibrations in northwest Staten Island, from rock blasting in the Arthur Kill and other possible sources. The site is updated daily. The data are intended for the sole use of the US Army Corps of Engineers - New York District, for managing and monitoring the performance of NYNJ Harbor Deepening Project Contract in Arthur Kill starting 25 July 2011.

This page represents the most recent observations.

The Arthur Kill contract area is mapped below in light gray. The navigation grid is superimposed. Today's dredge locations are marked by colored symbols, connected by colored lines to this week's past locations marked by gray symbols. The drilling and blasting barge is marked in red. The easting and northing map coordinates in the New Jersey State Plane coordinate system are in yellow. The locations of active seismograph stations are marked by yellow station symbols. (e4sciences stations are circles. CDB stations are triangles.) Selecting a station activates its station page.

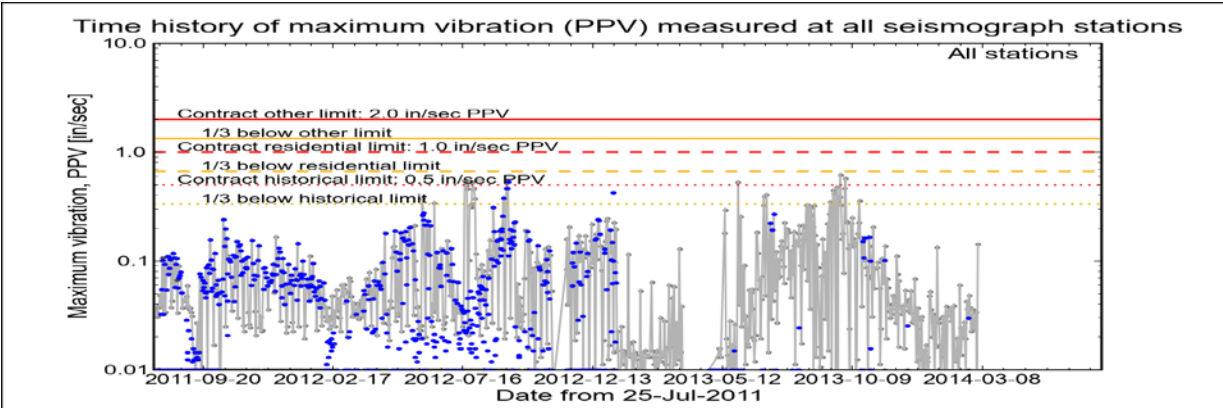
Click station for station information or click channel for event summary.



Latest Event Summary

The graph below is a plot of the maximum vibration recorded by any and all of the numerous seismograph stations during the current observation event (ambient or blast). The horizontal axis gives the date from the start of the project on 25 July 2011. The vertical axis gives the maximum vibration in peak particle velocity (PPV) in units of inches per second (in/sec). The red curves show the project's contract limits; the orange curves show one-third (1/3) below these contract limits. (The light gray curve is ambient-vibration level. The blue dots are blast-vibration levels. The dark gray dots are predicted blast-vibration levels.)

Date and time of last reading: Mon 03-Mar-2014 19:19:25



(Click on graph or [here](#) for larger view)

The table below lists the date, time, level, and station of the maximum-vibration recording for each and every event. Selecting an event activates its event page.

Blast ID	Date	Time	Max PPV (in / second)	Max PPV Station
<a href="#">Ambient</a>	<a href="#">Mon 03-Mar-2014</a>	19:19:25	0.1430	<a href="#">Elizabeth Marina</a>
<a href="#">Ambient</a>	<a href="#">Sun 02-Mar-2014</a>	18:23:38	0.0075	<a href="#">NYCT</a>
<a href="#">Ambient</a>	<a href="#">Sat 01-Mar-2014</a>	14:02:36	0.0337	<a href="#">Elizabeth Marina</a>
<a href="#">Ambient</a>	<a href="#">Fri 28-Feb-2014</a>	13:02:36	0.0287	<a href="#">Elizabeth Marina</a>
<a href="#">Ambient</a>	<a href="#">Thu 27-Feb-2014</a>	14:02:10	0.0237	<a href="#">Elizabeth Marina</a>
<a href="#">Ambient</a>	<a href="#">Wed 26-Feb-2014</a>	14:03:49	0.0256	<a href="#">Elizabeth Marina</a>







Arthur Kill Blasting Event Summary

This page summarizes measurements of ground vibrations for the selected event. This page displays the maximum vibration recorded at each and every seismograph station during this event.

The Arthur Kill contract area is mapped below with a top-of-rock map. Today's dredge locations are marked by colored symbols, connected by colored lines to this week's past locations marked by gray symbols. The drilling and blasting barge location is marked in red. The easting and northing map coordinates in the New Jersey State Plane coordinate system are in yellow. The locations of active seismograph stations are marked by yellow station symbols. (*e4sciences stations are circles. CDB stations are triangles.*) Selecting a station activates its station page.

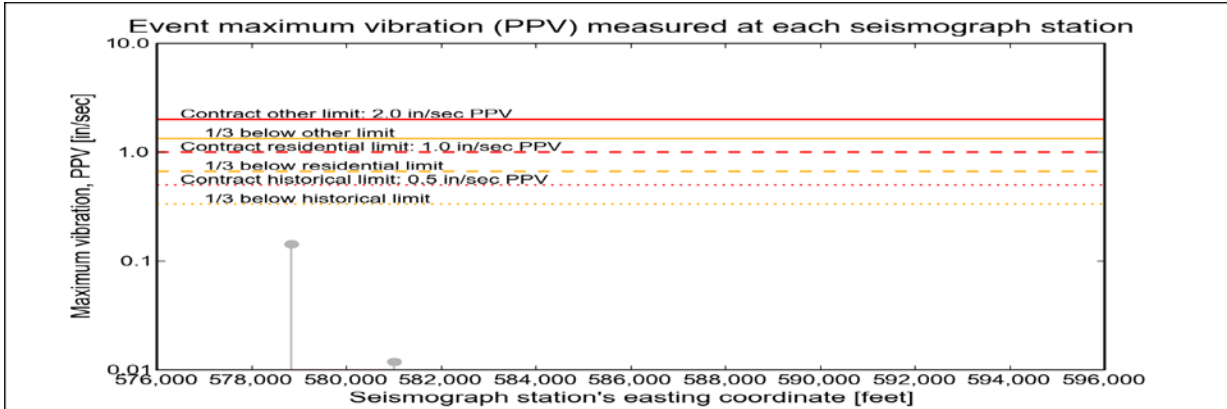
Click station for more information about the station.



Selected Event Summary

The graph below plots the maximum vibration during the selected event period (blast or ambient) recorded at each and every seismograph station along the easting positions. The vertical axis gives the maximum vibration in peak particle velocity (PPV) in units of inches per second (in/sec). If the maximum vibration level at a station is below 0.01 in/sec, the marker is a v-shaped triangle at 0.01 in/sec. (*Light-gray stems indicate ambient-vibration level. Black stems indicate blast-vibration level. Dark-gray stems indicate predicted blast-vibration level.*)

Date of reading: Mon 03-Mar-2014



(Click on graph or [here](#) for larger view)

The table below lists the date, time, and level of the maximum-vibration recording at each station for the selected event.

Station	Date	Time	Max PPV (in / second)	Vibration Type
Elizabeth Marina - e4s010	Mon 03-Mar-2014	19:19:25	0.143	Ambient
NYCT - e4s008	Mon 03-Mar-2014	20:22:47	0.0119	Ambient





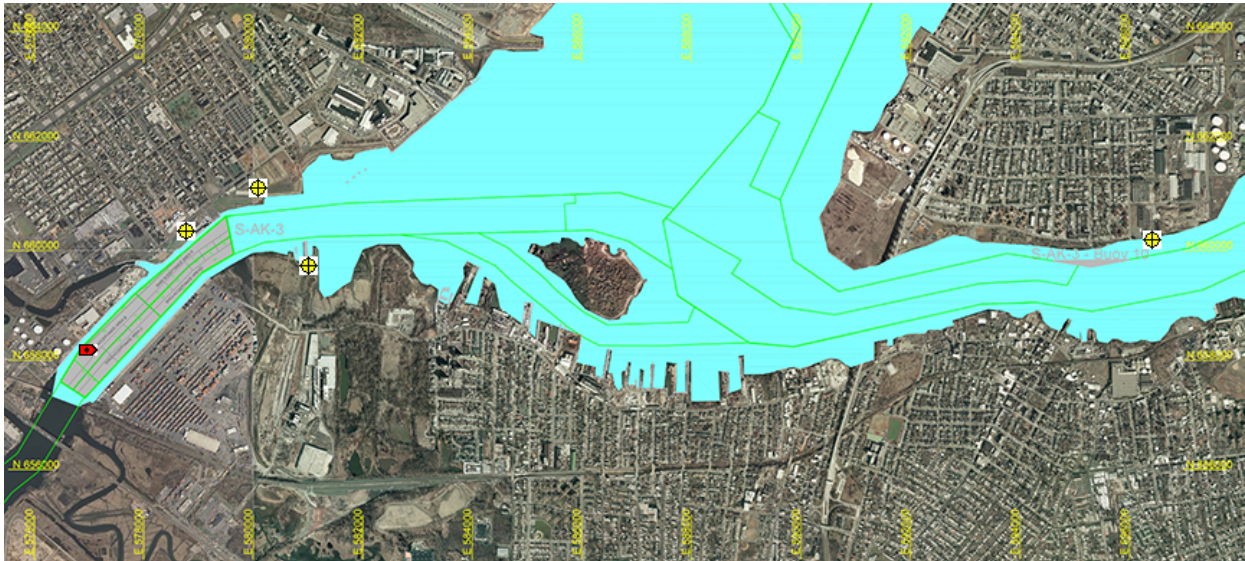
Arthur Kill Blast Vibration Summary

This site summarizes the measured ground vibrations in northwest Staten Island, from rock blasting in the Arthur Kill and other possible sources. The site is updated daily. The data are intended for the sole use of the US Army Corps of Engineers - New York District, for managing and monitoring the performance of NYNJ Harbor Deepening Project Contract in Arthur Kill starting 25 July 2011.

This page represents the most recent observations.

The Arthur Kill contract area is mapped below in light gray. The navigation grid is superimposed. Today's dredge locations are marked by colored symbols, connected by colored lines to this week's past locations marked by gray symbols. The drilling and blasting barge is marked in red. The easting and northing map coordinates in the New Jersey State Plane coordinate system are in yellow. The locations of active seismograph stations are marked by yellow station symbols. (e4sciences stations are circles. CDB stations are triangles.) Selecting a station activates its station page.

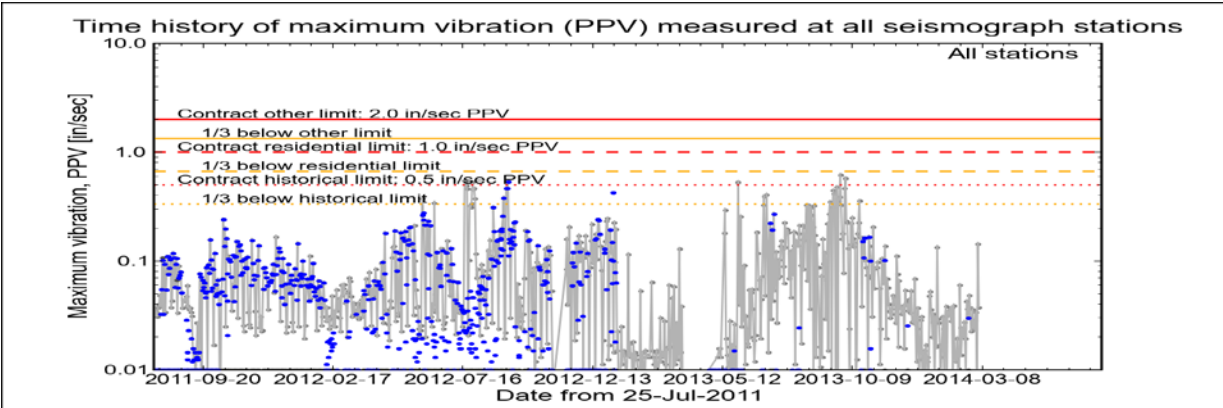
Click station for station information or click channel for event summary.



Latest Event Summary

The graph below is a plot of the maximum vibration recorded by any and all of the numerous seismograph stations during the current observation event (ambient or blast). The horizontal axis gives the date from the start of the project on 25 July 2011. The vertical axis gives the maximum vibration in peak particle velocity (PPV) in units of inches per second (in/sec). The red curves show the project's contract limits; the orange curves show one-third (1/3) below these contract limits. (The light gray curve is ambient-vibration level. The blue dots are blast-vibration levels. The dark gray dots are predicted blast-vibration levels.)

Date and time of last reading: Tue 04-Mar-2014 18:15:39



(Click on graph or [here](#) for larger view)

The table below lists the date, time, level, and station of the maximum-vibration recording for each and every event. Selecting an event activates its event page.

Blast ID	Date	Time	Max PPV (in / second)	Max PPV Station
<a href="#">Ambient</a>	<a href="#">Tue 04-Mar-2014</a>	18:15:39	0.0375	<a href="#">NYCT</a>
<a href="#">Ambient</a>	<a href="#">Mon 03-Mar-2014</a>	19:19:25	0.1430	<a href="#">Elizabeth Marina</a>
<a href="#">Ambient</a>	<a href="#">Sun 02-Mar-2014</a>	18:23:38	0.0075	<a href="#">NYCT</a>
<a href="#">Ambient</a>	<a href="#">Sat 01-Mar-2014</a>	14:02:36	0.0337	<a href="#">Elizabeth Marina</a>
<a href="#">Ambient</a>	<a href="#">Fri 28-Feb-2014</a>	13:02:36	0.0287	<a href="#">Elizabeth Marina</a>
<a href="#">Ambient</a>	<a href="#">Thu 27-Feb-2014</a>	14:02:10	0.0237	<a href="#">Elizabeth Marina</a>







Arthur Kill Blasting Event Summary

This page summarizes measurements of ground vibrations for the selected event. This page displays the maximum vibration recorded at each and every seismograph station during this event.

The Arthur Kill contract area is mapped below with a top-of-rock map. Today's dredge locations are marked by colored symbols, connected by colored lines to this week's past locations marked by gray symbols. The drilling and blasting barge location is marked in red. The easting and northing map coordinates in the New Jersey State Plane coordinate system are in yellow. The locations of active seismograph stations are marked by yellow station symbols. (*e4sciences stations are circles. CDB stations are triangles.*) Selecting a station activates its station page.

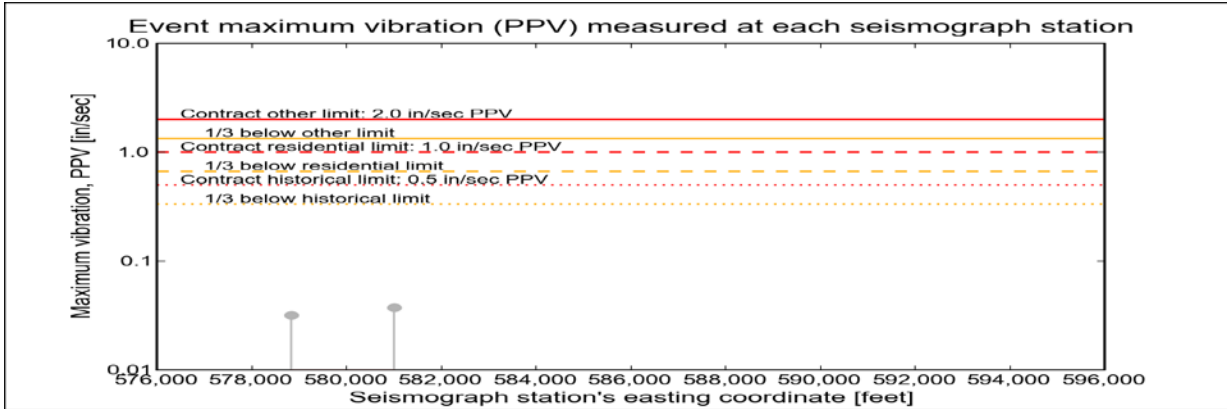
Click station for more information about the station.



Selected Event Summary

The graph below plots the maximum vibration during the selected event period (blast or ambient) recorded at each and every seismograph station along the easting positions. The vertical axis gives the maximum vibration in peak particle velocity (PPV) in units of inches per second (in/sec). If the maximum vibration level at a station is below 0.01 in/sec, the marker is a v-shaped triangle at 0.01 in/sec. (*Light-gray stems indicate ambient-vibration level. Black stems indicate blast-vibration level. Dark-gray stems indicate predicted blast-vibration level.*)

Date of reading: Tue 04-Mar-2014



(Click on graph or [here](#) for larger view)

The table below lists the date, time, and level of the maximum-vibration recording at each station for the selected event.

Station	Date	Time	Max PPV (in / second)	Vibration Type
Elizabeth Marina - e4s010	Tue 04-Mar-2014	16:17:36	0.0319	Ambient
NYCT - e4s008	Tue 04-Mar-2014	18:15:39	0.0375	Ambient





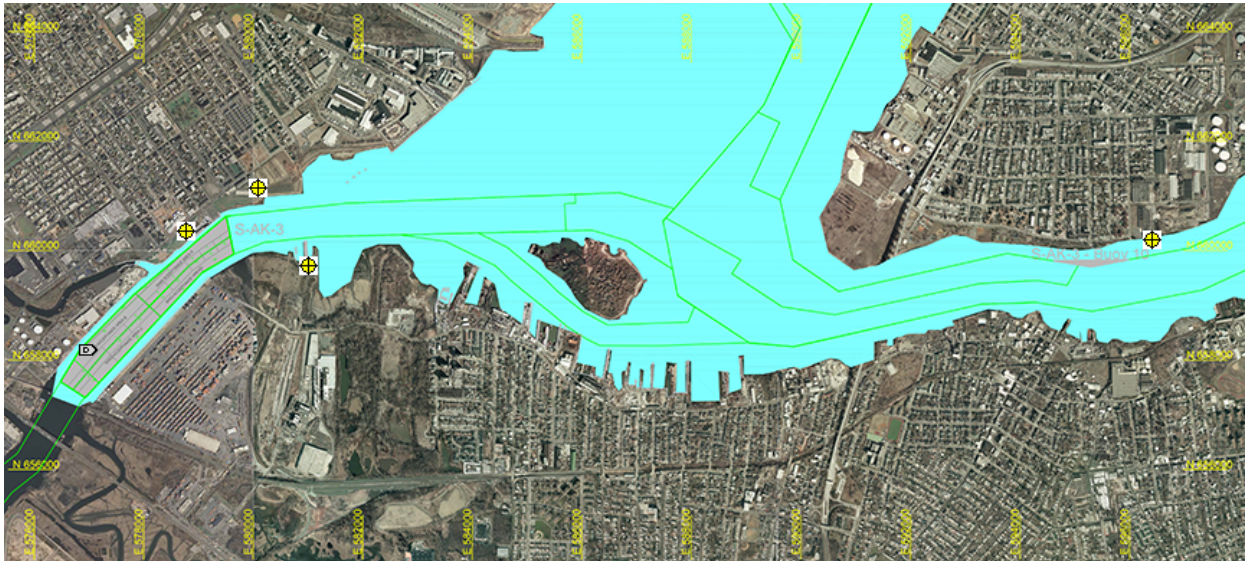
Arthur Kill Blast Vibration Summary

This site summarizes the measured ground vibrations in northwest Staten Island, from rock blasting in the Arthur Kill and other possible sources. The site is updated daily. The data are intended for the sole use of the US Army Corps of Engineers - New York District, for managing and monitoring the performance of NYNJ Harbor Deepening Project Contract in Arthur Kill starting 25 July 2011.

This page represents the most recent observations.

The Arthur Kill contract area is mapped below in light gray. The navigation grid is superimposed. Today's dredge locations are marked by colored symbols, connected by colored lines to this week's past locations marked by gray symbols. The drilling and blasting barge is marked in red. The easting and northing map coordinates in the New Jersey State Plane coordinate system are in yellow. The locations of active seismograph stations are marked by yellow station symbols. (e4sciences stations are circles. CDB stations are triangles.) Selecting a station activates its station page.

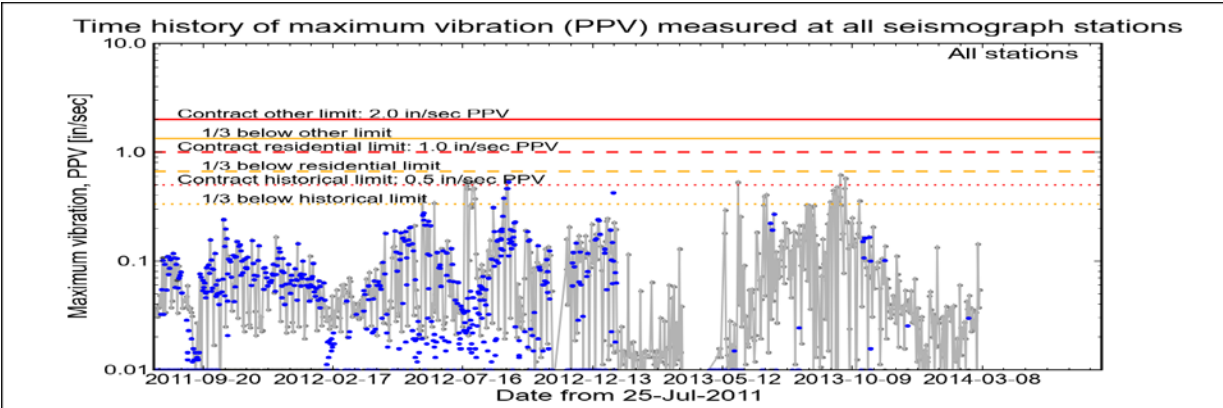
Click station for station information or click channel for event summary.



Latest Event Summary

The graph below is a plot of the maximum vibration recorded by any and all of the numerous seismograph stations during the current observation event (ambient or blast). The horizontal axis gives the date from the start of the project on 25 July 2011. The vertical axis gives the maximum vibration in peak particle velocity (PPV) in units of inches per second (in/sec). The red curves show the project's contract limits; the orange curves show one-third (1/3) below these contract limits. (The light gray curve is ambient-vibration level. The blue dots are blast-vibration levels. The dark gray dots are predicted blast-vibration levels.)

Date and time of last reading: Wed 05-Mar-2014 13:16:02



(Click on graph or [here](#) for larger view)

The table below lists the date, time, level, and station of the maximum-vibration recording for each and every event. Selecting an event activates its event page.

Blast ID	Date	Time	Max PPV (in / second)	Max PPV Station
<a href="#">Ambient</a>	<a href="#">Wed 05-Mar-2014</a>	13:16:02	0.0544	<a href="#">Elizabeth Marina</a>
<a href="#">Ambient</a>	<a href="#">Tue 04-Mar-2014</a>	18:15:39	0.0375	<a href="#">NYCT</a>
<a href="#">Ambient</a>	<a href="#">Mon 03-Mar-2014</a>	19:19:25	0.1430	<a href="#">Elizabeth Marina</a>
<a href="#">Ambient</a>	<a href="#">Sun 02-Mar-2014</a>	18:23:38	0.0075	<a href="#">NYCT</a>
<a href="#">Ambient</a>	<a href="#">Sat 01-Mar-2014</a>	14:02:36	0.0337	<a href="#">Elizabeth Marina</a>
<a href="#">Ambient</a>	<a href="#">Fri 28-Feb-2014</a>	13:02:36	0.0287	<a href="#">Elizabeth Marina</a>







Arthur Kill Blasting Event Summary

This page summarizes measurements of ground vibrations for the selected event. This page displays the maximum vibration recorded at each and every seismograph station during this event.

The Arthur Kill contract area is mapped below with a top-of-rock map. Today's dredge locations are marked by colored symbols, connected by colored lines to this week's past locations marked by gray symbols. The drilling and blasting barge location is marked in red. The easting and northing map coordinates in the New Jersey State Plane coordinate system are in yellow. The locations of active seismograph stations are marked by yellow station symbols. (*e4sciences stations are circles. CDB stations are triangles.*) Selecting a station activates its station page.

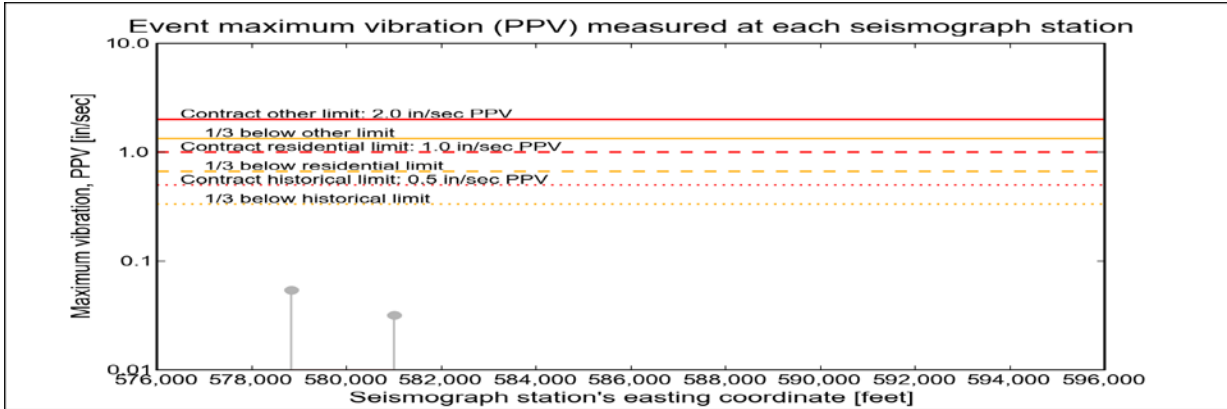
Click station for more information about the station.



Selected Event Summary

The graph below plots the maximum vibration during the selected event period (blast or ambient) recorded at each and every seismograph station along the easting positions. The vertical axis gives the maximum vibration in peak particle velocity (PPV) in units of inches per second (in/sec). If the maximum vibration level at a station is below 0.01 in/sec, the marker is a v-shaped triangle at 0.01 in/sec. (*Light-gray stems indicate ambient-vibration level. Black stems indicate blast-vibration level. Dark-gray stems indicate predicted blast-vibration level.*)

Date of reading: Wed 05-Mar-2014



(Click on graph or [here](#) for larger view)

The table below lists the date, time, and level of the maximum-vibration recording at each station for the selected event.

Station	Date	Time	Max PPV (in / second)	Vibration Type
<a href="#">Elizabeth Marina - e4s010</a>	<a href="#">Wed 05-Mar-2014</a>	13:16:02	0.0544	<a href="#">Ambient</a>
<a href="#">NYCT - e4s008</a>	<a href="#">Wed 05-Mar-2014</a>	12:21:56	0.0319	<a href="#">Ambient</a>







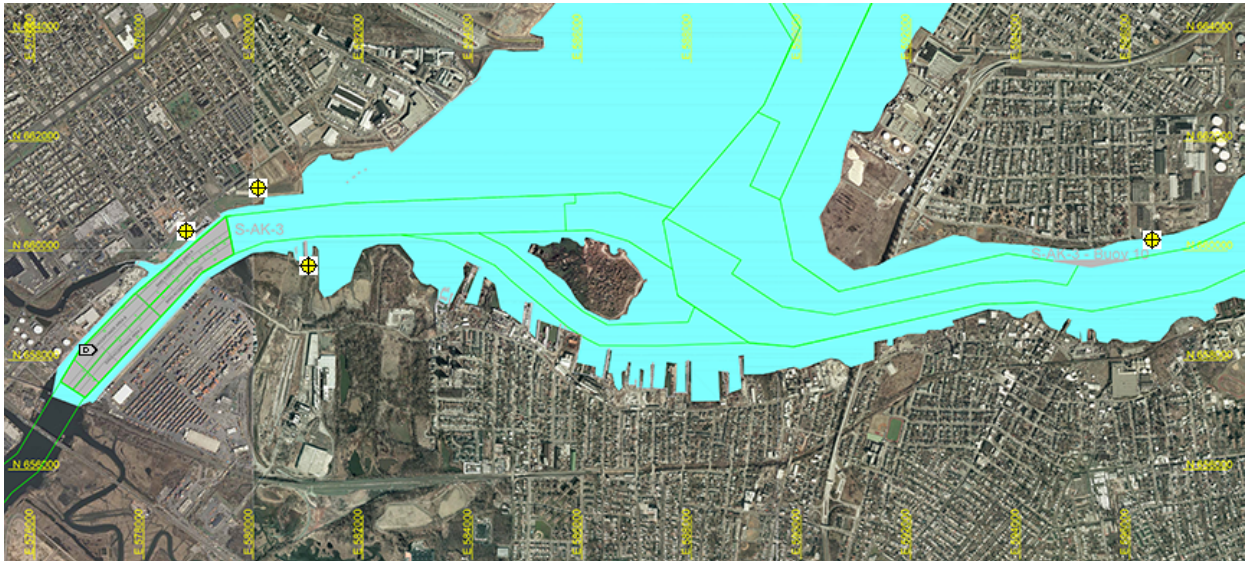
Arthur Kill Blast Vibration Summary

This site summarizes the measured ground vibrations in northwest Staten Island, from rock blasting in the Arthur Kill and other possible sources. The site is updated daily. The data are intended for the sole use of the US Army Corps of Engineers - New York District, for managing and monitoring the performance of NYNJ Harbor Deepening Project Contract in Arthur Kill starting 25 July 2011.

This page represents the most recent observations.

The Arthur Kill contract area is mapped below in light gray. The navigation grid is superimposed. Today's dredge locations are marked by colored symbols, connected by colored lines to this week's past locations marked by gray symbols. The drilling and blasting barge is marked in red. The easting and northing map coordinates in the New Jersey State Plane coordinate system are in yellow. The locations of active seismograph stations are marked by yellow station symbols. (e4sciences stations are circles. CDB stations are triangles.) Selecting a station activates its station page.

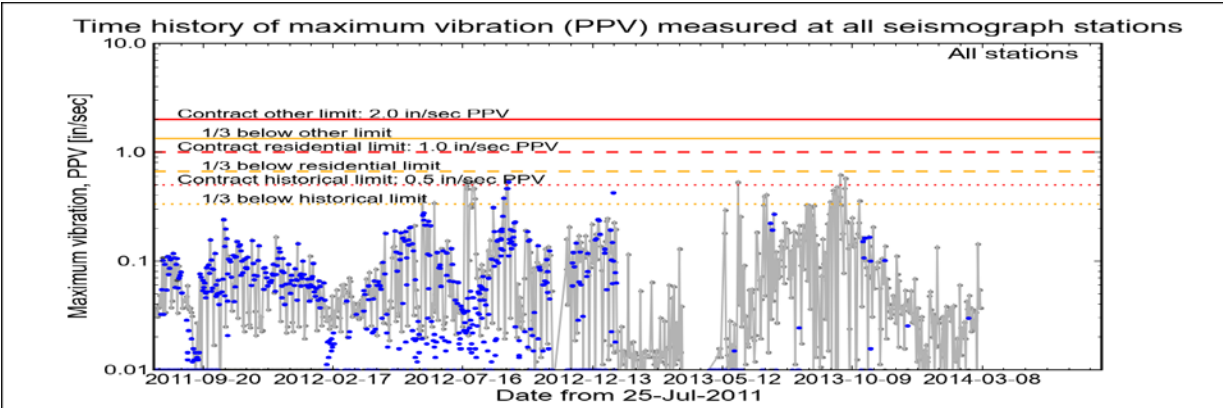
Click station for station information or click channel for event summary.



Latest Event Summary

The graph below is a plot of the maximum vibration recorded by any and all of the numerous seismograph stations during the current observation event (ambient or blast). The horizontal axis gives the date from the start of the project on 25 July 2011. The vertical axis gives the maximum vibration in peak particle velocity (PPV) in units of inches per second (in/sec). The red curves show the project's contract limits; the orange curves show one-third (1/3) below these contract limits. (The light gray curve is ambient-vibration level. The blue dots are blast-vibration levels. The dark gray dots are predicted blast-vibration levels.)

Date and time of last reading: Thu 06-Mar-2014 17:20:55



(Click on graph or [here](#) for larger view)

The table below lists the date, time, level, and station of the maximum-vibration recording for each and every event. Selecting an event activates its event page.

Blast ID	Date	Time	Max PPV (in / second)	Max PPV Station
<a href="#">Ambient</a>	<a href="#">Thu 06-Mar-2014</a>	17:20:55	0.0369	<a href="#">Elizabeth Marina</a>
<a href="#">Ambient</a>	<a href="#">Wed 05-Mar-2014</a>	13:16:02	0.0544	<a href="#">Elizabeth Marina</a>
<a href="#">Ambient</a>	<a href="#">Tue 04-Mar-2014</a>	18:15:39	0.0375	<a href="#">NYCT</a>
<a href="#">Ambient</a>	<a href="#">Mon 03-Mar-2014</a>	19:19:25	0.1430	<a href="#">Elizabeth Marina</a>
<a href="#">Ambient</a>	<a href="#">Sun 02-Mar-2014</a>	18:23:38	0.0075	<a href="#">NYCT</a>
<a href="#">Ambient</a>	<a href="#">Sat 01-Mar-2014</a>	14:02:36	0.0337	<a href="#">Elizabeth Marina</a>





Arthur Kill Blasting Event Summary

This page summarizes measurements of ground vibrations for the selected event. This page displays the maximum vibration recorded at each and every seismograph station during this event.

The Arthur Kill contract area is mapped below with a top-of-rock map. Today's dredge locations are marked by colored symbols, connected by colored lines to this week's past locations marked by gray symbols. The drilling and blasting barge location is marked in red. The easting and northing map coordinates in the New Jersey State Plane coordinate system are in yellow. The locations of active seismograph stations are marked by yellow station symbols. (*e4sciences stations are circles. CDB stations are triangles.*) Selecting a station activates its station page.

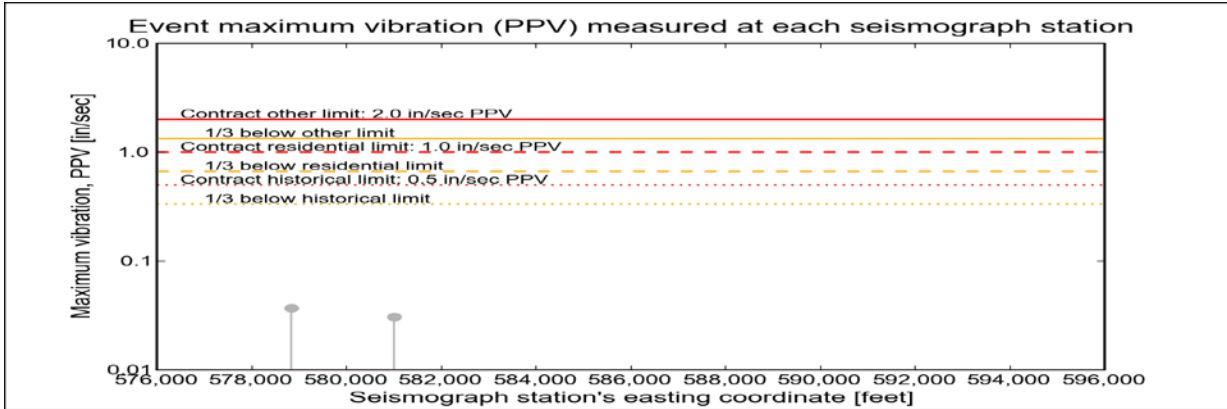
Click station for more information about the station.



Selected Event Summary

The graph below plots the maximum vibration during the selected event period (blast or ambient) recorded at each and every seismograph station along the easting positions. The vertical axis gives the maximum vibration in peak particle velocity (PPV) in units of inches per second (in/sec). If the maximum vibration level at a station is below 0.01 in/sec, the marker is a v-shaped triangle at 0.01 in/sec. (*Light-gray stems indicate ambient-vibration level. Black stems indicate blast-vibration level. Dark-gray stems indicate predicted blast-vibration level.*)

Date of reading: Thu 06-Mar-2014



(Click on graph or [here](#) for larger view)

The table below lists the date, time, and level of the maximum-vibration recording at each station for the selected event.

Station	Date	Time	Max PPV (in / second)	Vibration Type
<a href="#">Elizabeth Marina - e4s010</a>	<a href="#">Thu 06-Mar-2014</a>	17:20:55	0.0369	<a href="#">Ambient</a>
<a href="#">NYCT - e4s008</a>	<a href="#">Thu 06-Mar-2014</a>	15:41:47	0.0306	<a href="#">Ambient</a>







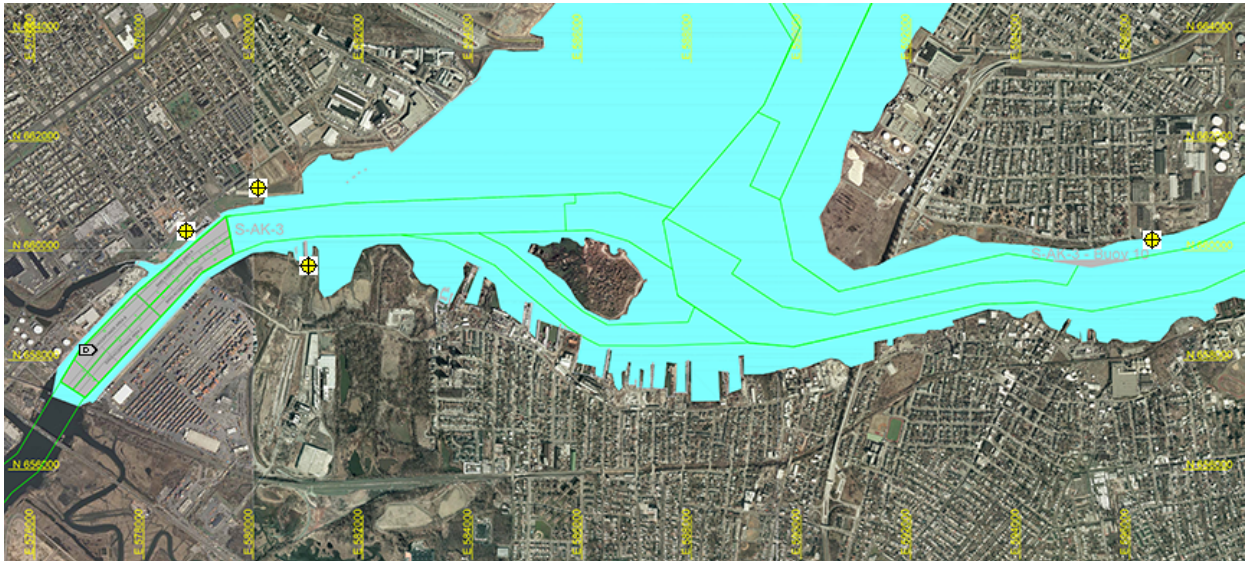
Arthur Kill Blast Vibration Summary

This site summarizes the measured ground vibrations in northwest Staten Island, from rock blasting in the Arthur Kill and other possible sources. The site is updated daily. The data are intended for the sole use of the US Army Corps of Engineers - New York District, for managing and monitoring the performance of NYNJ Harbor Deepening Project Contract in Arthur Kill starting 25 July 2011.

This page represents the most recent observations.

The Arthur Kill contract area is mapped below in light gray. The navigation grid is superimposed. Today's dredge locations are marked by colored symbols, connected by colored lines to this week's past locations marked by gray symbols. The drilling and blasting barge is marked in red. The easting and northing map coordinates in the New Jersey State Plane coordinate system are in yellow. The locations of active seismograph stations are marked by yellow station symbols. (e4sciences stations are circles. CDB stations are triangles.) Selecting a station activates its station page.

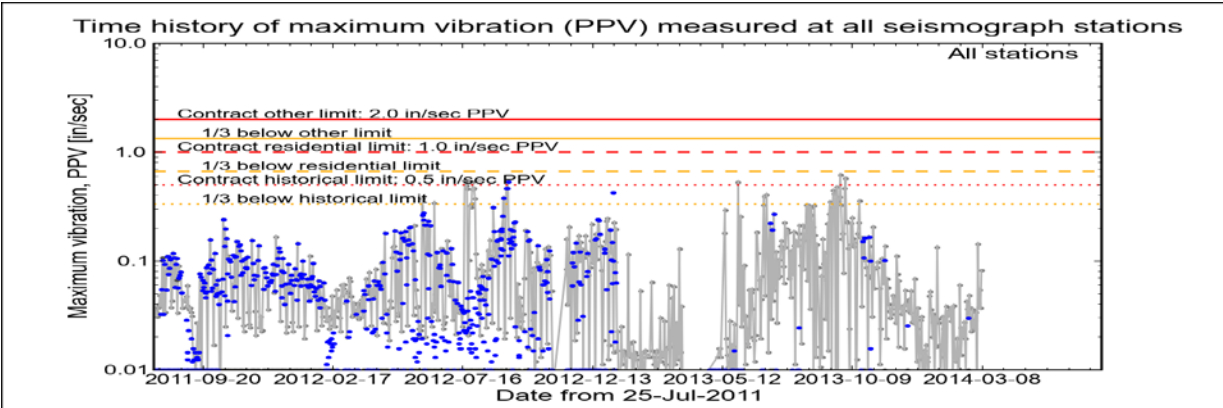
Click station for station information or click channel for event summary.



Latest Event Summary

The graph below is a plot of the maximum vibration recorded by any and all of the numerous seismograph stations during the current observation event (ambient or blast). The horizontal axis gives the date from the start of the project on 25 July 2011. The vertical axis gives the maximum vibration in peak particle velocity (PPV) in units of inches per second (in/sec). The red curves show the project's contract limits; the orange curves show one-third (1/3) below these contract limits. (The light gray curve is ambient-vibration level. The blue dots are blast-vibration levels. The dark gray dots are predicted blast-vibration levels.)

Date and time of last reading: Fri 07-Mar-2014 14:30:04



(Click on graph or [here](#) for larger view)

The table below lists the date, time, level, and station of the maximum-vibration recording for each and every event. Selecting an event activates its event page.

Blast ID	Date	Time	Max PPV (in / second)	Max PPV Station
<a href="#">Ambient</a>	<a href="#">Fri 07-Mar-2014</a>	14:30:04	0.0819	<a href="#">Elizabeth Marina</a>
<a href="#">Ambient</a>	<a href="#">Thu 06-Mar-2014</a>	17:20:55	0.0369	<a href="#">Elizabeth Marina</a>
<a href="#">Ambient</a>	<a href="#">Wed 05-Mar-2014</a>	13:16:02	0.0544	<a href="#">Elizabeth Marina</a>
<a href="#">Ambient</a>	<a href="#">Tue 04-Mar-2014</a>	18:15:39	0.0375	<a href="#">NYCT</a>
<a href="#">Ambient</a>	<a href="#">Mon 03-Mar-2014</a>	19:19:25	0.1430	<a href="#">Elizabeth Marina</a>
<a href="#">Ambient</a>	<a href="#">Sun 02-Mar-2014</a>	18:23:38	0.0075	<a href="#">NYCT</a>





Arthur Kill Blasting Event Summary

This page summarizes measurements of ground vibrations for the selected event. This page displays the maximum vibration recorded at each and every seismograph station during this event.

The Arthur Kill contract area is mapped below with a top-of-rock map. Today's dredge locations are marked by colored symbols, connected by colored lines to this week's past locations marked by gray symbols. The drilling and blasting barge location is marked in red. The easting and northing map coordinates in the New Jersey State Plane coordinate system are in yellow. The locations of active seismograph stations are marked by yellow symbols. (*e4sciences stations are circles. CDB stations are triangles.*) Selecting a station activates its station page.

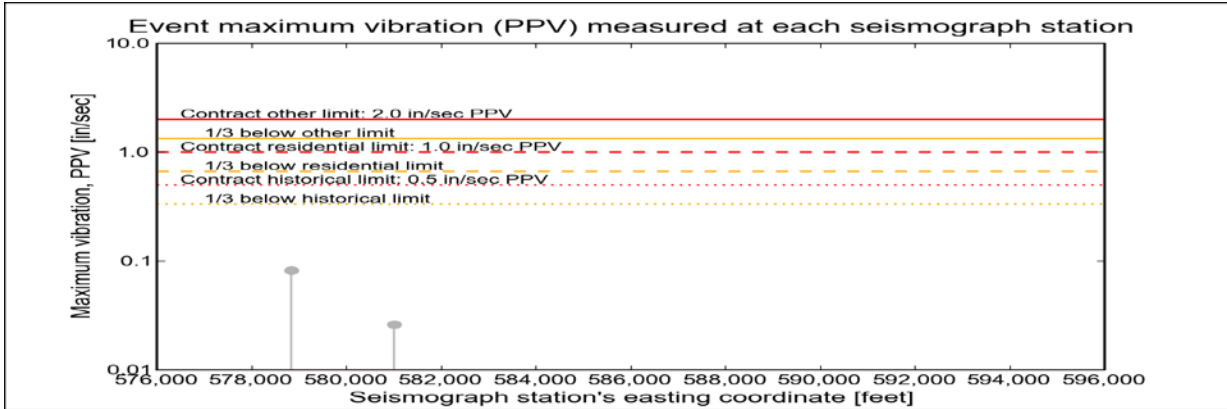
Click station for more information about the station.



Selected Event Summary

The graph below plots the maximum vibration during the selected event period (blast or ambient) recorded at each and every seismograph station along the easting positions. The vertical axis gives the maximum vibration in peak particle velocity (PPV) in units of inches per second (in/sec). If the maximum vibration level at a station is below 0.01 in/sec, the marker is a v-shaped triangle at 0.01 in/sec. (*Light-gray stems indicate ambient-vibration level. Black stems indicate blast-vibration level. Dark-gray stems indicate predicted blast-vibration level.*)

Date of reading: Fri 07-Mar-2014



(Click on graph or [here](#) for larger view)

The table below lists the date, time, and level of the maximum-vibration recording at each station for the selected event.

Station	Date	Time	Max PPV (in / second)	Vibration Type
Elizabeth Marina - e4s010	Fri 07-Mar-2014	14:30:04	0.0819	Ambient
NYCT - e4s008	Fri 07-Mar-2014	12:31:42	0.0262	Ambient







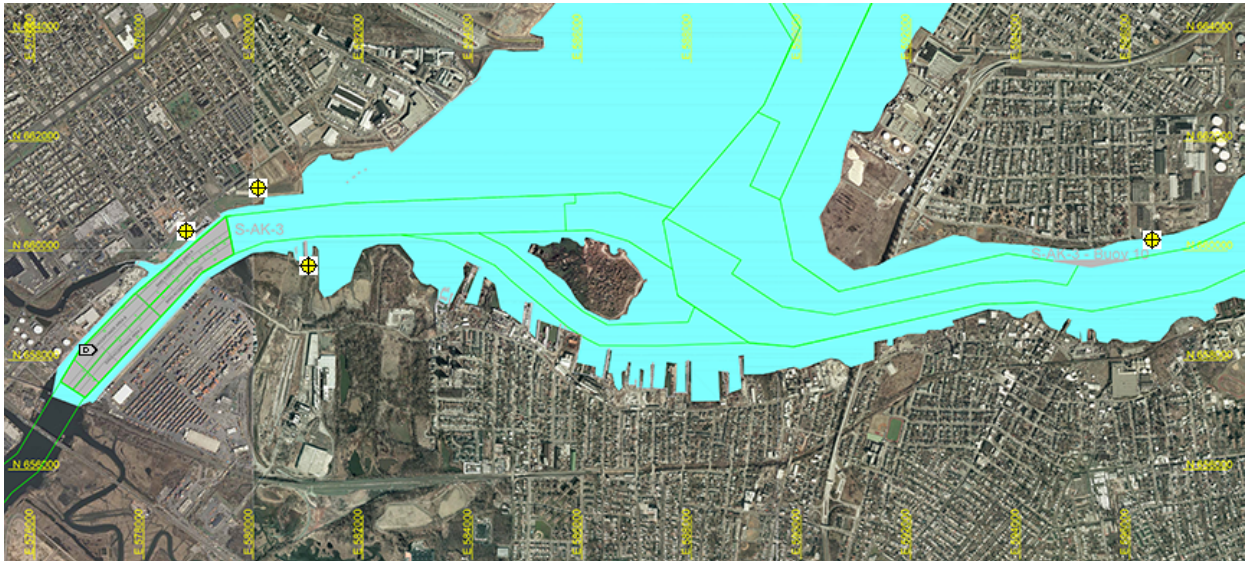
Arthur Kill Blast Vibration Summary

This site summarizes the measured ground vibrations in northwest Staten Island, from rock blasting in the Arthur Kill and other possible sources. The site is updated daily. The data are intended for the sole use of the US Army Corps of Engineers - New York District, for managing and monitoring the performance of NYNJ Harbor Deepening Project Contract in Arthur Kill starting 25 July 2011.

This page represents the most recent observations.

The Arthur Kill contract area is mapped below in light gray. The navigation grid is superimposed. Today's dredge locations are marked by colored symbols, connected by colored lines to this week's past locations marked by gray symbols. The drilling and blasting barge is marked in red. The easting and northing map coordinates in the New Jersey State Plane coordinate system are in yellow. The locations of active seismograph stations are marked by yellow station symbols. (e4sciences stations are circles. CDB stations are triangles.) Selecting a station activates its station page.

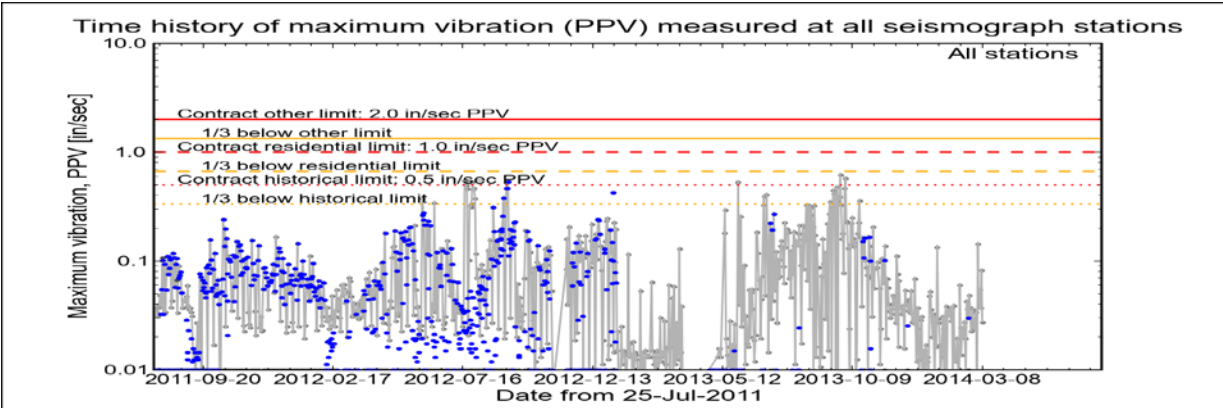
Click station for station information or click channel for event summary.



Latest Event Summary

The graph below is a plot of the maximum vibration recorded by any and all of the numerous seismograph stations during the current observation event (ambient or blast). The horizontal axis gives the date from the start of the project on 25 July 2011. The vertical axis gives the maximum vibration in peak particle velocity (PPV) in units of inches per second (in/sec). The red curves show the project's contract limits; the orange curves show one-third (1/3) below these contract limits. (The light gray curve is ambient-vibration level. The blue dots are blast-vibration levels. The dark gray dots are predicted blast-vibration levels.)

Date and time of last reading: Sat 08-Mar-2014 14:17:35



(Click on graph or [here](#) for larger view)

The table below lists the date, time, level, and station of the maximum-vibration recording for each and every event. Selecting an event activates its event page.

Blast ID	Date	Time	Max PPV (in / second)	Max PPV Station
<a href="#">Ambient</a>	<a href="#">Sat 08-Mar-2014</a>	14:17:35	0.0275	<a href="#">Elizabeth Marina</a>
<a href="#">Ambient</a>	<a href="#">Fri 07-Mar-2014</a>	14:30:04	0.0819	<a href="#">Elizabeth Marina</a>
<a href="#">Ambient</a>	<a href="#">Thu 06-Mar-2014</a>	17:20:55	0.0369	<a href="#">Elizabeth Marina</a>
<a href="#">Ambient</a>	<a href="#">Wed 05-Mar-2014</a>	13:16:02	0.0544	<a href="#">Elizabeth Marina</a>
<a href="#">Ambient</a>	<a href="#">Tue 04-Mar-2014</a>	18:15:39	0.0375	<a href="#">NYCT</a>
<a href="#">Ambient</a>	<a href="#">Mon 03-Mar-2014</a>	19:19:25	0.1430	<a href="#">Elizabeth Marina</a>





Arthur Kill Blasting Event Summary

This page summarizes measurements of ground vibrations for the selected event. This page displays the maximum vibration recorded at each and every seismograph station during this event.

The Arthur Kill contract area is mapped below with a top-of-rock map. Today's dredge locations are marked by colored symbols, connected by colored lines to this week's past locations marked by gray symbols. The drilling and blasting barge location is marked in red. The easting and northing map coordinates in the New Jersey State Plane coordinate system are in yellow. The locations of active seismograph stations are marked by yellow station symbols. (*e4sciences stations are circles. CDB stations are triangles.*) Selecting a station activates its station page.

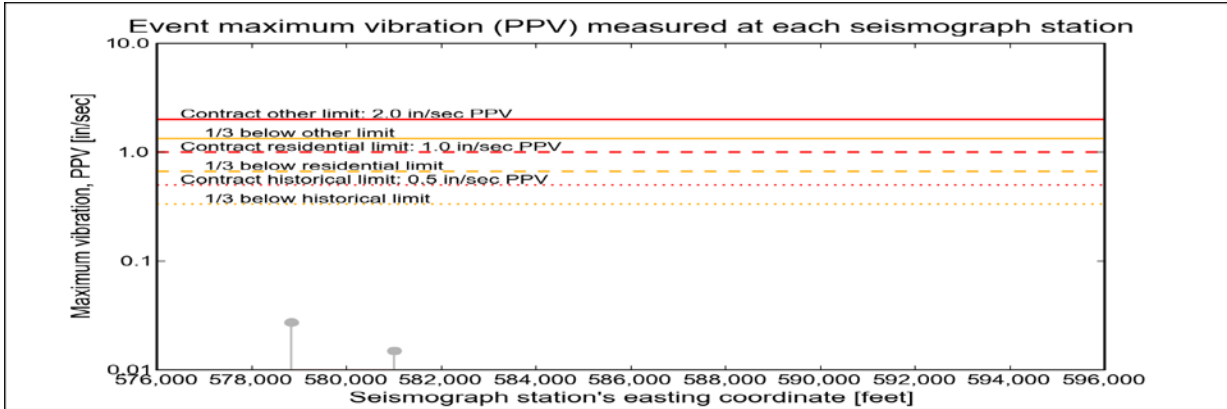
Click station for more information about the station.



Selected Event Summary

The graph below plots the maximum vibration during the selected event period (blast or ambient) recorded at each and every seismograph station along the easting positions. The vertical axis gives the maximum vibration in peak particle velocity (PPV) in units of inches per second (in/sec). If the maximum vibration level at a station is below 0.01 in/sec, the marker is a v-shaped triangle at 0.01 in/sec. (*Light-gray stems indicate ambient-vibration level. Black stems indicate blast-vibration level. Dark-gray stems indicate predicted blast-vibration level.*)

Date of reading: Sat 08-Mar-2014



(Click on graph or [here](#) for larger view)

The table below lists the date, time, and level of the maximum-vibration recording at each station for the selected event.

Station	Date	Time	Max PPV (in / second)	Vibration Type
Elizabeth Marina - e4s010	Sat 08-Mar-2014	14:17:35	0.0275	Ambient
NYCT - e4s008	Sat 08-Mar-2014	14:37:45	0.015	Ambient







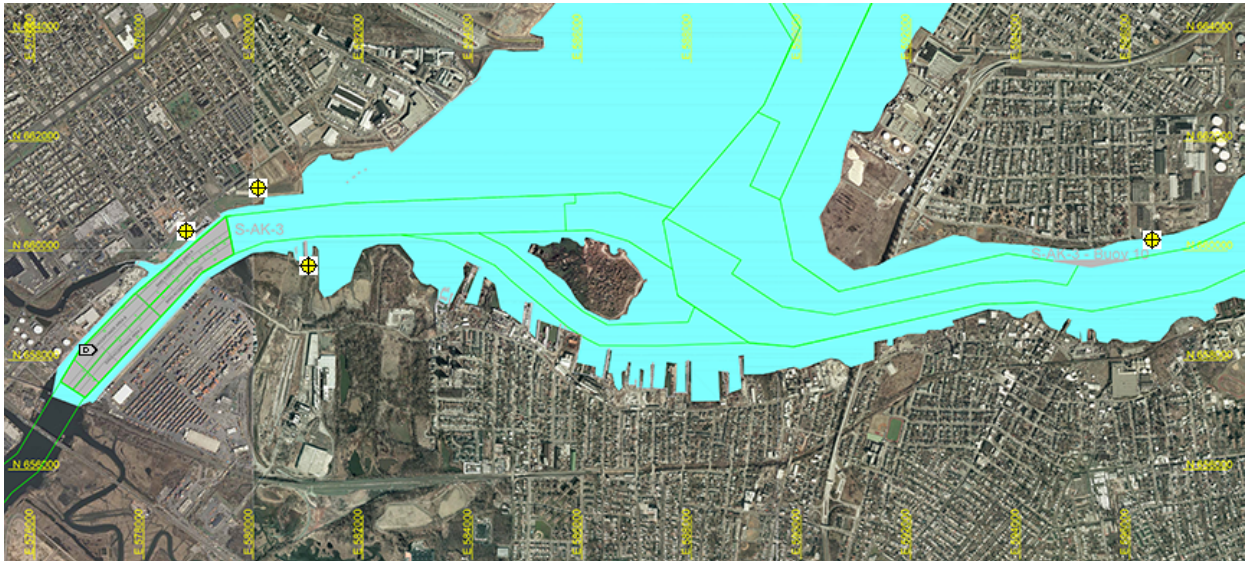
Arthur Kill Blast Vibration Summary

This site summarizes the measured ground vibrations in northwest Staten Island, from rock blasting in the Arthur Kill and other possible sources. The site is updated daily. The data are intended for the sole use of the US Army Corps of Engineers - New York District, for managing and monitoring the performance of NYNJ Harbor Deepening Project Contract in Arthur Kill starting 25 July 2011.

This page represents the most recent observations.

The Arthur Kill contract area is mapped below in light gray. The navigation grid is superimposed. Today's dredge locations are marked by colored symbols, connected by colored lines to this week's past locations marked by gray symbols. The drilling and blasting barge is marked in red. The easting and northing map coordinates in the New Jersey State Plane coordinate system are in yellow. The locations of active seismograph stations are marked by yellow station symbols. (e4sciences stations are circles. CDB stations are triangles.) Selecting a station activates its station page.

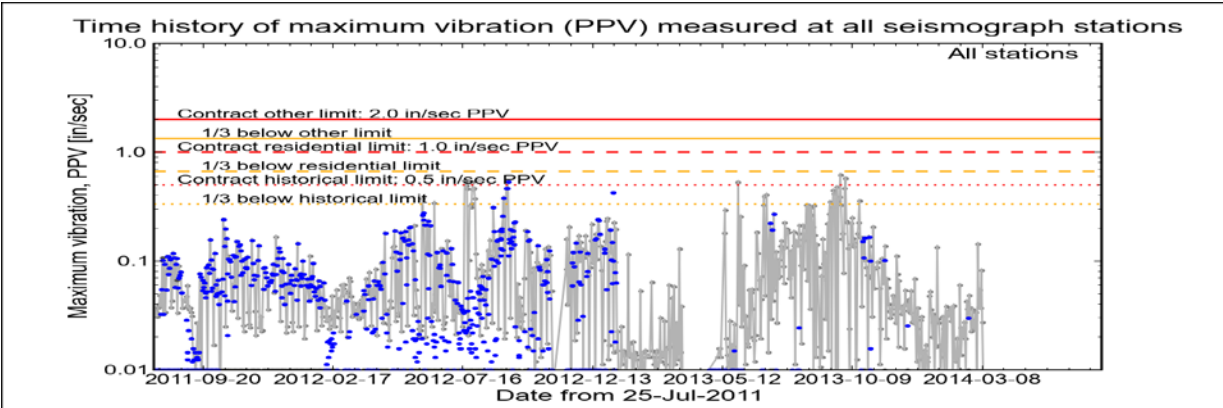
Click station for station information or click channel for event summary.



Latest Event Summary

The graph below is a plot of the maximum vibration recorded by any and all of the numerous seismograph stations during the current observation event (ambient or blast). The horizontal axis gives the date from the start of the project on 25 July 2011. The vertical axis gives the maximum vibration in peak particle velocity (PPV) in units of inches per second (in/sec). The red curves show the project's contract limits; the orange curves show one-third (1/3) below these contract limits. (The light gray curve is ambient-vibration level. The blue dots are blast-vibration levels. The dark gray dots are predicted blast-vibration levels.)

Date and time of last reading: Sun 09-Mar-2014 19:32:35



(Click on graph or [here](#) for larger view)

The table below lists the date, time, level, and station of the maximum-vibration recording for each and every event. Selecting an event activates its event page.

Blast ID	Date	Time	Max PPV (in / second)	Max PPV Station
<a href="#">Ambient</a>	<a href="#">Sun 09-Mar-2014</a>	19:32:35	0.0075	<a href="#">Elizabeth Marina</a>
<a href="#">Ambient</a>	<a href="#">Sat 08-Mar-2014</a>	14:17:35	0.0275	<a href="#">Elizabeth Marina</a>
<a href="#">Ambient</a>	<a href="#">Fri 07-Mar-2014</a>	14:30:04	0.0819	<a href="#">Elizabeth Marina</a>
<a href="#">Ambient</a>	<a href="#">Thu 06-Mar-2014</a>	17:20:55	0.0369	<a href="#">Elizabeth Marina</a>
<a href="#">Ambient</a>	<a href="#">Wed 05-Mar-2014</a>	13:16:02	0.0544	<a href="#">Elizabeth Marina</a>
<a href="#">Ambient</a>	<a href="#">Tue 04-Mar-2014</a>	18:15:39	0.0375	<a href="#">NYCT</a>





Arthur Kill Blasting Event Summary

This page summarizes measurements of ground vibrations for the selected event. This page displays the maximum vibration recorded at each and every seismograph station during this event.

The Arthur Kill contract area is mapped below with a top-of-rock map. Today's dredge locations are marked by colored symbols, connected by colored lines to this week's past locations marked by gray symbols. The drilling and blasting barge location is marked in red. The easting and northing map coordinates in the New Jersey State Plane coordinate system are in yellow. The locations of active seismograph stations are marked by yellow station symbols. (*e4sciences stations are circles. CDB stations are triangles.*) Selecting a station activates its station page.

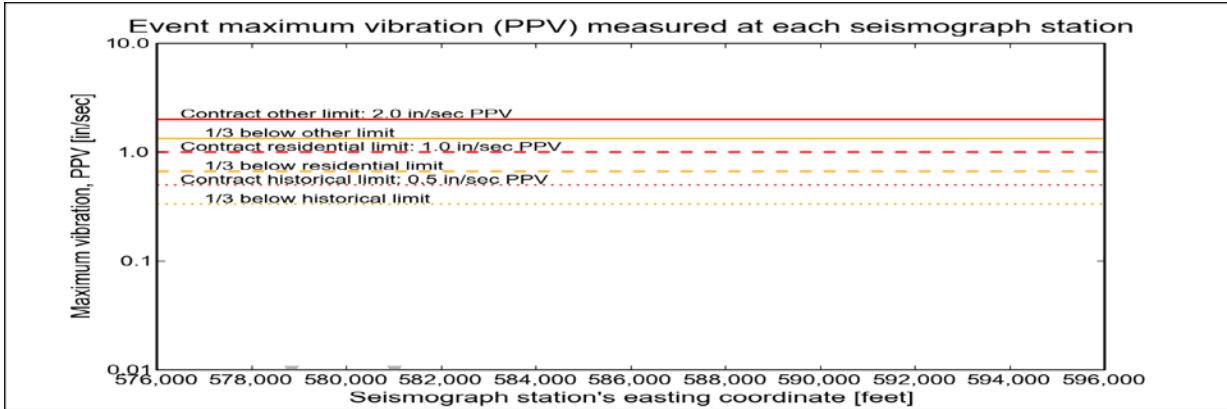
Click station for more information about the station.



Selected Event Summary

The graph below plots the maximum vibration during the selected event period (blast or ambient) recorded at each and every seismograph station along the easting positions. The vertical axis gives the maximum vibration in peak particle velocity (PPV) in units of inches per second (in/sec). If the maximum vibration level at a station is below 0.01 in/sec, the marker is a v-shaped triangle at 0.01 in/sec. (*Light-gray stems indicate ambient-vibration level. Black stems indicate blast-vibration level. Dark-gray stems indicate predicted blast-vibration level.*)

Date of reading: Sun 09-Mar-2014



(Click on graph or [here](#) for larger view)

The table below lists the date, time, and level of the maximum-vibration recording at each station for the selected event.

Station	Date	Time	Max PPV (in / second)	Vibration Type
<a href="#">Elizabeth Marina - e4s010</a>	Sun 09-Mar-2014	19:32:35	0.0075	<a href="#">Ambient</a>
<a href="#">NYCT - e4s008</a>	Sun 09-Mar-2014	07:37:43	0.00375	<a href="#">Ambient</a>

