



**US Army Corps
of Engineers®**

New York District
26 Federal Plaza
New York, N.Y. 10278
ATTN: CENAN-OP-ST

Public Notice

In replying refer to:

Public Notice No. Great South Bay FY13/14

Published: August 26, 2013 Expires: September 25, 2013

GREAT SOUTH BAY, NEW YORK FEDERAL NAVIGATION PROJECT MAINTENANCE DREDGING

TO WHOM IT MAY CONCERN:

Pursuant to Sections 313 (33 U.S.C. 1323, 86 Stat. 816) and 404 (33 U.S.C. 1344) of the Federal Water Pollution Control Act (amended in 1977 and commonly referred to as the Clean Water Act), U.S. Army Corps of Engineers, New York District proposes to perform maintenance dredging of the Great South Bay Federal Navigation Project, New York. Dredged material is expected to be used as beach nourishment at nearby beaches. Approximately 100,000 cubic yards of material is proposed for removal and disposal, subject to availability of funds.

WATERWAY: Great South Bay

LOCATION: Great South Bay, New York.

The Great South Bay – Federal Navigation Project was adopted by the Rivers and Harbors Act of 13 June 1902 and modified in 1970.

The existing project provides for a navigation channel 10 feet deep, 200 feet wide from Fire Island Inlet to the Central Basin in Great South Bay opposite Patchogue, thence 100 feet wide to Mile 18.9 in the Patchogue River with a turning basin at the upper end at a depth of 11 feet, thence 8 feet deep to the upstream limit of the project. The project is approximately 55% completed, with the work remaining to be done consisting of deepening of the Patchogue River to 10 feet and the completion of the turning basin to project dimensions. The total length of the project is approximately 19.1 miles. The boat basin for the US Coast Guard Station will be maintained to a depth of 10 feet. However, for the purposes of the current operation and maintenance effort, only select shoals in the Great South Bay main channel are expected to be dredged. See Figure 1 for additional information.

The Great South Bay was last dredged in 1992 to a depth of 10 feet plus 2 foot allowable overdepth in the main channel of Great South Bay. A total of 118,577 CY of material was removed and placed. The plan for the present maintenance operation is the same as the last dredging cycle which is to dredge to 10 feet plus 2 allowable overdepth with material removal and placement as beach nourishment along Robert Moses State Park.

This activity is being evaluated to determine if the proposed dredging with placement of dredged material on the adjacent upland which is a part of Suffolk County Parks and/or Town of Islip Parks land will not unreasonably degrade or endanger human health, welfare, economic potential, recreation and aesthetics, water quality, marine resources, ecological systems and/or flood protection.

The Corps of Engineers is soliciting comments from the public; federal, state and local agencies and officials; and other interested parties in order to consider and evaluate the impacts of this proposed activity. Comments are used to assess impacts on navigation, water quality, endangered species, historic resources, wetlands, scenic and recreational values, and other public interest factors. Comments are used in the preparation of an Environmental Assessment and/or an Environmental Impact Statement pursuant to the National Environmental Policy Act and to determine the need for a public hearing.

ALL COMMENTS REGARDING THIS ACTIVITY MUST BE PREPARED IN WRITING AND MAILED TO REACH THIS OFFICE AT THE ADDRESS ON THE FRONT PAGE BEFORE THE EXPIRATION DATE OF THIS NOTICE, otherwise, it will be presumed that there are no objections to the activity.

Any person who has an interest which may be affected by the placement of this dredged material may request a public hearing. The request must be submitted in writing to the District Engineer within the comment period of this notice and must clearly set forth the interest which may be affected and the manner in which the interest may be affected by the activity. It should be noted that information submitted by mail is considered just as carefully in the process and bears the same weight as that furnished at a public hearing.

No known archaeological, scientific, prehistorical or historical data are expected to be lost by work accomplished under the required dredging.

Reviews of the activity pursuant to Section 404 of the Clean Water Act will include application of the guidelines announced by the Administrator, U.S. Environmental Protection Agency, under authority of Section 404(b) of the Clean Water Act. The Corps will obtain a water quality certificate (WQC) from the New York State Department of Environmental Conservation in accordance with Section 401 of the Clean Water Act prior to the beginning of the proposed action.

Pursuant to Section 307 of the Coastal Zone Management Act of 1972 as amended [16 USC 1456(c)], for activities conducted or supported by a federal agency in a state which has a federally approved Coastal Zone Management (CZM) program, the Corps must submit a determination that the proposed project is consistent with the State CZM program to the maximum extent practicable. This activity is subject to review by the New York State Department of State for its consistency with the enforceable policies of the New York State Coastal Management Program. The U.S. Army Corps of Engineers New York District has determined that the proposed activities are consistent to the maximum extent practicable within the applicable policies of the New York State Coastal Management Program. A copy of this determination will be provided to the New York State Department of State, Division of Coastal Resources. Additional information regarding the Corps of Engineers' consistency determination may be obtained by contacting the New York State Department of State, Division of Coastal Resources, 41 State Street, Albany, New York 12231, Attention: Consistency Review.

In compliance with Section 305(b)(2) of the Magnuson-Stevens Fishery Conservation and Management Act (1996 amendments), an Essential Fish Habitat Assessment will be prepared and submitted to the National Marine Fisheries Service for review and comment.

The proposed work is being coordinated with the following Federal, State and local agencies:

- U.S. Environmental Protection Agency
- U.S. Department of the Interior, Fish and Wildlife Service
- U.S. Department of Commerce, National Marine Fisheries Service
- U.S. Coast Guard, Third Coast Guard District
- New York State Department of Environmental Conservation
- New York State Department of State

If you have any questions concerning this notice, you may contact this office at (917) 790-8404 and ask for Mr. Joseph Olha. Comments or questions may be FAXED to (212) 264-4260 ATTN: Mr. Joseph Olha.

DESCRIPTION OF PLANNED ACTION:

The U.S. Army Corps of Engineers, New York District (the Corps) proposes to perform maintenance dredging of select shoals in the main channel of Great South Bay Federal Navigation Project. The channel was last dredged via Corps contract in 1992 with the removal of approximately 118,577 cubic yards (CY) of sand, which was placed as beach nourishment along Robert Moses State Park. The proposed maintenance dredging would involve the removal of approximately 100,000 CY of sand, which would also be placed as beach nourishment along Robert Moses State Park. The channel will be dredged to its authorized depth of 10 feet plus 2 feet allowable overdepth.

The purpose of the proposed work is to alleviate the effects of shoaling and maintain the authorized project dimensions, thereby assuring safe and economical use of the Great South Bay by commercial and recreational boating interests.

Maintenance dredging of the Great South Bay main channel will be accomplished by hydraulic dredge or similar plant. The entire channel will generally not require maintenance dredging; only areas where shoaling has reduced the depth of the channel will require dredging.

No work will occur from January 15 to October 1 due to environmental restrictions to protect finfish flounder (January 15 to September 30) and piping plover (April 1 to August 31). Therefore, work will only be performed from October 1 to January 15.

ENVIRONMENTAL IMPACT STATEMENT:

An Environmental Impact Statement was prepared by New York District in December 1975 for maintenance dredging in of the Great South Bay, Federal Navigation Project. It has been determined that maintenance dredging of the Great South Bay, with disposal of the dredged material on nearby beaches and upland disposal areas has no significant adverse environmental impacts on water quality, marine resources, wildlife, recreation, aesthetics, and flood protection.

An update of the EA and a 404 (b) evaluation as required by the Clean Water Act 40 CFR 230 will be prepared prior to the implementation of the proposed work.

PLACEMENT SITE:

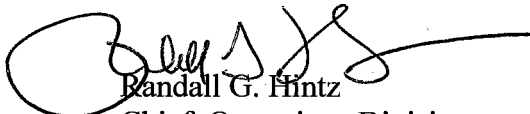
The dredged material is expected to be transported by pipeline dredge and deposited at the designated site. The dredged material from this project is proposed to be placed as beach nourishment at Robert Moses State Park, portions of the material may be stockpiled for future use at the Field 5 area. Sites are being coordinated with NYSDEC. See Figure 2 for locations.

MATERIAL DESCRIPTION:

During the last dredging cycle, results of grain size analyses performed on samples collected within the project area indicate that the material was composed of 93% sand and 7% silt and clay.

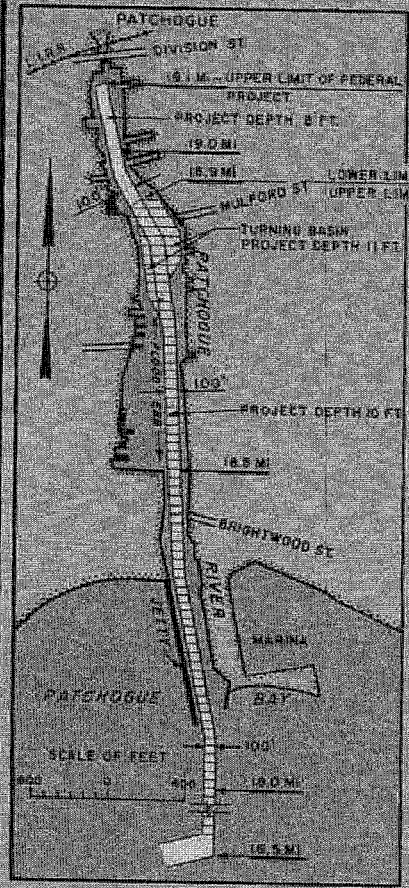
It is requested that you communicate the foregoing information concerning the proposed work to any persons known by you to be interested and who did not receive a copy of this notice.

For more information on New York District Corps of Engineers programs, please visit our web site at <http://www.nan.usace.army.mil>.

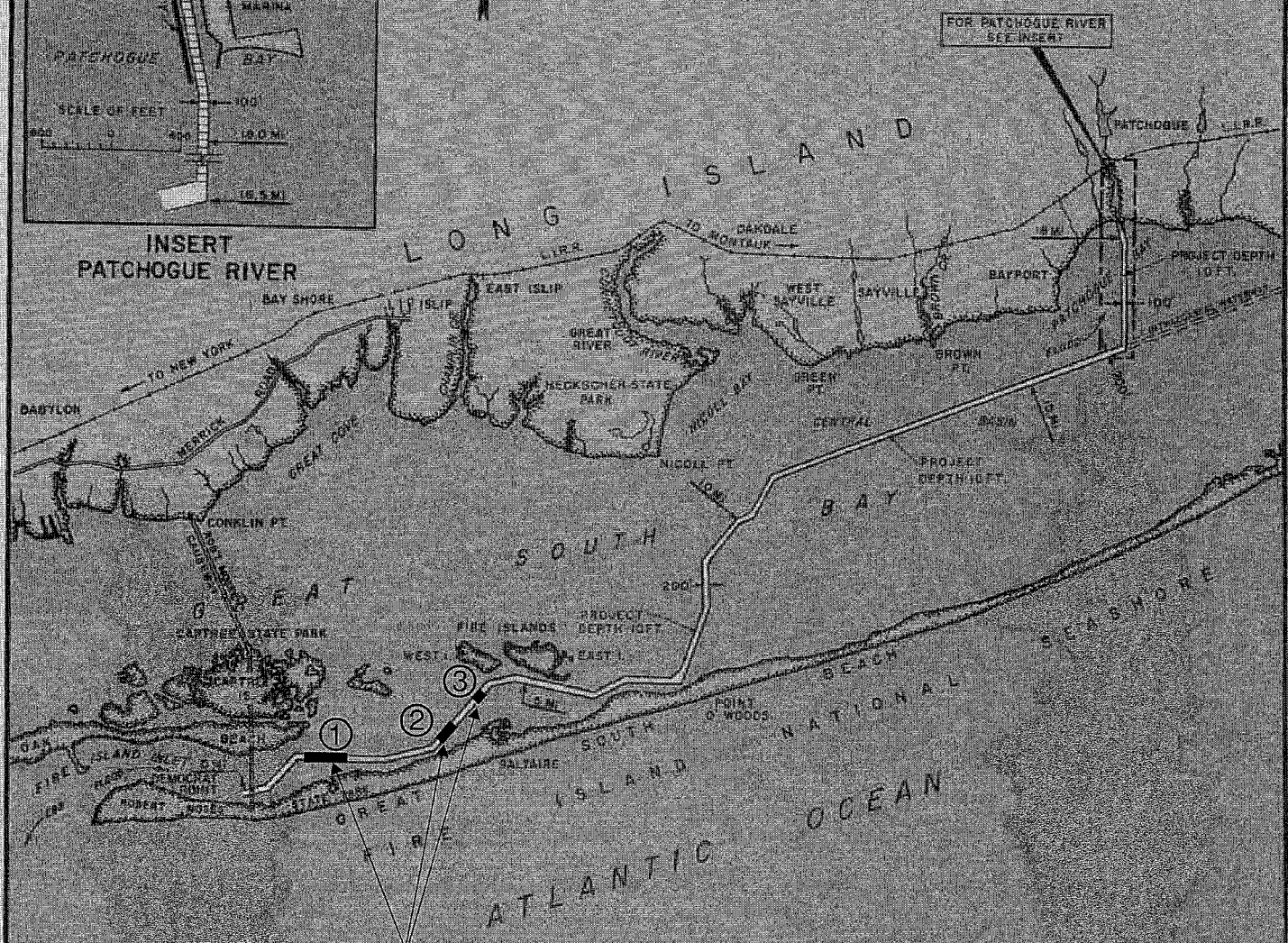

Randall G. Hintz
Chief, Operations Division

Shoal Proposed Volume

- ① 65,600 CY
- ② 32,600 CY
- ③ 3,300 CY



INSERT
PATCHOGUE RIVER



AREAS TO BE DREDGED

LEGEND

NEW WORK REMAINING TO BE DONE

DATUM PLANES

M.L.W. (FIRE ISLAND INLET) = 12 FT. BELOW M.S.L.
M.L.W. (F. INLET TO PATCHOGUE RIVER) = 12 TO 0.31 FT. BELOW M.S.L.

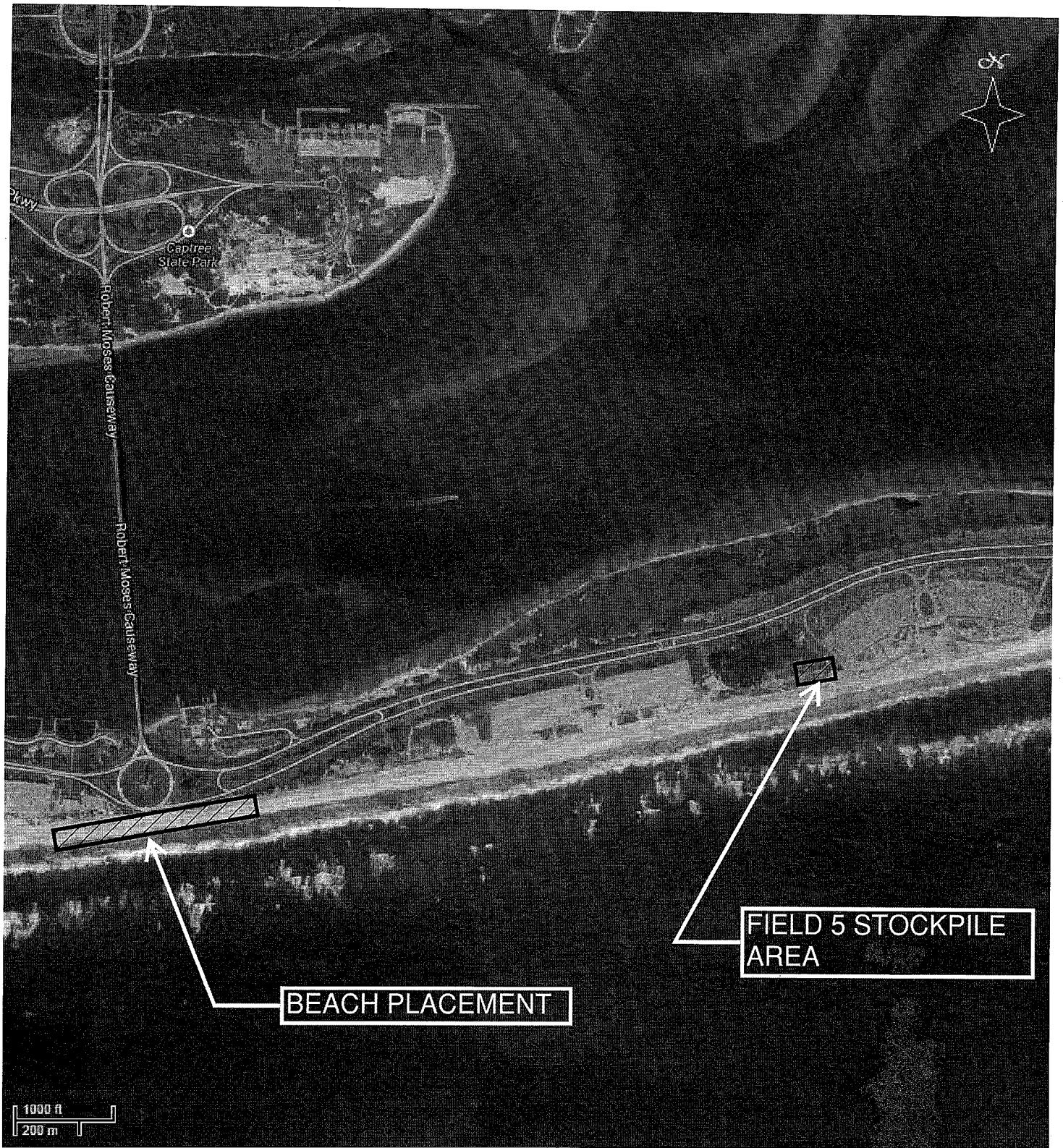
GREAT SOUTH BAY, N. Y.

30 SEPTEMBER 1986

SCALE OF FEET
5000 0 5000

DEPARTMENT OF THE ARMY
NEW YORK DISTRICT, CORPS OF ENGINEERS
NEW YORK, NEW YORK

FIGURE 1



POSSIBLE PLACEMENT LOCATIONS
FIGURE 2