



**US Army Corps
of Engineers®**

New York District
26 Federal Plaza
New York, N.Y. 10278
ATTN: CENAN-OP-ST

Public Notice

In replying refer to:
Public Notice No. MORICHES INLET 18
Published: April 18, 2018
Expires: April 27, 2018

10-DAY PUBLIC NOTICE

EMERGENCY MAINTENANCE DREDGING OF MORICHES INLET, NEW YORK FEDERAL NAVIGATION PROJECT

TO WHOM IT MAY CONCERN:

The New York District, U.S. Army Corps of Engineers, pursuant to Section 10 of the Rivers and Harbors Act of 1899 and Section 404 (33 U.S.C. 1344) of the Federal Water Pollution Control Act (amended in 1977 and commonly referred to as the Clean Water Act), proposes to perform emergency maintenance dredging of the Moriches Inlet Federal Navigation Channel and deposition basin (Figure 1) with subsequent placement of the dredged material along the shoreline west of the inlet.

The New York District, U.S. Army Corps of Engineers, has received the needed Emergency Declaration from the Corps of Engineers regional North Atlantic Division Engineer which allows for expedited coordination with U.S. Fish and Wildlife Service regarding the listed endangered bird species, Piping Plover; the National Marine Fisheries Service regarding relevant fisheries species; the United States Coast Guard – Sector Long Island Sound; the New York State Department of Environmental Conservation, and the State of New York Department of State. The expedited coordination is needed to comply with several federal and state laws as well as help identify suitable placement location for all the sand that is clogging the inlet.

ACTIVITY: Emergency maintenance dredging of the Moriches Inlet Federal Navigation Project, with placement of approximately 300,000 cubic yards of dredged material along the shoreline west of the inlet or near shore west of the inlet.

WATERWAY: Moriches Inlet

LOCATION: Moriches Inlet is located between Fire Island and Cupsogue Beach County Park in Suffolk County, New York.

The Moriches Inlet Federal Navigation Project was authorized by the Rivers and Harbors Act of 1960 and the 1985 Supplemental Appropriation Act.

The existing navigation project at Moriches Inlet provides for: an outer entrance channel 10 feet deep, 200 feet wide, extending from that depth in the Atlantic Ocean through the inlet into Moriches Bay, at a length of approximately 0.8 mile; a 300 feet wide deposition basin encompassing the outer entrance channel that is 14 feet deep plus 2 feet overdepth and is approximately 3,000 feet in length; an inner navigation channel, 6 feet deep, 100 feet wide, that runs northward from the outer entrance channel to the Long Island Intracoastal Waterway navigation channel, length approximately 1.1 miles (Figure 1).

The proposed activity is to dredge the critical shoal area located in the outer entrance channel and deposition basin (Figure 1).

A detailed description of the proposed activities is enclosed to assist in your review. This activity is being evaluated to determine if the proposed emergency dredging with placement of dredged material on the nearby beach will not unreasonably degrade or endanger human health, welfare, economic potential, recreation and aesthetics, water quality, marine resources, ecological systems and/or flood protection.

The Corps of Engineers is soliciting comments from the public; federal, state and local agencies and officials; Indian tribes; and other interested parties in order to consider and evaluate the impacts of this proposed activity. Comments are used to assess impacts on navigation, water quality, endangered species, historic resources, wetlands, scenic and recreational values, and other public interest factors. Comments are used in the preparation of an Environmental Assessment pursuant to the National Environmental Policy Act and to determine the need for a public hearing.

ALL COMMENTS REGARDING THIS ACTIVITY MUST BE PREPARED IN WRITING AND MAILED TO REACH THIS OFFICE AT THE ADDRESS ON THE FRONT PAGE BEFORE THE EXPIRATION DATE OF THIS NOTICE, otherwise, it will be presumed that there are no objections to the activity.

Any person who has an interest which may be affected by the placement of this dredged material may request a public hearing. The request must be submitted in writing to the District Engineer within the comment period of this notice and must clearly set forth the interest which may be affected and the manner in which the interest may be affected by the activity. It should be noted that information submitted by mail is considered just as carefully in the process and bears the same weight as that furnished at a public hearing.

No known archaeological, scientific, prehistorical or historical data are expected to be lost by work accomplished under the required dredging.

Reviews of the activity pursuant to Section 404 of the Clean Water Act will include application of the guidelines announced by the Administrator, U.S. Environmental Protection Agency, under authority of Section 404(b) of the Clean Water Act. The Corps will obtain a water quality certificate (WQC) from the New York State Department of Environmental Conservation in accordance with Section 401 of the Clean Water Act.

Pursuant to Section 307 of the Coastal Zone Management Act of 1972 as amended [16 USC 1456(c)], for activities conducted or supported by a federal agency in a state which

has a federally approved Coastal Zone Management (CZM) program, the Corps has submitted a determination that the proposed project is consistent with the Department of State CZM consistency policies. This activity is subject to review by the New York State Department of State for its consistency with enforceable policies of the New York State CZM program. The U.S. Army Corps of Engineers New York District has determined that the proposed activities are consistent to the maximum extent practicable within the application policies of the New York State CZM. A copy of this determination has been provided to the New York State Department of State, Office of Coastal, Local Government, and Community Sustainability. Additional information regarding the Corps of Engineers' consistency determination may be obtained by contacting New York State Department of State, Office of Coastal, Local Government, and Community Sustainability, One Commerce Plaza, 99 Washington Avenue, Suite 1010, Albany, NY 11231.

In compliance with Section 305(b)(2) of the Magnuson-Stevens Fishery Conservation and Management Act (1996 amendments), an Essential Fish Habitat Assessment will be prepared and submitted to the National Marine Fisheries Service for review and comment.

The proposed work is being coordinated with the following Federal, State and local agencies:

- U.S. Environmental Protection Agency
- U.S. Department of the Interior, Fish and Wildlife Service
- U.S. Department of Commerce, National Marine Fisheries Service
- U.S. Coast Guard, First District
- New York State Department of Environmental Conservation
- New York State Department of State

If you have any questions concerning this notice, please contact Mr. Ed Wrocenski, Project Manager, at (917) 790-8636. Comments or questions may be FAXED to (212) 264-4260 ATTN: Mr. Ed Wrocenski, or edward.wrocenski@usace.army.mil.

DESCRIPTION OF PLANNED ACTION:

The U.S. Army Corps of Engineers, New York District (the Corps) proposes to perform emergency maintenance dredging of the Federal Navigation Channel and deposition basin of Moriches Inlet. The channel was last dredged by the USACE in 2012, when the removal of approximately 200,000 cubic yards (CY) of sand was used in a beneficial manner to close a breach at Cupsogue Beach that was created by Hurricane Sandy. The proposed emergency maintenance dredging is expected to involve the removal of approximately 300,000 CY of sand, which could be used in a beneficial manner as beach nourishment placed along the shoreline west of the inlet or near shore west of the inlet. The channel and deposition basins will be dredged to a depth of 14 feet plus 2 feet allowable overdepth. The proposed emergency dredging for this cycle is anticipated to occur in the summer/fall/winter of 2018/2019, subject to the availability of funds.

The purpose of the proposed emergency work is to alleviate the affects of shoaling and maintain the authorized project dimensions, thereby providing safe and economical use of the Moriches Inlet by commercial and recreational boating interests while also

providing beneficial use of the dredged material. Between maintenance operations, the bypassed sand would be carried by littoral drift to feed down drift beaches. The maintenance operation would thus serve to place sand trapped in the channel back into the normal littoral movement that naturally replenishes the western beaches, while maintaining a safe channel for navigation.

Emergency maintenance dredging of the channel and deposition basins at Moriches Inlet will be accomplished by an ocean-going hydraulic cutter-head dredge, hopper dredge, or similar plant. The entire channel will generally not require maintenance dredging; only areas where shoaling has reduced the depth of the channel will require dredging.

ENVIRONMENTAL IMPACT STATEMENT:

An Environmental Impact Statement (EIS) was prepared by the U.S. Army Engineer District, New York in 1987. An Environmental Assessment (EA) updating this EIS was prepared by the New York District in 1998 and 2003. The EIS and EAs indicated that dredging of Moriches Inlet with placement of the dredged material as nourishment along the nearby shoreline of the designated beach would have no significant adverse environmental impact on water quality, marine resources, fish, wildlife, endangered species, recreation, aesthetics and flood protection of the area.

An update of the EA and a 404 (b) evaluation as required by the Clean Water Act 40 CFR 230 will be prepared prior to the implementation of the proposed emergency work.

PLACEMENT SITE:

The dredged material from this project is proposed to be placed along the shoreline west of the inlet or near shore west of the inlet, in Suffolk County, New York (Figure 2). The dredged material will be transported by hopper dredge and/or pipeline and deposited at the designated site.

MATERIAL DESCRIPTION:

Results of previous grain size analyses performed on samples collected within the project area have indicated that the material to be deposited is predominantly sand (greater than 90% sand). Therefore, this proposed dredged material would be suitable for beach or near shore placement.

It is requested that you communicate the foregoing information concerning the proposed work to any persons known by you to be interested and who did not receive a copy of this notice.

For more information on New York District Corps of Engineers programs, please visit our web site at <http://www.nan.usace.army.mil>.

A handwritten signature in black ink, appearing to read 'T. Asbery', is written over a large, stylized circular mark.

Thomas D. Asbery
Colonel, U.S. Army
District Engineer

Moriches Inlet Federal Navigation Project

Potential Placement Locations for Dredged Sand

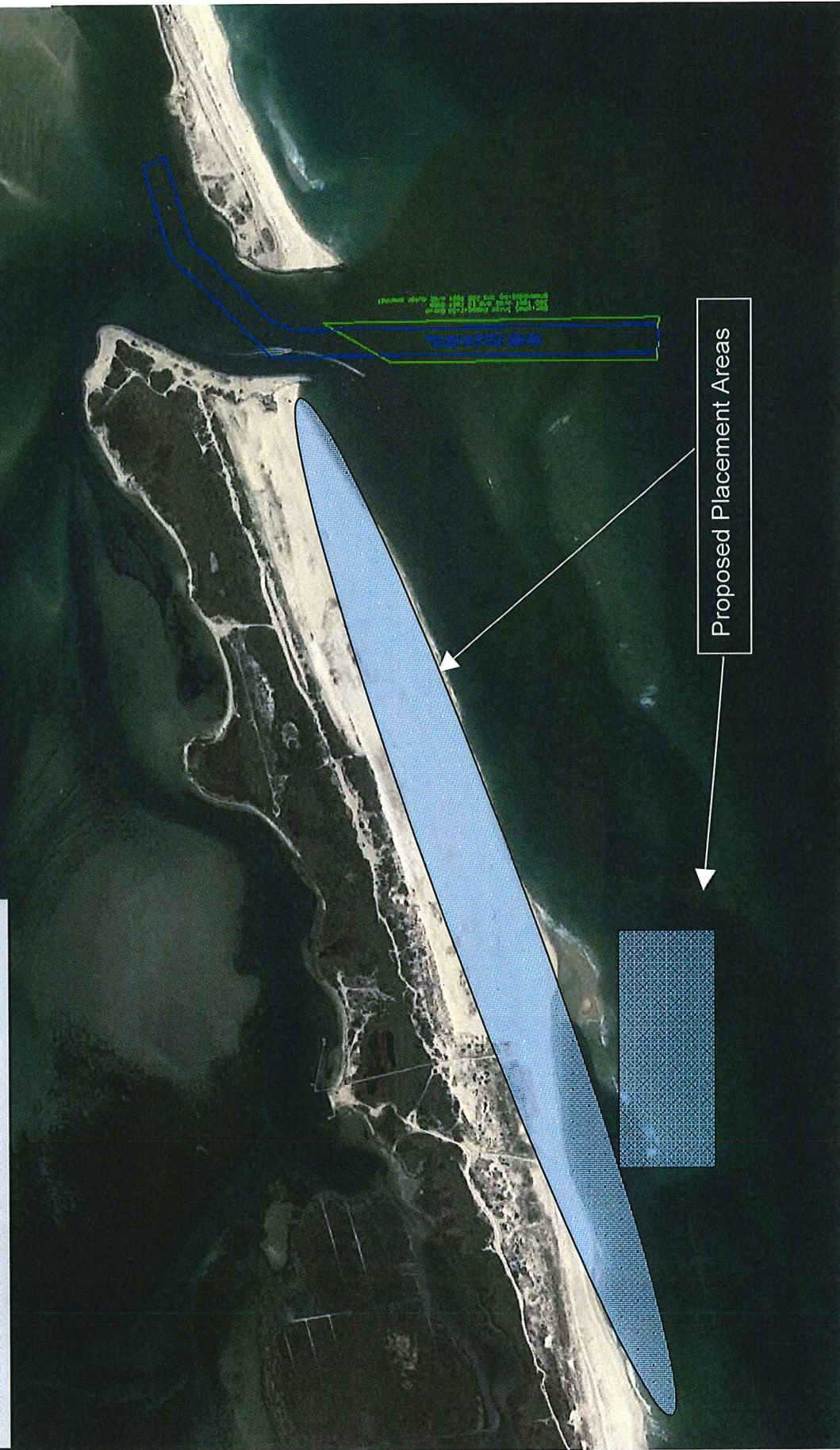


Figure 2: Moriches Inlet, potential placement locations along the shoreline west of the inlet or near-shore west of the inlet.

Moriches Inlet Federal Navigation Project

Approximate Area to be Dredged



Figure 1: Moriches Inlet, approximate location of dredging area (Google Earth Image Date October 2017)